

Overview of Refugee and Asylum-Seekers Population

(as of 31 June 2023)

1.38 MILLION approx

TOTAL REGISTERED PERSONS OF CONCERN



68.8%
OUTSIDE REFUGEE VILLAGES

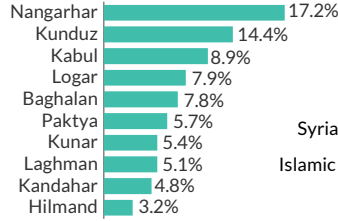


31.2%
LIVING IN REFUGEE VILLAGES

1.32 MILLION approx

AFGHAN (PoR) CARD HOLDERS

% PLACE OF ORIGIN (TOP 10)

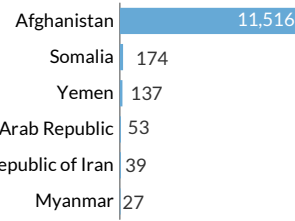


19.6% From other regions

12,038

REGISTERED REFUGEES UNDER UNHCR'S MANDATE

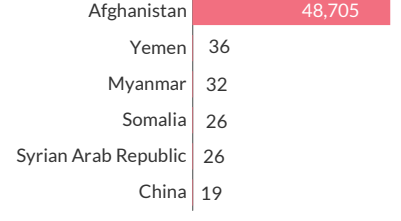
COUNTRY OF ORIGIN (TOP 6)



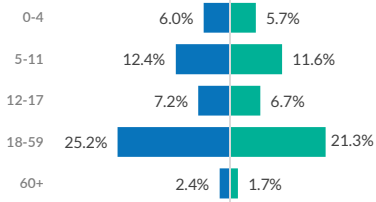
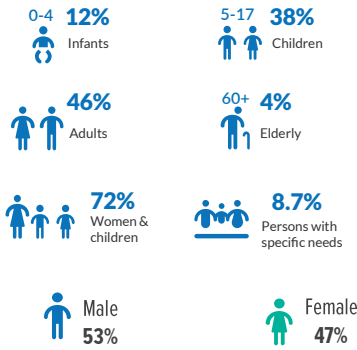
48,902

REGISTERED ASYLUM SEEKERS UNDER UNHCR'S MANDATE

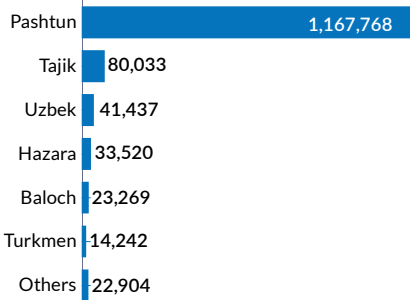
COUNTRY OF ORIGIN (TOP 6)



AGE AND GENDER COMPOSITION

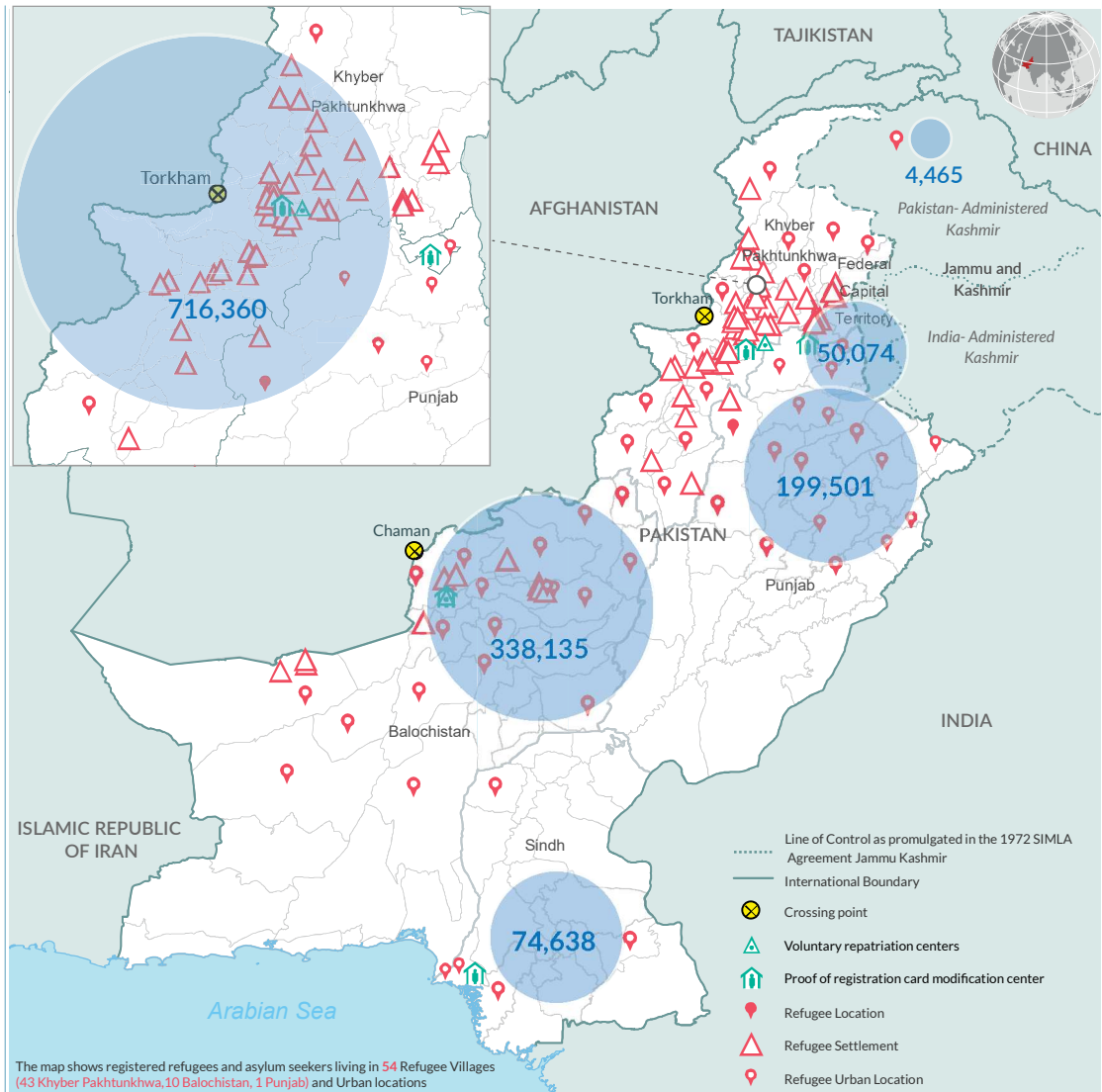


BREAKDOWN BY ETHNICITY

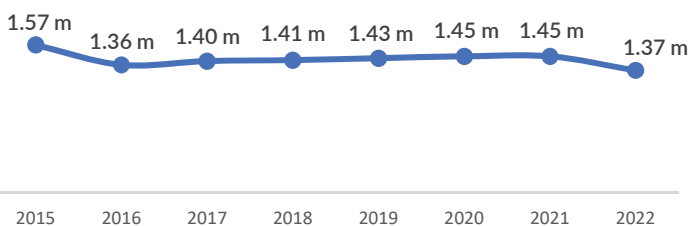


346,253 Households

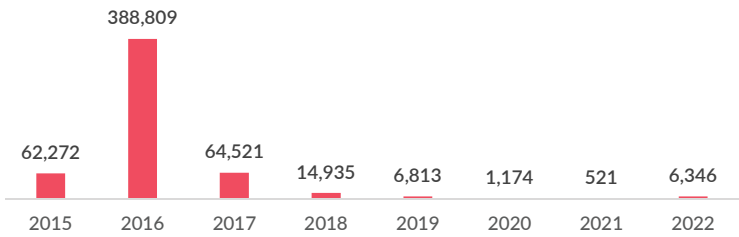
78,014 (22.5%) Female-Headed



TRENDS POPULATION TREND SINCE 2015



POPULATION DECREASE TREND SINCE 2015*



The Population Statistics are compiled quarterly using data from Afghan National Registration (ANR) Database and UNHCR Profile Global Registration System (Progres V4). Statistics are updated as of 30 June 2023.

* Decreases result from voluntary repatriation, resettlement and inactivation, including due to deaths

Disclaimer: The boundaries and names shown and the designations used on the map do not imply official endorsement or acceptance by the United Nations. Dotted line represents approximately the Line of Control in Jammu and Kashmir agreed upon by India and Pakistan. The final status of Jammu and Kashmir has not yet been agreed upon by the parties. Creation date: 10 July 2023 Data Sources: Afghan National Registration (ANR) Database, UNHCR. More information available on UNHCR: data portal, <https://data2.unhcr.org/en/country/pak>, Feedback: Information Management Unit at pakistan@unhcr.org