

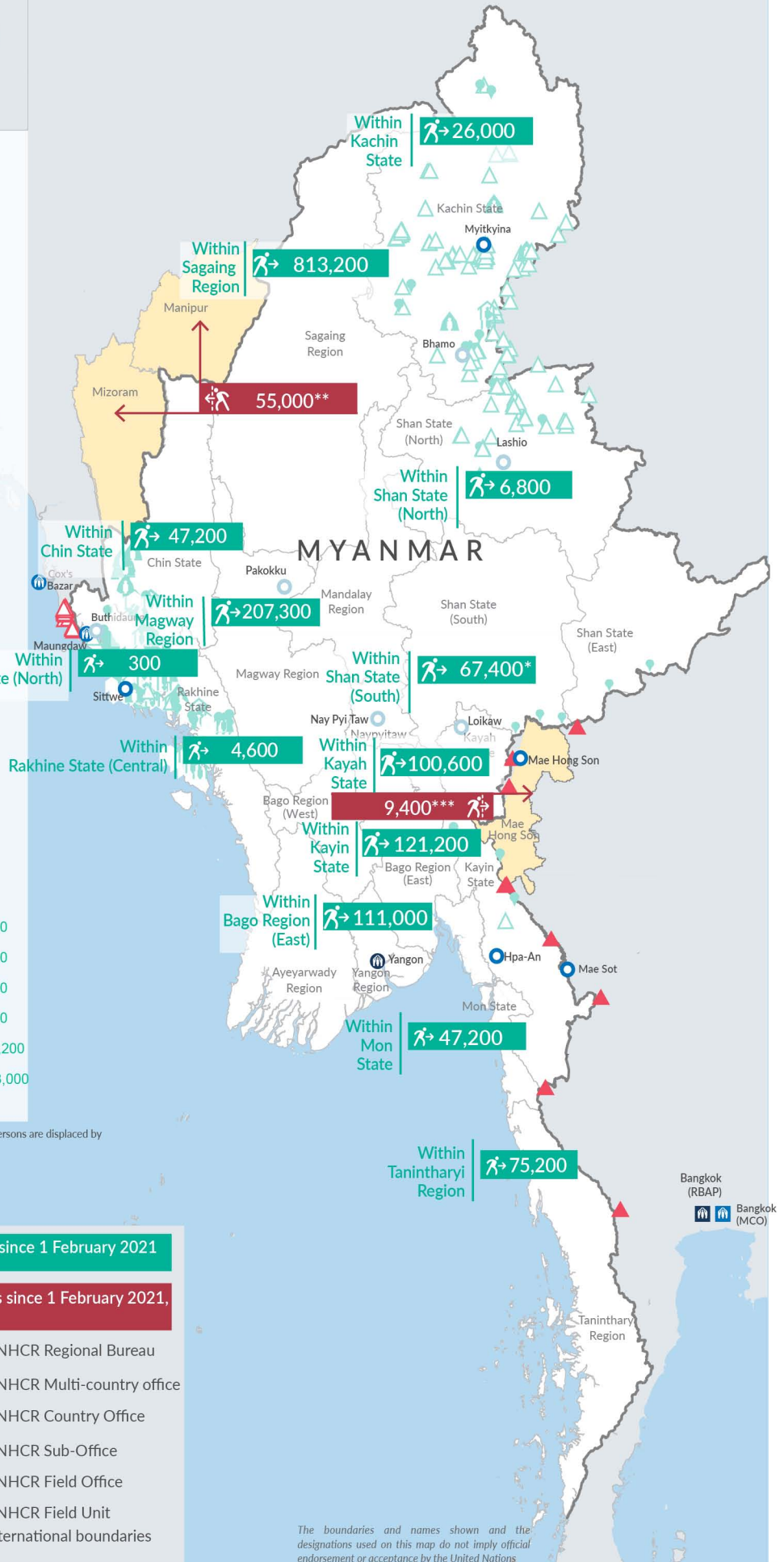
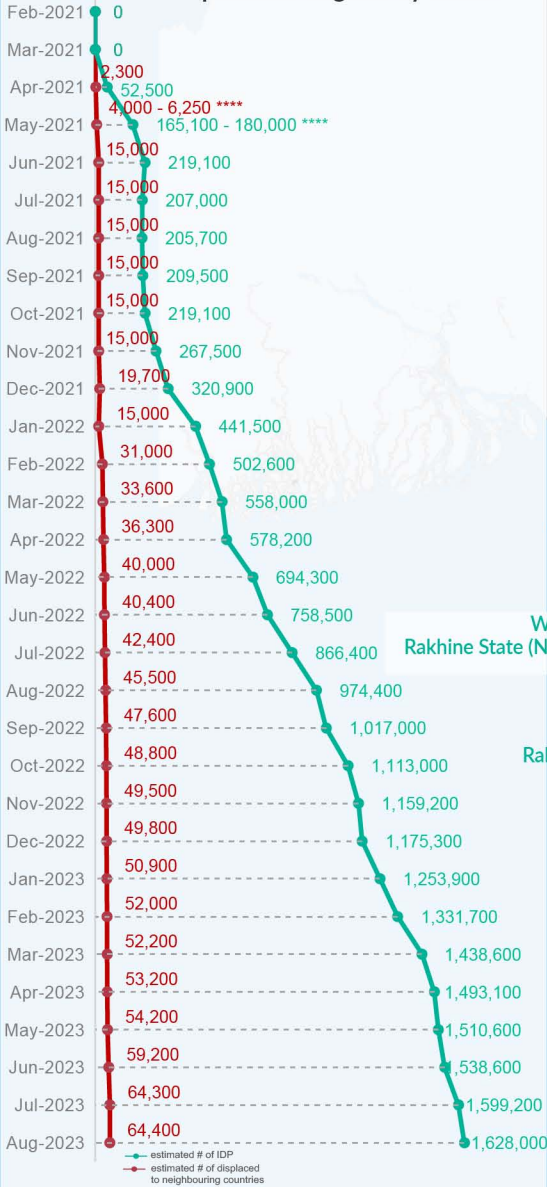
Key figures

Estimated # of IDPs → 1,628,000

Estimated # of displaced to neighbouring countries → 64,400

Source : UN in Myanmar

Estimated displacement figures by Month



*60,400 persons are displaced by armed conflict in neighbouring Kayah State while 7,000 persons are displaced by inter-EAO conflict between SSPP and RCSS.

**UN Estimates

***Estimates by Tak Border Command Center (TBCC)

****Range of figures was used while data collection was in progress.

Estimated internal displacement within Myanmar since 1 February 2021 (rounded to the nearest hundred)

Estimated displacement to neighbouring countries since 1 February 2021, who remain displaced (rounded to the nearest hundred)

- IDP unplanned settlement (pre-1 Feb 2021)
- IDP Center (pre-1 Feb 2021)
- IDP spontaneous location (pre-1 Feb 2021)
- IDP planned settlement (pre-1 Feb 2021)
- Temporary shelter for displaced people from Myanmar
- Refugee, planned settlement
- States/Provinces with new arrivals
- UNHCR Regional Bureau
- UNHCR Multi-country office
- UNHCR Country Office
- UNHCR Sub-Office
- UNHCR Field Office
- UNHCR Field Unit
- International boundaries

The boundaries and names shown and the designations used on this map do not imply official endorsement or acceptance by the United Nations

Key figures


1,934,200

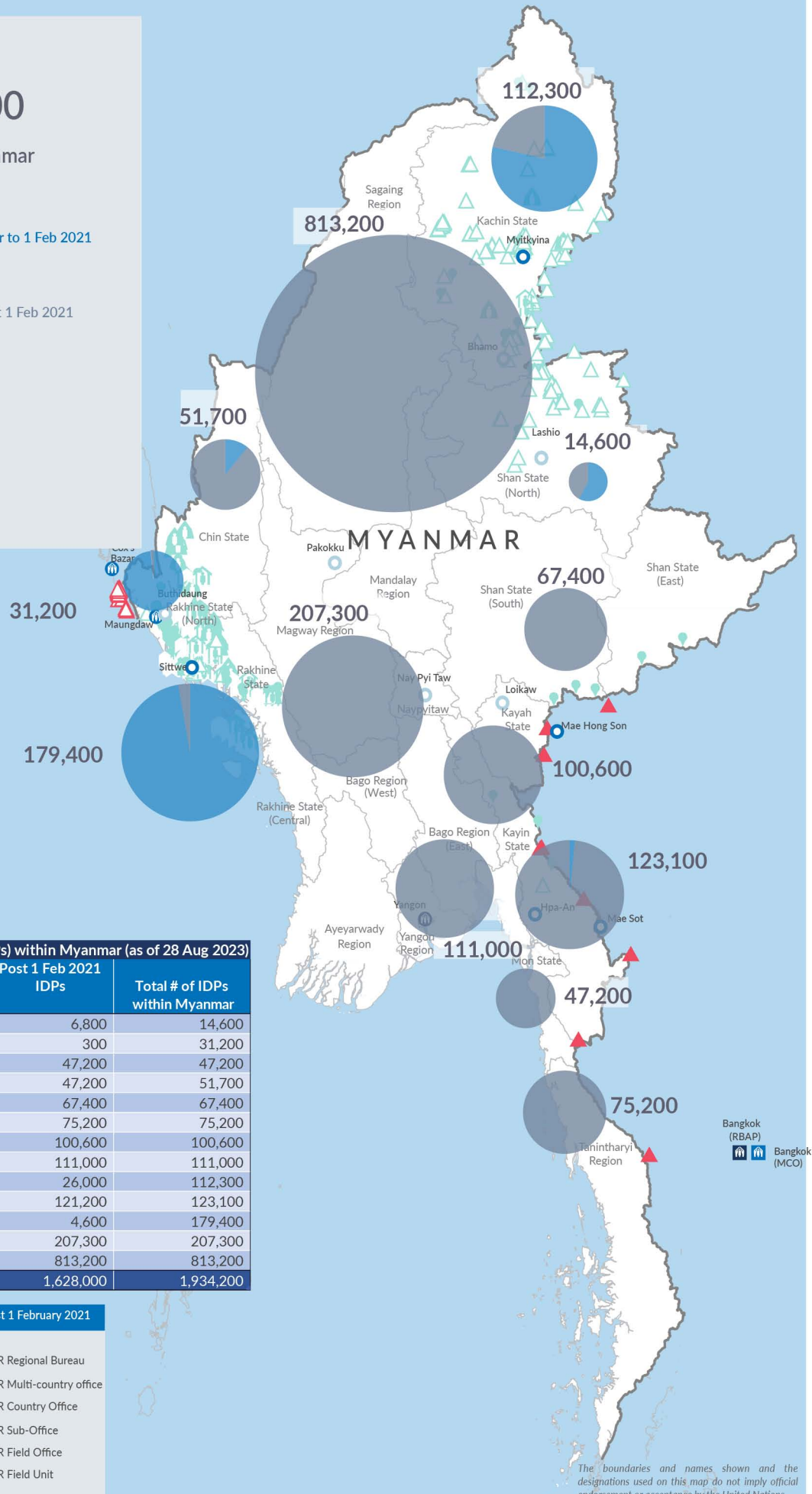
Estimated total IDPs within Myanmar


306,200
 Estimated # of IDPs displaced prior to 1 Feb 2021
(As of 30 Jun, 2023)


1,628,000
 Estimated # of IDPs displaced post 1 Feb 2021
(As of 28 Aug, 2023)
 Prior to 1 Feb 2021

 Post 1 Feb 2021

Source : UN in Myanmar


Estimated total internally displaced person (IDPs) within Myanmar (as of 28 Aug 2023)

| State/Region | Prior to 1 Feb 2021 IDPs | Post 1 Feb 2021 IDPs | Total # of IDPs within Myanmar |
|-------------------------|--------------------------|----------------------|--------------------------------|
| Shan State (North) | 7,800 | 6,800 | 14,600 |
| Rakhine State (North) | 30,900 | 300 | 31,200 |
| Mon State | - | 47,200 | 47,200 |
| Chin State | 4,500 | 47,200 | 51,700 |
| Shan State (South) | - | 67,400 | 67,400 |
| Tanintharyi Region | - | 75,200 | 75,200 |
| Kayah State | - | 100,600 | 100,600 |
| Bago Region (East) | - | 111,000 | 111,000 |
| Kachin State | 86,300 | 26,000 | 112,300 |
| Kayin State | 1,900 | 121,200 | 123,100 |
| Rakhine State (Central) | 174,800 | 4,600 | 179,400 |
| Magway Region | - | 207,300 | 207,300 |
| Sagaing Region | - | 813,200 | 813,200 |
| Grand Total | 306,200 | 1,628,000 | 1,934,200 |

 **Estimated internal displacement within Myanmar Pre+Post 1 February 2021**
(rounded to the nearest hundred)

-  IDP unplanned settlement (pre-1 Feb 2021)
-  IDP Center (pre-1 Feb 2021)
-  IDP spontaneous location (pre-1 Feb 2021)
-  IDP planned settlement (pre-1 Feb 2021)
-  Temporary shelter for displaced people from Myanmar
-  Refugee, planned settlement
-  International boundaries
-  UNHCR Regional Bureau
-  UNHCR Multi-country office
-  UNHCR Country Office
-  UNHCR Sub-Office
-  UNHCR Field Office
-  UNHCR Field Unit

The boundaries and names shown on this map do not imply official endorsement or acceptance by the United Nations