

## Total Arrivals from Ethiopia



**3,132**

Individuals Registered  
Source: UNHCR, COR  
As of 31 July 2023



**1,530**

Households

## Introduction:

In response to the influx of Ethiopian refugees into eastern Sudan, UNHCR and the Government of Sudan, in collaboration with other partners, opened Babikri settlement in Gedaref State on 28 November 2021 to accommodate the refugees relocated from the transit centres at the border to this site. Moreover, following the outbreak of conflict in Sudan in April 2023, hundreds of refugees and asylum-seekers have spontaneously arrived in the settlement after fleeing Khartoum and other unsafe areas. As of end July 2023, the camp accommodates 3,132 refugees (including secondarily displaced refugees), all of whom are biometrically registered and provided with assistance. The dashboard below presents the population profile for Babikri settlement:

## Persons With Specific Needs



**217**

Individuals



**94**

Unaccompanied/Separated Children

## Country of Origin

**2,914**

Ethiopians

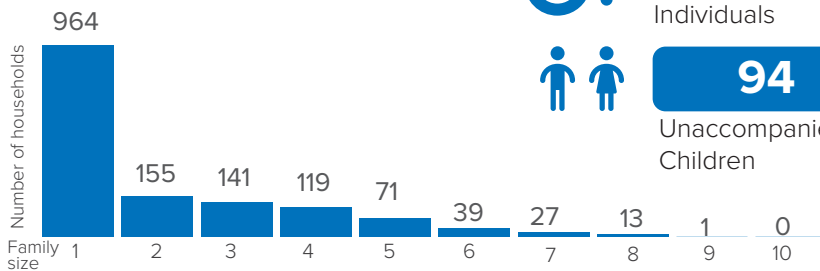
**217**

DRC

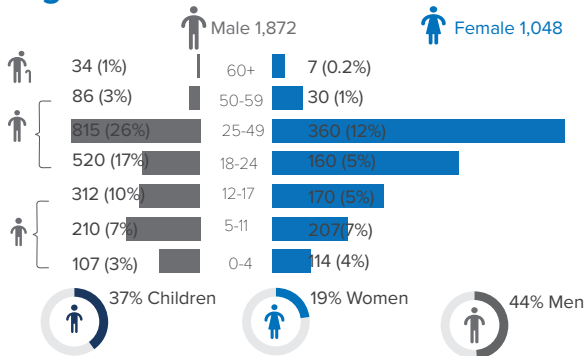
**1**

Eritrean

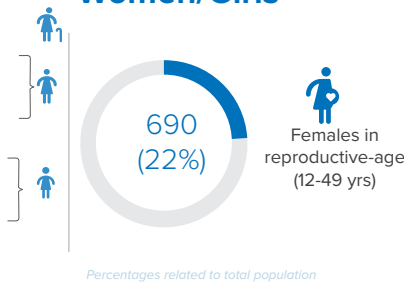
## Family Size



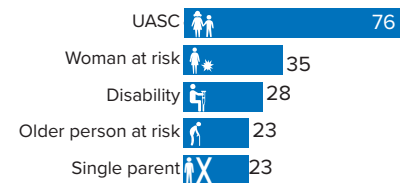
## Age-Gender Breakdown



## Reproductive-Age Women/Girls



## Specific Needs (top 5)



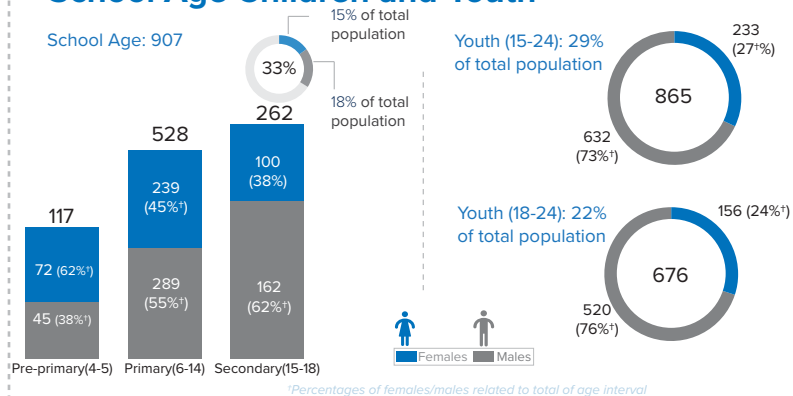
\*Unaccompanied or separated child  
Source: ProGRES v4/Rapp

## Occupation

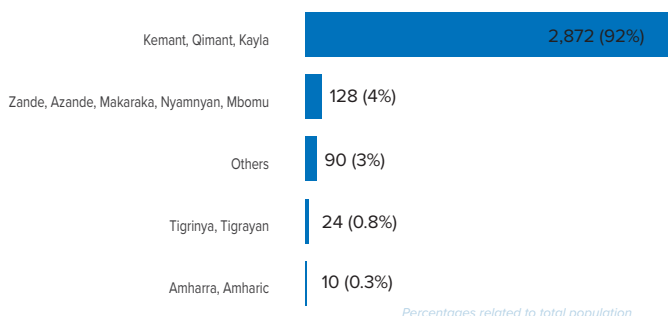


\*Occupation and skills of population aged 18 and above

## School Age Children and Youth



## Ethnicity (Top 4)



## Top 3 Areas of Origin (Ethiopia Admin 3)

