

Between January and June, 79 large-group displacement events have been reported, affecting 30,886 people (11,735 families). In June, seven events have been confirmed, impacting 1,949 people (801 families).

Even though this is the month with the fewest emergencies of large-group displacement events and affected people throughout the year, calculations should consider the pressure exerted by non-State armed groups (NSAGs) to prevent victims from reporting abuses or restrictions on humanitarian access in hard-to-reach areas with NSAGs presence.

The emergencies occurred in Argelia and Guapi in Cauca (two events), Bagadó, Medio San Juan, and Quibdó in Chocó (three events), Pueblo Rico in Risaralda (one event), and San Andrés de Tumaco in Nariño (one event).

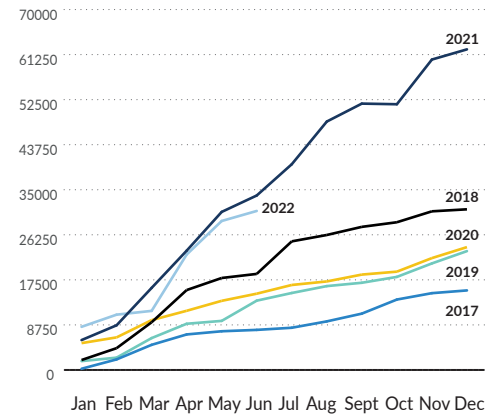
The most common causes continue to be direct and generalized threats, combats, armed confrontations, recruitment, use and utilization of children, harassments, and homicides. Afro-Colombian and indigenous populations were the most affected, as these events mostly occurred in rural areas comprising collective territories and indigenous reserves.

It is noteworthy the recurrence of events in Argelia, which has registered four displacement events in the last six months. Three of these events occurred in the district of Santa Clara and the other in the district of El Plateado.

It is also noticeable the occurrence of the first interdepartmental large-group displacement event in Chocó, affecting the community of Alto Andiadó in Bagadó, whose members had to relocate to Cali and Pereira.

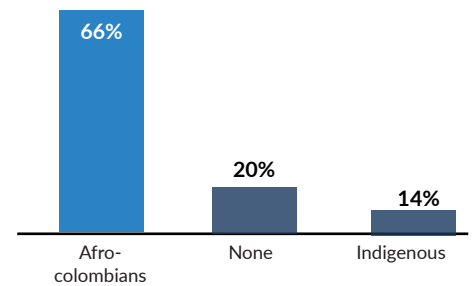
DISPLACEMENT OVER TIME¹

Number of people displaced (2017-2022)



January to June 2022:

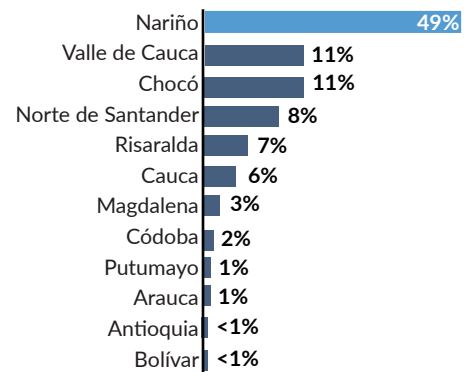
ETHNICITY



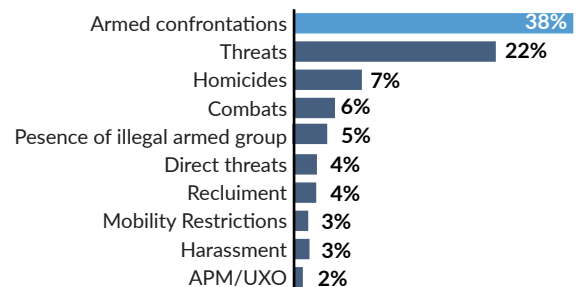
NATIONALITY

Less than 1% of the victims of large-group displacement events are of Venezuelan nationality.

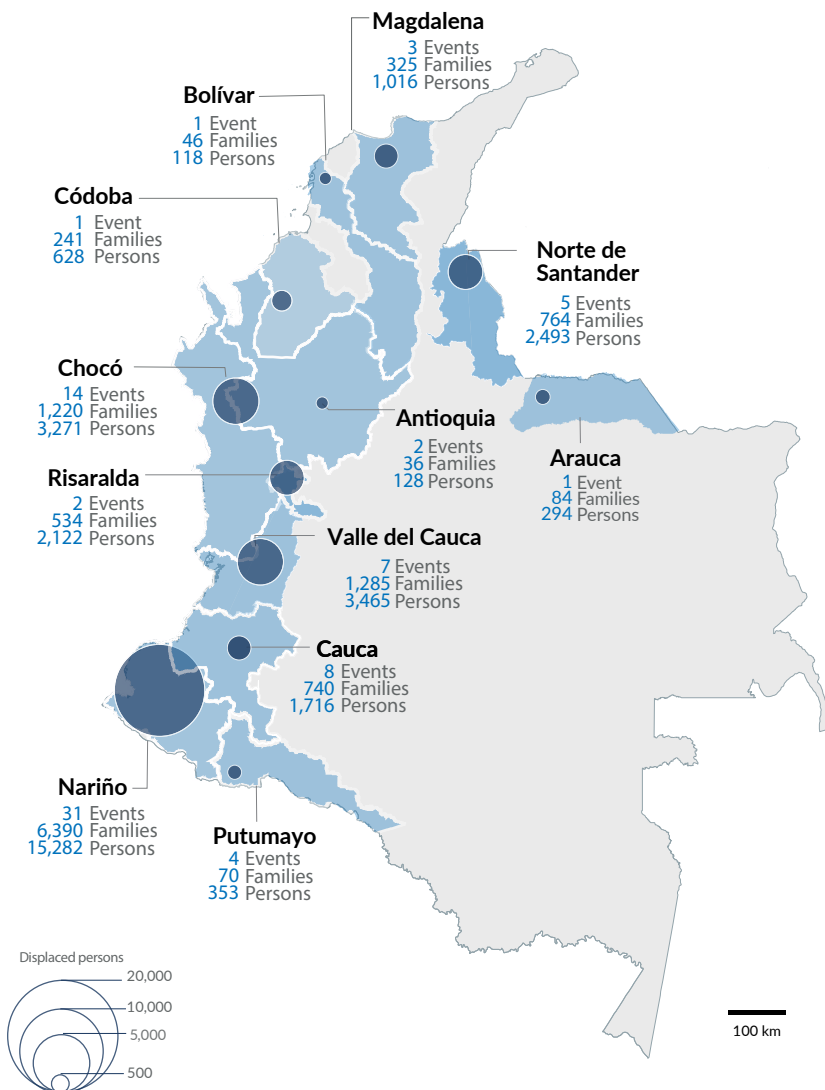
DISPLACEMENT BY DEPARTMENT



CAUSES OF DISPLACEMENT



 **79*** Events
 **11,735** Families
 **30,886** Persons



¹ Large-group displacement is defined as displacement events of more than 10 families or 50 people. Large-scale events presented in this infographic and monitored by UNHCR correspond solely to those that occurred in the areas covered by Field Offices.

* Large-group events are under constant verification and validation, therefore figures are subject to change.

Note: This document was produced with the support of the European Commission's Directorate-General for European Civil Protection and Humanitarian Aid Operations (ECHO).