

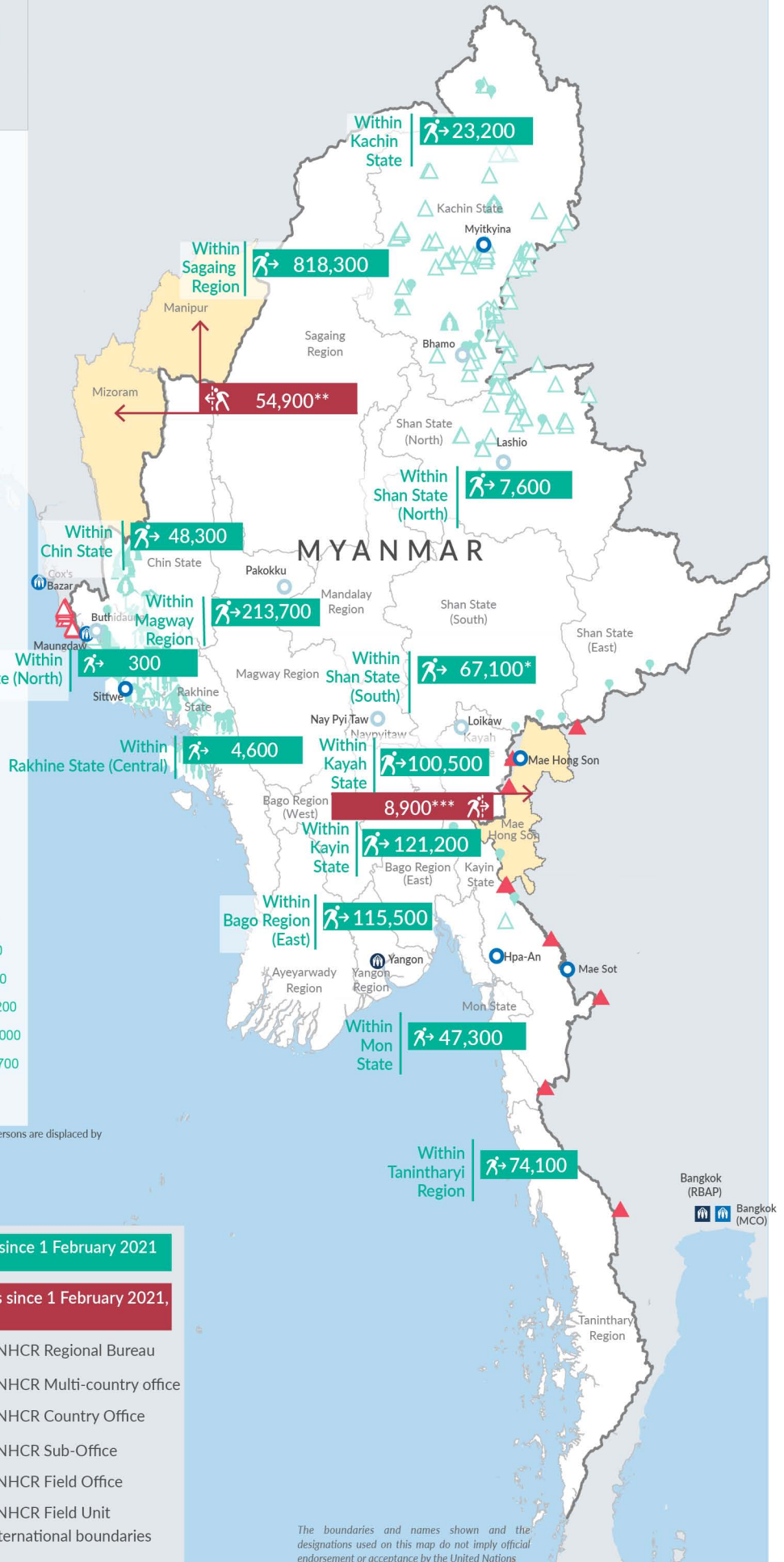
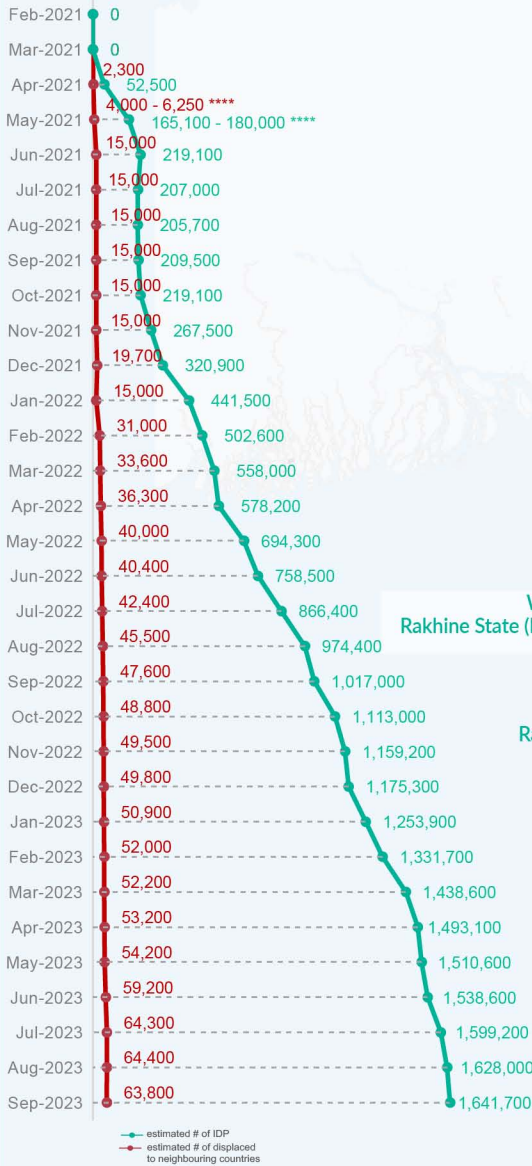
Key figures

Estimated # of IDPs → 1,641,700

Estimated # of displaced to neighbouring countries → 63,800

Source : UN in Myanmar

Estimated displacement figures by Month



*60,100 persons are displaced by armed conflict in neighbouring Kayah State while 7,000 persons are displaced by inter-EAO conflict between SSPP and RCSS.

**UN Estimates

***Estimates by Tak Border Command Center (TBCC)

****Range of figures was used while data collection was in progress.

Estimated internal displacement within Myanmar since 1 February 2021 (rounded to the nearest hundred)

Estimated displacement to neighbouring countries since 1 February 2021, who remain displaced (rounded to the nearest hundred)

- IDP unplanned settlement (pre-1 Feb 2021)
- IDP Center (pre-1 Feb 2021)
- IDP spontaneous location (pre-1 Feb 2021)
- IDP planned settlement (pre-1 Feb 2021)
- Temporary shelter for displaced people from Myanmar
- Refugee, planned settlement
- States/Provinces with new arrivals
- UNHCR Regional Bureau
- UNHCR Multi-country office
- UNHCR Country Office
- UNHCR Sub-Office
- UNHCR Field Office
- UNHCR Field Unit
- International boundaries

The boundaries and names shown and the designations used on this map do not imply official endorsement or acceptance by the United Nations

Key figures


1,947,900

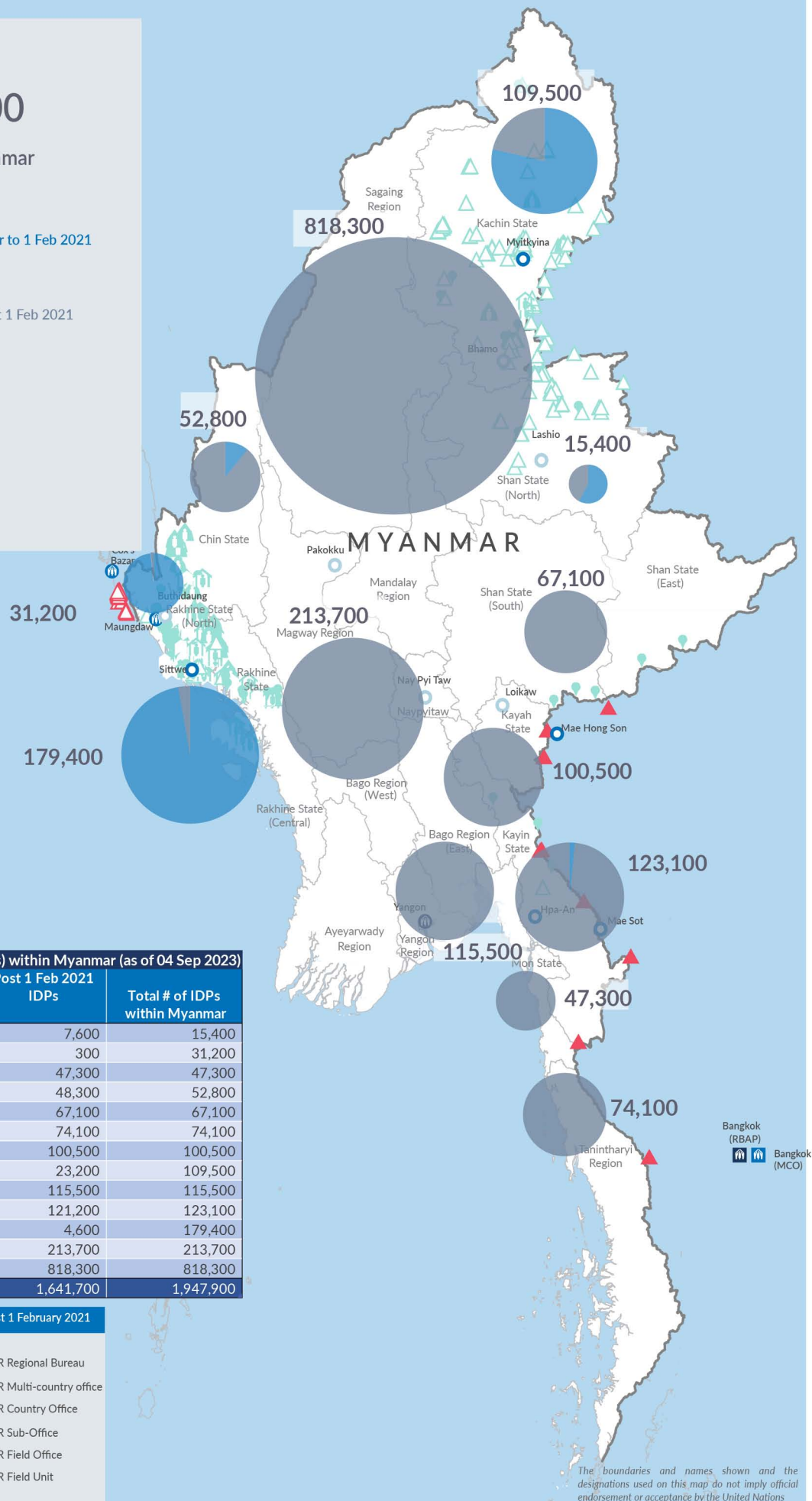
Estimated total IDPs within Myanmar


306,200
 Estimated # of IDPs displaced prior to 1 Feb 2021
(As of 30 Jun, 2023)

1,641,700
 Estimated # of IDPs displaced post 1 Feb 2021
(As of 04 Sep, 2023)
 Prior to 1 Feb 2021

 Post 1 Feb 2021

Source : UN in Myanmar


Estimated total internally displaced person (IDPs) within Myanmar (as of 04 Sep 2023)

State/Region	Prior to 1 Feb 2021 IDPs	Post 1 Feb 2021 IDPs	Total # of IDPs within Myanmar
Shan State (North)	7,800	7,600	15,400
Rakhine State (North)	30,900	300	31,200
Mon State	-	47,300	47,300
Chin State	4,500	48,300	52,800
Shan State (South)	-	67,100	67,100
Tanintharyi Region	-	74,100	74,100
Kayah State	-	100,500	100,500
Kachin State	86,300	23,200	109,500
Bago Region (East)	-	115,500	115,500
Kayin State	1,900	121,200	123,100
Rakhine State (Central)	174,800	4,600	179,400
Magway Region	-	213,700	213,700
Sagaing Region	-	818,300	818,300
Grand Total	306,200	1,641,700	1,947,900

Estimated internal displacement within Myanmar Pre+Post 1 February 2021 (rounded to the nearest hundred)

-  IDP unplanned settlement (pre-1 Feb 2021)
-  IDP Center (pre-1 Feb 2021)
-  IDP spontaneous location (pre-1 Feb 2021)
-  IDP planned settlement (pre-1 Feb 2021)
-  Temporary shelter for displaced people from Myanmar
-  Refugee, planned settlement
-  International boundaries
-  UNHCR Regional Bureau
-  UNHCR Multi-country office
-  UNHCR Country Office
-  UNHCR Sub-Office
-  UNHCR Field Office
-  UNHCR Field Unit

The boundaries and names shown and the designations used on this map do not imply official endorsement or acceptance by the United Nations