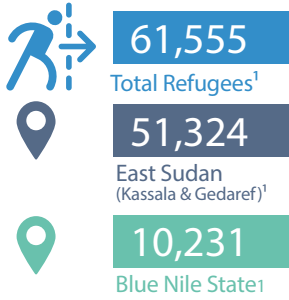
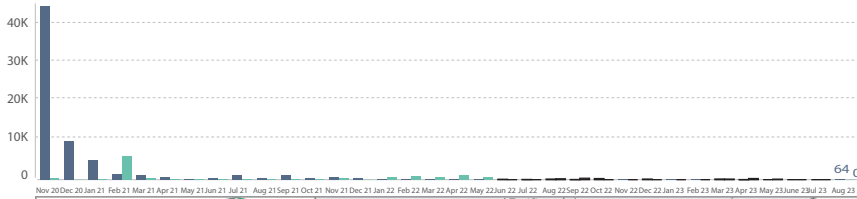


**Refugees from Ethiopia (Individuals)\***

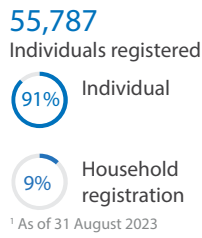


\* Sources: UNHCR, CoR

**Monthly Arrival Trends**



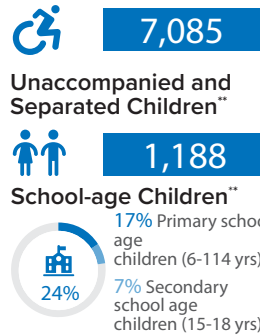
**Registration Status**



<sup>1</sup> As of 31 August 2023

Note: Figures have been revised based on verification exercise conducted in East Sudan all refugee locations. Blue Nile registered figures are included.

**Persons with Specific Needs\*\***



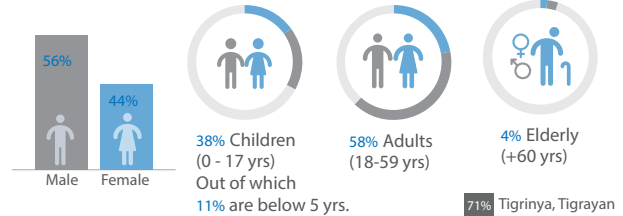
In November 2020, UNHCR started recording an influx of Ethiopian refugees at the border entry points in East Sudan from northern Ethiopia, after military confrontations in the Tigray region.

UNHCR's teams on the ground in the eastern Sudanese states of Kassala and Gedaref are working with the Sudanese Commissioner for Refugees (CoR), local authorities and partners to continue monitor and respond to the situation, as well as mobilizing resources to provide life-saving assistance services to the new arrivals.

Inter-agency coordination is well established.

Similarly, Ethiopian asylum seekers have been crossing from Benishangul-Gumuz region into Sudan's Blue Nile State. UNHCR, CoR and partners are also on the ground to respond to their needs.

**Age-gender Breakdown\*\***



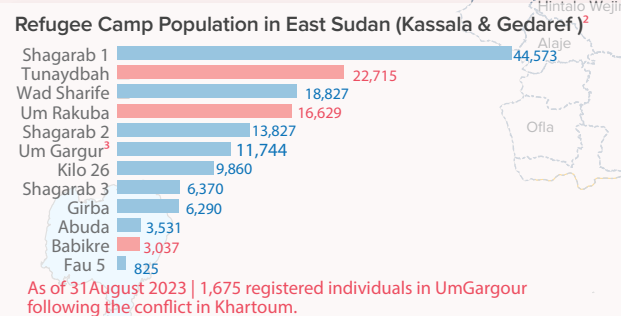
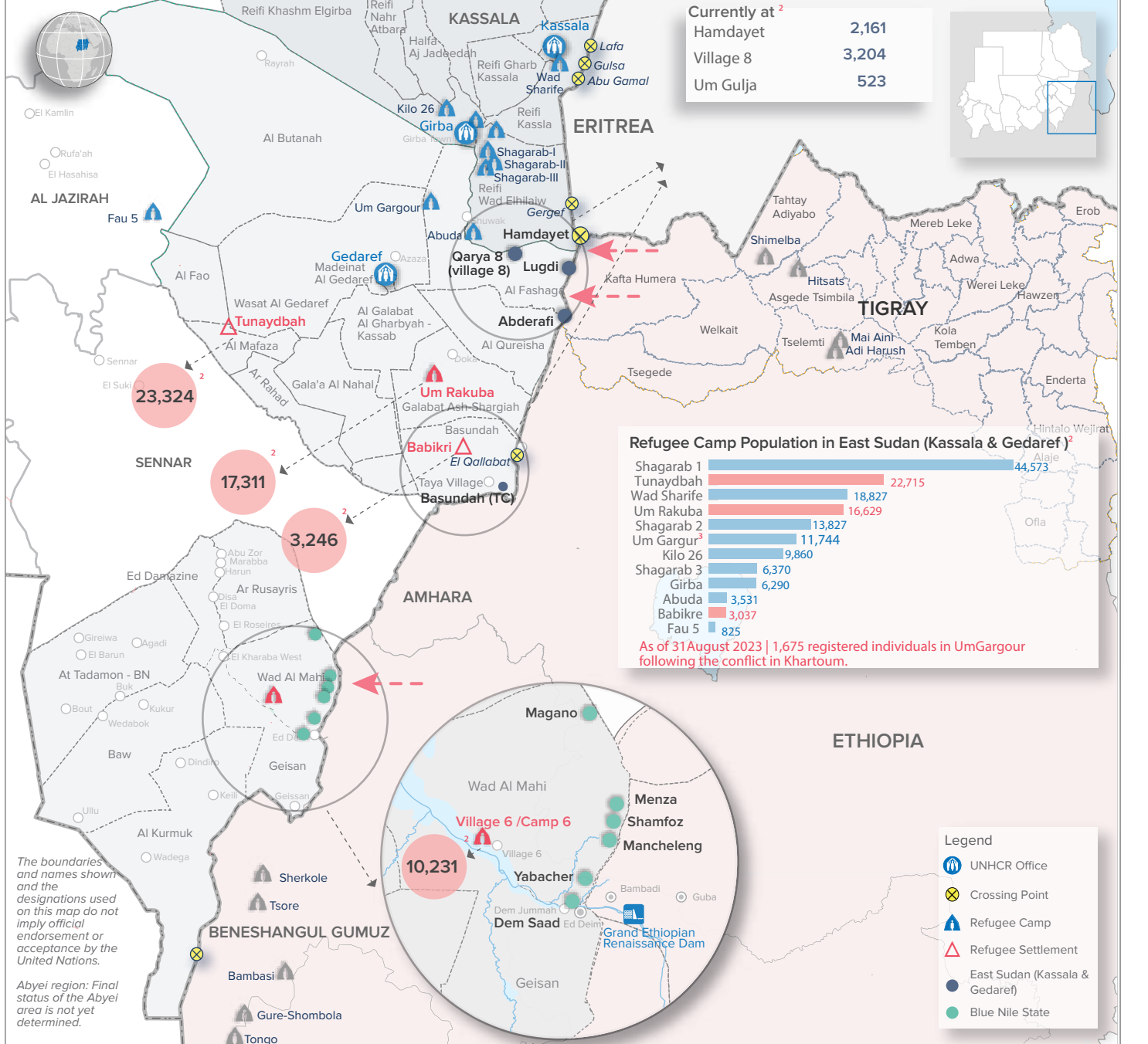
**Ethnic Groups\***



Population distribution statistics are based on registered individuals in Gedaref & Bule Nile.

**Currently at<sup>2</sup>**

Hamdayet	2,161
Village 8	3,204
Um Gulja	523



**Legend**

- UNHCR Office
- Crossing Point
- Refugee Camp
- Refugee Settlement
- East Sudan (Kassala & Gedaref)
- Blue Nile State

