

Total Arrivals from Ethiopia


23,324

 Individuals Registered
 Source: UNHCR, COR
 As of 31 August 2023

9,034

Households Registered

Introduction:

In response to the influx of Ethiopian refugees into eastern Sudan, UNHCR and the Government of Sudan, in collaboration with other partners, opened Tunaydbah refugee camp in Gedaref State on 3 January 2021 to accommodate the refugees relocated from the transit centres at the border to this site. The majority of the refugees in Tunaydbah camp are from the Tigray region of Ethiopia. As of end August 2023, the camp accommodates 23,324 refugees, all of whom are biometrically registered and provided with assistance. The dashboard below presents the population profile for Tunaydbah camp.

Persons With Specific Needs


2,124

Individuals


361

Unaccompanied/Separated Children

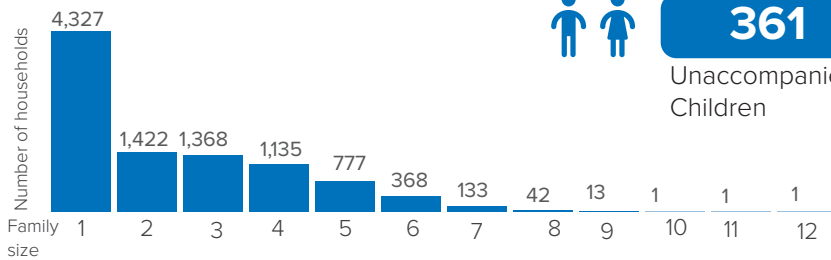
Country of Origin

23,278

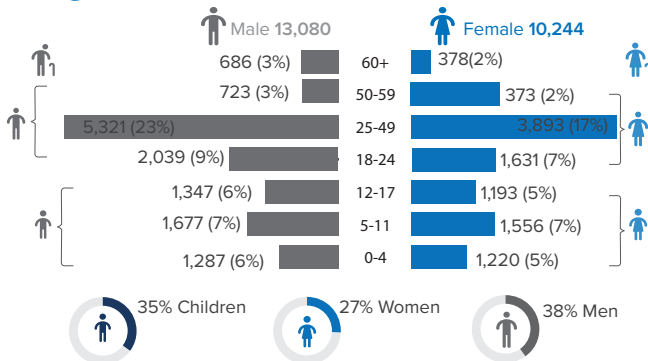
Ethiopians

46

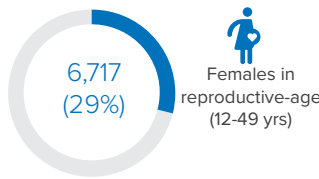
Eritreans



Age-Gender Breakdown

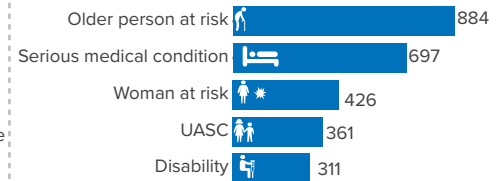


Reproductive- Age Women/Girls

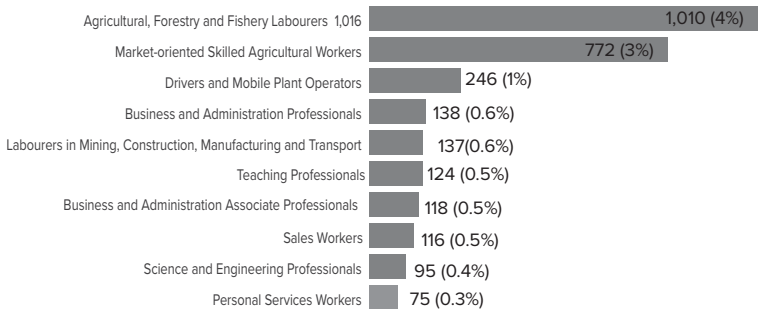


Percentages related to total population

Specific Needs (top 5)

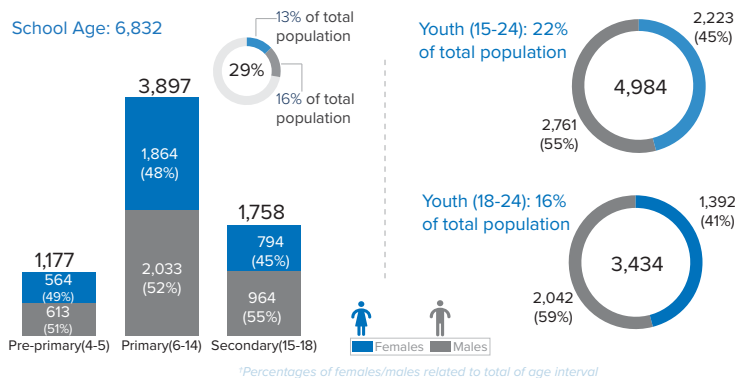

 Source: ProGres v4/Rapp
 *UASC: Unaccompanied or separated child

Occupation (Top 10)

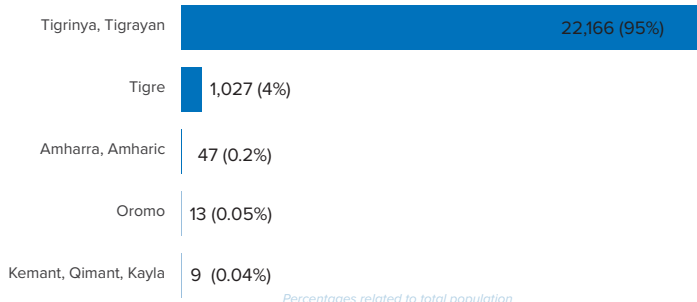


*Occupation and skills of population aged 18 and above. Percentages related to total population

School Age Children and Youth



Ethnicity (Top 5)



Top 5 Areas of Origin (Ethiopia Admin 3)

