

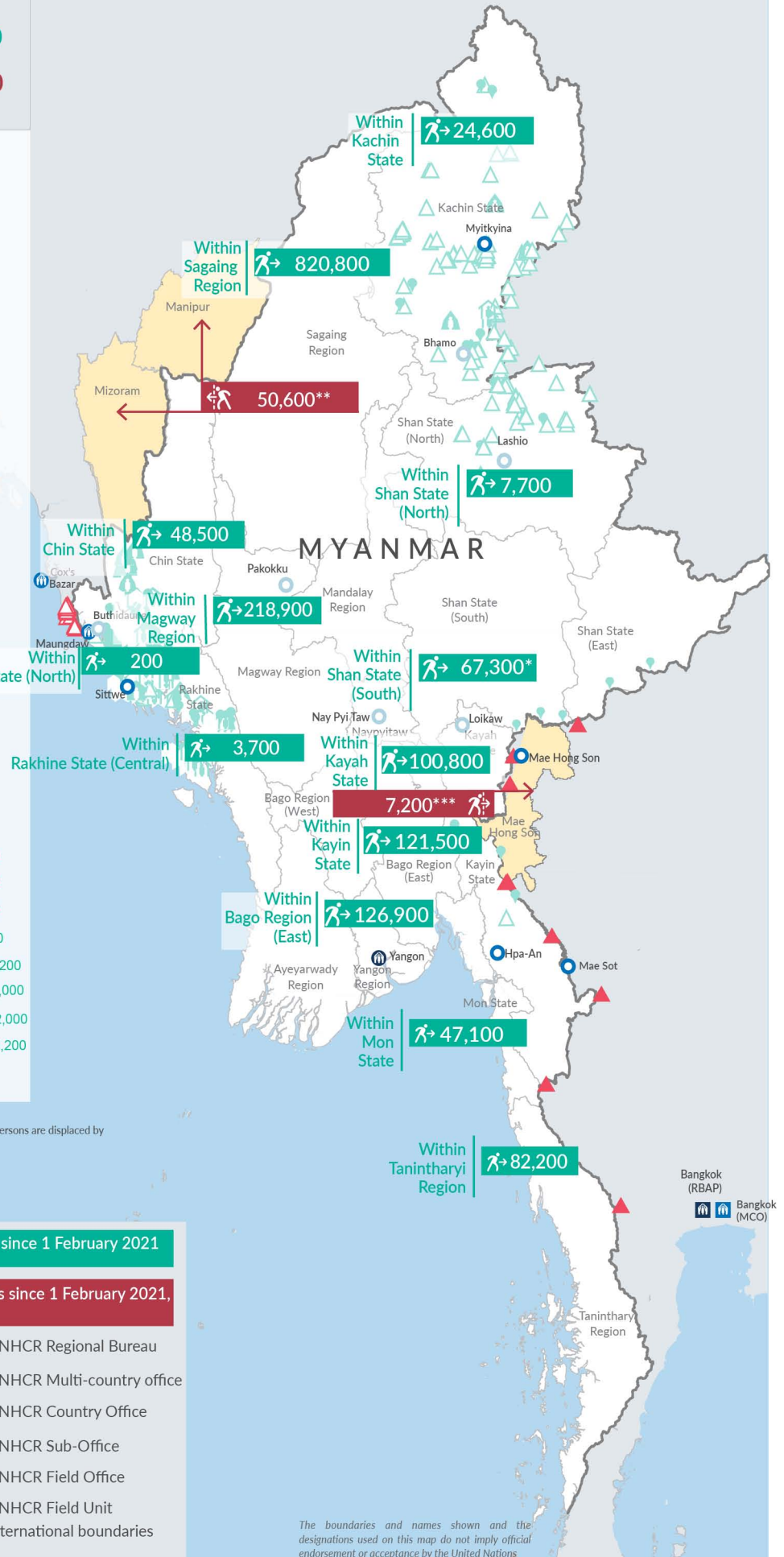
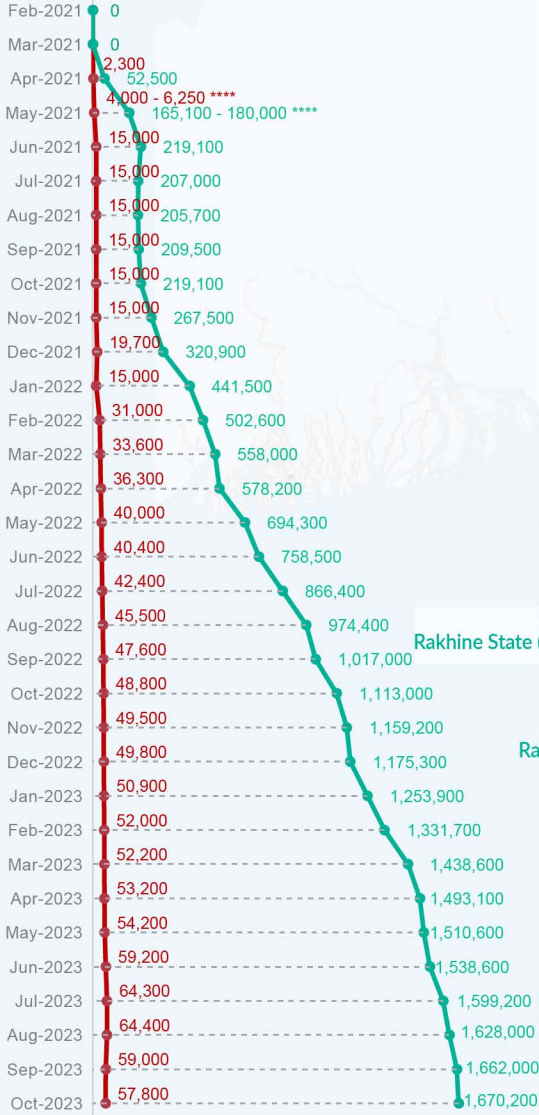
Key figures

Estimated # of IDPs → 1,670,200

Estimated # of displaced to neighbouring countries → 57,800

Source : UN in Myanmar

Estimated displacement figures by Month



*60,300 persons are displaced by armed conflict in neighbouring Kayah State while 7,000 persons are displaced by inter-EAO conflict between SSPP and RCSS.

**UN Estimates

***Estimates by Tak Border Command Center (TBCC)

****Range of figures was used while data collection was in progress.

Estimated internal displacement within Myanmar since 1 February 2021 (rounded to the nearest hundred)

Estimated displacement to neighbouring countries since 1 February 2021, who remain displaced (rounded to the nearest hundred)

- IDP unplanned settlement (pre-1 Feb 2021)
- IDP Center (pre-1 Feb 2021)
- IDP spontaneous location (pre-1 Feb 2021)
- IDP planned settlement (pre-1 Feb 2021)
- Temporary shelter for displaced people from Myanmar
- Refugee, planned settlement
- States/Provinces with new arrivals
- UNHCR Regional Bureau
- UNHCR Multi-country office
- UNHCR Country Office
- UNHCR Sub-Office
- UNHCR Field Office
- UNHCR Field Unit
- International boundaries

The boundaries and names shown and the designations used on this map do not imply official endorsement or acceptance by the United Nations

Key figures


1,976,400

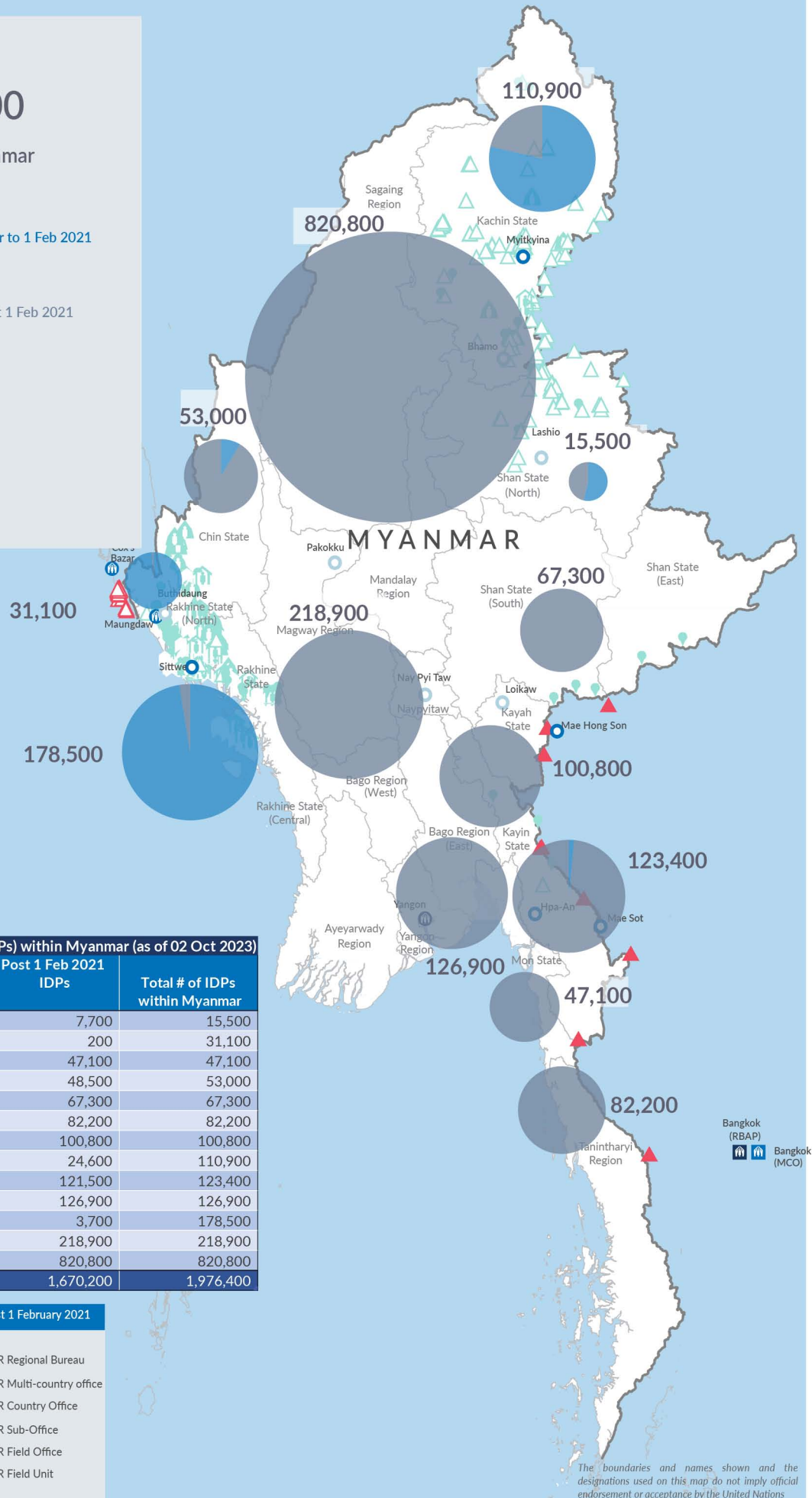
Estimated total IDPs within Myanmar


306,200
 Estimated # of IDPs displaced prior to 1 Feb 2021
(As of 30 Jun, 2023)

1,670,200
 Estimated # of IDPs displaced post 1 Feb 2021
(As of 02 Oct, 2023)
 Prior to 1 Feb 2021


 Post 1 Feb 2021

Source : UN in Myanmar



Estimated total internally displaced person (IDPs) within Myanmar (as of 02 Oct 2023)

State/Region	Prior to 1 Feb 2021 IDPs	Post 1 Feb 2021 IDPs	Total # of IDPs within Myanmar
Shan State (North)	7,800	7,700	15,500
Rakhine State (North)	30,900	200	31,100
Mon State	-	47,100	47,100
Chin State	4,500	48,500	53,000
Shan State (South)	-	67,300	67,300
Tanintharyi Region	-	82,200	82,200
Kayah State	-	100,800	100,800
Kachin State	86,300	24,600	110,900
Kayin State	1,900	121,500	123,400
Bago Region (East)	-	126,900	126,900
Rakhine State (Central)	174,800	3,700	178,500
Magway Region	-	218,900	218,900
Sagaing Region	-	820,800	820,800
Grand Total	306,200	1,670,200	1,976,400

 Estimated internal displacement within Myanmar Pre+Post 1 February 2021
(rounded to the nearest hundred)

-  IDP unplanned settlement (pre-1 Feb 2021)
-  IDP Center (pre-1 Feb 2021)
-  IDP spontaneous location (pre-1 Feb 2021)
-  IDP planned settlement (pre-1 Feb 2021)
-  Temporary shelter for displaced people from Myanmar
-  Refugee, planned settlement
-  International boundaries
-  UNHCR Regional Bureau
-  UNHCR Multi-country office
-  UNHCR Country Office
-  UNHCR Sub-Office
-  UNHCR Field Office
-  UNHCR Field Unit

The boundaries and names shown and the designations used on this map do not imply official endorsement or acceptance by the United Nations