

Total Arrivals from Ethiopia


23,642

 Individuals Registered
 Source: UNHCR, COR
 As of 30 September 2023

9,733

Households Registered

Introduction:

In response to the influx of Ethiopian refugees into eastern Sudan, UNHCR and the Government of Sudan, in collaboration with other partners, opened Tunaydbah refugee camp in Gedaref State on 3 January 2021 to accommodate the refugees relocated from the transit centres at the border to this site. The majority of the refugees in Tunaydbah camp are from the Tigray region of Ethiopia. As of end September 2023, the camp accommodates 23,642 refugees, all of whom are biometrically registered and provided with assistance. The dashboard below presents the population profile for Tunaydbah camp.

Persons With Specific Needs


2,124

Individuals


265

Unaccompanied/Separated Children

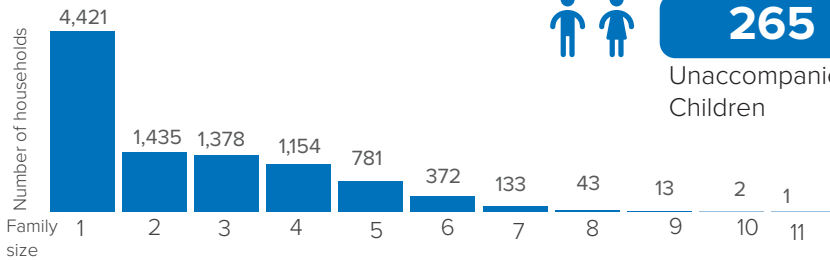
Country of Origin

23,582

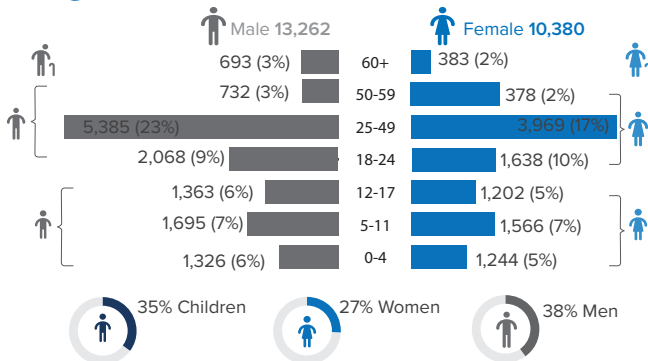
Ethiopians

60

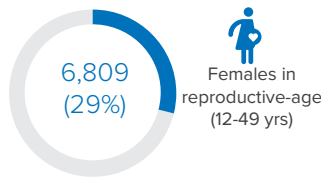
Eritreans



Age-Gender Breakdown

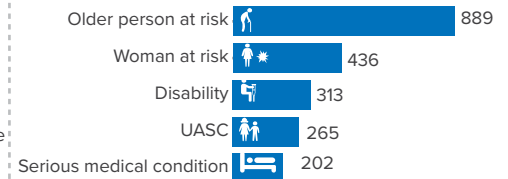


Reproductive- Age Women/Girls

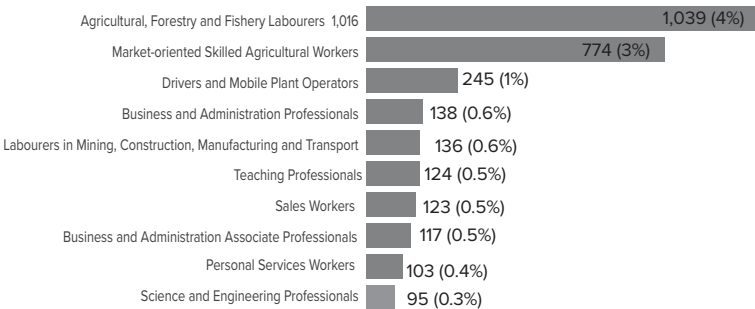


Percentages related to total population

Specific Needs (top 5)

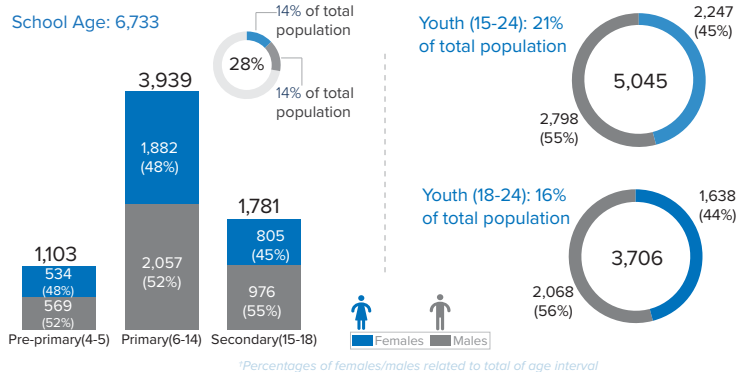

 Source: ProGres v4/Rapp
 *UASC: Unaccompanied or separated child

Occupation (Top 10)

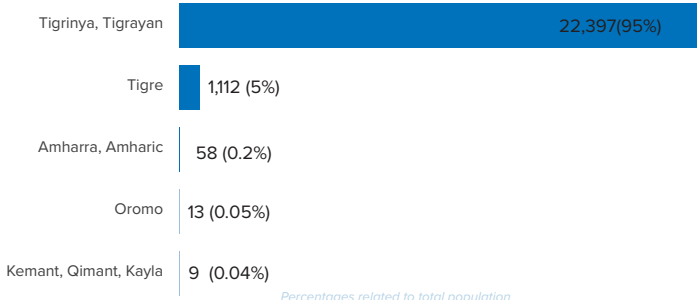


*Occupation and skills of population aged 18 and above Percentages related to total population

School Age Children and Youth



Ethnicity (Top 5)



Top 5 Areas of Origin (Ethiopia Admin 3)

