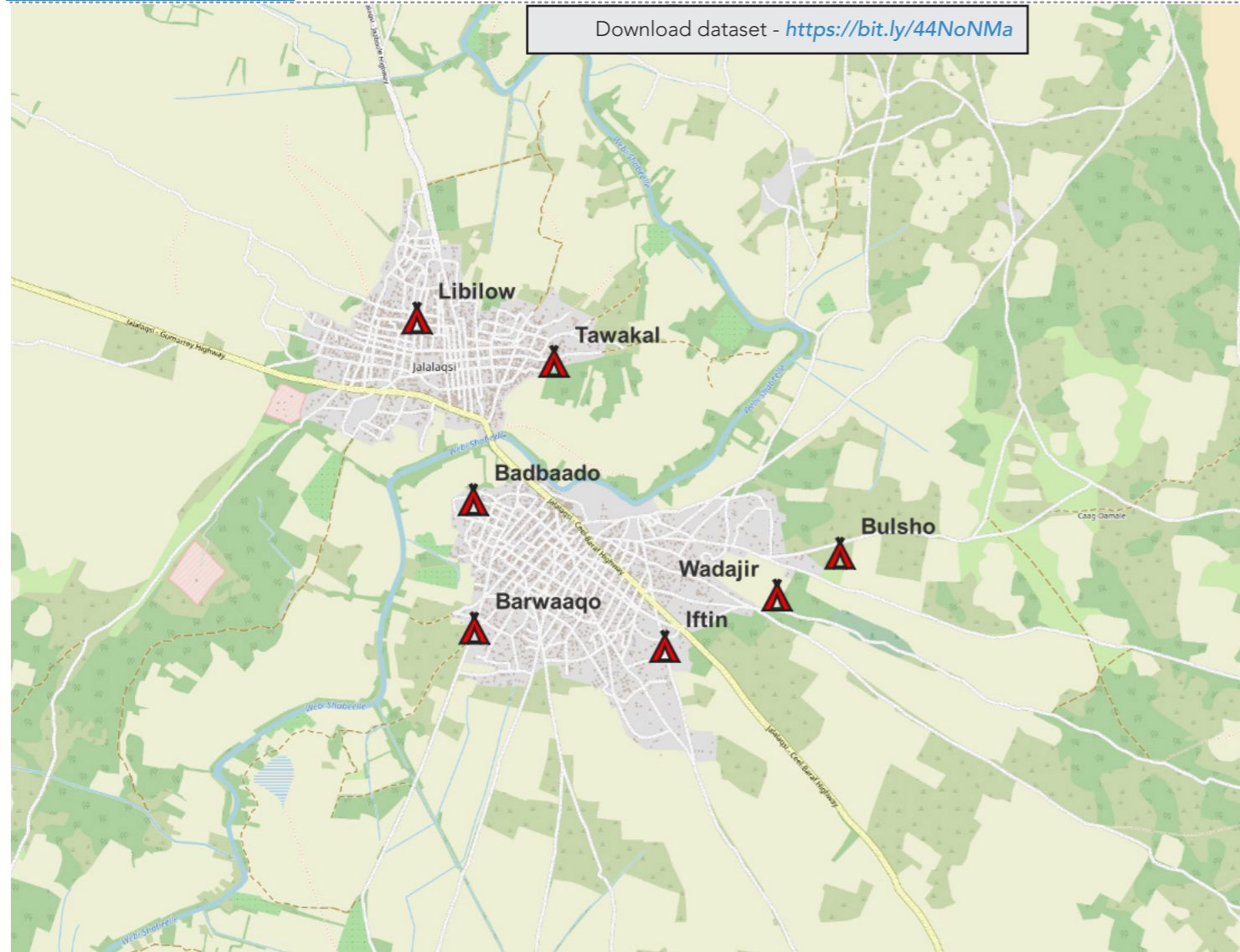


Download dataset - <https://bit.ly/44NoNMa>



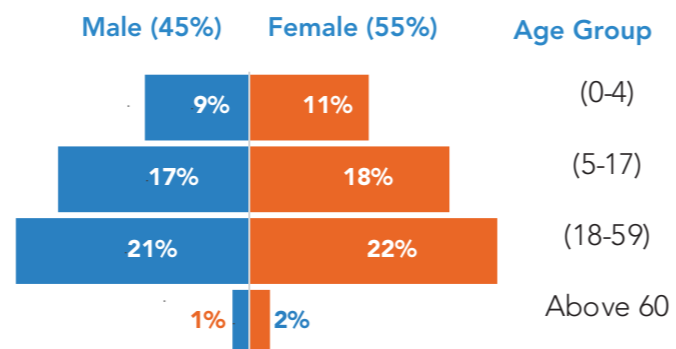
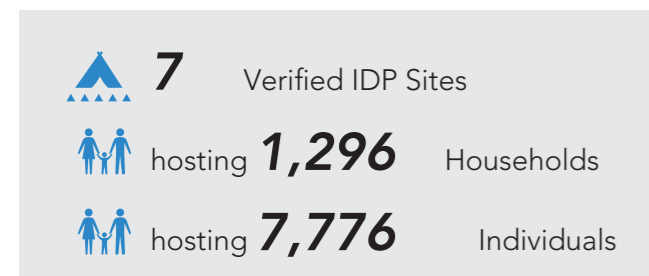
Map of verified IDP sites in Jalalaqsi - September 2023

### Assessment overview

An IDP site verification exercise was conducted in Jalalaqsi in September 2023. The operation was led by PDA, MRDO, INTERSOM, ARD, Insani, Ayuubing, IRDO, Socdo, HCRI, Daryeel, NRC and SOS. 7 IDP sites were identified hosting 1,296 households or 7,776 individuals.

Compared to the last site verification conducted in September 2022, there was no increase in sites, a decrease of 889 Households or 4,188 individuals.

### Demographic data of IDPs living in Jalalaqsi



### Eviction Risk Mapping

IDP sites were assessed based on their risk of eviction. Several factors were put into consideration such as IDP site tenure, type of agreements in place and whether an eviction notice has been issued recently.

**29%** of IDP sites have been classified as having extreme (14.29%) and high (14.29%) risk of eviction

- 71%** of sites are communal/permanent ownership
- 29%** of sites have no agreements in place
- 0%** of those that have agreements have oral agreements
- 100%** of those that have agreements have agreed end dates
- 14%** of sites have been issued with eviction notice within the last 3 months

### Flood Risk Mapping

IDP sites were assessed based on their risk of flooding.

**None** of the IDP sites (0%) have been classified as having a high risk of flooding

