

Livelihood and Economic Inclusion – Cooperatives Overview

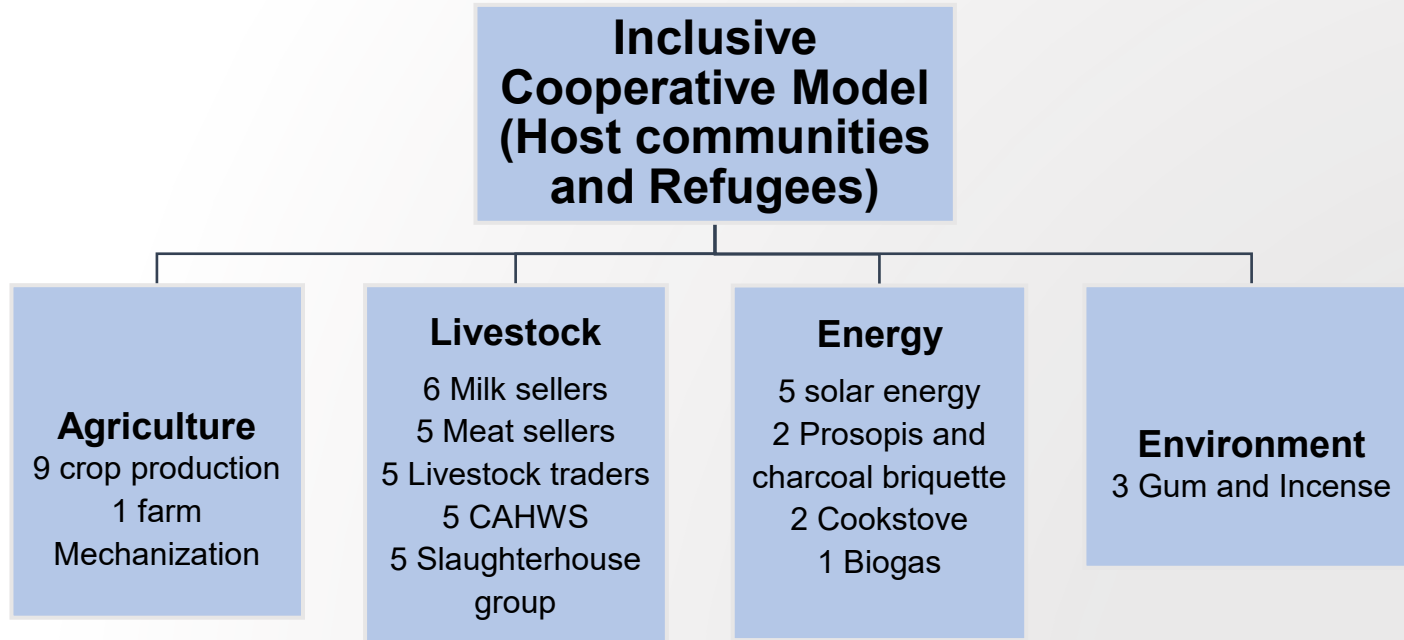
UNHCR Sub-Office Melkadida (SOMEL)

05 October 2023

Outline

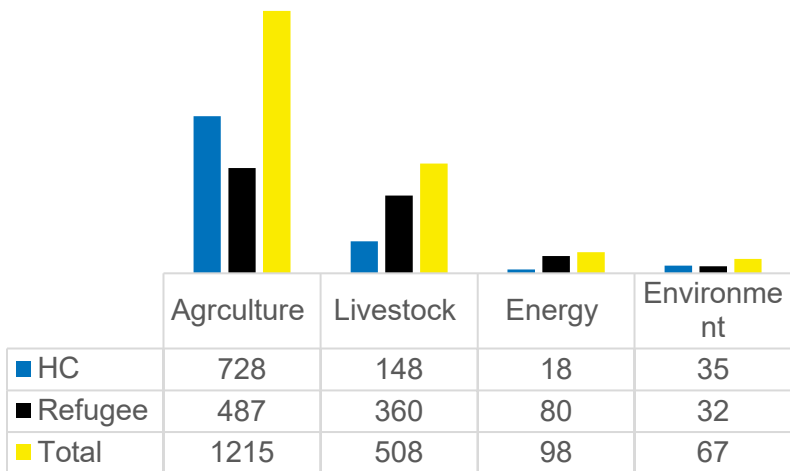
- Type of cooperatives and groups including sub-sector
- Membership of cooperatives by gender and status
- Overview of cooperative governance structure
- Agriculture cooperatives – investments made
- Summary findings of initial assessment
- Overview of agriculture cooperatives stocktaking report
- Cooperative Sustainability Actions based on stocktaking report
- Evaluation findings 2019-2021
- Agriculture Cooperative transition actions – IFC

Overview of the Cooperative Enterprise Development

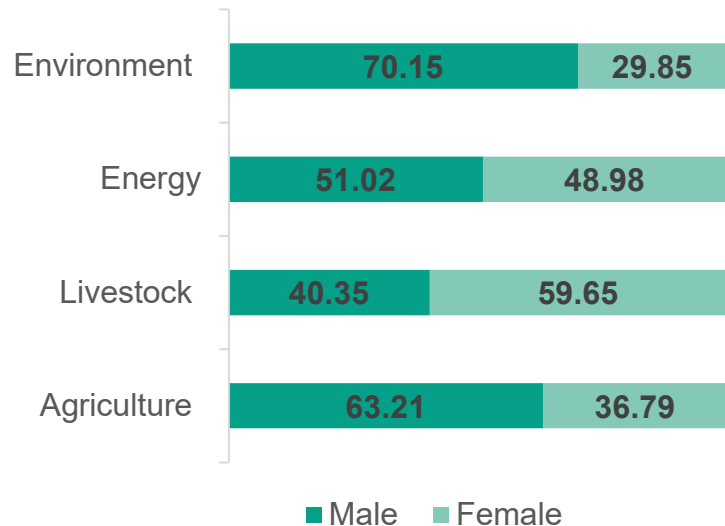


Cooperative Composition

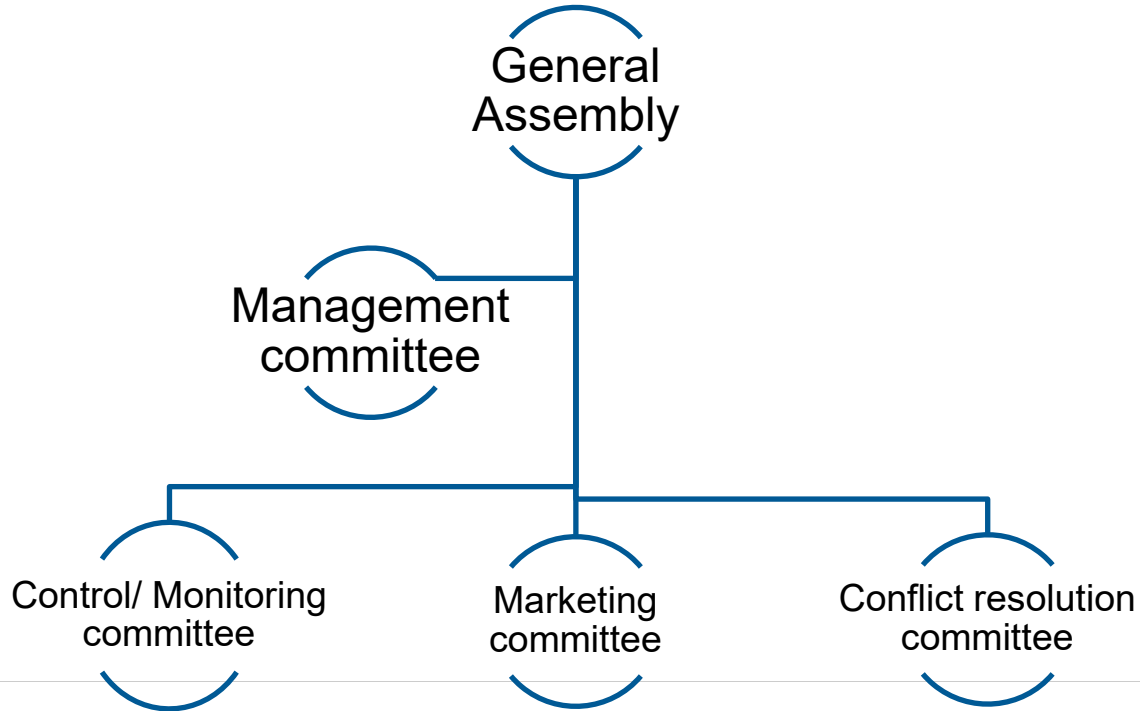
Cooperative membership by status



Cooperative Membership by Gender



Cooperative Governance Structure



Agriculture Production Investment 2015 - Present

Infrastructure and Assets Investment

- ❖ Physical – 29.290km canal
- ❖ 10 pumphouses
 - 18 water pumps,
 - Solarized irrigation (Pilot) 2 solar water pumps @37kw
- ❖ 6 tractors
- ❖ Farm mechanization workshop
- ❖ 9 maize shellers
- ❖ 9 granaries

On going support

- ❖ Agriculture input support
- ❖ Targeted coop capacity development
- ❖ Monitoring
- ❖ Technical trainings
- ❖ Access and linkage to formal financial services
- ❖ Market Linkage

Assessing Agriculture cooperatives – Initial assessment (main findings)



- Cooperative registered and certified as primary cooperatives
- Low female participation in the Agriculture cooperatives (38% female)
- Employment in farming: precarious work
- Only 63% hectares of land was cultivated
- Informal marketing strategies

Agriculture Cooperative Stocktaking



Cooperative member value and engagement: To determine the ability of the cooperatives to fulfil the membership obligations and provides a deeper understanding of the value perception of the cooperative members.



Member economic participation: To determine the members' contribution and control of the capital of their cooperative as another facet of cooperative identity



Land shareholding, management and use: The rationale of the cooperative management of land and other resources identifying the major issues, options and approaches

Key Sustainability Actions based on Stocktaking

- Business development through targeted cooperative capacity development
- Enhanced monitoring of the cooperative basic business data.
- Enhanced collaboration with government to strengthen technical support to cooperatives.
- Enhanced Advocacy on financial inclusion and linking cooperatives with financial service providers
- Developing sustainability plan/strategy for the cooperatives e.g for crop transition to IFC private sector partnership.

Evaluation 2019-2021 findings: Transformational Change of the Cooperatives

- Cooperative capacity assessment with baseline and endline data
- Key findings:
 - Improved food security for cooperative members compared to non participants
 - Increased social cohesion by building social capital among the members
 - Increased income for the members
 - Attraction of private sector investment leading broader development
 - Improved markets and Livelihood opportunities
 - Improved women economic empowerment.
- Planned dedicated presentation at later stage for EHAGL WG members

IFC Climate-smart share farming model

- Key UNHCR supporting actions in line with jointly agreed transition plan:
 - Compilation and verification of cooperatives background documents (registration processes, audit and inspection by Somali Region Cooperative Agency, membership register, asset register)
 - Development and sharing of Protection consideration guidance and proposed mitigation measures jointly with RRS
 - Support on community engagement on land rights, refugee inclusion including right to work/ employment opportunities within model, water use rights
 - Participation in Advisory council
 - Transitional support to agriculture cooperatives due to delays (2022 and first season 2023) – provision of inputs and related support