

As the conflict in Sudan continues and in light of the number of people having already fled to Chad, the Chadian Government estimates that up to **600,000*** refugees and returnees could arrive in Chad by the end of 2023

Context

Since the beginning of the conflict in Sudan on 15 April 2023, the CNARR, UNHCR, and IOM have been registering an **influx of Sudanese refugees and Chadian returnees from Darfur** through over 32 border entry points in eastern Chad. In the provinces of Ouaddaï, Sila, and Wadi Fira humanitarian teams are working in support of the Chadian Government and local authorities to provide **reception, protection, and address to most urgent humanitarian needs of refugees in spontaneous settlements**. UNHCR has relocated 42% refugees away from spontaneous border sites to existing and newly established refugees settlements. Host populations are benefitting from the establishment and/or strengthening of services in host villages.



442,250** Fixed new arrivals
130,935 Households
35 Host villages

Fixed new arrivals per province

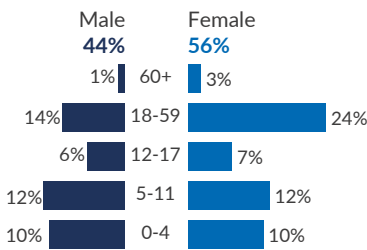


Individual biometric registration

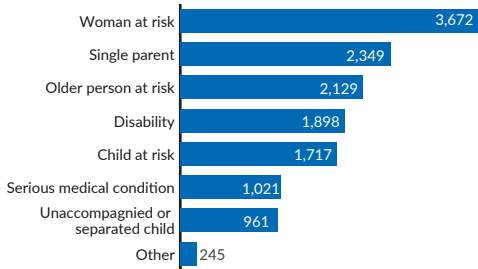
(Gaga, Farchana, Abéché, Oure Cassoni, Iridimi, Ourang, Adré, Touloum & Kounougou refugees settlements)

80,545 Registered
23,230 Households
85% registered are women & children
17% registered have specific needs

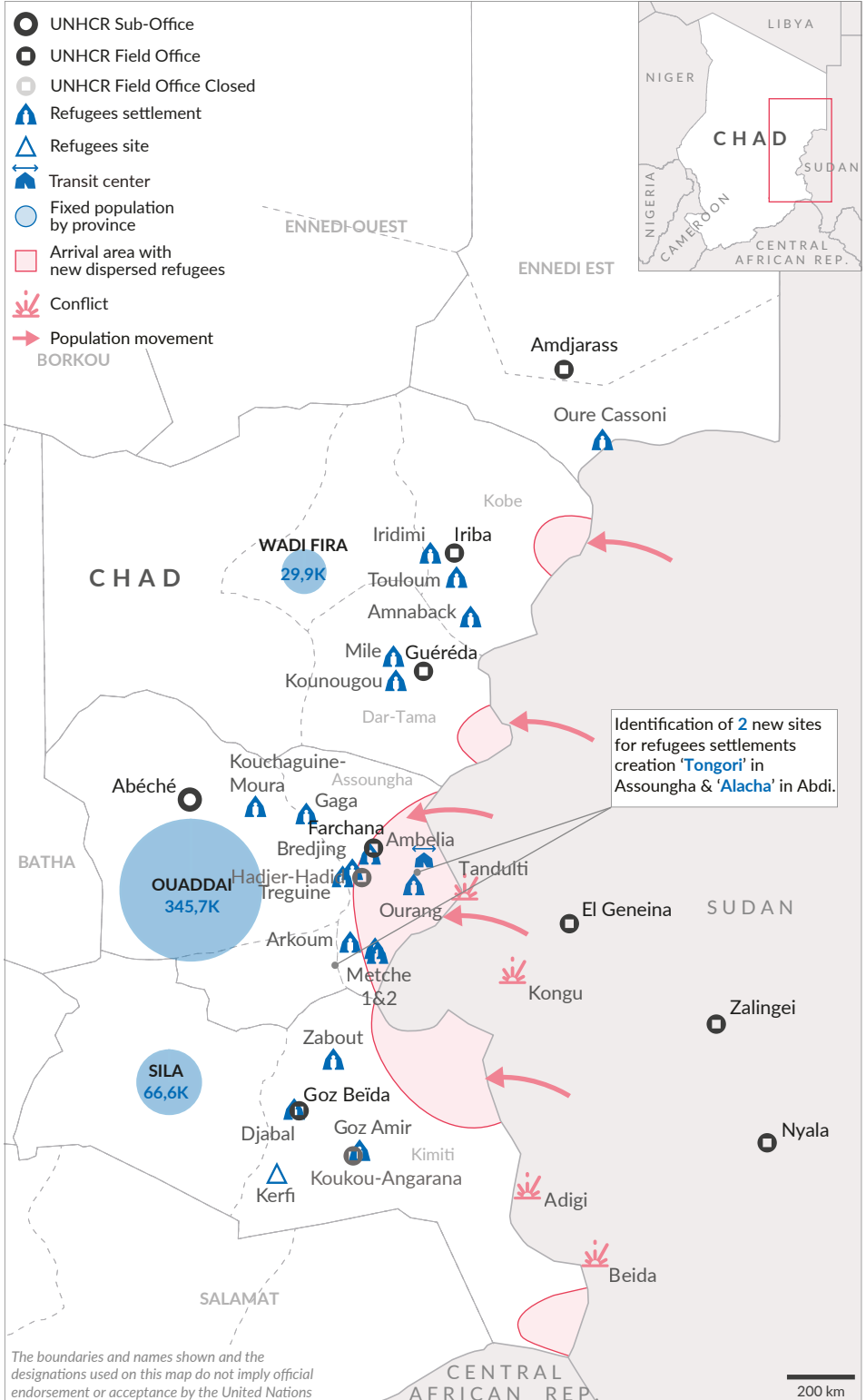
Age and gender breakdown of registered persons



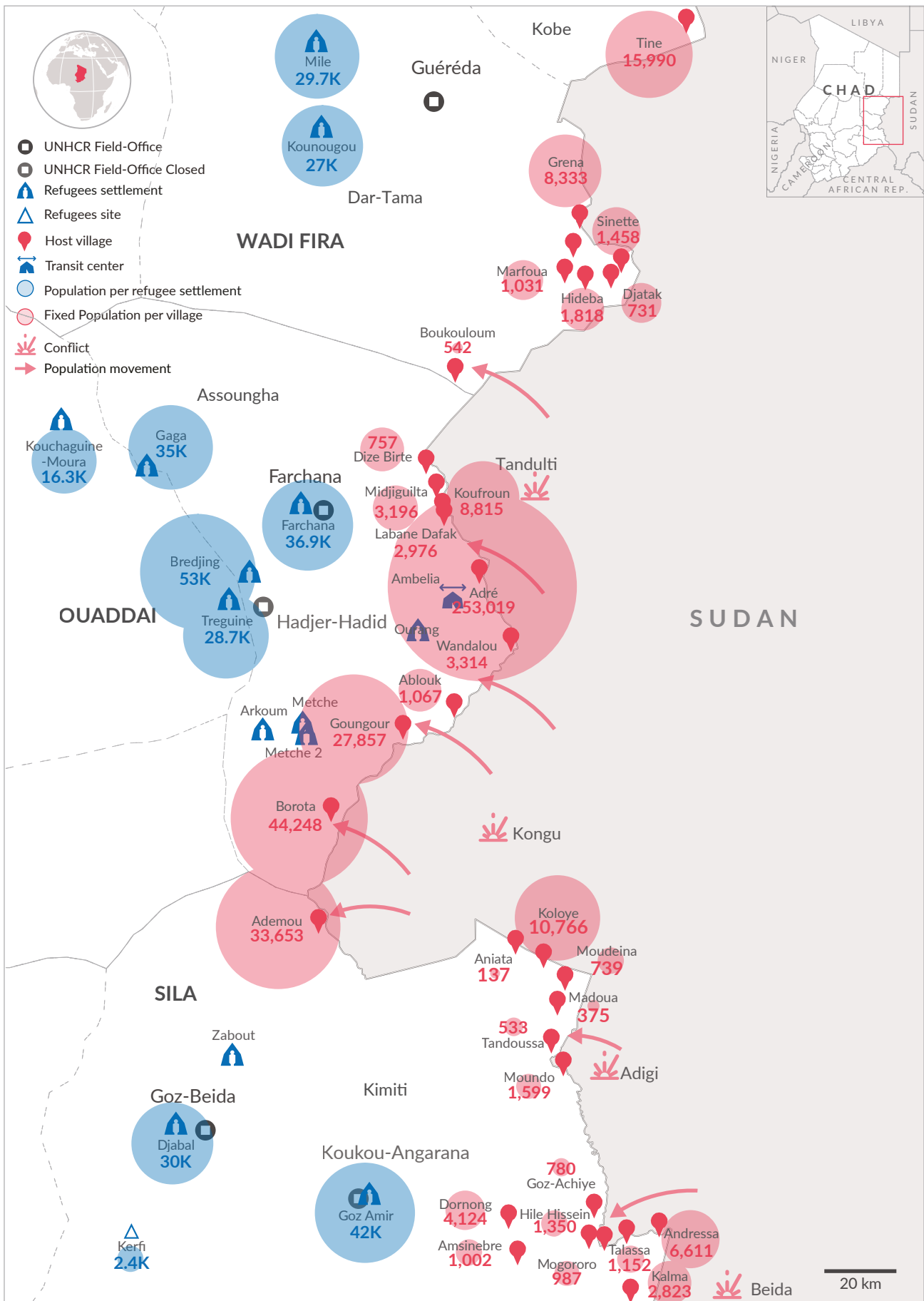
Registered persons with specific needs



77,320*** Migrants Returnees arrivals (Estimated)
93% Returnees are women & children



*Source: Estimation by the Chadian government
**Based on border monitoring, observations during first counting activities and protection activities during refugee relocation, we have reasons to believe that this figure could experience a reduction by about 20%. The completion of the relocation process and individual biometric registration, which will take place in the camps, will confirm precise refugee figures.
***Source: OIM/DTM, Chad – Sudan crisis response: Situation update 20 (06 October 2023)



The boundaries and names shown and the designations used on this map do not imply official endorsement or acceptance by the United Nations

Sources: UNHCR, CNARR, OSM

Relocation WADI FIRA
(Mile, Kounougou & Irdimi)

Village	Settlement	Individuals
Hideba	Mile	644
Boukouloum	Mile	542
Maroufa	Mile	300
Sinette	Mile	439
Grena	Mile	1,008
Hideba	Kounougou	652
Sinette	Kounougou	352
Djatak	Kounougou	314
Tiné	Irdimi	12,110
Total		16,361

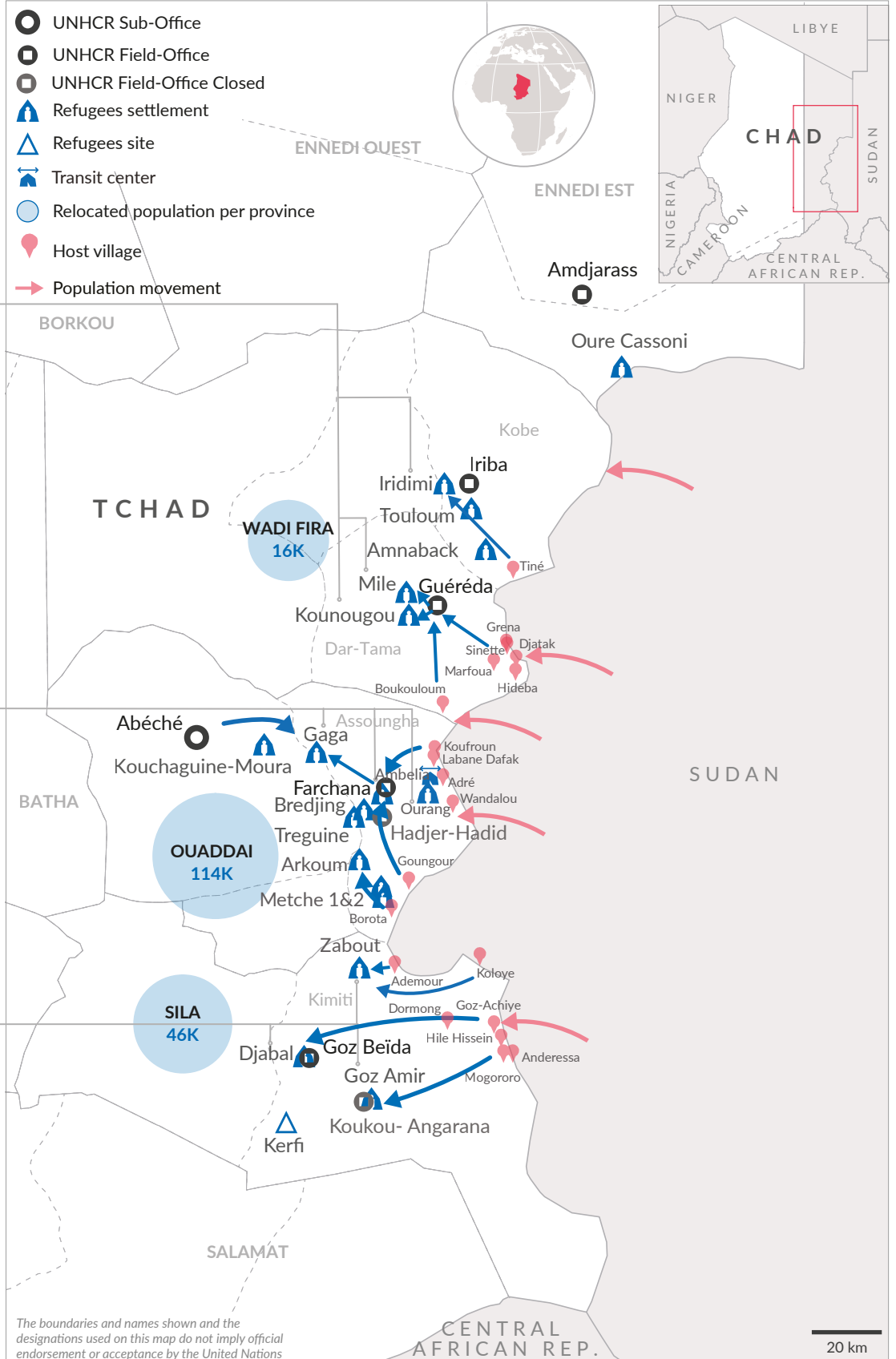
Relocation OUADDAI
(Gaga, Farchana, Arkoum, Ambelia & Ourang)

Village	Settlement	Individuals
Wandalou	Gaga	4,319
Goungour	Gaga	2,559
Adré	Gaga	143
Abeche	Gaga	400
Koufroun	Gaga	16
Labane Dafak	Farchana	3,044
Adré	Farchana	1,097
Koufroun	Farchana	362
Borota	Arkoum	16,078
Goungour	Arkoum	10,700
Adré	Metche	31,345
Adré	Ourang	44,265
Total		114,328

Relocation SILA
(Goz Amir, Djabal & Zabout)

Village	Settlement	Individuals
Anderessa	Goz Amir	1,364
Hile Hissein	Goz Amir	569
Goz Achyie	Goz Amir	500
Mogororo	Goz Amir	237
Talassa	Goz Amir	219
Anderessa	Djabal	2,370
Talassa	Djabal	1,715
Mogororo	Djabal	87
Ademour	Zabout	20,663
Koloye	Zabout	15,297
Dormong	Zabout	3,319
Total		46,340

 **176,861** Relocated Refugees to camps
 **47,654** Households
 **40%** Persons fixed have been relocated
 **227** Number of convoys



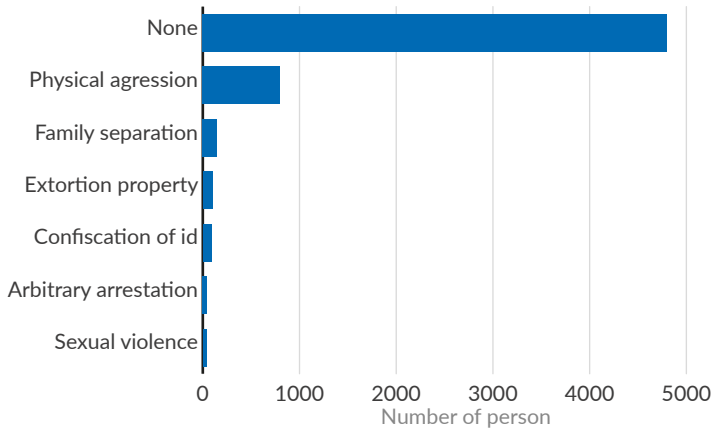
The boundaries and names shown and the designations used on this map do not imply official endorsement or acceptance by the United Nations

Sources: UNHCR, CNARR, OSM

The relocations are only carried out from host villages to the camps.

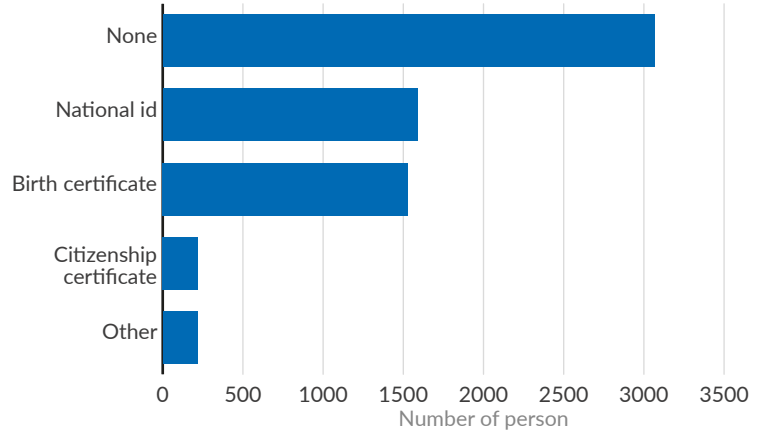
ACCESS TO TERRITORY AND ASYLUM

What types of identified dangers or threats are you exposed to?



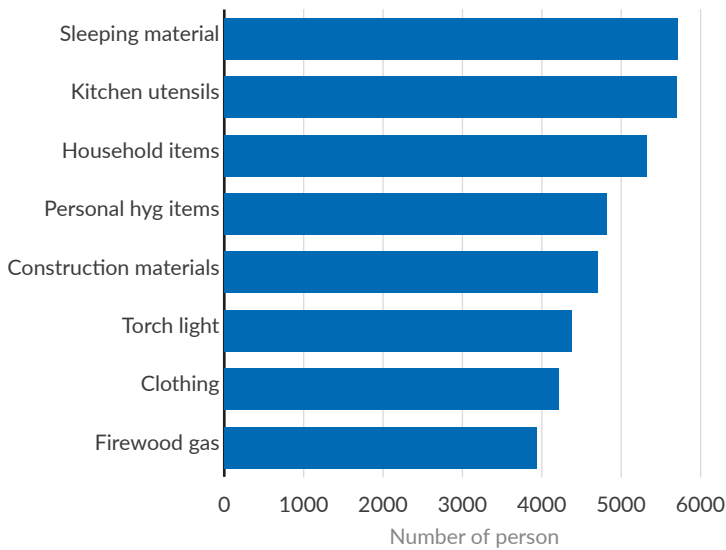
DOCUMENTATION

What type of individual document do you possess?



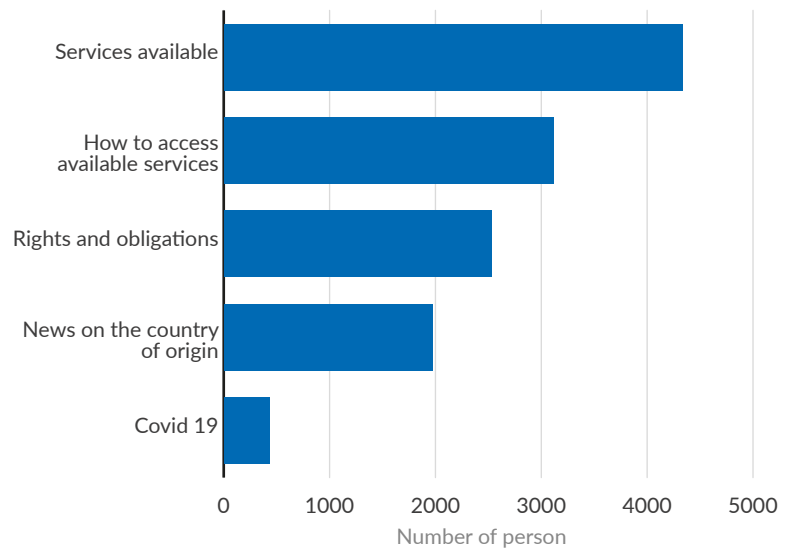
BASIC NEEDS AND ESSENTIAL SERVICES

What category of items does your family need the most?



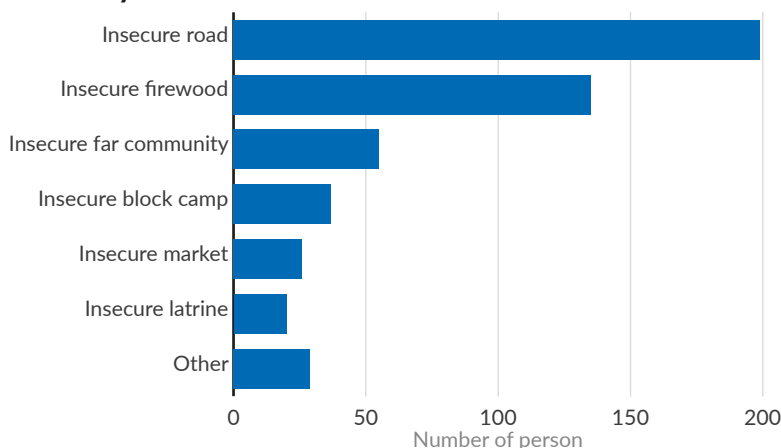
COMMUNITY ENGAGEMENT

What type of information would you like to receive from humanitarian workers and authorities?



GENDER BASED VIOLENCE

Are there specific places in the host community where you do not feel safe?



The Project 21 is a regional protection monitoring system, launched in 2020 to address gaps in data collection and analysis on protection in West and Central Africa. The inter-agency project mobilizes partners to collect a set of data using harmonized tools and a common methodology to generate joint analysis of the situation, risks, and protection trends. As of 27 September 2023, 5,853 newly arrived refugees have been interviewed in Chad for the Sudanese emergency. This represents a subset of the collected data.

Sources: UNHCR, CRT 'P21'