

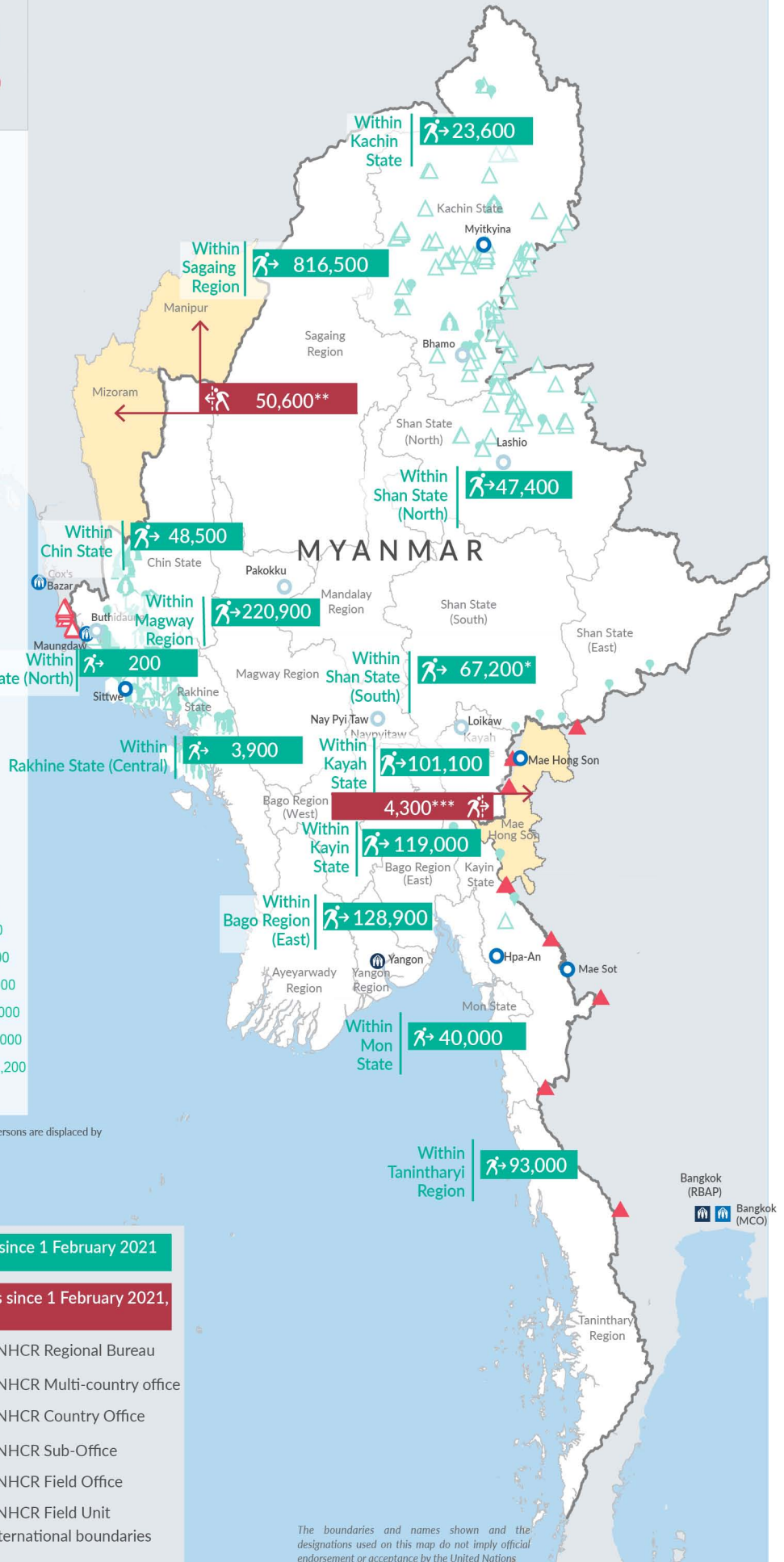
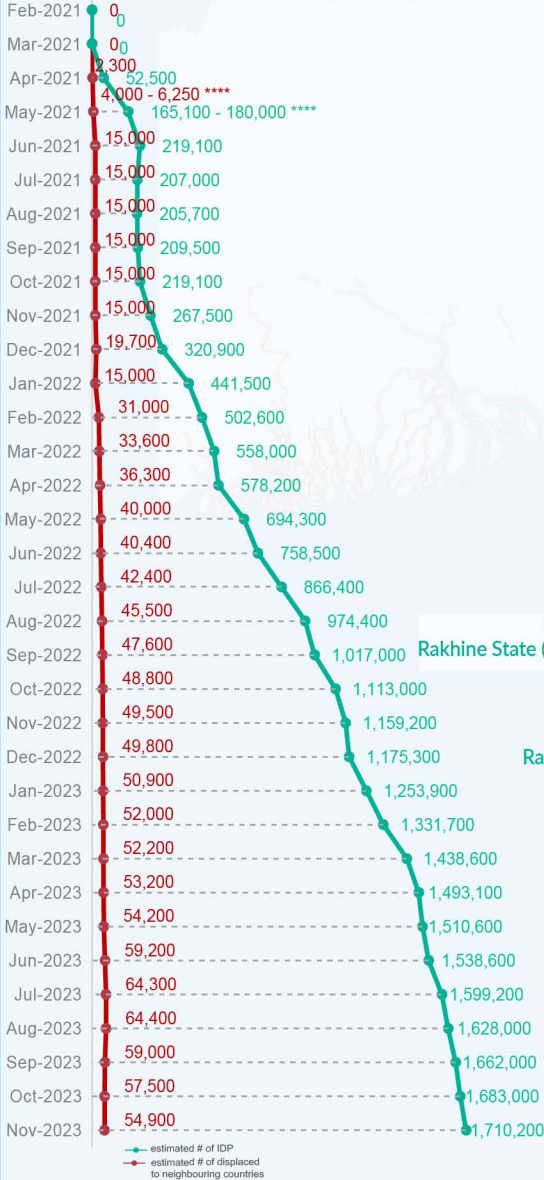
### Key figures

Estimated # of IDPs → 1,710,200

Estimated # of displaced to neighbouring countries → 54,900

Source : UN in Myanmar

### Estimated displacement figures by Month



\*60,200 persons are displaced by armed conflict in neighbouring Kayah State while 7,000 persons are displaced by inter-EAO conflict between SSPP and RCSS.

\*\*UN Estimates

\*\*\*Estimates by Tak Border Command Center (TBCC)

\*\*\*\*Range of figures was used while data collection was in progress.

Estimated internal displacement within Myanmar since 1 February 2021 (rounded to the nearest hundred)

Estimated displacement to neighbouring countries since 1 February 2021, who remain displaced (rounded to the nearest hundred)

- IDP unplanned settlement (pre-1 Feb 2021)
- IDP Center (pre-1 Feb 2021)
- IDP spontaneous location (pre-1 Feb 2021)
- IDP planned settlement (pre-1 Feb 2021)
- Temporary shelter for displaced people from Myanmar
- Refugee, planned settlement
- States/Provinces with new arrivals
- UNHCR Regional Bureau
- UNHCR Multi-country office
- UNHCR Country Office
- UNHCR Sub-Office
- UNHCR Field Office
- UNHCR Field Unit
- International boundaries

The boundaries and names shown and the designations used on this map do not imply official endorsement or acceptance by the United Nations

## Key figures


**2,016,400**

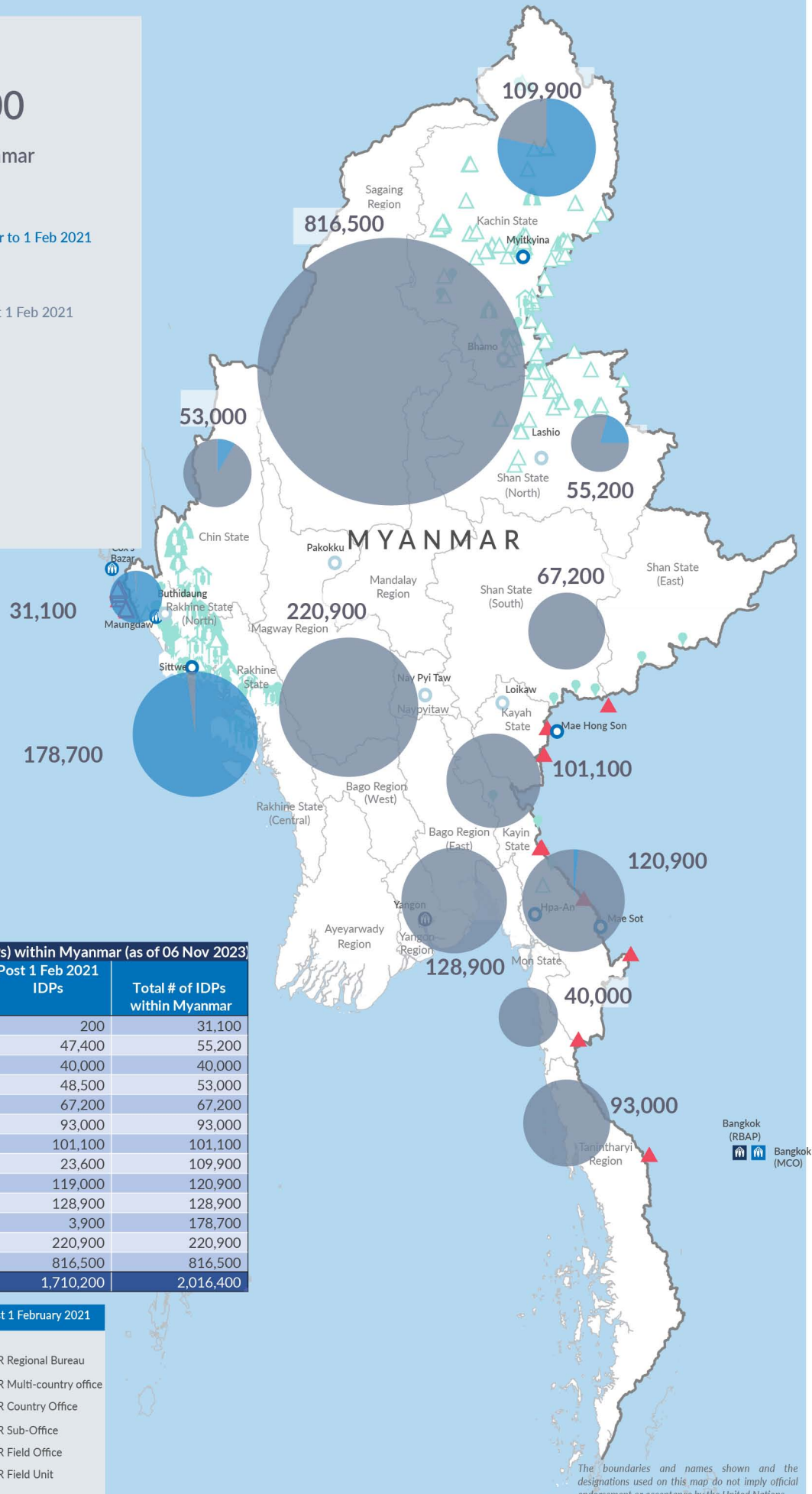
Estimated total IDPs within Myanmar


**306,200**  
 Estimated # of IDPs displaced prior to 1 Feb 2021  
 (As of 30 Jun, 2023)


**1,710,200**  
 Estimated # of IDPs displaced post 1 Feb 2021  
 (As of 06 Nov, 2023)

 Prior to 1 Feb 2021  
 Post 1 Feb 2021

Source : UN in Myanmar



Estimated total internally displaced person (IDPs) within Myanmar (as of 06 Nov 2023)

| State/Region            | Prior to 1 Feb 2021 IDPs | Post 1 Feb 2021 IDPs | Total # of IDPs within Myanmar |
|-------------------------|--------------------------|----------------------|--------------------------------|
| Rakhine State (North)   | 30,900                   | 200                  | 31,100                         |
| Shan State (North)      | 7,800                    | 47,400               | 55,200                         |
| Mon State               | -                        | 40,000               | 40,000                         |
| Chin State              | 4,500                    | 48,500               | 53,000                         |
| Shan State (South)      | -                        | 67,200               | 67,200                         |
| Tanintharyi Region      | -                        | 93,000               | 93,000                         |
| Kayah State             | -                        | 101,100              | 101,100                        |
| Kachin State            | 86,300                   | 23,600               | 109,900                        |
| Kayin State             | 1,900                    | 119,000              | 120,900                        |
| Bago Region (East)      | -                        | 128,900              | 128,900                        |
| Rakhine State (Central) | 174,800                  | 3,900                | 178,700                        |
| Magway Region           | -                        | 220,900              | 220,900                        |
| Sagaing Region          | -                        | 816,500              | 816,500                        |
| <b>Grand Total</b>      | <b>306,200</b>           | <b>1,710,200</b>     | <b>2,016,400</b>               |

Estimated internal displacement within Myanmar Pre+Post 1 February 2021 (rounded to the nearest hundred)

-  IDP unplanned settlement (pre-1 Feb 2021)
-  IDP Center (pre-1 Feb 2021)
-  IDP spontaneous location (pre-1 Feb 2021)
-  IDP planned settlement (pre-1 Feb 2021)
-  Temporary shelter for displaced people from Myanmar
-  Refugee, planned settlement
-  International boundaries
-  UNHCR Regional Bureau
-  UNHCR Multi-country office
-  UNHCR Country Office
-  UNHCR Sub-Office
-  UNHCR Field Office
-  UNHCR Field Unit

The boundaries and names shown and the designations used on this map do not imply official endorsement or acceptance by the United Nations