

## Total Arrivals from Ethiopia


**22,684**

 Individuals Registered  
 Source: UNHCR, COR  
 As of 30 November 2023

**9,034**

Households Registered

## Introduction:

In response to the influx of Ethiopian refugees into eastern Sudan, UNHCR and the Government of Sudan, in collaboration with other partners, opened Tunaydbah refugee camp in Gedaref State on 3 January 2021 to accommodate the refugees relocated from the transit centres at the border to this site. The majority of the refugees in Tunaydbah camp are from the Tigray region of Ethiopia. As of end November 2023, the camp accommodates 22,684 refugees, all of whom are biometrically registered and provided with assistance. The dashboard below presents the population profile for Tunaydbah camp.

## Persons With Specific Needs


**2,672**

Individuals


**200**

Unaccompanied/Separated Children

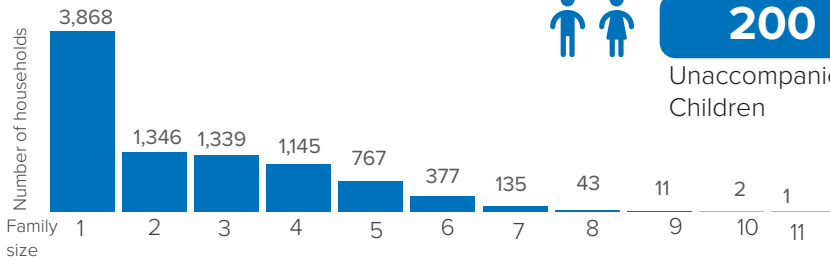
## Country of Origin

**22,632**

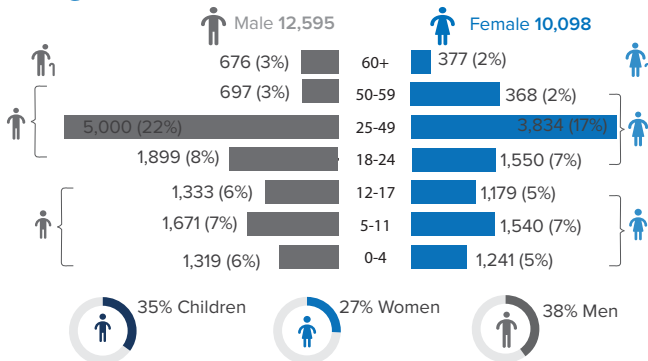
Ethiopians

**52**

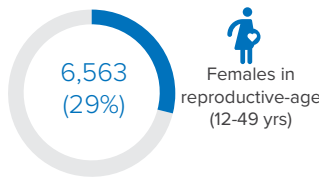
Eritreans



## Age-Gender Breakdown

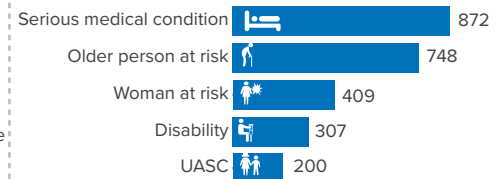


## Reproductive- Age Women/Girls

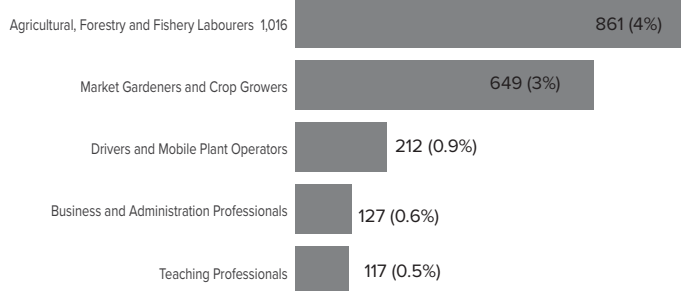


Percentages related to total population

## Specific Needs (top 5)

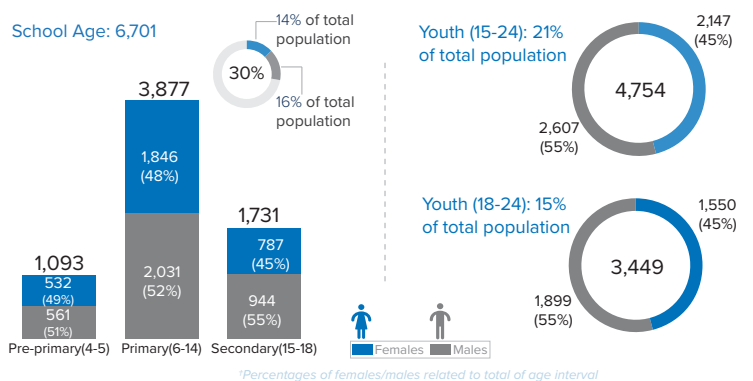

 Source: ProGres v4/Rapp  
 \*UASC: Unaccompanied or separated child

## Occupation (Top 5)



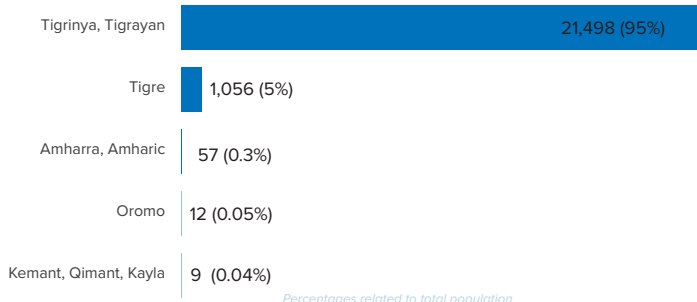
\*Occupation and skills of population aged 18 and above. Percentages related to total population and above

## School Age Children and Youth



Percentages of females/males related to total of age interval

## Ethnicity (Top 5)



## Top 5 Areas of Origin (Ethiopia Admin 3)

