

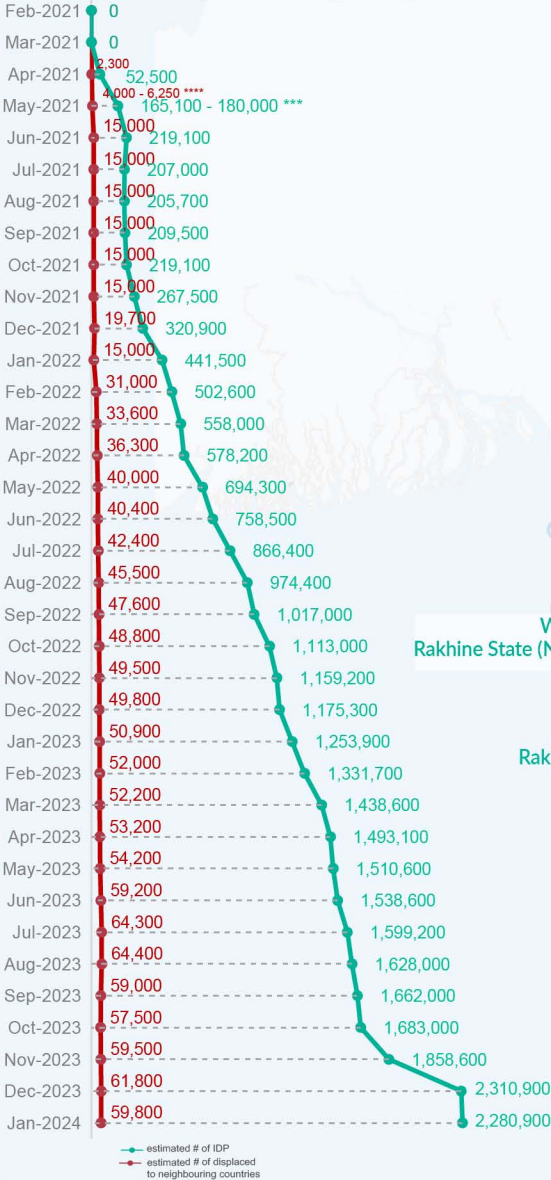
Key figures

Estimated # of IDPs → 2,280,900

Estimated # of displaced to neighbouring countries → 59,800

Source : UN in Myanmar

Estimated displacement figures by Month



*101,000 persons are displaced by armed conflict in neighbouring Kayah State while 7,000 persons are displaced by inter-EAO conflict between SSPP and RCSS.

**UN Estimates

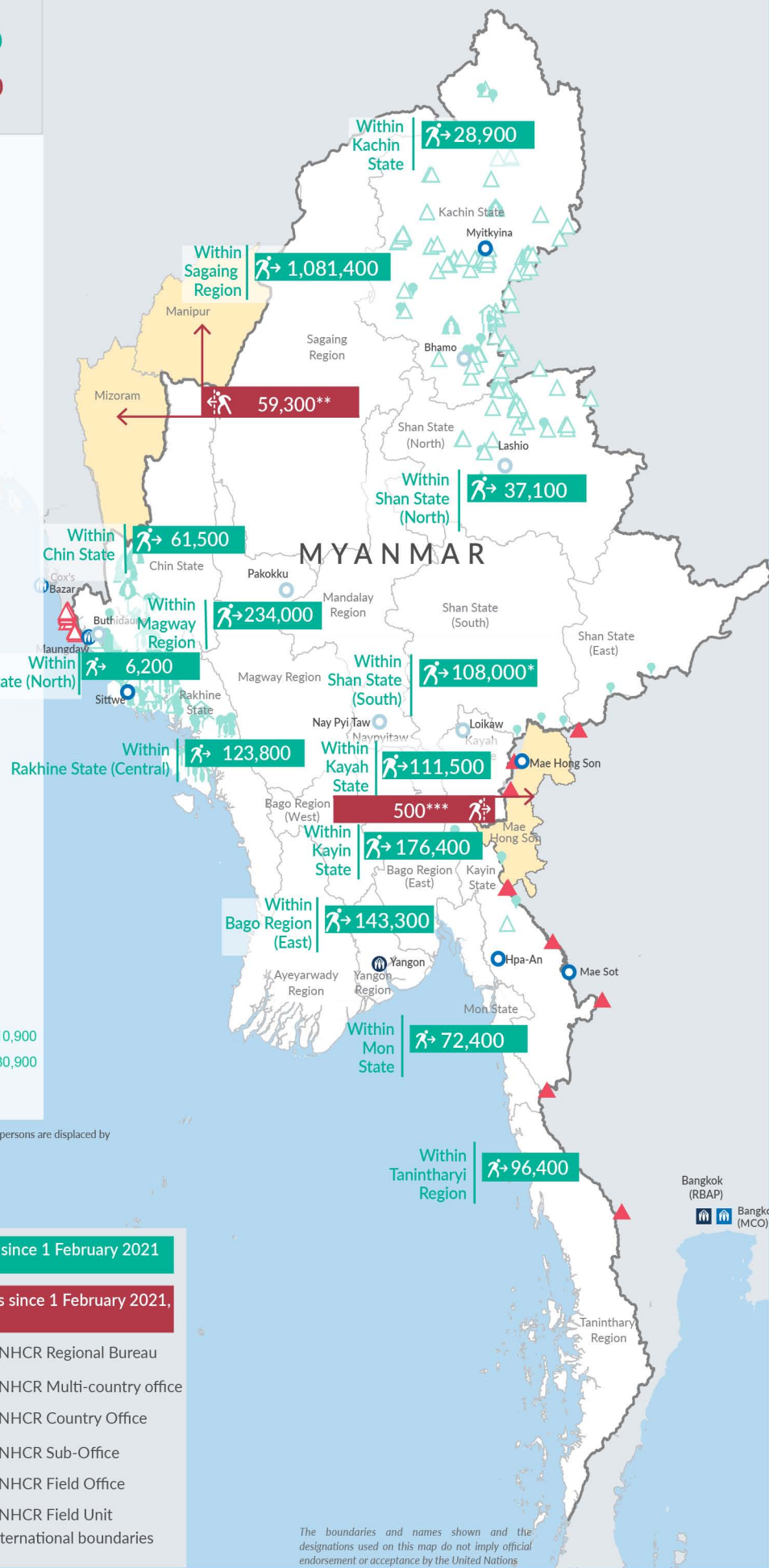
***Estimates by Tak Border Command Center (TBCC)

****Range of figures was used while data collection was in progress.

Estimated internal displacement within Myanmar since 1 February 2021 (rounded to the nearest hundred)


Estimated displacement to neighbouring countries since 1 February 2021, who remain displaced (rounded to the nearest hundred)

- IDP unplanned settlement (pre-1 Feb 2021)
- IDP Center (pre-1 Feb 2021)
- IDP spontaneous location (pre-1 Feb 2021)
- IDP planned settlement (pre-1 Feb 2021)
- Temporary shelter for displaced people from Myanmar
- Refugee, planned settlement
- States/Provinces with new arrivals
- UNHCR Regional Bureau
- UNHCR Multi-country office
- UNHCR Country Office
- UNHCR Sub-Office
- UNHCR Field Office
- UNHCR Field Unit
- International boundaries



The boundaries and names shown and the designations used on this map do not imply official endorsement or acceptance by the United Nations

Key figures


2,587,100

Estimated total IDPs within Myanmar

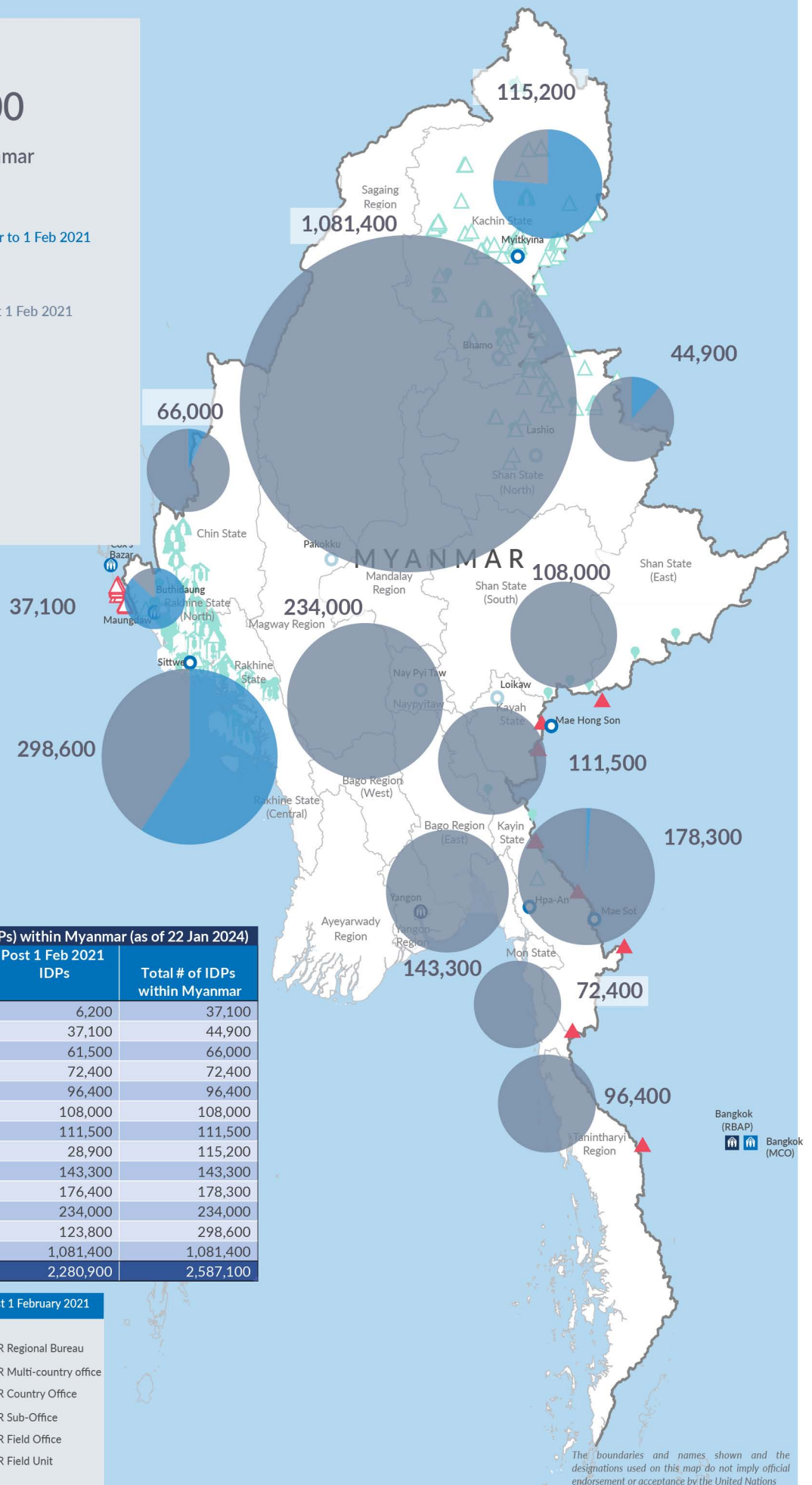

306,200
 Estimated # of IDPs displaced prior to 1 Feb 2021
 (As of 30 Jun, 2023)


2,280,900
 Estimated # of IDPs displaced post 1 Feb 2021
 (As of 22 Jan, 2024)


 Prior to 1 Feb 2021


 Post 1 Feb 2021

Source : UN in Myanmar


Estimated total internally displaced person (IDPs) within Myanmar (as of 22 Jan 2024)

State/Region	Prior to 1 Feb 2021 IDPs	Post 1 Feb 2021 IDPs	Total # of IDPs within Myanmar
Rakhine State (North)	30,900	6,200	37,100
Shan State (North)	7,800	37,100	44,900
Chin State	4,500	61,500	66,000
Mon State	-	72,400	72,400
Tanintharyi Region	-	96,400	96,400
Shan State (South)	-	108,000	108,000
Kayah State	-	111,500	111,500
Kachin State	86,300	28,900	115,200
Bago Region (East)	-	143,300	143,300
Kayin State	1,900	176,400	178,300
Magway Region	-	234,000	234,000
Rakhine State (Central)	174,800	123,800	298,600
Sagaing Region	-	1,081,400	1,081,400
Grand Total	306,200	2,280,900	2,587,100

Estimated internal displacement within Myanmar Pre+Post 1 February 2021 (rounded to the nearest hundred)

-  IDP unplanned settlement (pre-1 Feb 2021)
-  IDP Center (pre-1 Feb 2021)
-  IDP spontaneous location (pre-1 Feb 2021)
-  IDP planned settlement (pre-1 Feb 2021)
-  Temporary shelter for displaced people from Myanmar
-  Refugee, planned settlement
-  International boundaries
-  UNHCR Regional Bureau
-  UNHCR Multi-country office
-  UNHCR Country Office
-  UNHCR Sub-Office
-  UNHCR Field Office
-  UNHCR Field Unit

The boundaries and names shown and the designations used on this map do not imply official endorsement or acceptance by the United Nations