

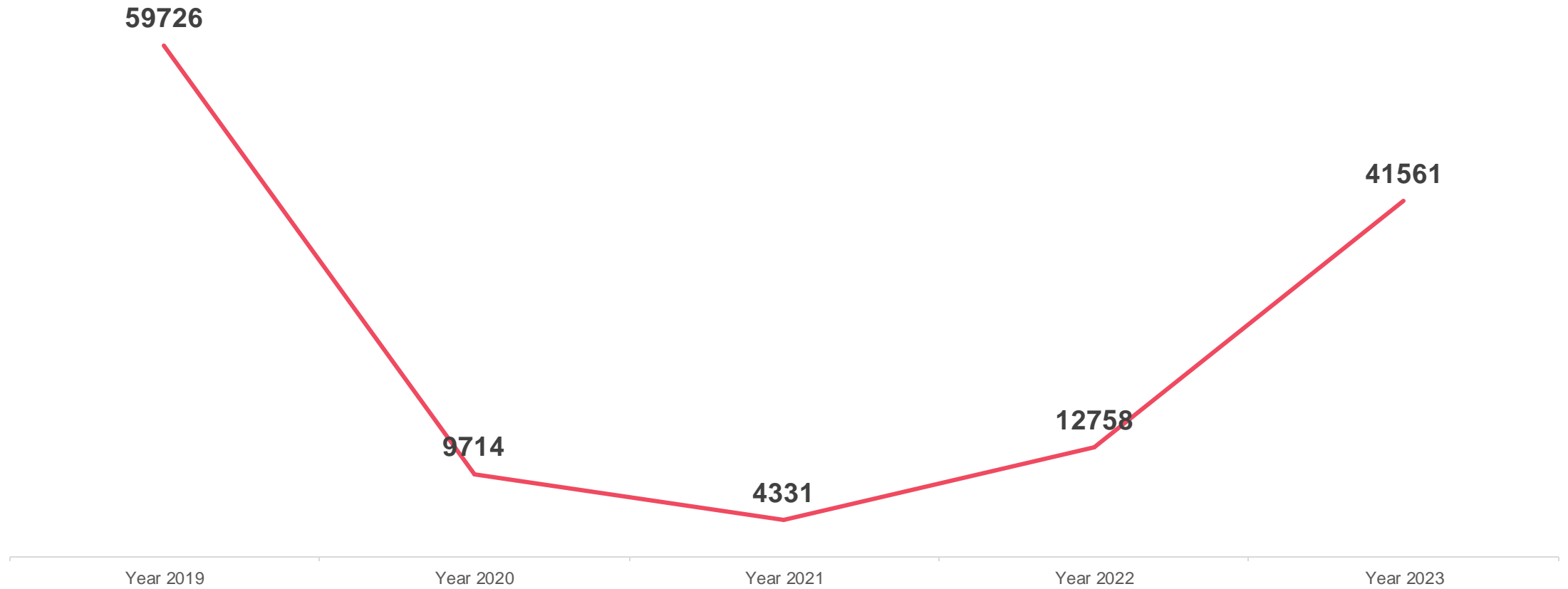
UNHCR SO Lesvos

Mytilene, 30 Jan 2024

Overview of sea arrivals

Overview of Sea Arrivals

2019 - 2023

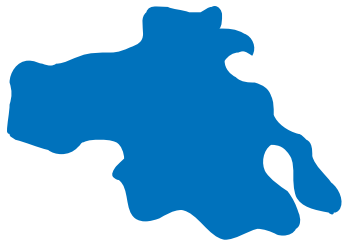


Sea Arrivals – Aegean Islands

Jan 23 - Dec 23

41.5K

Sea arrivals



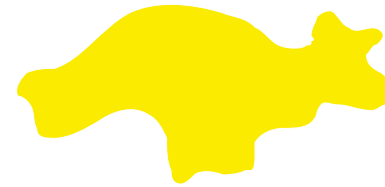
32%

Lesvos



6%

Chios



19%

Samos

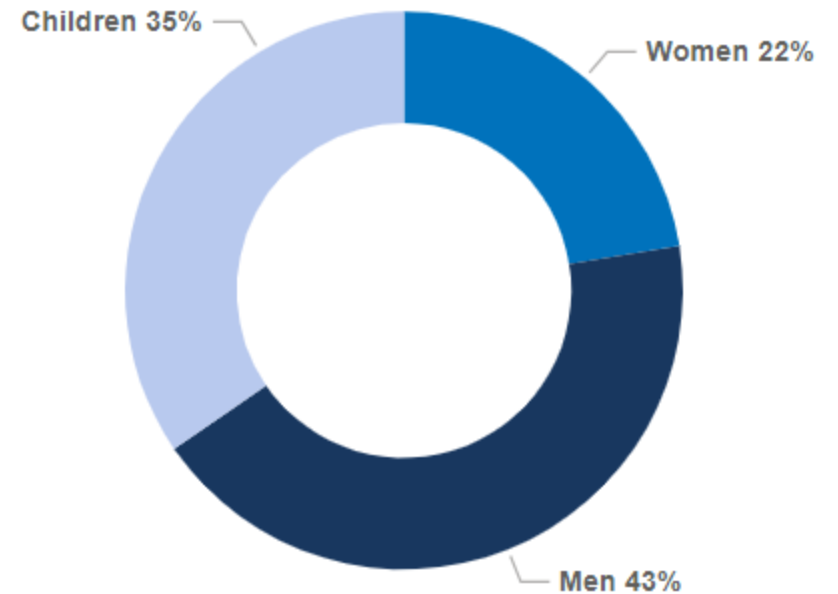
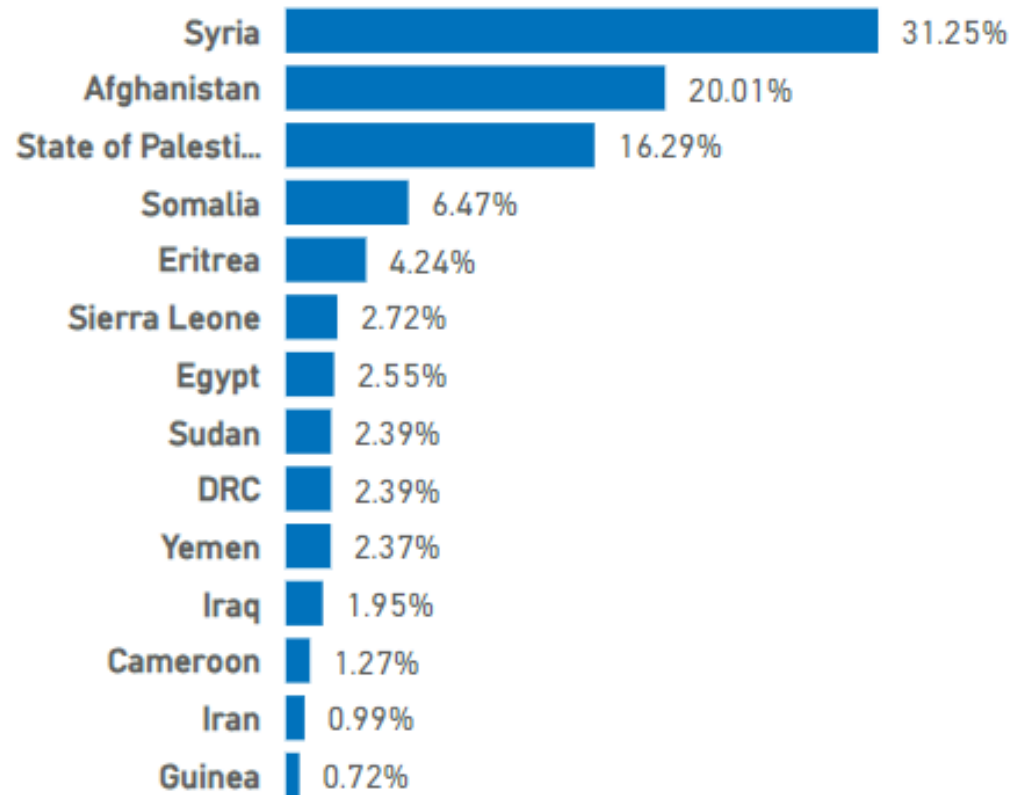


38%

Dodecanese

Gender/Age and Nationality

Jan – Dec 2023



PROTECTION GAPS

Access to territory & asylum, reception conditions

- Reports about forced irregular returns and family separation at borders
- Tensions in the CCAC - activities/response services in place
- NFI & food distribution, overcrowded conditions, shelter allocation, winterization
- Withdrawal of NGOs (access & funding) and limited activities in CCACs
- Access to information, interpretation gaps
- Mental health

Responses to persons at heightened risk

- Harmful coping mechanisms
- Limited responses (18+) and GBV, LGBTIQ+, PWD
- Limited safe spaces in CCAC and Urban areas for children, women and the LGBTIQ+ population
- Medical assessments and specialized medical services locally
- Access to Formal Education

Integration and Community Engagement

- Discontinuation of reception conditions for recognized refugees from CCACs (as per the law)
- Reports of HostComm anti-refugee rhetoric
- Seasonal employability and small business barriers
- Bureaucratic challenges and hesitation of local community
- High cost of living – limited availability of housing (Kos)
- Social assistance allowances barriers/ interpretation

ISLANDS PRIORITIES

Coordination and advocacy:

- Co-chair with RIS the Inter-Agency Coordination Meeting (IACM) and chair the Protection Working Group and the Integration Working Group, raising with the authorities and key actors critical matters that affect the rights of refugees and asylum-seekers and coordinate ways forward.
- Build the capacity of local actors in different areas of expertise.

Access to territory and to asylum:

- Promote safe access to territory and asylum. Assist new arrivals to reach the authorities.
- Systematically inform newly arrived asylum-seekers on their rights and obligations and procedures and enhance access to legal assistance.
- Support refugees to exercise their basic rights and access services.

Integration and community engagement:

- Identify skills, work experience and individual needs promoting livelihood opportunities.
- Reach out to the urban population and support existing host and refugee community networks.
- Establish -communication with communities- strategies.

Responses to persons at heightened risk:

- Monitor the situation of asylum-seekers and refugees and promote durable solutions.
- Establish a Protection Hub in the CCAC where refugees can address their protection concerns.
- Scale up efforts to protect children, prevent and respond to gender-based violence and trafficking.
- In collaboration with the authorities establish referral pathways for the timely and appropriate response to people with specific protection needs.

Thank you

For more information:

www.unhcr.org

www.unhcr.gr

data.unhcr.org