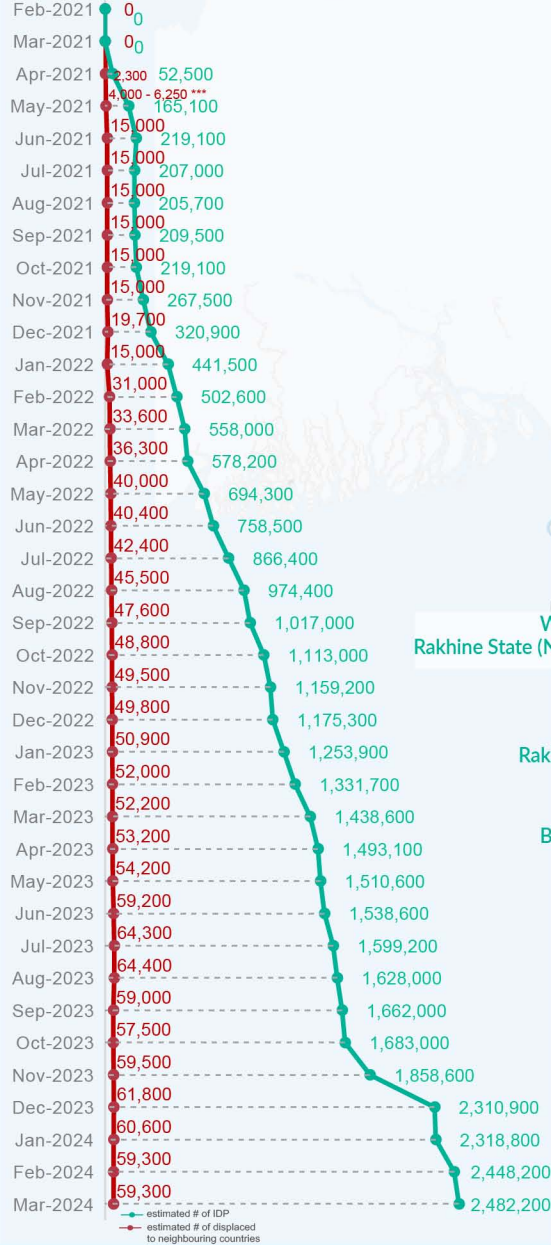


**Key figures**

Estimated # of IDPs → 2,482,200  
 Estimated # of displaced to neighbouring countries → 59,300

Source : UN in Myanmar

**Estimated displacement figures by Month**



\*113,200 persons are displaced by armed conflict in neighbouring Kayah State while 7,000 persons are displaced by inter-EAO conflict between SSPP and RCSS.

\*\*UN Estimates

\*\*\*Range of figures was used while data collection was in progress.

Estimated internal displacement within Myanmar since 1 February 2021 (rounded to the nearest hundred)

Estimated displacement to neighbouring countries since 1 February 2021, who remain displaced (rounded to the nearest hundred)

- IDP unplanned settlement (pre-1 Feb 2021)
- IDP Center (pre-1 Feb 2021)
- IDP spontaneous location (pre-1 Feb 2021)
- IDP planned settlement (pre-1 Feb 2021)
- Temporary shelter for displaced people from Myanmar
- Refugee, planned settlement
- States/Provinces with new arrivals
- UNHCR Regional Bureau
- UNHCR Multi-country office
- UNHCR Country Office
- UNHCR Sub-Office
- UNHCR Field Office
- UNHCR Field Unit
- International boundaries

The boundaries and names shown and the designations used on this map do not imply official endorsement or acceptance by the United Nations

## Key figures


**2,788,400**

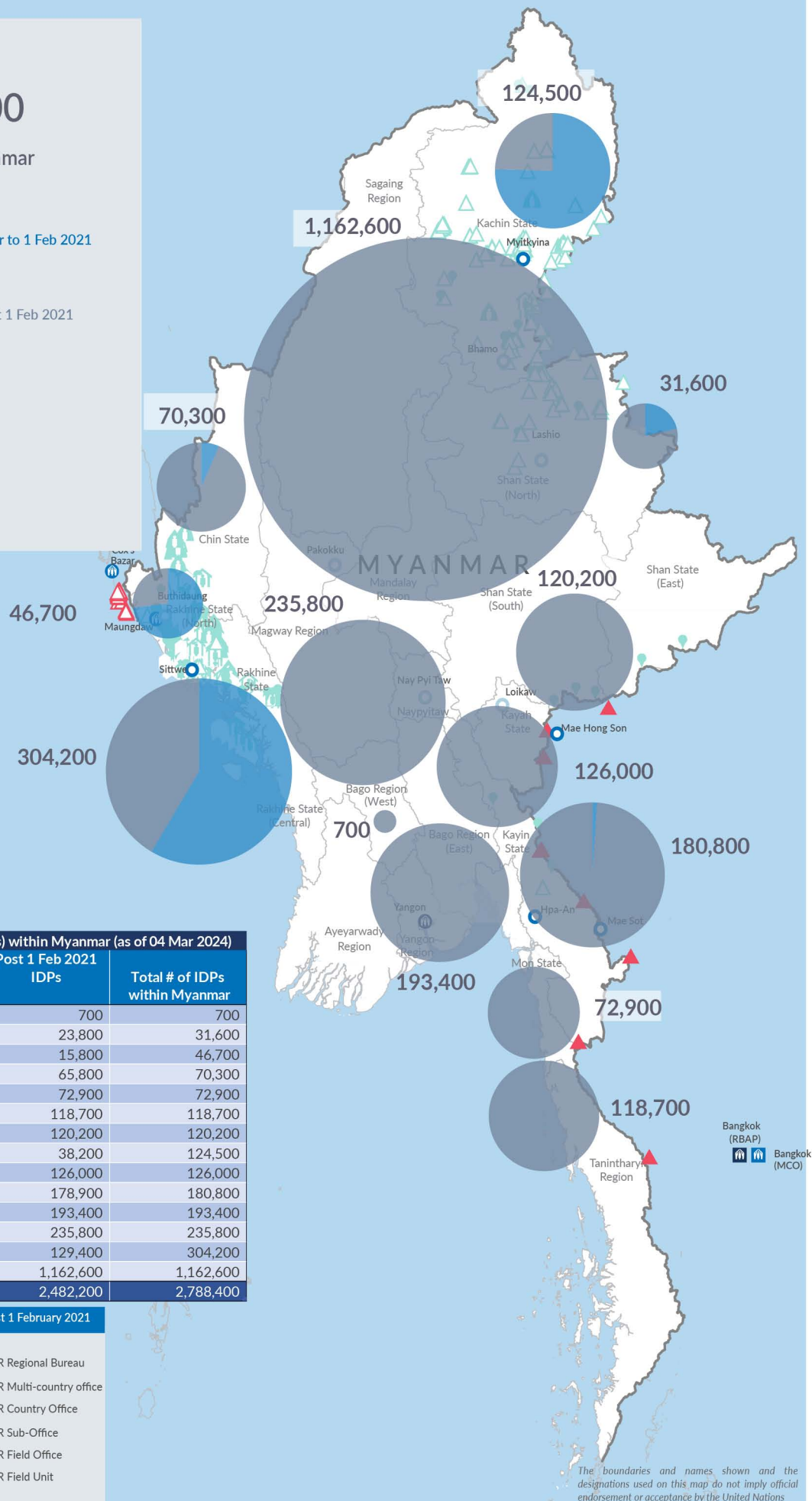
Estimated total IDPs within Myanmar


**306,200**  
 Estimated # of IDPs displaced prior to 1 Feb 2021  
(As of 30 Jun, 2023)

**2,482,200**  
 Estimated # of IDPs displaced post 1 Feb 2021  
(As of 04 Mar, 2024)
 Prior to 1 Feb 2021

 Post 1 Feb 2021

Source : UN in Myanmar



**Estimated total internally displaced person (IDPs) within Myanmar (as of 04 Mar 2024)**

State/Region	Prior to 1 Feb 2021 IDPs	Post 1 Feb 2021 IDPs	Total # of IDPs within Myanmar
Bago Region (West)	-	700	700
Shan State (North)	7,800	23,800	31,600
Rakhine State (North)	30,900	15,800	46,700
Chin State	4,500	65,800	70,300
Mon State	-	72,900	72,900
Tanintharyi Region	-	118,700	118,700
Shan State (South)	-	120,200	120,200
Kachin State	86,300	38,200	124,500
Kayah State	-	126,000	126,000
Kayin State	1,900	178,900	180,800
Bago Region (East)	-	193,400	193,400
Magway Region	-	235,800	235,800
Rakhine State (Central)	174,800	129,400	304,200
Sagaing Region	-	1,162,600	1,162,600
<b>Grand Total</b>	<b>306,200</b>	<b>2,482,200</b>	<b>2,788,400</b>

**Estimated internal displacement within Myanmar Pre+Post 1 February 2021**  
(rounded to the nearest hundred)

IDP unplanned settlement (pre-1 Feb 2021)	UNHCR Regional Bureau
IDP Center (pre-1 Feb 2021)	UNHCR Multi-country office
IDP spontaneous location (pre-1 Feb 2021)	UNHCR Country Office
IDP planned settlement (pre-1 Feb 2021)	UNHCR Sub-Office
Temporary shelter for displaced people from Myanmar	UNHCR Field Office
Refugee, planned settlement	UNHCR Field Unit
International boundaries	

The boundaries and names shown and the designations used on this map do not imply official endorsement or acceptance by the United Nations