



LEBANON
Response Plan

LRP New Partners Briefing & Onboarding

March 20, 2024

Agenda

1. Welcome New Partners!

2. Overview of the Lebanon Response Plan

- Headlines on the LRP
- Coordination of the humanitarian/stabilization response in Lebanon
- In Focus: Response to Escalation of Hostilities in South Lebanon

3. 'Mainstreaming' Across Sectors

4. 2023 End of Year Reporting

5. Information Management Tools

6. Reporting and Knowledge Management



Welcome New Partners!

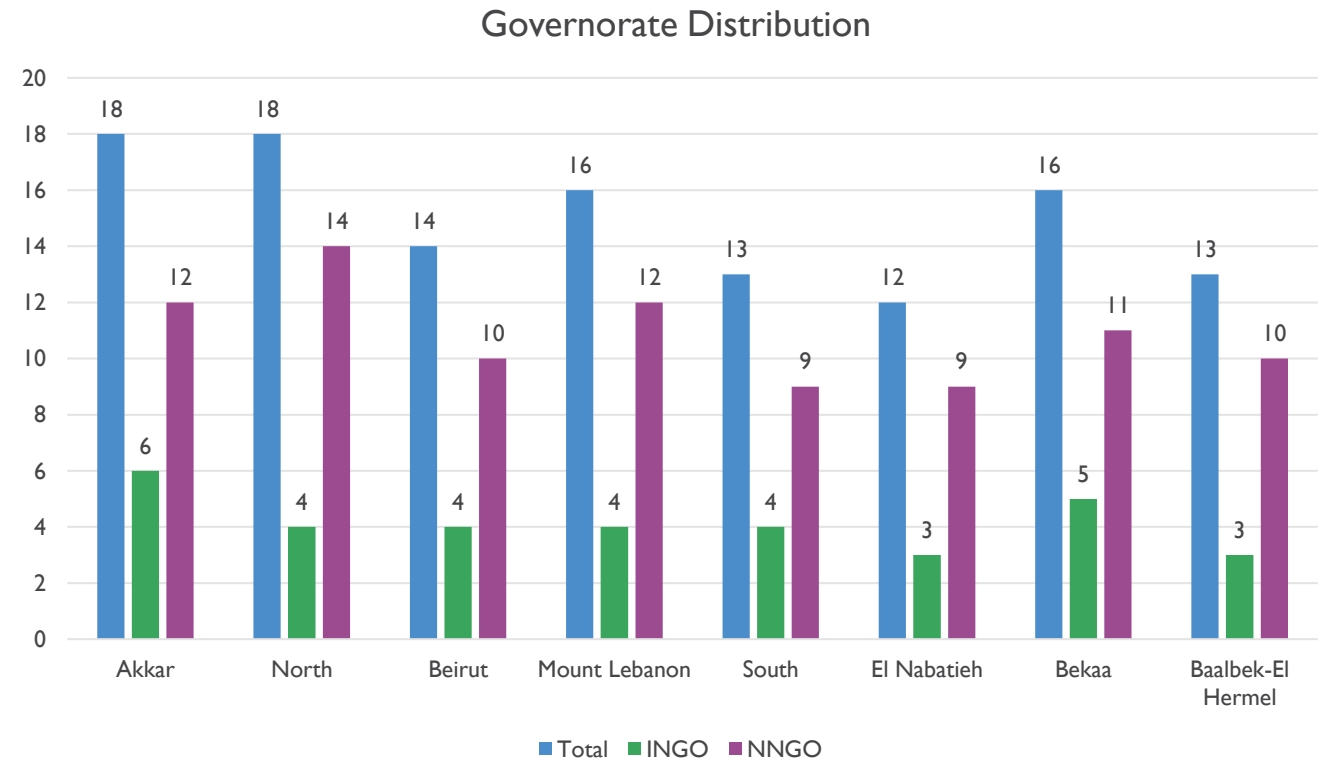
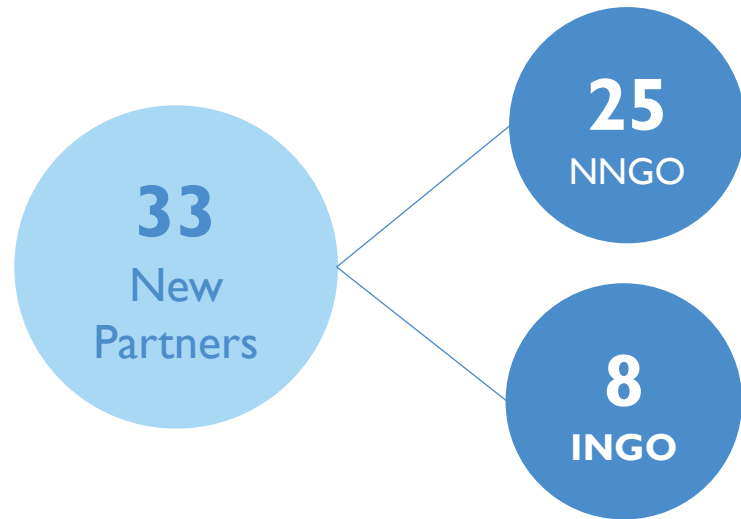
Camilla Jelbart, Senior Inter-Agency Coordinator (UNHCR)

Welcome New Partners!

- Al-Shouf Cedar Society
- Amalouna
- Armadilla Coop Onlus Middle East Coordination
- Awareness and Consolation Association
- Blue Mission
- Business Incubation Association in Tripoli
- Centro Laici Italiani per le Missioni
- Chaine de l'espoir
- Compassion Protestant Society
- Embrace
- Haqi-Awrath
- Himaya Dae Aataa (HDA) Association
- IbdAA w Najah
- Irshad & Islah
- Kayany Foundation
- Lebanese Council to Resist Violence Against Woman
- Lebanese Social Responsibility
- Lebanese Union for People with Physical Disabilities
- Life Project for Youth
- Loubnaniyoun
- Makhzoumi Foundation
- Masar
- Medglobal
- MMKN
- People in Need Slovakia
- Seenaryo
- Skoun
- Social Innovation Hub
- Swisscontact
- The Forum for the Rights of Persons with Disabilities
- Universally Specific Purposes of English and Knowledge
- Utopia
- Young Men's Christian Association

Welcome New Partners!

New Partners Disaggregation



Welcome New Partners!

Who is an LRP Partner?

Three categories:

- **Partners appealing directly under the LRP**
Partner name listed in the LRP publication, 3Ws, sector dashboards / activity reports
- **Partners implementing activities for an organization (ex: NGO sub-contracted by UN)** who are appealing under the LRP “Implementing Partners” and not listed directly in the appeal
Mentioned on 3Ws, sector dashboards / activity reports
- **Partners who participate in the sector working groups** and align their activities to the LRP (but not directly appealing)
Mentioned on 3Ws, sector dashboards / activity reports

Welcome New Partners!

What does it mean to be an LRP "Appealing Partner"?

- Widely known that you are engaging in complementarity of activities / actions and coordinated targeting of beneficiaries
- More visibility for your organization → increases opportunities to get funding
 - LRP Appeal will be published on global FTS
 - Your organization mentioned in LRP publications (report, dashboards, sector updates)
 - Letter of Confirmation (upon request) for you to submit to Donors, Ministries, etc.
- Capacity building & training opportunities (reporting, tensions, PSEA, environment, etc.)

Important Note:

Being an LRP appealing partner does not automatically secure any funding – it is still up to your organization to fundraise.



Overview of the Lebanon Response Plan

Camilla Jelbart, Senior Inter-Agency Coordinator (UNHCR)

Overview of the Lebanon Response Plan

What is the Lebanon Response Plan?

- Unified response framework for crisis-affected populations in Lebanon **co-led by the Government of Lebanon (GoL) and the United Nations (UN)**.
- Two-year **humanitarian-stabilization framework** (2024-2025), with annual planning.
- **Builds upon the previous** Lebanon Crisis Response Plan (LCRP) and Emergency Response Plan (ERP).
- Addresses the needs of **vulnerable people across populations**, including Lebanese, displaced Syrians, Palestinian Refugees from Syria (PRS), Palestine Refugees in Lebanon (PRL), migrants (and 'other' category for reporting including refugees of other nationalities).
- Includes interventions targeting **households internally displaced** due to escalation in hostilities across population groups.

Overview of the Lebanon Response Plan

The LRP Falls under the Regional Refugee and Resilience Response Plan (3RP)



Consolidates response requirements for **Egypt, Iraq, Jordan, Lebanon, and Türkiye.**

Targets **6.3 million refugees, asylum seekers, and stateless persons** (including **5.8 million Syrians**) and **6.6 million host community members.**

2024 Total Requirements



5.7 Billion

Overview of the Lebanon Response Plan

Strategic Objectives



Provide immediate humanitarian assistance to vulnerable populations to ensure critical needs are met.



Ensure protection of the vulnerable populations.



Support service provision through national systems including national rapid response capacity



Reinforce Lebanon's economic, social, and environmental stability.

Overview of the Lebanon Response Plan

At a Glance



5.7M
Total
Population

2024 Planning Figures



3.7M
People in Need

2.05M Vulnerable Lebanese
149,000 PRL
23,026 PRS
1.36M Displaced Syrians
101,318 Migrants



3.1M
People Targeted

1.5M Vulnerable Lebanese
145,000 PRL
23,026 PRS
1.3M Displaced Syrians
80,551 Migrants



151 Appealing UN and NGO partners

45



Basic Assistance

66



Education

68



Food Security & Agriculture

58



Health

85



Livelihoods

19



Nutrition

75



Protection

24



Shelter

67



Social Stability

36



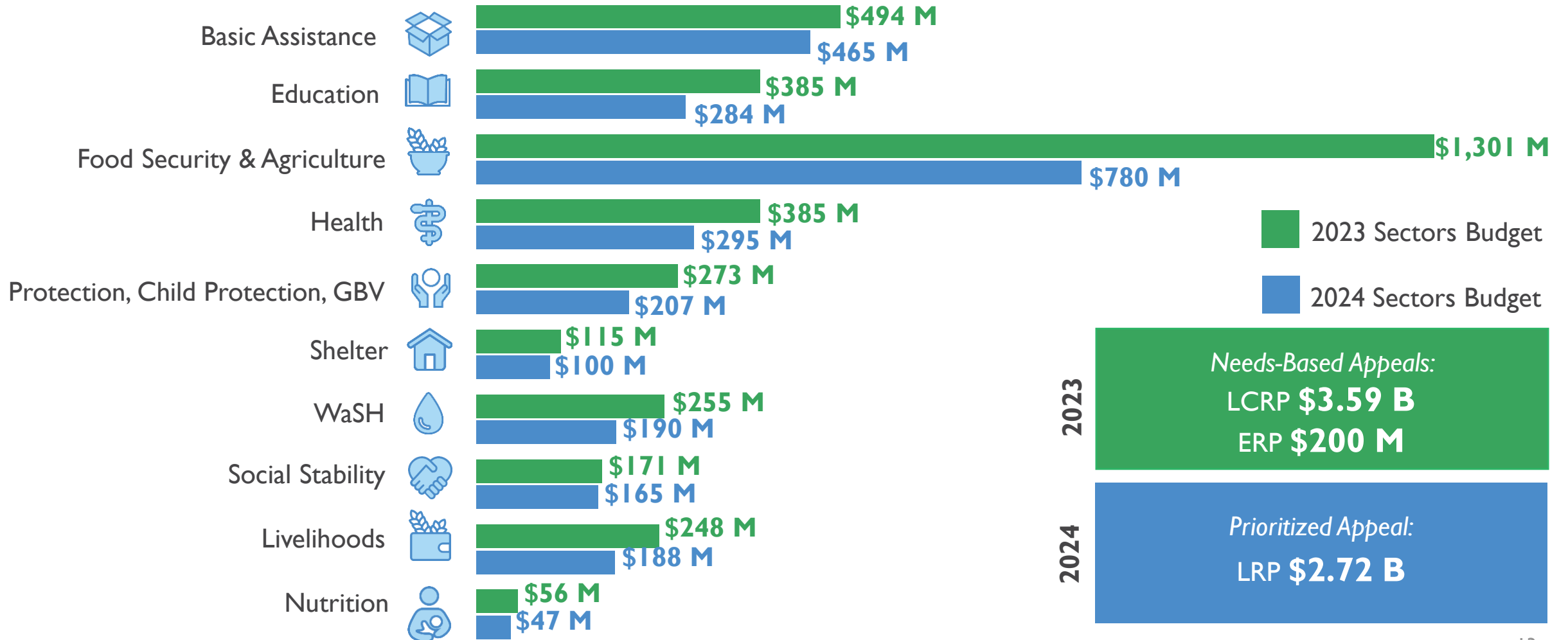
WaSH



\$2.71B
2024 Appeal

Overview of the Lebanon Response Plan

2024 vs. 2023 Sector Budgets



Overview of the Lebanon Response Plan

LRP Sector Budgets vs. Partner Appeal

Sectors	2023 LCRP Sectors Budget	2023 ERP Sectors Budget	2024 LRP Sectors Budget	Amount for 3 months South escalation response from total LRP budget	2024 LRP Partners Appeal	# Appealing partners
Basic Assistance	\$494 M		\$465 M	\$6.3 M	\$704 M	45
Education	\$363 M	\$22 M	\$284 M	\$5.1 M	\$388 M	66
Food Security and Agriculture	\$1301 M		\$780 M	\$20 M	\$550 M	68
Health	\$318 M	\$67 M	\$295 M	\$12.6 M	\$281 M	58
Protection, Child Protection, GBV	\$235 M	\$38 M	\$207 M	\$8.4 M	\$207 M	75
Shelter	\$115 M		\$100 M	\$3.8 M	\$72 M	24
WaSH	\$206 M	\$48 M	\$190 M	\$11 M	\$152 M	36
Social Stability	\$171 M		\$165 M	\$2.4 M	\$238 M	67
Livelihoods	\$248 M		\$188 M		\$220 M	85
Nutrition	\$45 M	\$11 M	\$47 M	\$2.9 M	\$9.2 M	19
Energy*	\$99 M					
Migrants*		\$12 M				
Total	\$3.59 Billion	\$200 Million	\$2.72 Billion	\$72.4 Million	\$2.82 Billion	151

*Mainstreamed in 2024

Overview of the Lebanon Response Plan

Guiding Commitments & Governing Principles

- Sustainable Development Goals (SDGs)
- Humanitarian-Development-Peace Nexus (HDPN)
- The Global Compact on Refugees (GCR)
- Accountability to Affected Populations (AAP)
- Prevention of Sexual Exploitation and Abuse (PSEA)
- Gender & GBV Risk Mitigation
- Environment
- Prioritization
- Collaborative Planning for Multiple Years
- Efficient Implementation and Coordination
- Area-based Coordination
- Timely Information Sharing and Tracking
- Conflict Sensitive Approach

Overview of the Lebanon Response Plan

Planning Assumptions

Contextual assumptions that underpin the planning for 2024 include the below points. Each sector strategy also analyzes planning assumptions, risks, and mitigating measures within their respective theories of change.

- The **socio-economic crisis** in Lebanon will continue throughout 2024 to impact individuals/households, communities and institutions (following stabilization of exchange rate, increase in USD prices recorded eg. for rent).
- **Critical infrastructure and basic services** are at risk of further deterioration without sustained support & medium-term solutions, contributing to higher risk of ‘emergency situations’ e.g. weather-related/public health as well as **widespread unmet needs**. Intra-communal tensions expected to be further exacerbated as a result of economic pressure and lack of access to services.
- Pending a resolution of the **crisis in Syria**, the impact on Lebanon will continue.
- Inter-communal **tensions** and public **pressure for the return** of displaced Syrians are likely to continue, inhibiting **protection space**.
- The **war in Gaza** is expected to have a continued impact on the hostilities in the South of Lebanon with continued hostilities and internal displacement. *[3 month planning figure: 140,000 displaced/60,000 in conflict-affected areas]*
- Reduction in **donor funding** to Lebanon, given the multiple crises worldwide and competing global financial priorities.
- Given the range of drivers to ongoing **individual and institutional vulnerability**, it is imperative that multi-year thinking and planning is facilitated and strengthened looking ahead to beyond 2025 (including through linkages with UNSDCF).

Overview of the Lebanon Response Plan

LRP Timeline and Progress Update

- ✓ **Needs analysis** workshops at sector and cross-sectoral level to underpin sound situation analysis.
- ✓ **Sector consultations** (core groups and working groups) involving national and sub-national partners to develop **draft sector strategies**.
- ✓ Review of sector strategies to enhance mainstreaming (protection, gender/GBV, PSEA, environment, conflict sensitivity, energy) and cross-sectoral collaboration to promote **harmonization across sectors** (prioritization, integration of the South escalation response).
- ✓ Memo on LRP with concept note shared by **Prime Minister to all Ministers**.
- ✓ **Updated sector strategies** to be shared with inter-sector, WGs, sector leads (followed by high-level meetings with sector leads for some sectors).
- ✓ **Inter-sector PIN calculation** (workshop with national-level sector coordination teams).
- ✓ **Partner Appeal Expression of Interest** - with *draft strategies and logframes* circulated to partners, and available [here](#).
- ✓ **Partners' Training** on LRP Sector Reporting.
- ✓ Launch event at 3RP level with donors on 6 March.
- ✓ **Finalization steps for sector strategies:** gender with age marker; final logframe following partner appeal analysis.
- ✓ **Initiation of Inter-Sector Coordination Group** and related inter-sector work-planning, including on **2024 needs assessments & analysis** and **M&E**.
- ✓ Convening **Steering Committee - three step approach:**
 - Inaugural Steering Committee meeting to confirm concept and endorse governance ToRs - **to be accompanied by LRP 'launch' communications**.
 - Preparatory meeting to discuss language in the **LRP Chapeau** (deputies/senior advisor level across GoL, UN, NGOs, donors).
 - Steering Committee meeting to **endorse** the LRP document.
- ✓ Workshop on **coordination at the sub-national level**.



Coordination of the Lebanon Response Plan

Stephanie Laba, Inter-Agency Coordination Officer (UNHCR)

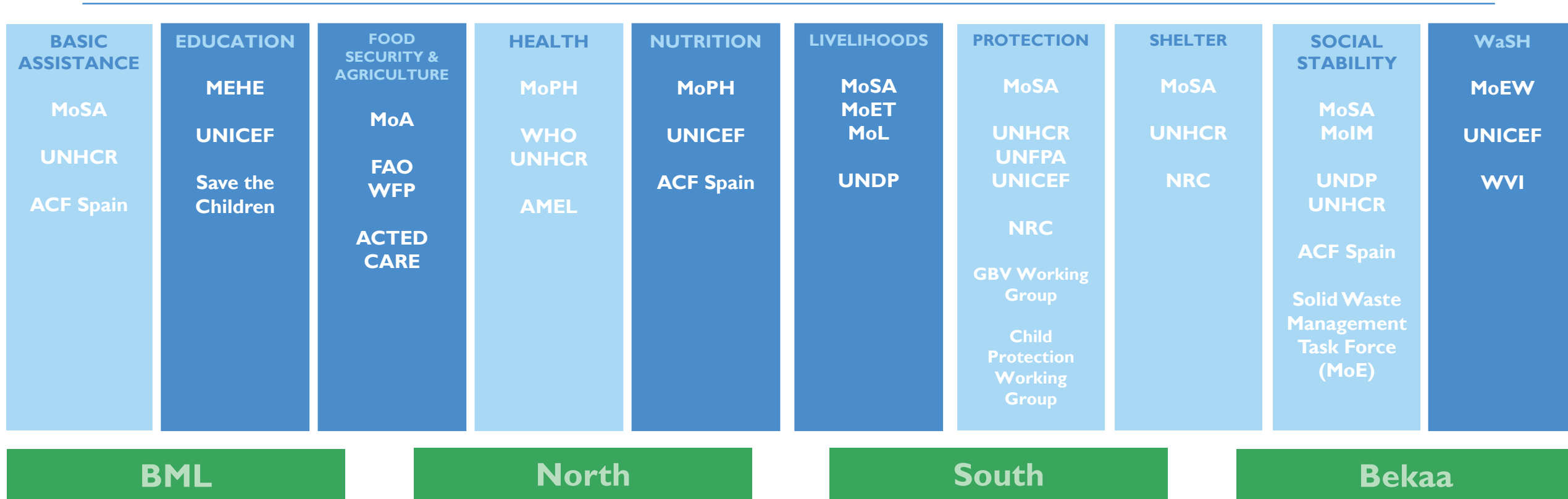
Coordination of the Lebanon Response Plan

Governance and Coordination Architecture: STILL TO BE ENDORSED BY STEERING CTTE




Coordination of the Lebanon Response Plan

Sector Coordination Structure



Coordination of the Lebanon Response Plan

Coordination Meetings Schedule

 LRP Sectoral Coordination & Meeting Schedule 2024													
Inter-Sector Meetings					Information Management WG								
National ISEG Online 1 st Friday 10:00 LRP Partners meeting Online 2 nd Friday at 10:00		North IS Tripoli/Qobayat 2 nd Tuesday 10:00		Bekaa – Baalbek El Hermel IS UNHCR Zahle 1 st Thursday		South IS UNHCR Tyre Last Friday 10:30-12:00		Beirut – Mt. Lebanon IS UNHCR BML 3 rd Tuesday 10:00			National UNHCR Last Wednesday of the month 10:00 (Every 2 months, starting February)		
Sector Working Groups													
	Health	Nutrition	Food Safety & Security	Livelihoods	Protection	CP Working Group	GBV Working Group	Social Stability	Education	Basic Assistance	Shelter	WaSH	
NATIONAL	NHSWG meeting Online Last Friday of the Month 9:00-11:00 Core Group Meeting (Quarterly)	Nutrition meeting Online 4 th Thursday of every month 10:00-11:15	FSS WG meeting WFP 2 nd Tuesday 9:30-11:30 Core Group WFP 1 st Thursday 9-10	LH WG meeting UNDP / MoSA 2 nd Thursday (bi-monthly) 10-12 Core Group Last Thursday 1:00-2:00	PWG meeting UNHCR 3 rd Wednesday 2:00 Core Group UNHCR 2 nd Friday 13:00	CP WG meeting UNICEF 3 rd Thursday 10:00 Core Group Ad-hoc meetings based on needs	GBV WG meeting UNHCR & Co-chaired by UNFPA 3 rd Wednesday 10:00-12:00 Core Group 2 nd Wednesday 10-11:30	SoSt WG meeting Online or In person at UNDP Last Tuesday 11:00-12:30 Core Group In person at UNDP 2 nd Tuesday 11:00 – 12:30	EDU WG meeting Location TBD 4 th Thursday 12:00 Core Group 1 st & 3 rd Tuesday 11:00	BAWG meeting UNHCR / MoSA 4 th Thursday 10:00 Core Group 3 rd Thursday 12:00	Shelter WG meeting MoSA Last Friday 11:00 Core Group 3 rd Friday 14:00	WASH WG meeting MoEW 1 st Thursday 10:00	

Coordination of the Lebanon Response Plan

Coordination Meetings Schedule

BEIRUT - MT .LEB	UNHCR BML FO 3rd Thursday of the month 10:00		WFP (every 2 months) Last Thursday 10-12	UNDP 1st Thursday 10- 11	UNHCR Last Tuesday 10:00	UNICEF 4th Wednesday 13:00	UNHCR 4th Wednesday 10:00-12:00	Online or in person with venue TBC 1st Thursday (monthly) 11:15-12:15	UNICEF (every 2 months) 4th Wednesday 10:00	UNHCR Ad-hoc meetings based on needs	UNHCR 1st Tuesday 10:00	UNICEF Beirut 2nd Thursday 10:00
BEKAA - BAALBECK- EL HERMEL	UNHCR Zahle FO 4th Thursday of the month 11:00		WFP (every 2 months) Last Wednesday 11-1	UNHCR Zahle 2nd Wednesday 11-12	UNHCR 2nd Tuesday 11:30	UNHCR 4th Tuesday 10:00	UNHCR 2nd Tuesday 10:00-12:00	Online monthly, and in person quarterly at UNHCR or UNDP Zahleh office 2nd Wednesday (monthly) 10:00-11:00	UNHCR Last Tuesday 10:00	UNHCR 4th Friday 10:00	UNHCR 3rd Wednesday 10:00	UNICEF Zahle 2nd Wednesday 10:00
NORTH	UNHCR Tripoli FO 2nd Thursday 11:00	Last Wednesday of every month 11:00-12:00	WFP (every 2 months) Last Tuesday 11-1	UNDP Tripoli 1st Tuesday 10:30-11:30	UNHCR Tripoli or UNHCR Qobayat 2nd Wednesday 10:00	Rotate between UNHCR Tripoli & Qobayat 3rd Tuesday 10:00	Rotate between UNHCR Tripoli & Qobayat Last Thursday 10:00-12:00	In person at UNDP Tripoli office 1st Tuesday (monthly) 11:45 – 12:45	Location TBD Last Tuesday 11:00	Rotate between UNHCR Tripoli & Qobayat 1st Wednesday 10:30	Rotate between UNHCR Tripoli & Qobayat 1st Thursday 10:30	UNICEF Tripoli Last Thursday 10:30
SOUTH - EL NABATIEH	UNHCR Tyre FO 1st Thursday 10:00		WFP (every 2 months) Last Thursday 10-12	UNDP Last Wednesday 12-1	UNHCR Last Thursday 10:30	UNICEF 2nd Thursday 12:30 (every 2 months)	UNHCR 2nd Thursday 10:00-11:30	Online or in person at UNDP South Office Last Wednesday (monthly) 11:00 – 12:00	UNICEF (every 2 months) 3rd Thursday 10:00	UNHCR Tyre 1st Wednesday	UNHCR 1st Wednesday 10:30	UNICEF Tyre 1st Tuesday 10:00

Sexual and Reproductive Health Sub-Working Group Meeting Last Wednesday of the month (Once every 2 months) UNFPA

Nutrition evidence working group and IYCF committee meeting Ad hoc basis

MHPSS TF meeting

Online Tuesday March 21 2:00

Overview of the Lebanon Response Plan

Why Coordination?

Coordination is a mechanism that ensures:

- **Integrated response management** through a dedicated team.
- **Effectiveness** and **transparency** of the response.
- Oversight of the overall **progress** of the response.
- **Cohesion** and **linkages** between sectors, which facilitates collaboration and prevents duplication.
- **Communication** and **dissemination** of timely and accurate information to partners.
- **Development** and **establishment** of plans, guidelines, and strategies while informing the planning and supporting sector coordinators.

Coordination of the Lebanon Response Plan

National and Subnational Coordination

- National LRP Partner Meetings.
- Inter-Sector Coordination Group Meetings.
- Sector Working Groups vs. Core Groups (processes, elections, etc.).
- Subnational Meetings.



Escalation of Hostilities in South Lebanon

Helena Mazarro, Deputy Head of Office (OCHA)

Escalation of Hostilities in South Lebanon

Planned Inter-Sector Response to the South Escalation



Up to 140,000 Internally Displaced Persons (IDPs)
+ 60,000 remained in the areas of conflict



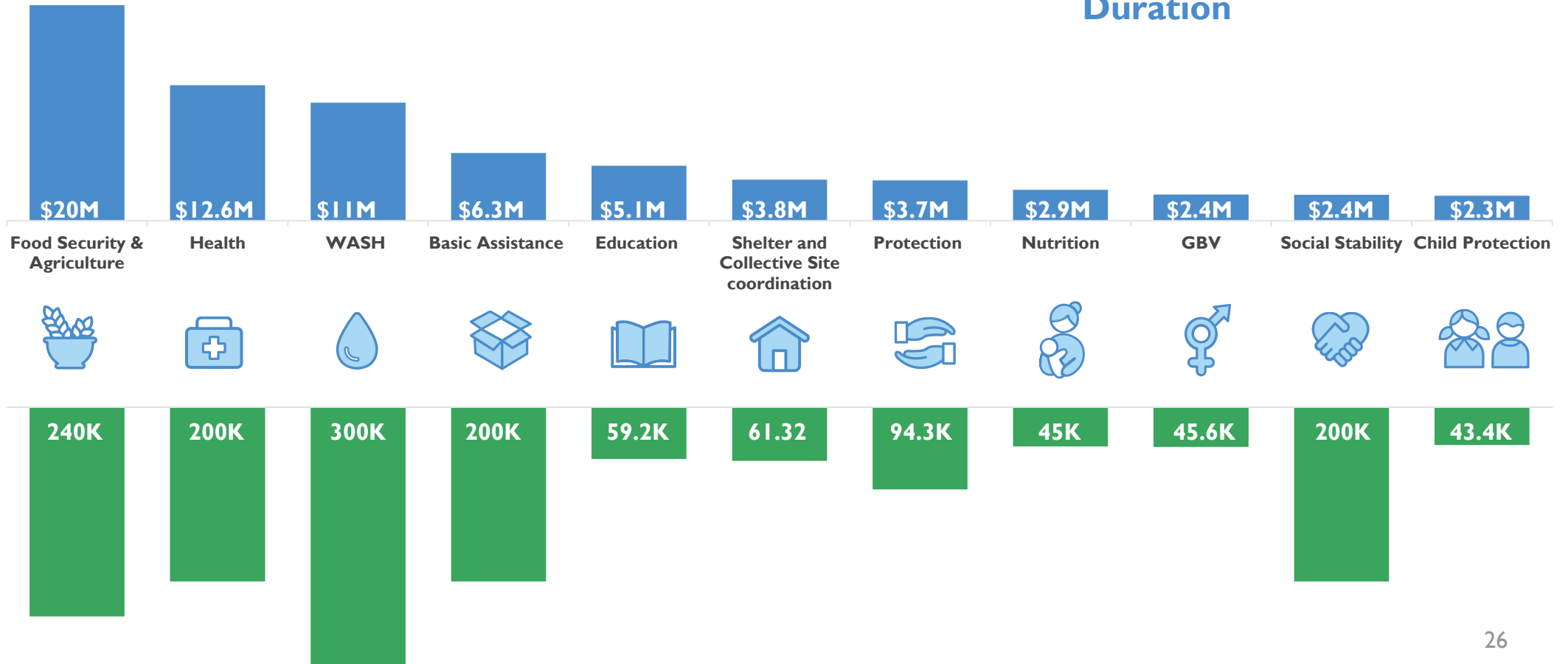
3 Months

Duration

Total Requirements:



\$72.4M



People Targeted

Escalation of Hostilities in South Lebanon

Situation Overview



Displaced*
91,288

52% females
*according to IOM DTM



Killed*
199

at least 45 civilians
*according to MoPH



Wounded*
941

*according to MoPH



Health Workers

7 Killed



Collective Shelters

18

accommodating 1,089 IDPs



Health Facilities

9

PHCs closed in Marjaayoun and Bent Jbeil



Public Schools

50

partially or fully closed in border villages



Water Facilities

8

damaged, impacting +100K residents



Agricultural Land*

462 Hectares

burned
*according to MoE



Farm Animals*

300K

poultry, livestock and beehives destroyed

*according to MoA

Escalation of Hostilities in South Lebanon

Key Documents

At a Glance: Bi-Weekly Basis by OCHA

[At a Glance as of 21 Feb 2024](#)

Lebanon: At a Glance
Escalation of hostilities in South Lebanon
as of 21 February 2024

The Humanitarian Country Team in Lebanon, led by the Humanitarian Coordinator and supplementing national efforts, continues to increase its readiness and response to the humanitarian needs of the people affected by the increase in hostilities along the Blue Line in the south of Lebanon.

SITUATION OVERVIEW

- Displaced*** 89,817 (2% females) according to IOM DTM
- Killed*** 195 (at least 42 children) according to MoPH
- Wounded*** 914 (according to MoPH)
- Journalists** 3 Killed
- Collective Shelters** 18 (accommodating 1,105 IDPs)
- Health Facilities** 9 (PHCs closed in Marjayoun & Bint Jbeil)
- Public Schools** 50 (partially or fully closed in border villages)
- Water Facilities** 8 (damaged, impacting +100k residents)

RESPONSE

Basic Assistance	Food Security	Cash Assistance	Health
Core relief & clothing: 118,247 items distributed in the South of Lebanese governorates	Meals: 391,600 (served in the south collective shelters)	Multipurpose Cash Assistance: 18,637 (Lebanese households registered with UNHCR social safety net systems but currently not benefiting from assistance received from the cash for assistance in South and Nabatiyah in Dec 2023)	Health workers: 3,634 treated
2,957 gq's (kitchen sets, water kettles)	Food parcels: 21,881 (distributed across Lebanon)	16,500 (refugee households identified and/or registered in Nabatiyah, and South in Dec 2023)	Consultations: 3,177 (provided in satellite PHCs)
			RH services: 6,193 (provided in satellite PHCs)
WaSH	Education	Nutrition	Protection
Water Services: 589K (collected) / 160K (not for water tankers) / 30,754 (including dignity kits)	Online Learning: 43,000 (with 100% attendance) / Learning materials: 4,700 (provided)	Micronutrient supplements: 5,409 (children)	Interventions: 12,832 (beneficiaries received GUV, CR, PSEA & psychosocial support sessions)
	Transport allowance: 2,000 (million)	Nutrition: 50,806 (children)	

Flash Update: Bi-Weekly Basis by OCHA

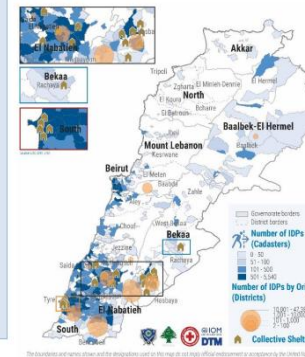
[Flash Update #12](#)

LEBANON: Flash Update # 12
Escalation of hostilities in south Lebanon
as of 21 February 2024

HIGHLIGHTS

- As of 20 February, 89,817 individuals (52 percent females) have been displaced from south Lebanon due to the ongoing hostilities along the Blue Line, around 2% increase over a week.
- As of 21 February, the Lebanese Ministry of Public Health (MoPH) has reported a total of 195 killed and 914 people wounded. At least 42 confirmed civilian deaths have been reported, nearly half of them females.
- On 10 and 14 February, Israeli airstrikes against several towns and villages in South Lebanon resulted in the deaths of thirteen civilians, including three children.
- On 21 February, an Israeli airstrike in the southern village of Majdal Zoun claimed the lives of a five-year-old girl and a woman.

DISPLACEMENT MAP – up until 20 February 2024



SITUATION OVERVIEW

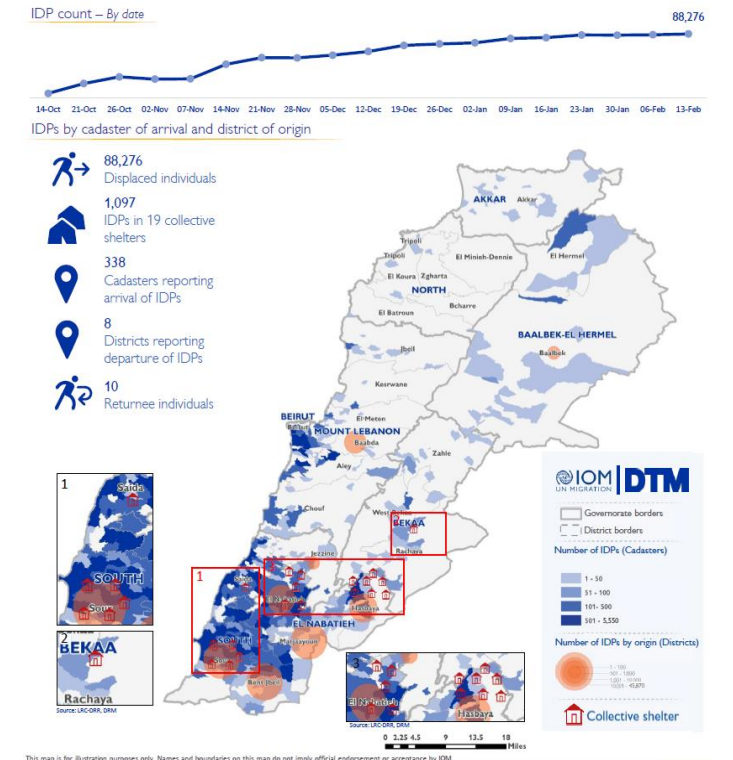
Since the onset of cross-border attacks on October 8, 2023, tensions along the Israel-Lebanon border have significantly intensified over the past two weeks. This period has been characterized by increased military activities and intensified airstrikes, resulting in the highest civilian casualties seen in over four months of cross-border exchanges.

On 10 February, three civilians, among them a Syrian national, lost their lives, and several others were injured in southern Lebanon. This followed a drone attack by Israel in Jabra, northern Saïda, and artillery shelling targeting the Houla border village. During this incident, a drone also launched a missile toward a mosque in Houla village.

Subsequently, on 14 February, the Israeli military announced an escalation in airstrikes targeting southern Lebanon, striking various towns and villages. These airstrikes resulted in the deaths of ten civilians, including three children.

Displacement Tracking: Weekly Basis by IOM

<https://dtm.iom.int/lebanon>



Escalation of Hostilities in South Lebanon

Ongoing Response



IDPs in Collective Sites

- Temporary shelters (2% of IDPs).
- Managed by DRR/DRM.
- In kind assistance to cover basic needs (WASH, Food, NFIs, Protection and others) in addition to access to WASH and health services (water trucking, rehabilitation in CS, PHC satellite unit).



IDPs in Urban Areas

- Registration led by municipalities.
- Enrollment process led by WFP for cleaning and verification of IDPs.
- Provision of in-kind assistance, access to education, expanded cash assistance (NPTP-ESSN).



People Remaining at Borders

- Field missions to border areas to better understand the needs, deliver assistance or post monitoring post.
- People reporting no access to chronic medications, water services are impacted, schools are closed.
- Assistance is limited.



Mainstreaming Components

Simona Pari, Inter-Agency Gender Specialist (UNDP)

Mainstreaming Components

What are the Mainstreaming Areas under the LRP?

There are six cross-cutting issues mainstreamed across sectors under the LRP:

 Conflict Sensitivity

 Protection

 Gender & GBV

 Prevention of Sexual exploitation and abuse (PSEA)

 Environment

 Energy

Mainstreaming Components

Conflict Sensitivity Mainstreaming Priorities 2024

- **Knowledge Sharing:** opening up tensions data among LRP actors and disseminating knowledge and sharing lessons learned (i.e. conflict-sensitive M&E).
- **Data Visibility and Outreach:** increasing data uptake and outreach between partners using user-friendly innovation streams (i.e. portals, dashboards, etc.).
- **Linking up to the Conflict Sensitivity global hubs:** aligning the humanitarian-stabilization landscape in Lebanon with global Conflict Sensitivity best practices.
- **Scale up of Conflict Sensitivity Training:** expanding the pool of trainees on conflict sensitivity and Do No Harm on both individual practitioner and institutional levels.
- **Supporting Collective Learning:** engaging in high-level conflict sensitivity policy development including with donors.

Conflict Sensitivity Focal Point: *Nisreen Jaafar, Conflict Analysis and Mainstreaming Officer (UNDP)*

Email: nisreen.jaafar@undp.org

Mainstreaming Components

Protection Mainstreaming Priorities 2024

- **Maintain existing protection analysis to enhance an inter-sectoral approach** to the analysis of age, gender, disability, and diversity factors across community groups where possible, filling identified data gaps and ensuring protection risks are considered and mitigated across sectors.
- **Work closely with other sectors to identify protection risks and implement concrete mitigation measures through their annual work plans** with focused support provided to Shelter, Basic Assistance, Health and WASH sectors.
- **To support in capacity building and training** provision for relevant stakeholders across sectors on Protection mainstreaming and legal topics
- **Extract disaggregated data across sectors** to ensure analysis of cross-sectoral vulnerabilities
- **Ensure workplans of all sectors consider protection mainstreaming action points** with reporting back to Protection sector leads and Inter-Sector Coordination
- Develop **protection referral pathways** to enhance the use, accuracy and timeliness in protection referrals
- **Accountability to Affected Populations** will continue to be central to the response. At a minimum, trainings on the Inter-Agency referral tools will be provided, the Inter-Agency online service mapping and referral reporting system will be maintained and updated.
- Enhanced **analysis of Complaint and Feedback mechanisms** are safely accessible and cross-sectoral reporting on key results is shared and programs are adapted, where needed.
- **The Protection Mainstreaming Community of Practice** will continue to support staff across sectors, who are working within their organizations on protection mainstreaming and related cross-cutting topics. It will be a space to support learning needs and best practices and technical trainings and events will be arranged.

Protection Focal Point: *Sophie Etzold, Protection and GBV Sector Coordinator (UNHCR)*

Email: etzold@unhcr.org

Mainstreaming Components

Gender & GBV Mainstreaming Priorities 2024

- **Include gender priorities** in Annual Work Plans – Based on sectoral Gender Action Plans.
- **Continue sector trainings and mentoring and support** of sectors gender and GBV focal points.
- Rollout and sensitization of partners on **sectors Tipsheets**.
- Support to expand and update gender analysis – **draft gender briefings** .
- **Review annual work plans of all sectors** and provide support and monitor gender and GBV mainstreaming regularly.
- **Inter-Agency GBV Safety Audit** at country-wide level to be done with involvement of sectors.
- **Enhance the use of GBVIMS data and trends** as well as GBV trend analysis to ensure risk mitigation.
- **Strengthen work with other sectors on timely and effective GBV Referrals** through updated Referral Pathways.

Gender & GBV Focal Point: *Simona Pari, Inter-Agency Gender Specialist (UNDP) & Pamela Di Camillo, Gender & GBV Task Force Co-Lead (UNFPA)*
Emails: simona.pari@undp.org and dicamillo@unfpa.org

Mainstreaming Components

PSEA Mainstreaming Priorities 2024

- Provide ongoing **training and mentorship to PSEA Focal Points** and mainstream PSEA within Sectors.
- Rollout **PSEA preparedness Tipsheets** to prevent and respond to SEA.
- Enhance the use of the **SEA Risk Assessment tool** to minimize and mitigate SEA risks.
- Strengthen work with other sectors on timely and effective **SEA Reporting and referral**.
- Coordinate with all sectors on a regular basis to provide support on PSEA mainstreaming.

The full set of PSEA Network resources is available [here](#).

PSEA Focal Point: *Elisa Cappelletti, PSEA Network Coordinator (OCHA)*

Email: cappelletti@un.org

Mainstreaming Components

Environment Mainstreaming Priorities 2024

1. Strengthen the adoption of the environmental marker for screening of project with reporting through [ActivityInfo](#).
2. Improve project design to ensure sustainability of the intervention, including but not limited to environmental sustainability and climate proofing. Joint social and environmental results are strongly encouraged.
3. Improve reporting on environmental metrics, including committed financial resources.

Resources available [here](#):

- Environmental Marker Guide.
- Training resources on solid waste management, water and wastewater management, and natural resources management, and project climate-proofing.

The ETF is available to support the sectors as needed. Periodic meetings will be held to brainstorm on needs and possible collaboration avenues.

Environment Focal Point: *Nour Masri, Environment Task Force Coordinator (MoE)*

Email: masri.nour@gmail.com

Mainstreaming Components

Shifting from Energy Sector to Mainstreaming Energy

- Energy Mainstreaming is led by the Ministry of Energy and Water (MoEW) and coordinated by UNDP – members will be WASH, Education, Health, Social Stability, Livelihoods and Shelter sectors.

The role of the task force will be to ensure

- Coordination of who is doing what, where
 - Discuss the challenges and gaps across sectors
 - Sharing of lessons learnt and technical guidelines
 - Draft key recommendations for sectors
 - Consolidate reporting
- Energy interventions under the LRP focuses on short- and medium-term projects to directly address the impact of the multiple crises on the sector (however, it does not cover reform which sits under the (3RF)
 - Energy interventions must build upon national strategies, including the Policy Paper for the Electricity sector (MoEW, 2010), which was updated in 2019, along with national action plans for renewable energy and energy efficiency
 - Prioritization is on ensuring: **conflict sensitive interventions - larger scale impact - legality of interventions.**

Energy Focal Point: *Noritaka Hara Masri, Energy Focal Point (UNDP)*

Email: noritaka.hara@undp.org

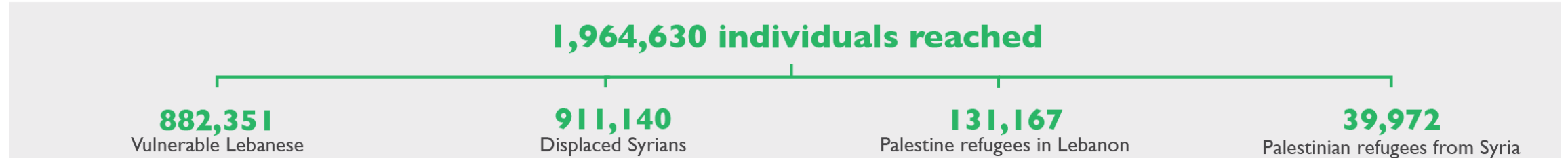


2023 End of Year Reporting

Camilla Jelbart, Senior Inter-Agency Coordinator (UNHCR)

2023 End of Year Reporting

LCRP 2023 Key Results



- > **US \$465 million injected into Lebanon's economy** through cash-based interventions for vulnerable families = 1/3rd of total funding of \$1.3 billion.
- 2.1 million **food** assistance services (both in-kind and cash-based).
- 324,472 economically vulnerable households received regular, unconditional, and unrestricted **cash grants**.
- > 3M consultations were provided to about 1.5M individuals through MoPH **Primary Healthcare Centers**, around 1.7M individuals access free-of-charge medication for chronic and acute diseases.
- > 263,360 caregivers of children under 5 reached with messages on breastfeeding, Infant and Young Child Feeding (IYCF), responsive care and feeding, healthy diets, and maternal **nutrition**.
- 910,478 primarily Lebanese individuals living in permanent residences were provided access to an adequate quantity of safe **water** in their dwellings; over 3 million individuals are estimated to have benefited from around 400,000 cubic meters of water per day.










2023 End of Year Reporting

LCRP 2023 Key Results

- **1,038 public schools** supported with school funds & parent council funds in 1,074 schools: **Education** made available to 279,687 Lebanese & 248,025 non-Lebanese students.
- ~ 900,000 individuals benefited from a variety of **protection interventions**, including 331,583 for legal services and advocacy, and 345,504 for community-based protection, empowerment, and prevention programs.
- **Child protection** services reached 11,245 children (4,099 girls and 7,146 boys) & 26,816 girls, boys, and caregivers accessed psychosocial support.
- **GBV** service providers offered services (case management, psychosocial support, recreational activities- for GBV survivors for 52,178 individuals in safe spaces.
- Assistance provided 18,018 **micro and small businesses** through financial resources, cash, and in-kind grants
- 19,909 individuals (55% Lebanese and 45% displaced Syrians) able to access **temporary employment opportunities** under labor-intensive programs.
- 201,753 individuals (51% women) living in **temporary shelters** supported to maintain their dwellings at livable and safe conditions.
- **Social Stability** sector partners implemented 237 municipal or cluster level basic services and solid waste management projects, supporting 400 municipalities and public institutions; & 10,834 individuals participated in 179 community events organized by the “Conflict Prevention Mechanisms”.

2023 End of Year Reporting

Support to Lebanese

-  **1,662,669 subsidized health consultations** were provided to vulnerable Lebanese.
-  ~ **680,000 Lebanese with improved access to safe water** for drinking and domestic use & ~ **2.25 M Lebanese** maintaining consistent and reliable access to water.
-  **277,000** Lebanese children able to enroll in **public schools** in the 2022-2023 school year.
-  **75,752*** Lebanese households accessed regular, unrestricted and unconditional **cash** assistance through National Poverty Targeting Programme & NGOs & **468,490*** Lebanese benefitted from cash assistance through the Food Security and Agriculture sector.
-  **181 Municipalities supported** to strengthen basic service provision, with **\$30 M invested** in municipal/community support projects.
-  **18,018 Lebanese MSMEs** supported with cash and in-kind grants & **\$1.6 M invested** in labour-intensive public work projects, with 10,867 Vulnerable Lebanese engaged.
-  **35,621** Lebanese reached through activities on **Gender and GBV** in safe spaces or at community level.
-  **184,173 Lebanese children** under 5 were screened for acute **malnutrition** at PHC and at community levels.
-  **8,243** vulnerable Lebanese supported with **cash-for-rent and shelter upgrades**.



Information Management Tools

Maroun Sader, Assistant Information Management Officer (UNHCR)

Information Management Tools

What are the different IM Tools?

The [Lebanon Information Hub](#) is an online platform hosting all Information Management (IM) tools.



Data Portal

Main gateway to operational data/



Inter-Sector Service Mapping

Mapping of services and assistance in all governorates, including referral pathways & 5W information.



Activity Info

Partners' activity/output reporting tool.



Refugee Lebanon

Webpage providing information on all humanitarian aid services available in Lebanon.

Information Management Tools

What are the different IM Tools?



Assessment Registry (LASER)

Online repository of on-going and past assessments in Lebanon.



Fact Book

Searchable repository of interesting facts and figures related to the response.



Map Hub

Go-to place for dynamic maps related to the Syria Crisis Response in Lebanon.



Contact Hub

Online application to register for Inter-Sector mailing lists.

Information Management Tools

What are the different IM Tools?



VASyR Hub

This portal provides access to all VASyR reports and an extensive range of data tables and resources.



Emergency Tools

Tools for reporting on extreme weather and Contingency Stocks.



Reporting Tools

Directory of sectors log frame, list of indicators and ActivityInfo user guides.



Contact List

Lists of Inter-Sector Leaders, Sector Coordinators, and IM Focal Points.



Reporting & Knowledge Management

Maroun Sader, Assistant Information Management Officer (UNHCR)

Reporting and Knowledge Management

LRP Reporting, Information Products, and Tools

The yearly **Reporting Calendar** ensures these products are finalized and circulated in a timely manner

Reporting

- Statistical & Sector dashboards (monthly, quarterly, and annual).
- Public Institutions Support (PIST) Report (annual).
- Funding Update (quarterly).
- LRP Annual Report.

Information Products

- LRP Inter-Sector Situation Update (quarterly).
- Assessments (e.g. VASyR, VARON, Tensions surveys, etc.)
- In Focus Report.

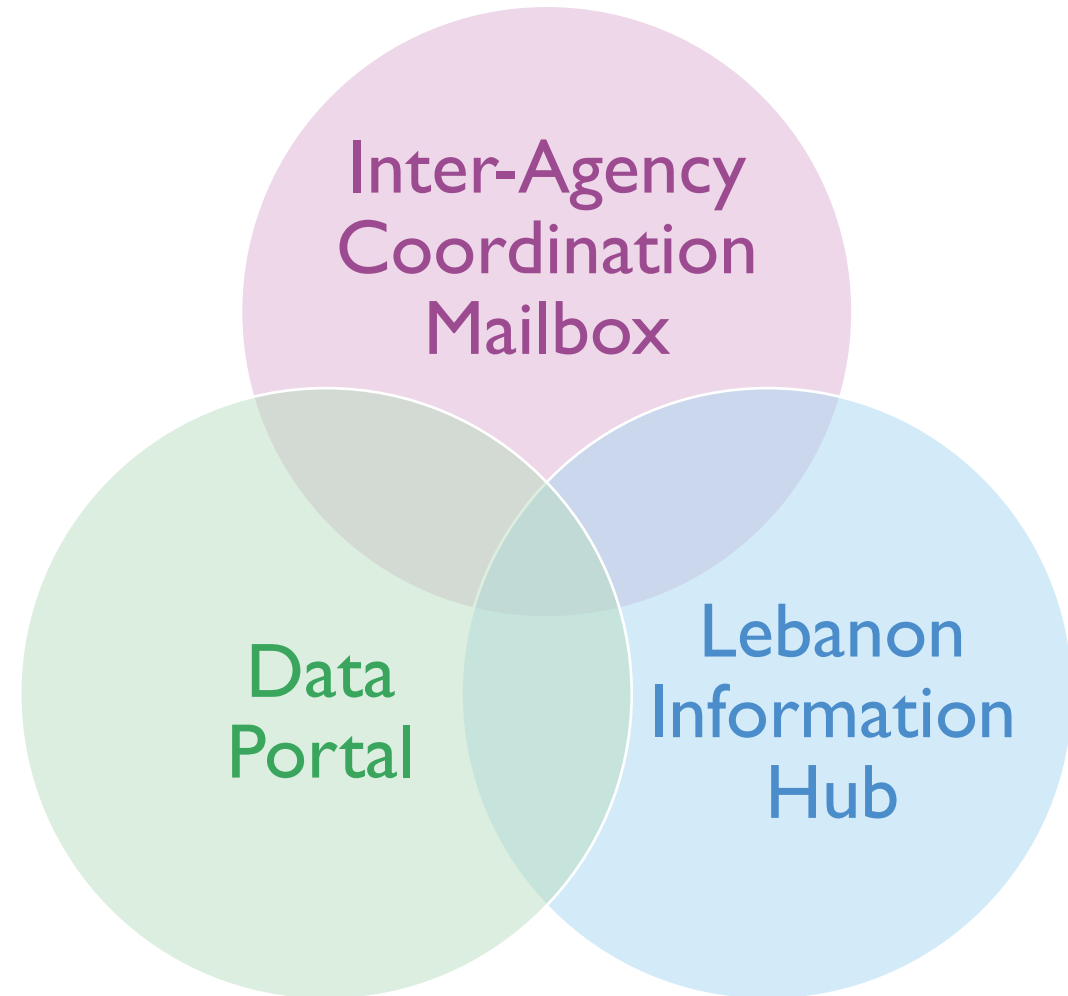
Tools

- Sectoral technical guidance, minimum standards.
- LCRP Service Mapping.

Reporting and Knowledge Management

Communication and Access to LCRP Products and Tools

Partners/donors/NGOs and interested individuals can subscribe to the Inter-Agency mailing list to receive updates related to the response across all sectors and areas through the [Contact Hub](#)



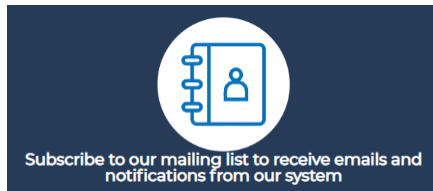
Reporting and Knowledge Management

How to Subscribe to the Inter-Agency Mailing List

To receive inter-agency updates and invitations to meetings, or to sign up for a specific sector working group, please subscribe to the inter-sector mailing list(s). You can choose which specific sector(s) and which field office(s) you would like to subscribe to.

How to Subscribe:

1. Visit the Lebanon Information Hub: <https://ialebanon.unhcr.org/>
2. Scroll down to find the following icon and click on it.



3. Fill in all the required information, including your name, email address, and other relevant details.
Note: *If your organization name is not listed, you can select "other organization" or a similar option.*
4. Click the "Add record" button to proceed.
5. On the subscription form, you will have the option to choose different sectors and geographic levels under which you wish to be registered. *Select the relevant sectors that align with your interests or responsibilities.*
6. Once you have added all the related sectors, click on the "**Save record**" button to complete the subscription process.
7. To unsubscribe from the mailing lists in the future, simply click [unsubscribe](#).



Questions?

Key Links

- [3RP Regional Strategic Overview 2024](#)
- [Lebanon Information Hub](#)
- [LRP Draft Sector Strategies and Logframes 2024](#)
- [LRP Coordination Meeting Schedule 2024](#)
- [LRP Sector Coordination Teams 2024](#)
- [LCRP End of Year LCRP Inter-Sector Dashboard for 2023](#)
Note: Links to all the Sector EoY dashboards are available within the Inter-Sector dashboard.
- LCRP End of Year Support to Lebanese Dashboard: [Arabic](#) and [English](#)
- [LCRP End of Year Funding Update 2023](#)

For general queries, please contact Inter-Agency Coordination at lebbeia@unhcr.org
For IM related queries, please contact Maroun Sader at sader@unhcr.org or Raffi Kouzoudjian at kouzoudj@unhcr.org.



Thank you