

National Performance Snapshot

Population

Refugees and asylum-seekers



1,702,278

Refugees and asylum seekers

432,572

Households

132

Partners in Response

02

Refugee Led Orgs

16

Government Partners

10

UN Agencies

On average two performance indicators are measured per sector against the annual 2024 RRP targets

31

National NGOs

73

International NGOs

Sector of Intervention

Indicator

Achieved

Target

Education



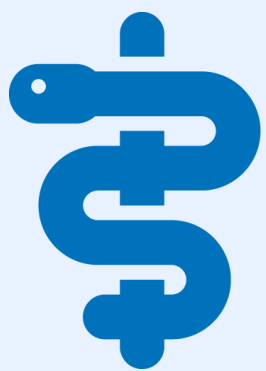
% children enrolled in Primary



Teacher Pupil ratio (1:65)



Health & Nutrition



Under 5 mortality rate



MAM treatment recovery rate



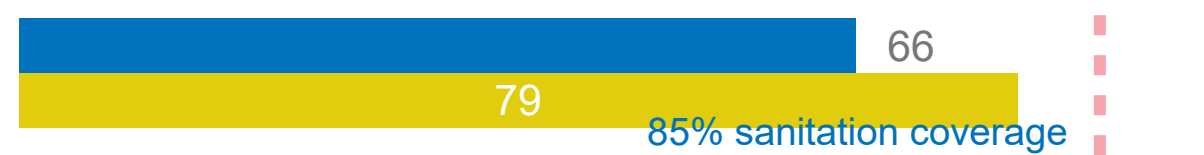
WASH



of litres per person per day



% household latrine coverage



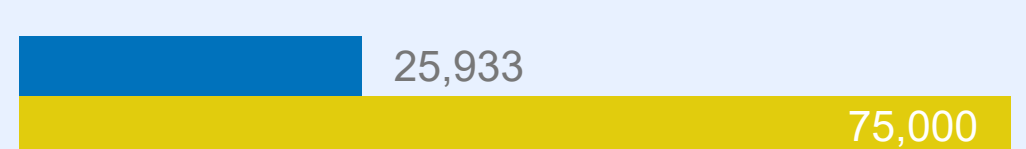
Energy & Environment



of hectares of woodlots/plantations established



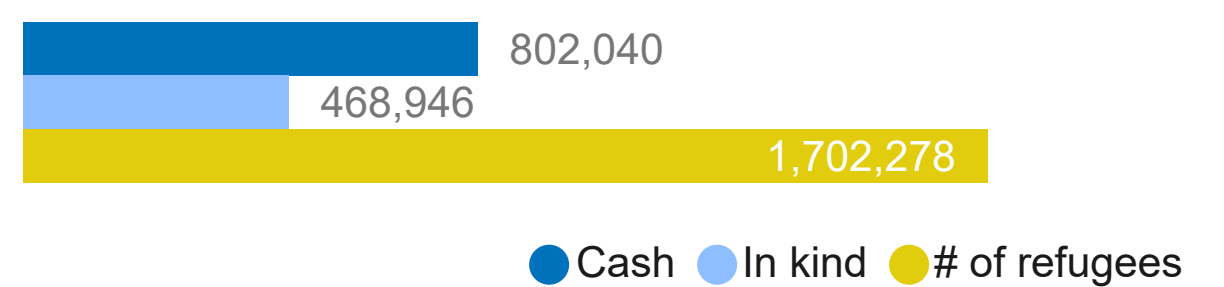
of HH supported with clean and/or energy efficient technologies for cooking



Food Security



of refugees and asylum seekers receiving food assistance disaggregated by modality (Cash + In-kind)



Quantity of food provided (Metric Tonnes)



Livelihoods & Resilience

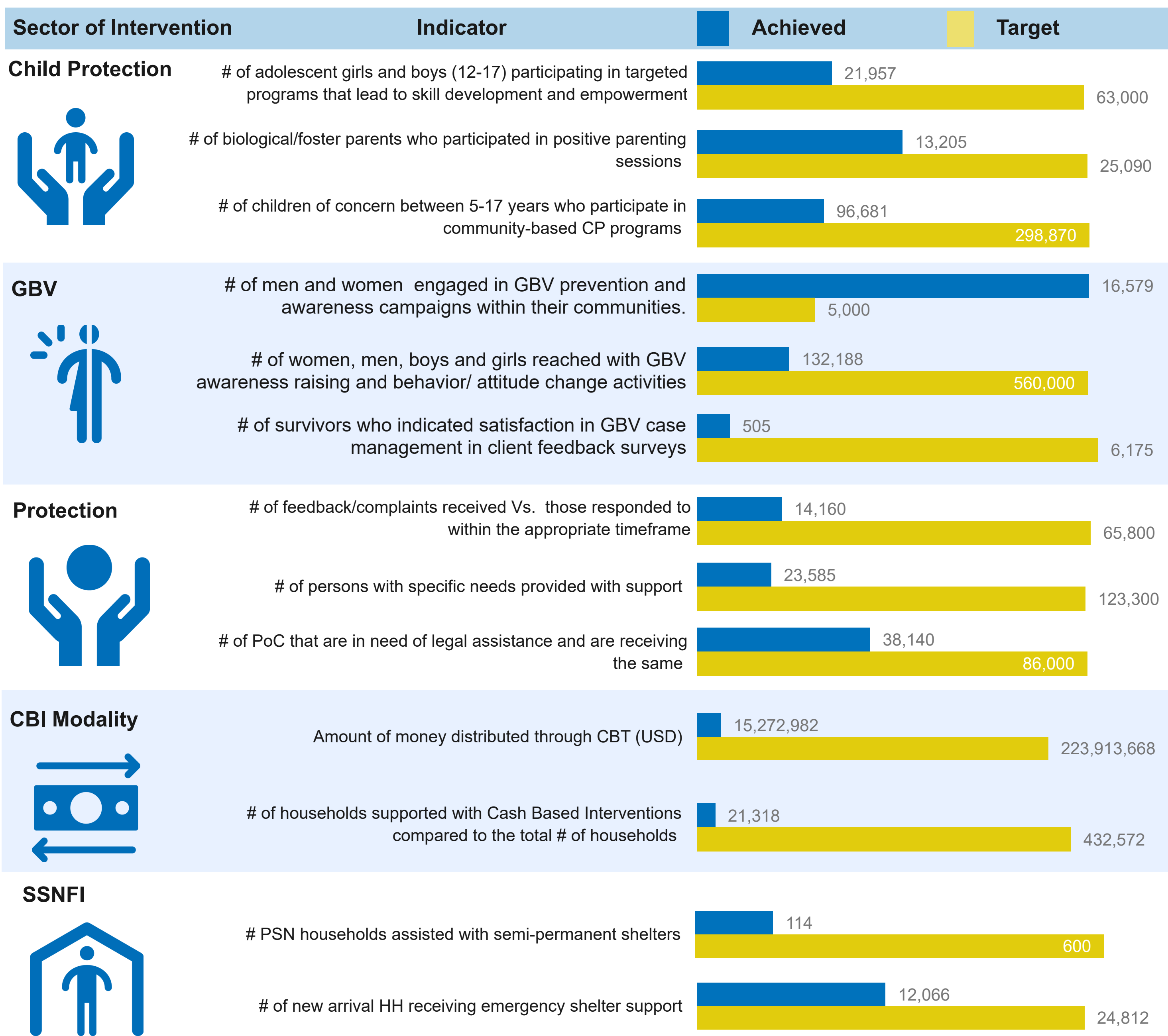


HHs receiving livelihood support



of men, women, boys and girls trained on financial literacy





Partner Presence by Q2 2024, UN Agencies and Government

National NGOs

ACORD, AFARD, AFI, AWYAD, CEFORD, CEHURD, CEPAD, ELECU, HADS, HAF Uganda, HFU, IDI, JEEP, KRRC, MPK, MSU, N&T, Nsamizi, PALM Corps, PICOT, Post Bank, RHU, RICE-WN, Ripple Effect, SAU, ThriveGulu, TPO, TVRA, URDMC, and WN-CARD

Refugee Led Organizations (RLOs)

I CAN SSD and YSAT

International NGOs

AARJ, ACAV, ACF, ACODEV, ADRA, AFOD, AHA, AIRD, Airtel, Alight, AMREF, APPCO, AVSI, AWR, AyudaEA, BfA, BRAC, C&D, CARE, Caritas Switzerland, CESVI, Child Voice, COVID, CRS, CUAMM, DCA, DRC, ENABEL, Equity Bank, FCA, FH, FHA, FIDA/FMU, ForAfrika, FRC, GF, GNIU, HHA, HI, HIJRA, HIM-Uganda, IRC, IsraAID, JRS, Kulika, LWF, Malteser, MC, MCCJ, MSF, MTI, NRC, Oxfam, Plan, RAHU, SCI, SHA, TRI, TTR, URCS, VE, VSO, WCC, WCH, WHH, WIU, WMU, WVI, and ZOA

UN Agencies

FAO, ILO, IOM, UNFPA, UNHCR, UNICEF, UNOPS, UNWOMEN, WFP, and WHO

Government

Adjumani DLG, Isingiro DLG, Kamwenge DLG, KCCA, Kikuube DLG, Kiryandongo DLG, Koboko DLG, Kyegegwa DLG, Lamwo DLG, Madi-Okollo DLG, NARO, NFA, Obongi DLG, OPM, Terego DLG, and Yumbe DLG