

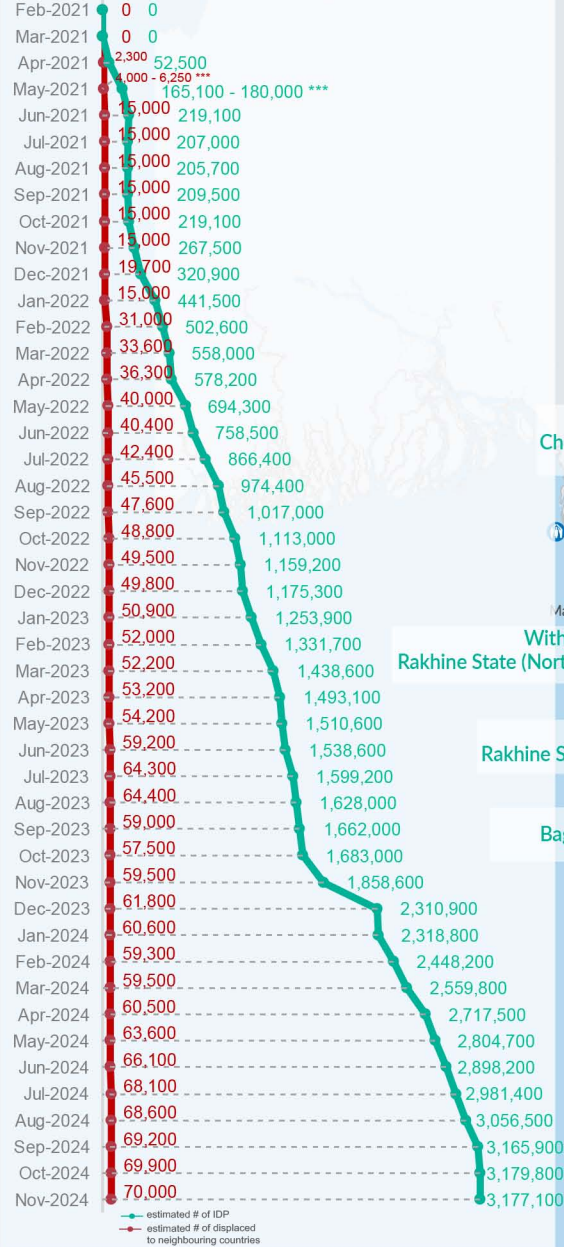
Key figures

Estimated # of IDPs → 3,177,100

Estimated # of displaced to neighbouring countries → 70,000

Source : UN in Myanmar

Estimated displacement figures by Month



*141,100 persons are displaced by armed conflict in neighbouring Kayah State while 4,600 persons are displaced by inter-EAO conflict between SSPP and RCSS.

**UN Estimates

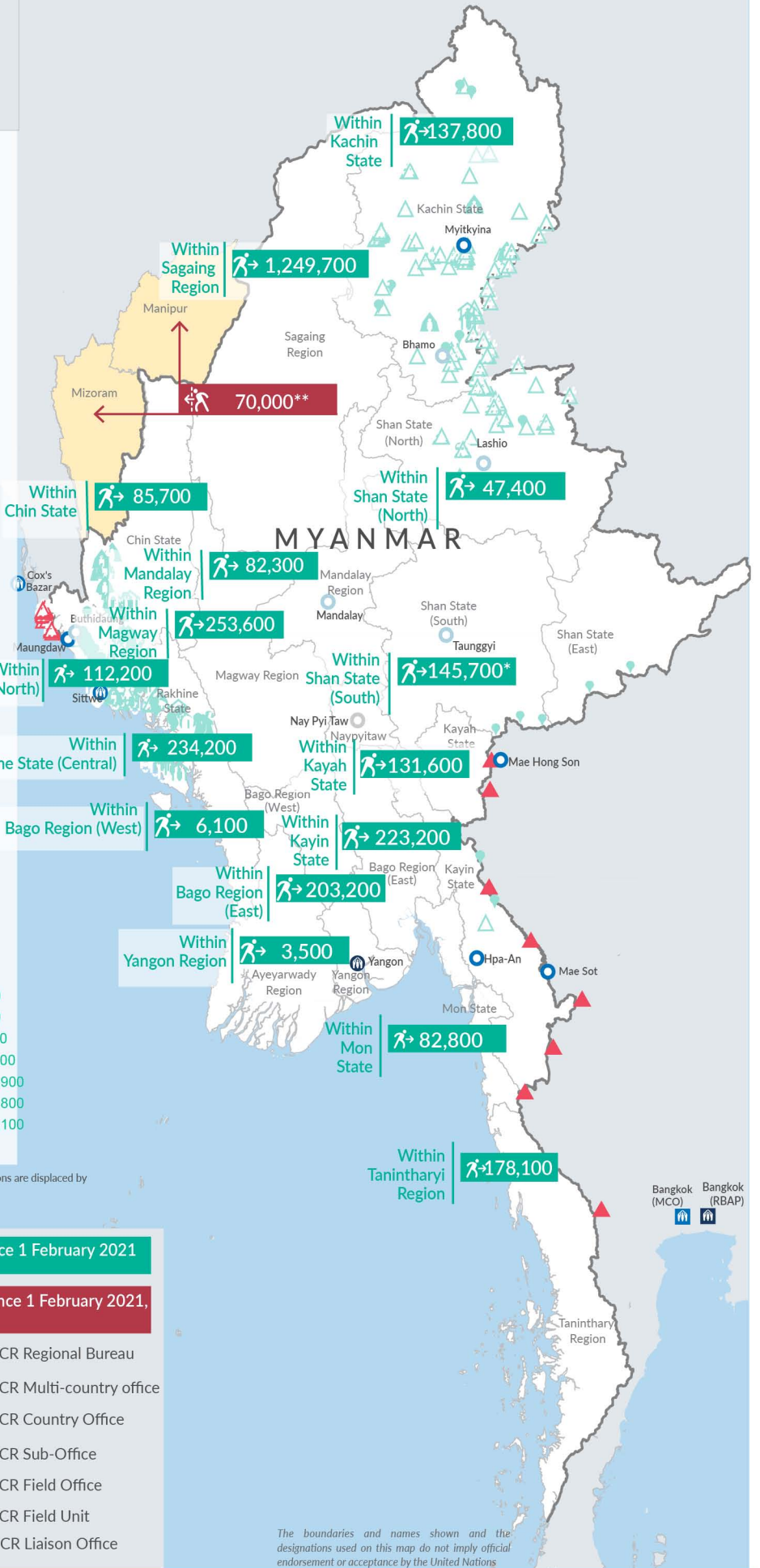
***Range of figures was used while data collection was in progress.

Estimated internal displacement within Myanmar since 1 February 2021 (rounded to the nearest hundred)

Estimated displacement to neighbouring countries since 1 February 2021, who remain displaced (rounded to the nearest hundred)

- IDP unplanned settlement (pre-1 Feb 2021)
- IDP Center (pre-1 Feb 2021)
- IDP spontaneous location (pre-1 Feb 2021)
- IDP planned settlement (pre-1 Feb 2021)
- Temporary shelter for displaced people from Myanmar
- Refugee, planned settlement
- States/Provinces with new arrivals
- International boundaries
- UNHCR Regional Bureau
- UNHCR Multi-country office
- UNHCR Country Office
- UNHCR Sub-Office
- UNHCR Field Office
- UNHCR Field Unit
- UNHCR Liaison Office

The boundaries and names shown and the designations used on this map do not imply official endorsement or acceptance by the United Nations



Key figures


3,454,600

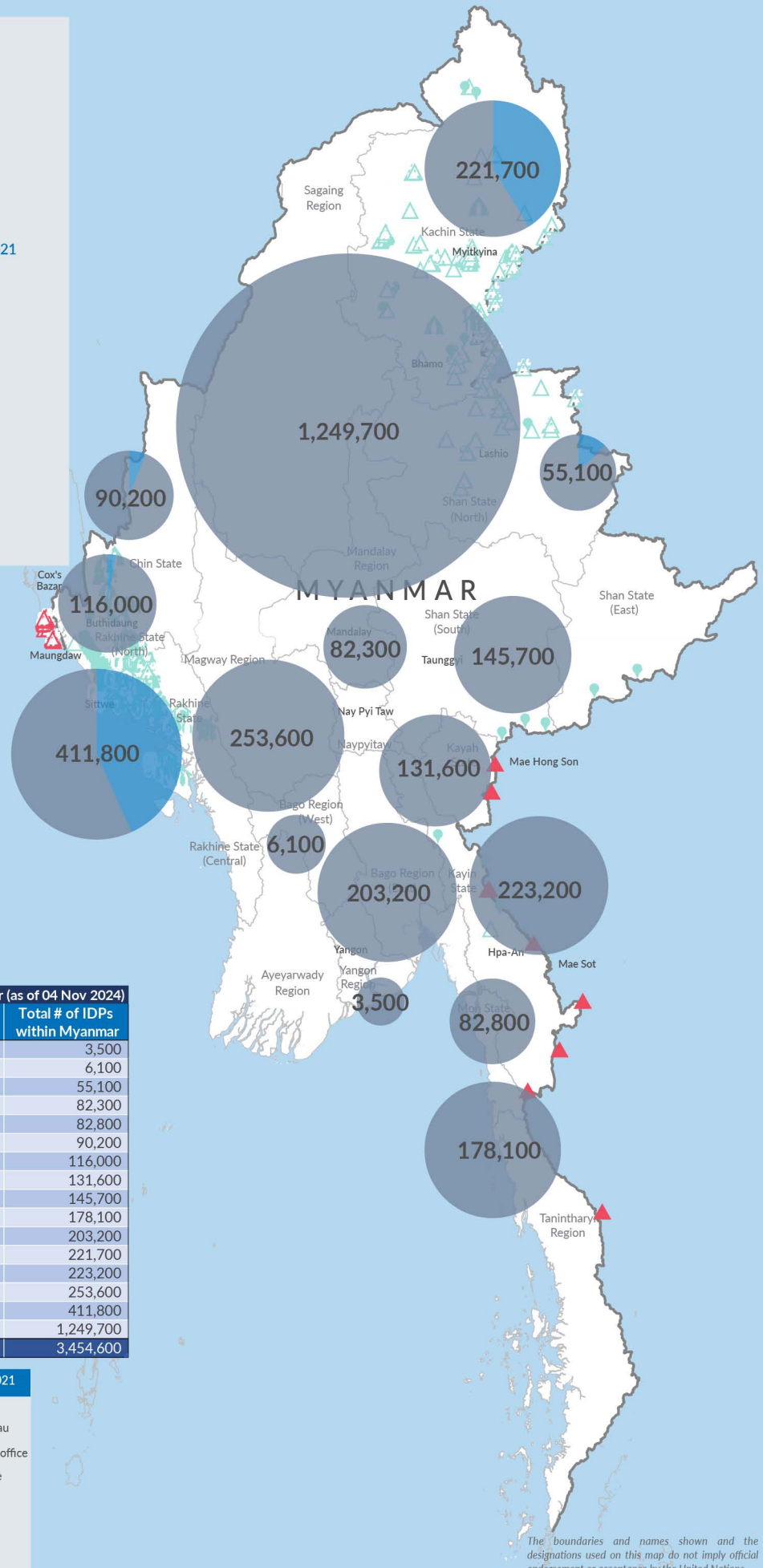
Estimated total IDPs within Myanmar


277,500
 Estimated # of IDPs displaced prior to 1 Feb 2021
 (As of 30 Jun, 2024)


3,177,100
 Estimated # of IDPs displaced post 1 Feb 2021
 (As of 04 Nov, 2024)



 Prior to 1 Feb 2021
 Post 1 Feb 2021

Source : UN in Myanmar


Estimated total internally displaced person (IDPs) within Myanmar (as of 04 Nov 2024)

State/Region	Prior to 1 Feb 2021 IDPs	Post 1 Feb 2021 IDPs	Total # of IDPs within Myanmar
Yangon Region	-	3,500	3,500
Bago Region (West)	-	6,100	6,100
Shan State (North)	7,700	47,400	55,100
Mandalay Region	-	82,300	82,300
Mon State	-	82,800	82,800
Chin State	4,500	85,700	90,200
Rakhine State (North)	3,800	112,200	116,000
Kayah State	-	131,600	131,600
Shan State (South)	-	145,700	145,700
Tanintharyi Region	-	178,100	178,100
Bago Region (East)	-	203,200	203,200
Kachin State	83,900	137,800	221,700
Kayin State	-	223,200	223,200
Magway Region	-	253,600	253,600
Rakhine State (Central)	177,600	234,200	411,800
Sagaing Region	-	1,249,700	1,249,700
Grand Total	277,500	3,177,100	3,454,600

Estimated internal displacement within Myanmar Pre+Post 1 February 2021 (rounded to the nearest hundred)

-  IDP unplanned settlement (pre-1 Feb 2021)
-  IDP Center (pre-1 Feb 2021)
-  IDP spontaneous location (pre-1 Feb 2021)
-  IDP planned settlement (pre-1 Feb 2021)
-  Temporary shelter for displaced people from Myanmar
-  Refugee, planned settlement
-  International boundaries
-  UNHCR Regional Bureau
-  UNHCR Multi-country office
-  UNHCR Country Office
-  UNHCR Sub-Office
-  UNHCR Field Office
-  UNHCR Field Unit
-  UNHCR Liaison Office

The boundaries and names shown and the designations used on this map do not imply official endorsement or acceptance by the United Nations