



# Israeli Hostilities on Lebanon

## SITUATION REPORT #38



06 November 2024 - Till 6:00 P.M.

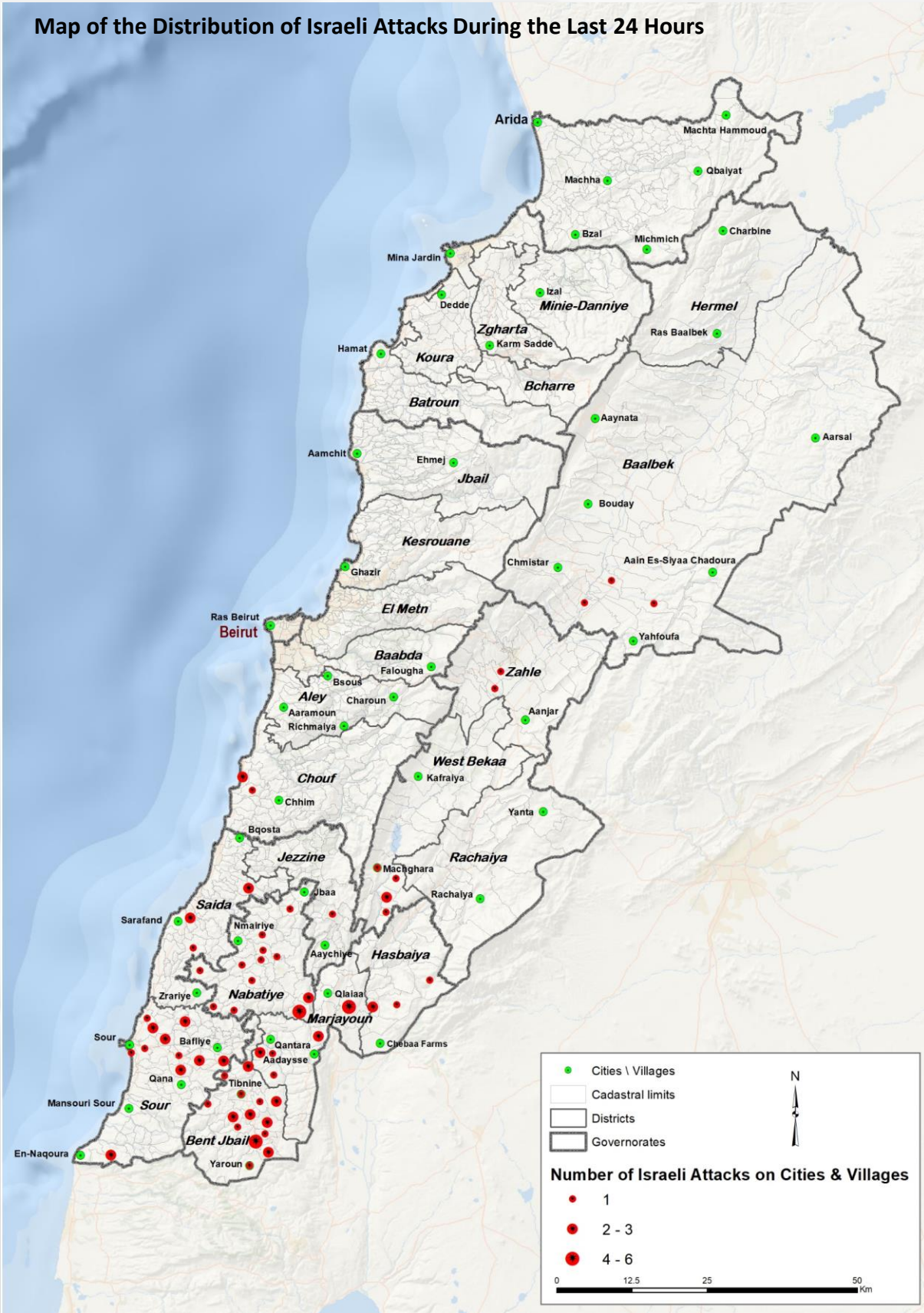
### SITUATION OVERVIEW

- During the last **24** hours, **95** airstrikes were recorded in various areas of Lebanon, mostly concentrated in Nabatiyeh (**57** strikes) and the South (**25** strikes), bringing the total number of attacks since the beginning of the aggression to **12,202**.
- The **Ministry of Public Health** issued the toll of martyrs and injuries during the last **24** hours, where **37** martyrs and **142** wounded were recorded, bringing the total number since the start of the aggression to **3,050** martyrs and **13,695** wounded.
- To date, **1,140** accredited shelters have been opened to accommodate and receive IDPs, and the number of accredited shelters has reached a maximum capacity of **965**.
- The total number of registered IDPs in accredited shelters reached **190,632** individuals (**44,977** families), with the highest percentage of IDPs recorded in Mount Lebanon Governorate and Beirut. It is estimated that the number of IDPs is much higher.
- From September 23 to November 6, 2024, **General Security** recorded the crossing of **367,493 Syrian citizens** and **189,999 Lebanese citizens** into the Syrian territory.
- The **National Committee for the Coordination of Crisis Response** is working with all relevant ministries to secure additional shelters in various governorates to receive the displaced.
- **Security Agencies** are working to maintain security, contribute to assisting the displaced, distribute food and fuel, protect shelters, prevent monopolies, control prices, and monitor and control borders.
- A **Kuwaiti** medical aid plane landed at Beirut's Rafic Hariri International Airport.
- The nineteenth **Saudi** relief plane, operated by the King Salman Humanitarian Aid and Relief Center, arrived at Rafic Hariri International Airport yesterday, and the cargo of the plane included various relief aid, including food, medical and shelter materials.

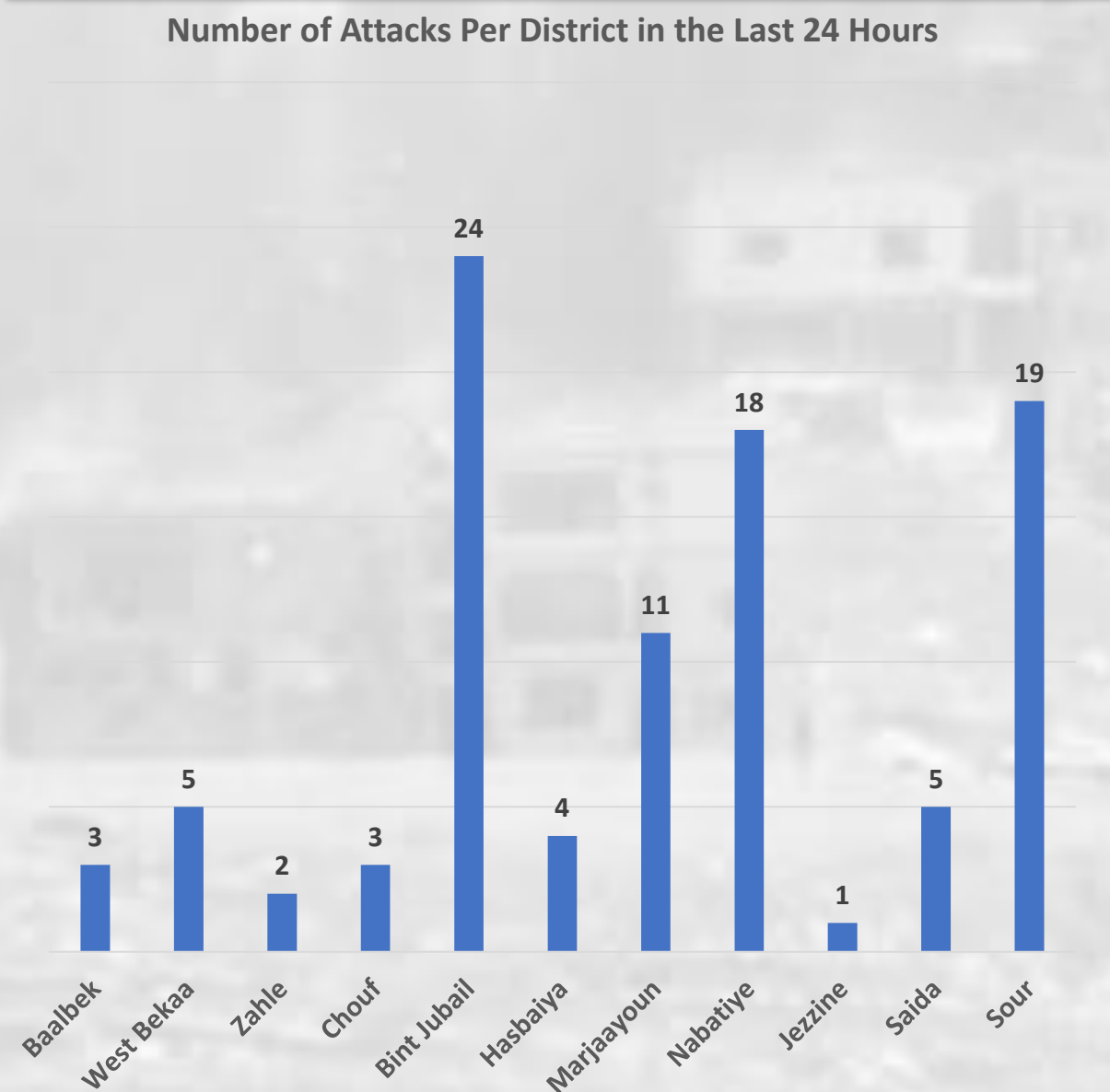
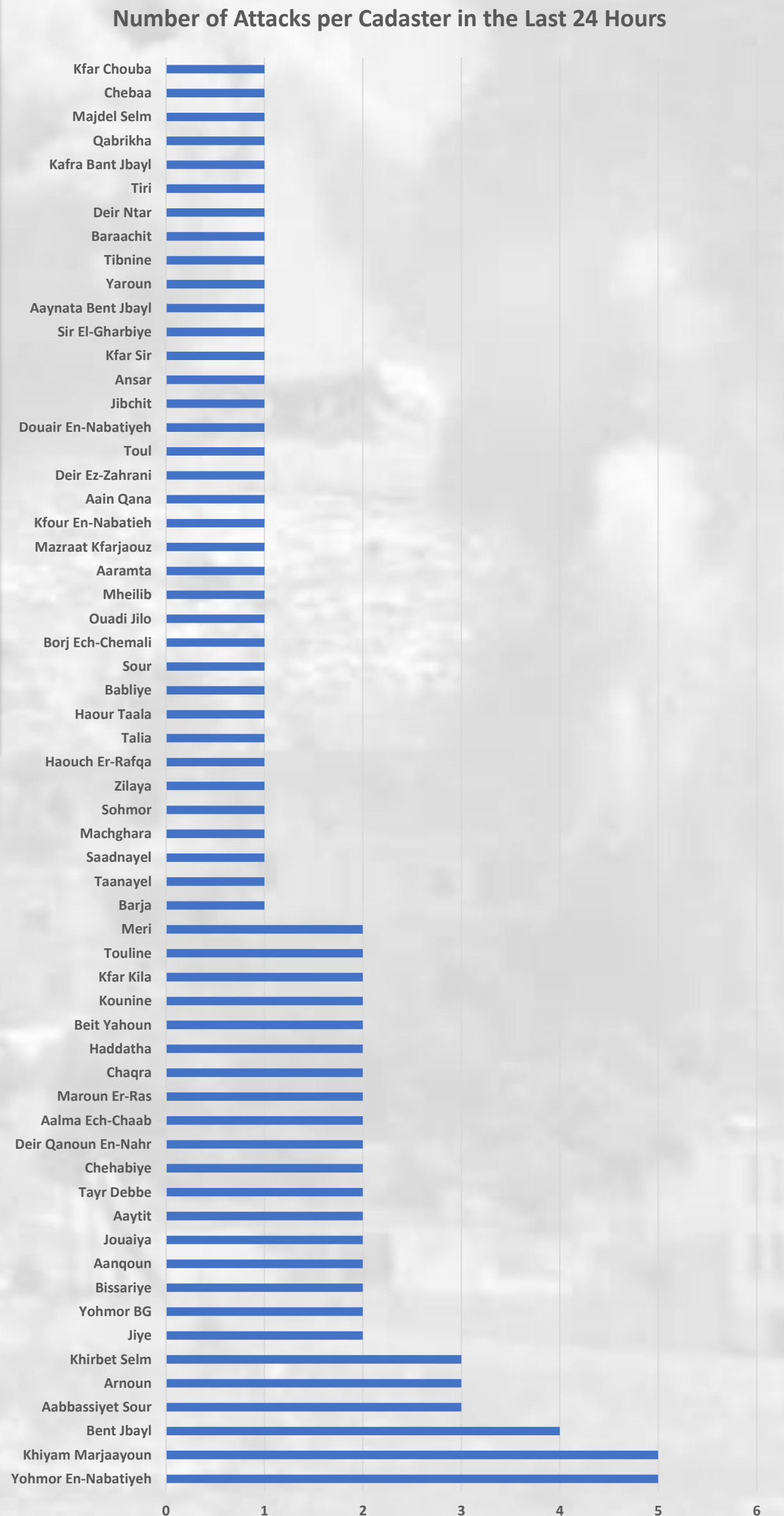
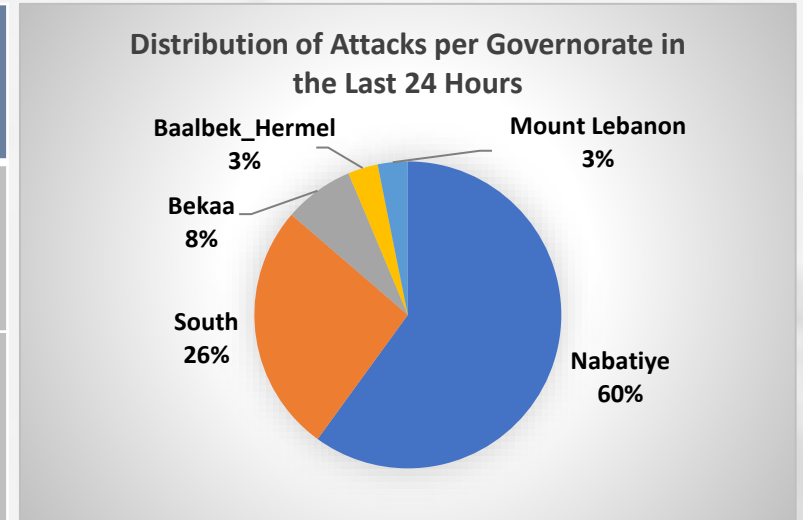


# FREQUENCY OF ATTACKS ON LEBANON IN THE PAST 24 HOURS

According to the daily report prepared by the National Center for Natural Hazards and Early Warning / National Council for Scientific Research on **06/11/2024**, the attacks on Lebanon are summarized as follows:



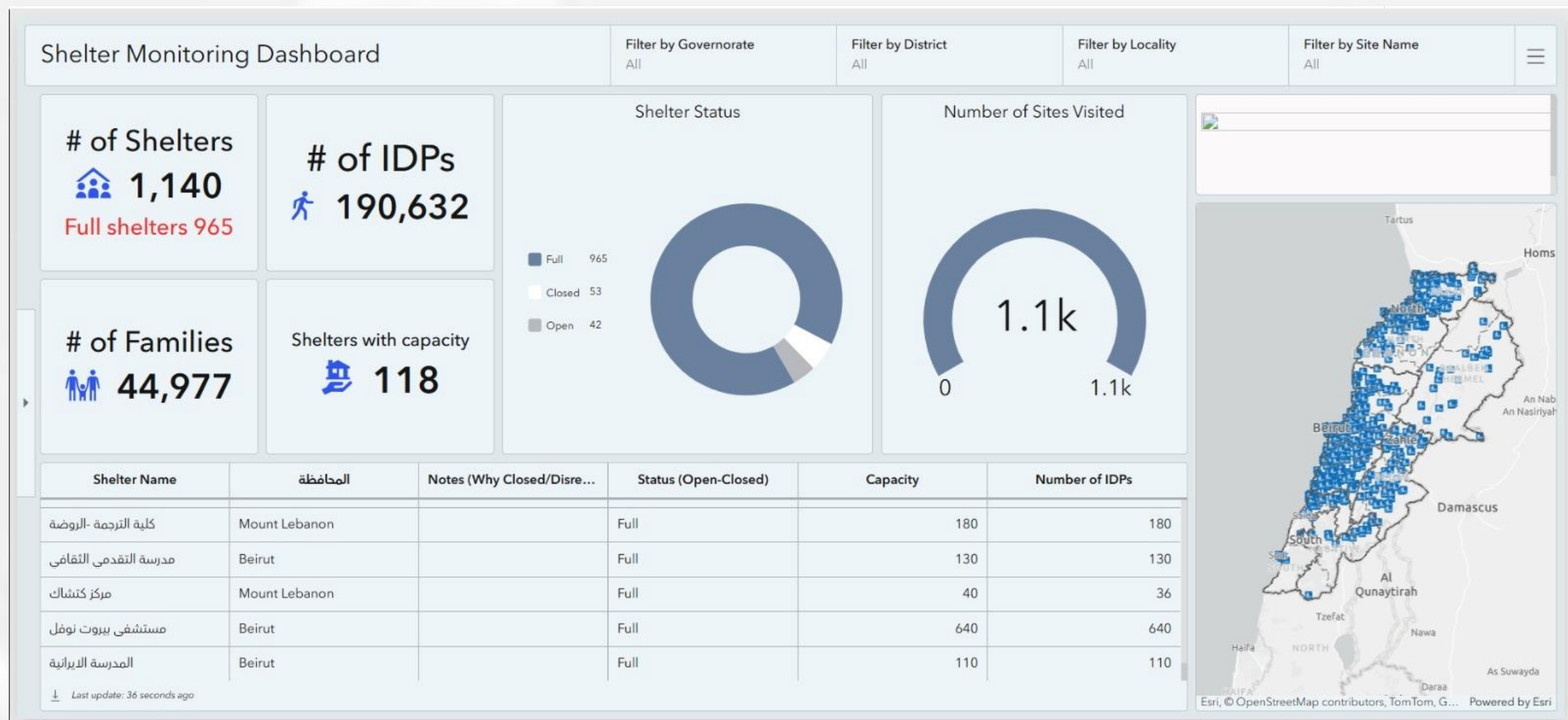
Attacks	
Cumulative	12,107
In 24 Hours	95



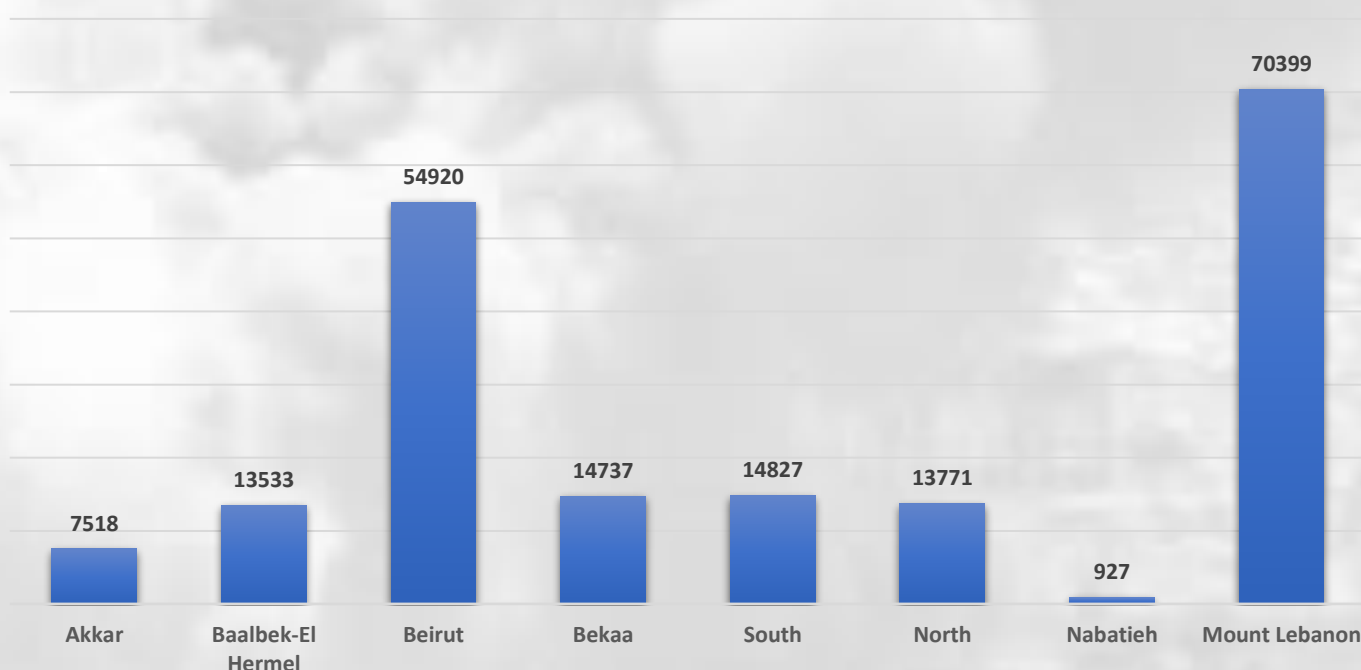


# MOVEMENT OF INTERNAL DISPLACEMENT

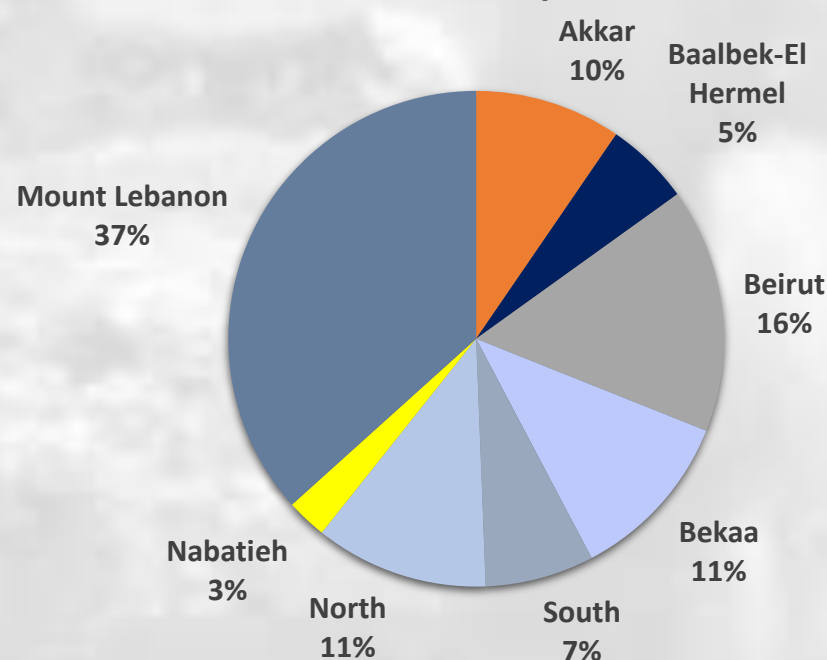
The number of IDPs registered in shelters identified by the National Operations Room has reached **190,632** IDPs so far, according to the National Platform.



Number of IDPs Per Governorate

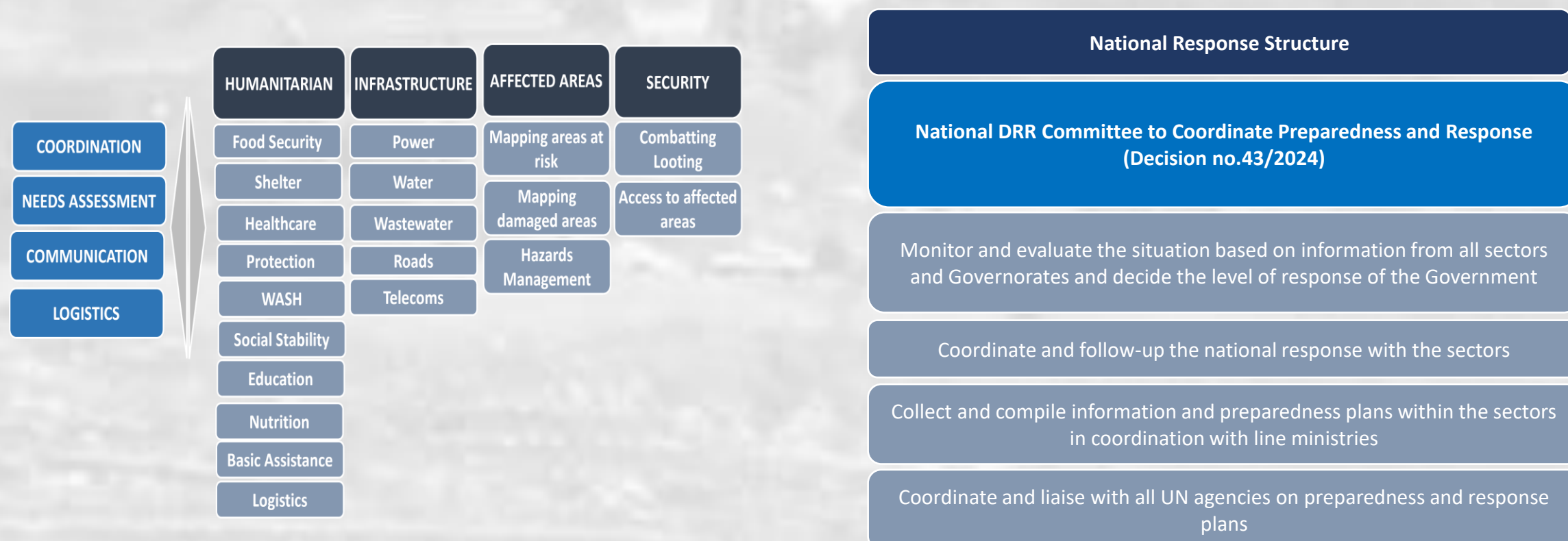


Distribution of Shelters per Governorate

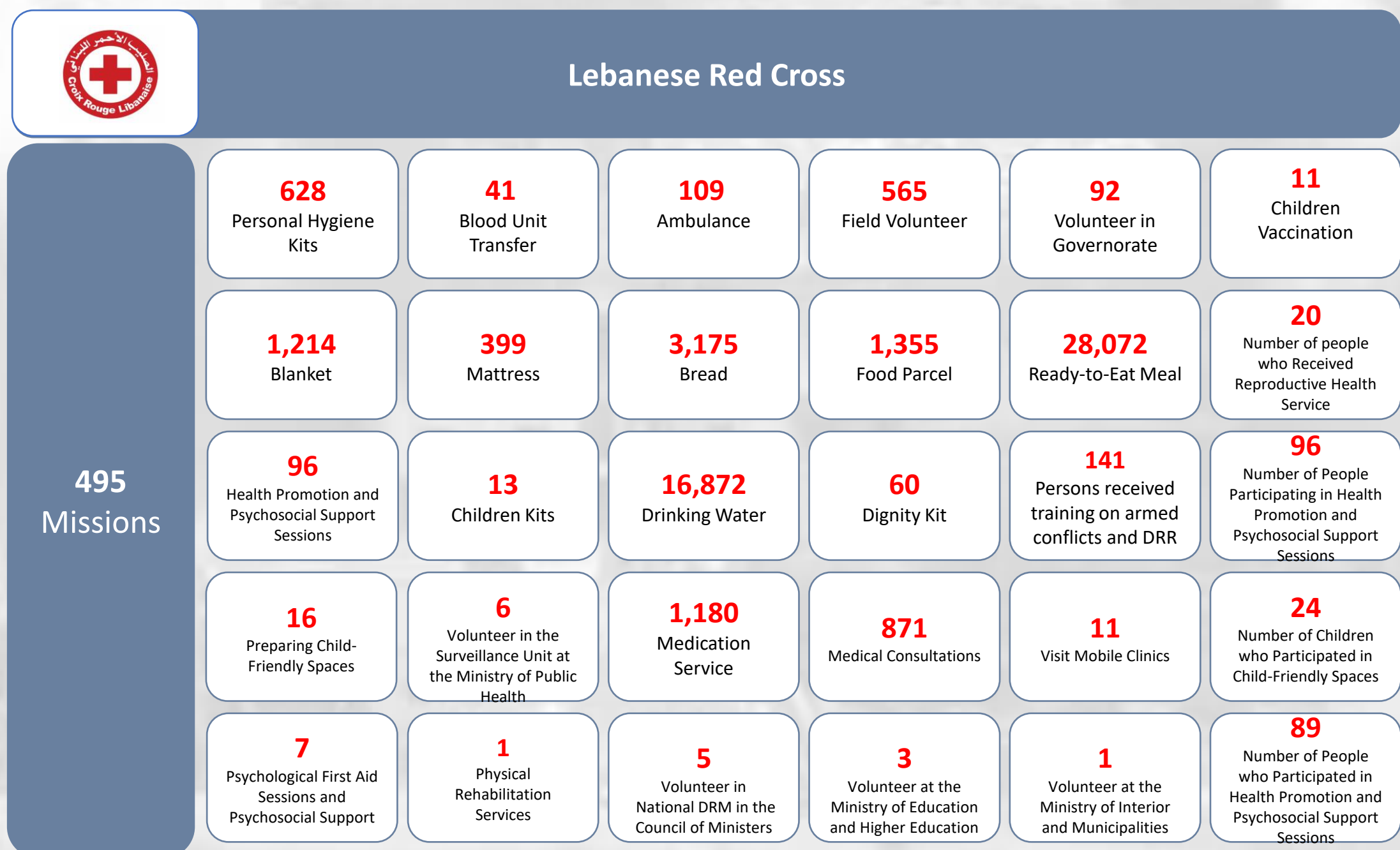
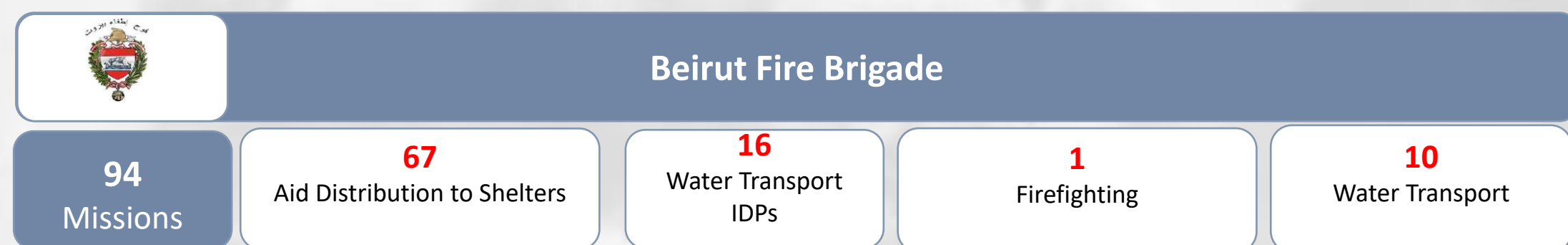


## NATIONAL PREPAREDNESS & RESPONSE PLAN

At the early beginnings of the aggressions, the Lebanese Government through the National DRR Committee to Coordinate Preparedness and Response, in accordance with the National Response Framework, identified the key focus areas of its national preparedness and response plan. This plan aims to mitigate the impact of hostilities in South Lebanon and establish preparedness measure based on potential scenarios.



## RESPONSE OF OFFICIAL DEPARTMENTS (FOR THE LAST 24 HOURS):



## EXPECTED HUMANITARIAN AND RELIEF AID TO LEBANON

Donor	Date of Arrival	Type of Aid
Saudi Arabia x8	30/10/2024 – 13/11/2024	Humanitarian Aid
Saudi Arabia x4	10/11/2024 – 30/11/2024	Humanitarian Aid to the HRC
United Arab Emirates	07/11/2024	Humanitarian Aid to the HRC
United Arab Emirates	07/11/2024	Humanitarian Aid
Kuwait	6-7-9/11/2024	Humanitarian Aid to the Lebanese Government

[Download here the list of countries that have provided international aid to Lebanon since September 25, 2024](#)

## COORDINATION AND INTERNATIONAL SUPPORT THROUGH THE UNITED NATIONS ORGANIZATIONS:

A summary of the humanitarian assistance provided to IDPs in various Lebanese regions within the joint response plan with the United Nations organizations in Lebanon according to information received as of **November 6, 2024**, from the following organizations:

UNICEF	UNHCR	UNDP	WFP	WHO	OCHA	IOM	UNRWA	UNFPA	UNHABITAT
<b>Sites</b>		<b>1543</b>			<b>Partners</b>			<b>129</b>	

Sector		Total
Basic Assistance	Pillows, blankets, mattresses, clothes, light bulbs, cooking utensils, vacuums, etc.	<b>430,341</b> items were distributed in collective shelters benefiting <b>192,817</b> individuals
Child Protection	Awareness sessions with parents	<b>49,541</b>
Food Security	Individuals received food assistance in the form of bread, ready-to-eat meals, food rations, hot meals	<b>5.5 million</b> meals, including <b>4.8 million</b> hot meals and <b>683,000</b> cold meals in <b>969</b> centers <b>211,967</b> bread packs in <b>478</b> centers <b>220,867</b> ready-to-eat meals in <b>471</b> centers <b>141,895</b> food parcels for <b>59,970</b> individuals in <b>257</b> centers and <b>81,925</b> out-of-center parcels <b>240,459</b> individuals benefited from emergency cash assistance under the National Program for the Poorest Families
GBV	Personal Care Kit for Women and Girls	<b>58,460</b>
Health	Medications, health consultations, etc.	<b>73,520</b>
Nutrition	Nutrient supplements for children and women	<b>33,052</b>
Protection	Community centers open and support to individuals and communities related to protection services	<b>17,893</b>
Shelter	Shelters surveyed and rehabilitated	<b>531</b> shelters were surveyed / Rehabilitation is ongoing in <b>100</b> shelters Rehabilitation has been completed in <b>57</b> shelters
WASH	Drinking water, WaSh in-kind Kits, Access to clean water (Drinking water and for domestic use), wastewater desludging, Installation of new portable Showers and Toilets.	<b>972</b> centers reached within the sector <b>99,760</b> kits, including <b>73,604</b> hygiene kits. <b>1,502,000</b> liters of drinking water <b>32,563</b> cubic meters of water for domestic use <b>986</b> cubic meters of wastewater discharged <b>401</b> new portable showers installed and <b>61</b> additional toilets and <b>129</b> water heaters.
Education	Affected children reached with student kits and/or learning materials, non-specialized PSS and SEL activities, School kits and/or learning materials	<b>38,160</b>
Social Stability and Livelihood	Equipment	<b>516</b>