

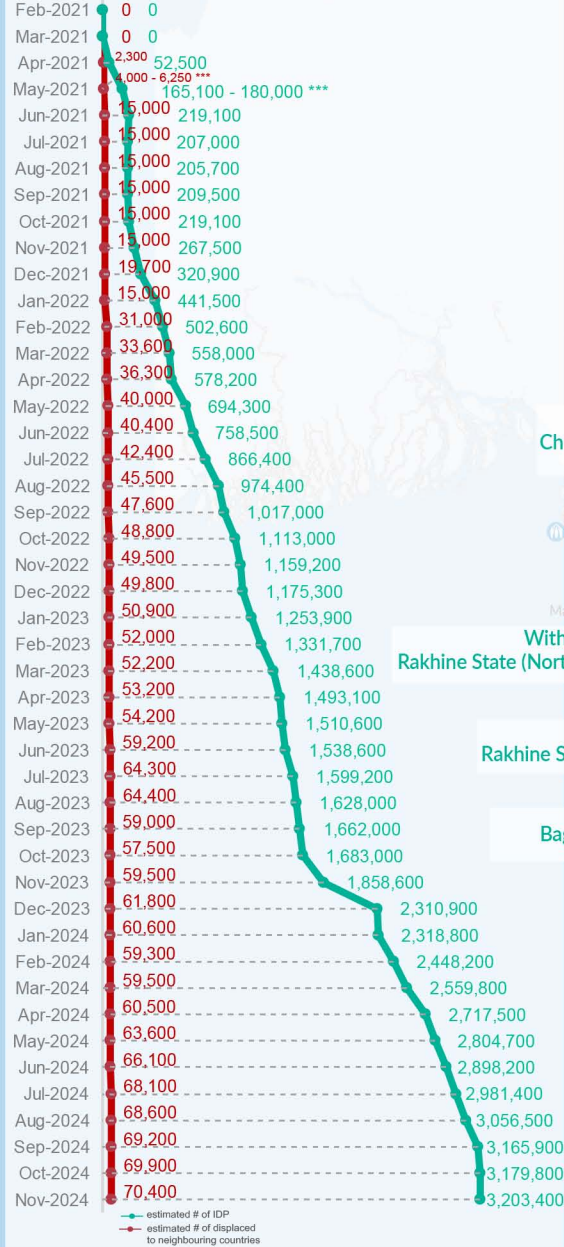
Key figures

Estimated # of IDPs → 3,203,400

Estimated # of displaced to neighbouring countries → 70,400

Source : UN in Myanmar

Estimated displacement figures by Month



*140,400 persons are displaced by armed conflict in neighbouring Kayah State while 4,600 persons are displaced by inter-EAO conflict between SSPP and RCSS.

**UN Estimates

***Range of figures was used while data collection was in progress.

Estimated internal displacement within Myanmar since 1 February 2021 (rounded to the nearest hundred)

Estimated displacement to neighbouring countries since 1 February 2021, who remain displaced (rounded to the nearest hundred)

- IDP unplanned settlement (pre-1 Feb 2021)
- IDP Center (pre-1 Feb 2021)
- IDP spontaneous location (pre-1 Feb 2021)
- IDP planned settlement (pre-1 Feb 2021)
- Temporary shelter for displaced people from Myanmar
- Refugee, planned settlement
- States/Provinces with new arrivals
- International boundaries
- UNHCR Regional Bureau
- UNHCR Multi-country office
- UNHCR Country Office
- UNHCR Sub-Office
- UNHCR Field Office
- UNHCR Field Unit
- UNHCR Liaison Office

The boundaries and names shown and the designations used on this map do not imply official endorsement or acceptance by the United Nations

Key figures


3,480,900

Estimated total IDPs within Myanmar

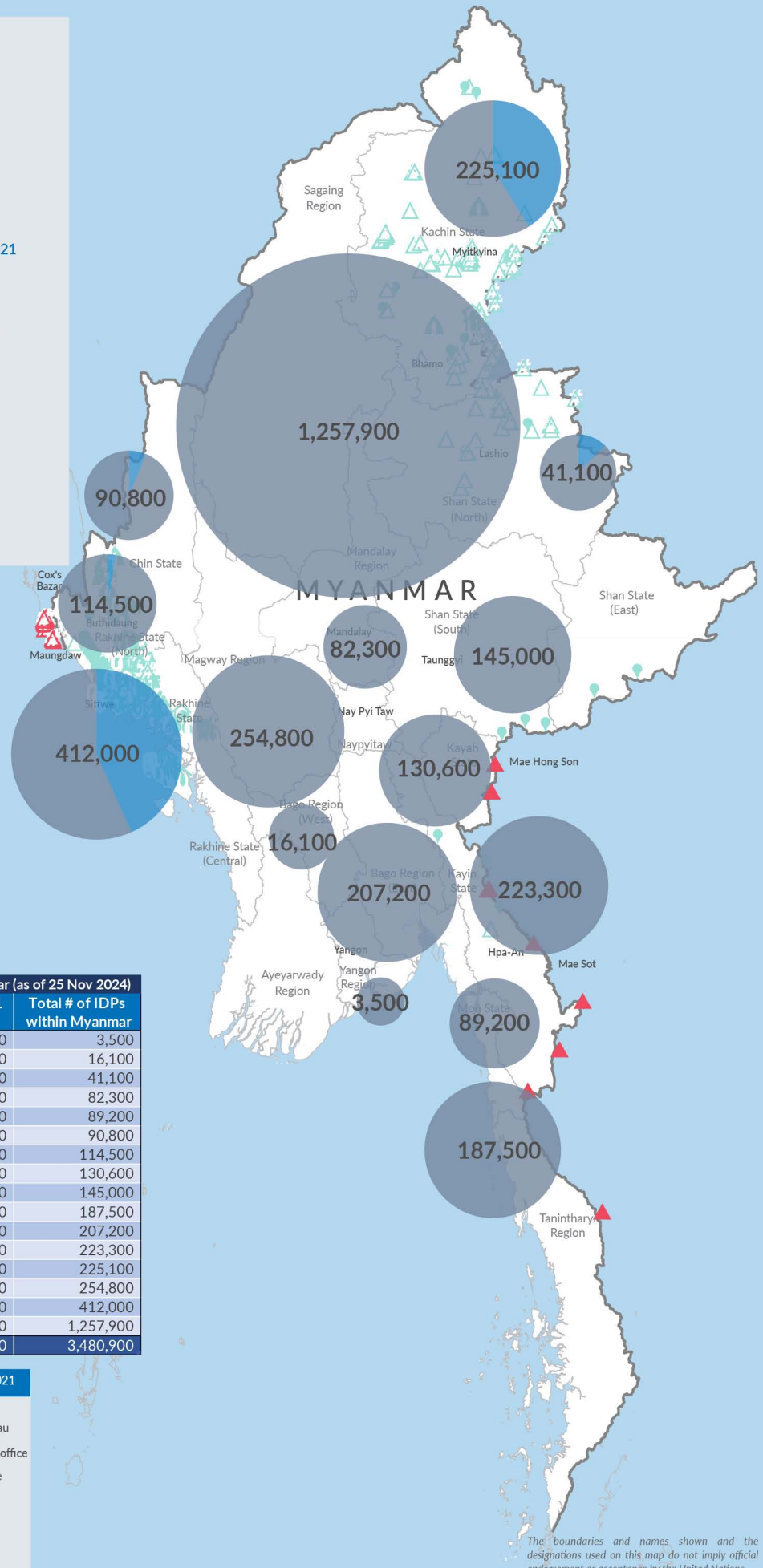

277,500
 Estimated # of IDPs displaced prior to 1 Feb 2021
 (As of 30 Jun, 2024)


3,203,400
 Estimated # of IDPs displaced post 1 Feb 2021
 (As of 25 Nov, 2024)

 Prior to 1 Feb 2021

 Post 1 Feb 2021

Source : UN in Myanmar



Estimated total internally displaced person (IDPs) within Myanmar (as of 25 Nov 2024)

State/Region	Prior to 1 Feb 2021 IDPs	Post 1 Feb 2021 IDPs	Total # of IDPs within Myanmar
Yangon Region	-	3,500	3,500
Bago Region (West)	-	16,100	16,100
Shan State (North)	7,700	33,400	41,100
Mandalay Region	-	82,300	82,300
Mon State	-	89,200	89,200
Chin State	4,500	86,300	90,800
Rakhine State (North)	3,800	110,700	114,500
Kayah State	-	130,600	130,600
Shan State (South)	-	145,000	145,000
Tanintharyi Region	-	187,500	187,500
Bago Region (East)	-	207,200	207,200
Kayin State	-	223,300	223,300
Kachin State	83,900	141,200	225,100
Magway Region	-	254,800	254,800
Rakhine State (Central)	177,600	234,400	412,000
Sagaing Region	-	1,257,900	1,257,900
Grand Total	277,500	3,203,400	3,480,900

Estimated internal displacement within Myanmar Pre+Post 1 February 2021 (rounded to the nearest hundred)

-  IDP unplanned settlement (pre-1 Feb 2021)
-  IDP Center (pre-1 Feb 2021)
-  IDP spontaneous location (pre-1 Feb 2021)
-  IDP planned settlement (pre-1 Feb 2021)
-  Temporary shelter for displaced people from Myanmar
-  Refugee, planned settlement
-  International boundaries
-  UNHCR Regional Bureau
-  UNHCR Multi-country office
-  UNHCR Country Office
-  UNHCR Sub-Office
-  UNHCR Field Office
-  UNHCR Field Unit
-  UNHCR Liaison Office

The boundaries and names shown on this map do not imply official endorsement or acceptance by the United Nations