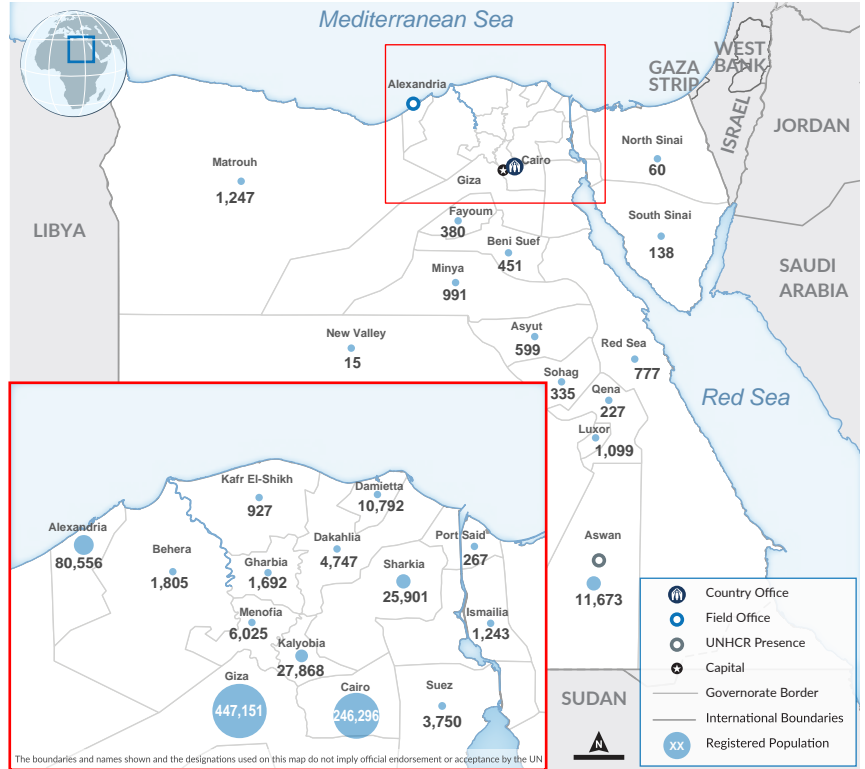
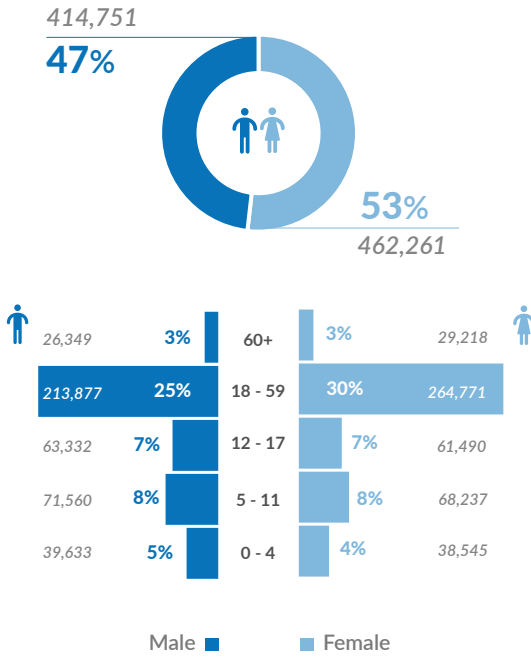
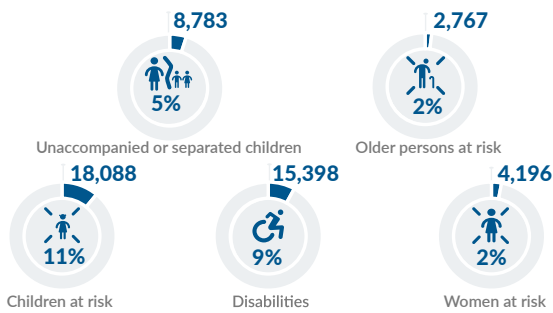




Age & gender of registered population



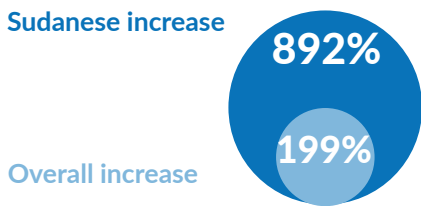
Persons with specific needs*



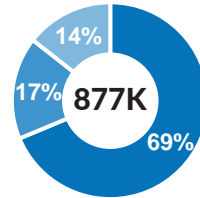
*Individuals who may face particular vulnerabilities and barriers to access services and protection, due to factors such as age, disability, health conditions, or other vulnerabilities. For more information please click on the link [here](#)

Population growth

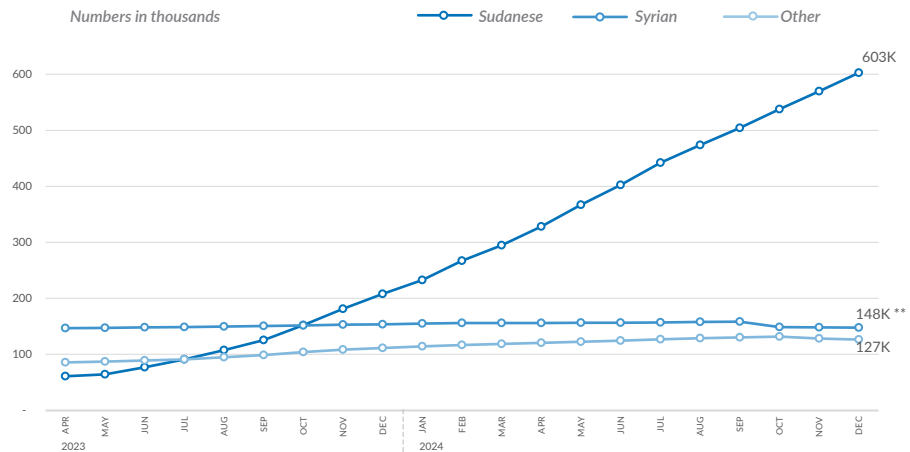
Percentage growth in Sudanese refugee numbers versus all nationalities between 31 March 2023 (pre Sudan crisis) and 31 December 2024.



Population by nationality



Trend of population by nationality



**Syrian refugee numbers dropped by 9,468 in October 2024 as UNHCR resumed inactivating cases of those who did not renew their documents. This process had been paused earlier due to the registration upscaling measures necessitated by the Sudan emergency response.

UNHCR is grateful for the contributions from its donors

