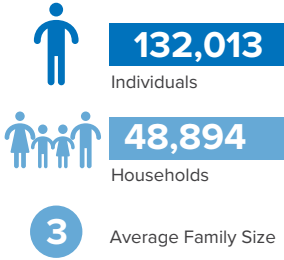


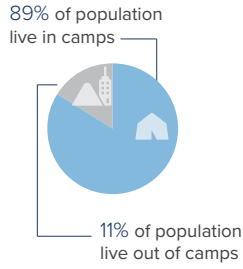
# Eritrean Refugees Overview in Sudan

as of 31 December 2024

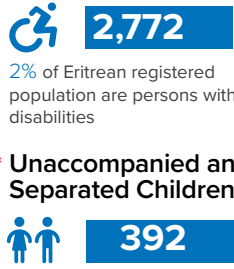
## Eritrean Refugees and Asylum-seekers



## Population Distribution



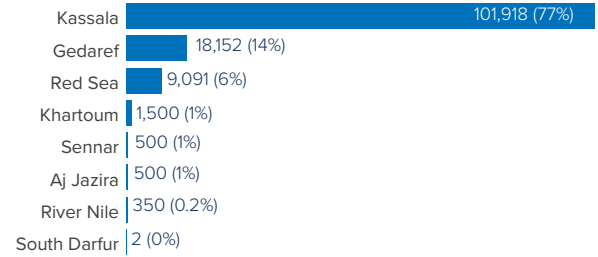
## Persons With Disabilities



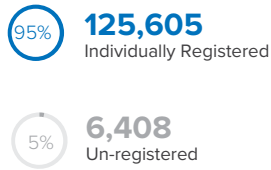
Despite the ongoing conflict that began in April 2023, Sudan continues to host a substantial number of refugees, totaling 837,966 as of December 2024, Eritrean refugees represent (15.8%) of this total population.

The conflict has also led to internal displacement, with 266,149 refugees self-relocating within Sudan, primarily moving from Khartoum to other states. In terms of living conditions of the Eritrean refugees, 89% of the refugees are accommodated in camps, while the remaining 11% live outside of these facilities. The refugee population is almost evenly split in terms of gender, with females accounting for 54% and males making up the remaining 46%.

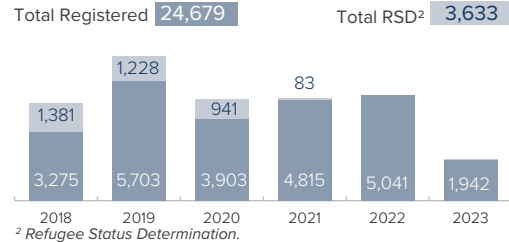
## Eritrean Refugees and Asylum-seekers Per State



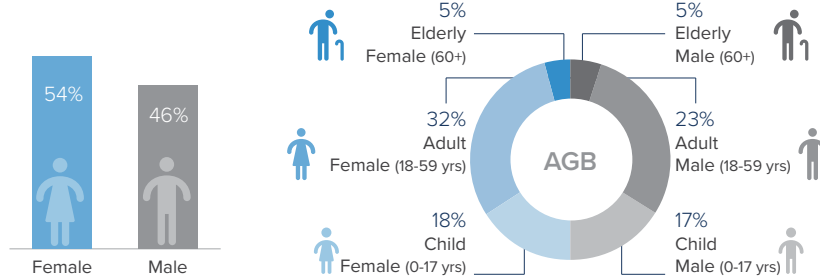
## Registration Status



## Registration Statistics Since 2018



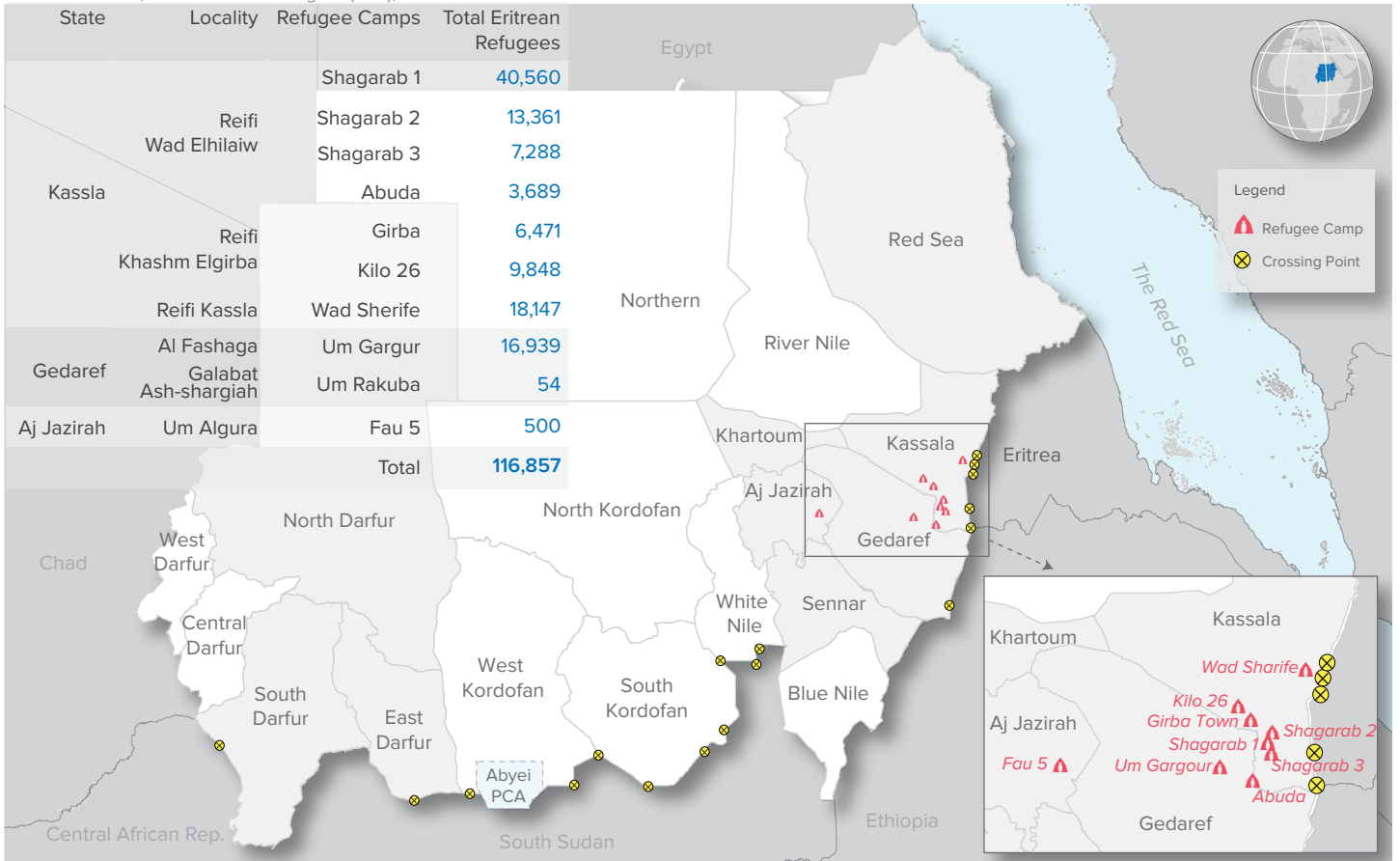
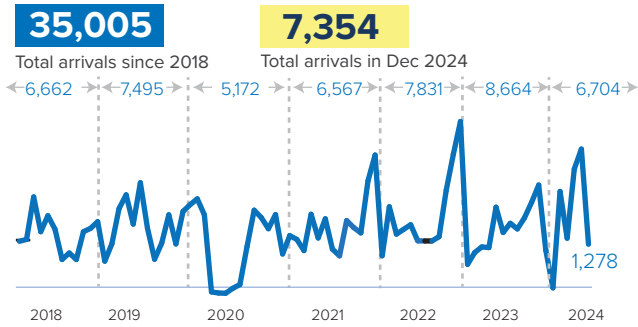
## Age-gender Breakdown<sup>3</sup>



<sup>3</sup> Population distribution statistics are based on registered individuals only.  
\* Registration team conducted verification/revision exercise of UASC figures, all cases exceed 18 year old been excluded.

Sources: UNHCR, Commission of Refugees (CoR), UNICEF

## New Arrivals Trends (2018 - 2024)



The boundaries and names shown and the designations used on this map do not imply official endorsement or acceptance by the United Nations.  
Abyei region: Final status of the Abyei area is not yet determined.

