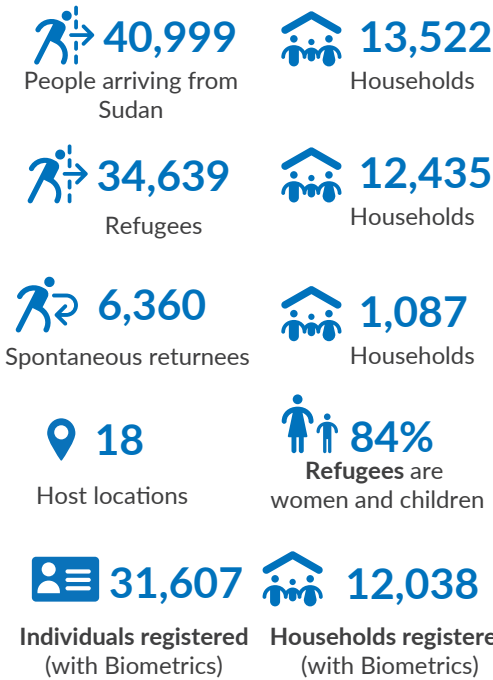


Key figures

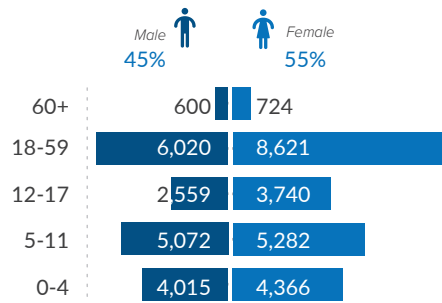


Context

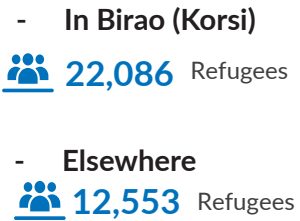
Since mid-April 2023, following the crisis that erupted in Sudan between the Sudanese Armed Forces (SAF), and the Rapid Support Forces (RSF), the Central African Republic (CAR) has been receiving thousands of Sudanese refugees through several border crossings, majority coming through Am-dafock, in the Vakaga region of CAR. UNHCR and the National Commission for Refugees (CNR) are coordinating border monitoring, reception, screening, and registration of new arrivals. Along with the CNR and the humanitarian community (including UN Agencies, International and Local NGO's) UNHCR has been providing lifesaving assistance including protection services, food, CRIs, emergency shelter, health care and education reaching 22,086 refugees in Korsi, a settlement identified by the government in Birao town, Vakaga Prefecture, 65 km from Am-dafock border. Some 12,553 Sudanese refugees are also scattered in hard-to reach locations in Vakaga, Bamingui-Bangoran, Haute-Kotto, Ouaka, Mbomou, Haut-Mbomou prefectures and in need of assistance and protection. In addition, over 6,360 Central Africans who lived as refugees in Darfur have been forced to return to CAR in adverse conditions.



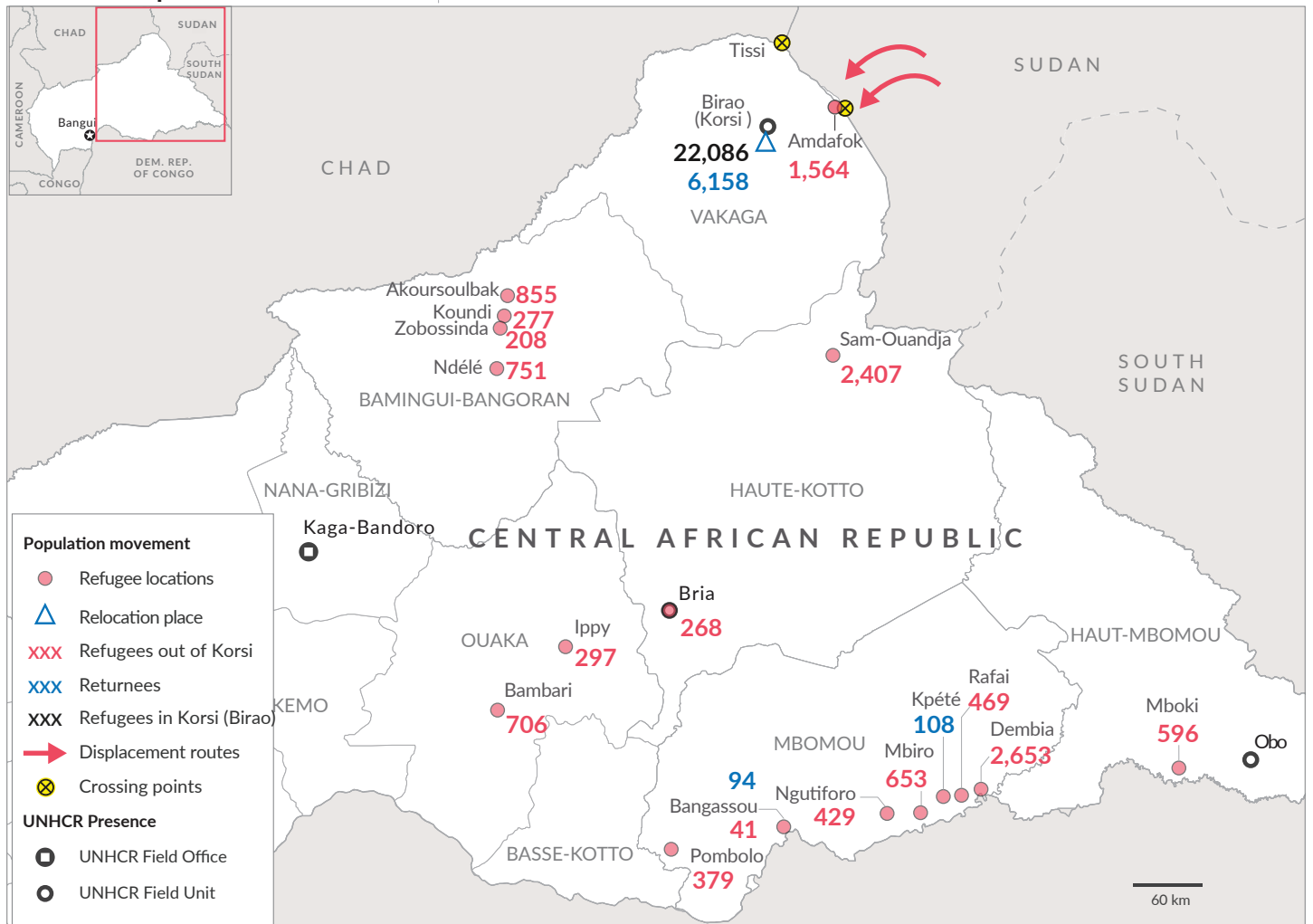
Total number by age, sex breakdown



REFUGEES PRESENCE

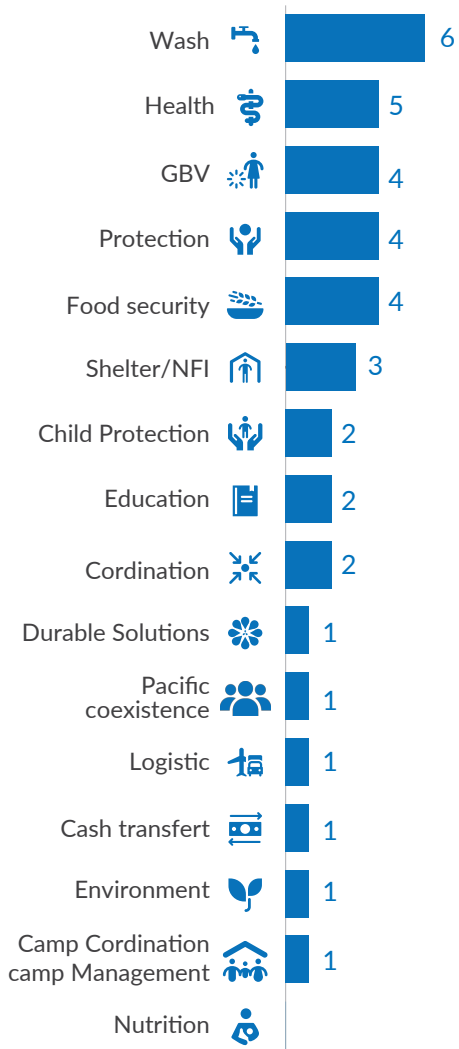


Situation map



The boundaries and names shown and the designations used on this map do not imply official endorsement or acceptance by the United Nations
Sources : UNHCR, Central African Republic Gouvernement

Number of organizations by sector



Operational presence

 1

Location with actors presence

 15

Sectors intervention

 20

Organizations represented

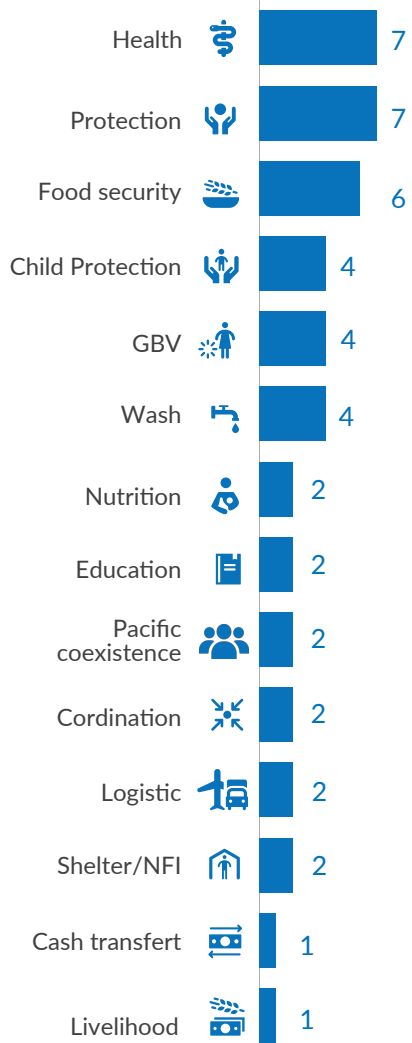


- UN Agencies: 8
- International NGO: 6
- National NGO: 3
- Gouvernment Services: 2

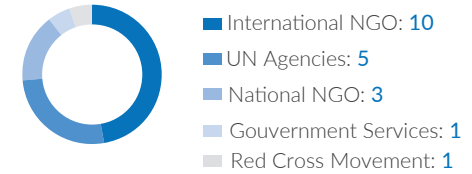
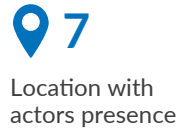
Operational presence of actors by sector

Actor	Shelter/NFI	Wash	Health	Protection	NFI	Education	Environment	GBV	Food security	Durable Solutions	Logistic	Cash transfert	Environment	Protection	Shelter/NFI
ANEA															
CIAUD/UNHCR															
AURD/ONU FEMMES															
CNR															
FAO															
IMC															
CIAUD/UNHCR															
NOURRIR/UNHCR															
OHGDS															
OIM															
OMS															
PAM															
TRIANGLE/UNICEF															
UNFPA															
UNHCR															
WHH															
WORLD VISION															
CSSI															

Number of organizations by sector



Operational presence



Operational presence of actors by sector

Organization	Shelter/NFI	Wash	Health	Protection	NFI	Education	Nutrition	Food Security	Child Protection	GBV	Logistic	Coordination	Other
ALIMA													
APADE													
CICR													
CNR													
CONCORDIS													
CIAUD													
DCA													
CIAUD													
IRC													
OIM													
OMS													
PAM													
PU													
OHDGS													
UNHCR													
UNICEF													
INTERSOS													
VERCA													
WHH													
CSSI													
IMC													

