

SUDAN COUNTRY REFUGEE RESPONSE PLAN JANUARY-DECEMBER 2025



892K

PROJECTED REFUGEE
POPULATION



165.6K

PROJECTED ASSISTED
HOST COMMUNITY
POPULATION



633.7M

TOTAL FINANCIAL
REQUIREMENTS



34

PARTNERS

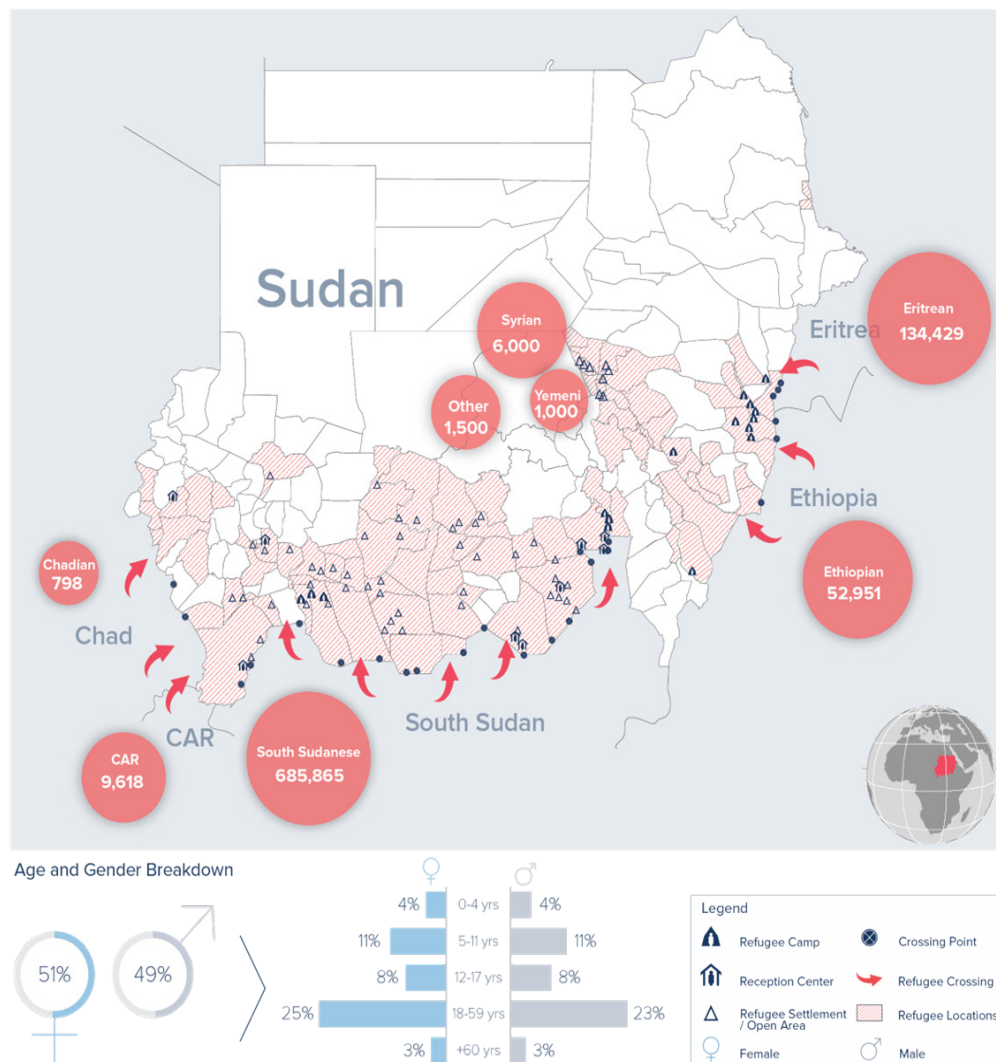
Executive Summary

The **2025 Sudan Country Refugee Response Plan (CRRP)** outlines a coordinated strategy to address the urgent needs of nearly **892,000 refugees and asylum-seekers** and **165,585 host community** members amid Sudan's escalating humanitarian crisis. Bringing together **34 partners**, including UN agencies, international and national NGOs, the CRRP, developed in close cooperation with the Sudan Commission for Refugees (COR), seeks **\$633.7 million** to support essential services across protection, education, health, nutrition, food security, livelihoods, WASH, energy, environment, and shelter. Key priorities include ensuring access to asylum, legal assistance, food assistance, healthcare, education, and livelihood opportunities, while integrating gender-sensitive programming, climate action, and cash-based interventions.

The CRRP provides **strategic direction for the 2025 refugee response** across all sectors and confirms the refugee coordination structure in Sudan to ensure an efficient and inclusive response. It promotes stronger linkages between humanitarian and development actors to enhance self-reliance, resilience-building, and long-term solutions for refugees and host communities. By strengthening partnerships and aligning humanitarian interventions with sustainable development efforts, the CRRP aims to bridge immediate needs with durable solutions that improve livelihoods and social cohesion.

The CRRP calls for international support and collaboration to sustain life-saving assistance and build long-term resilience for displaced populations and host communities in Sudan.

Projected Refugee Population



Strategic Objectives:

- 1. Strengthen the protective environment for refugees and asylum-seekers.**
- 2. Enable access to timely protection interventions and life-saving assistance for refugees, asylum-seekers and hosting communities.**
- 3. Foster self-reliance through livelihoods and promote inclusion, while avoiding parallel services provisions to refugees and host populations.**

The 2025 CRRP prioritizes life-saving assistance and protection for refugees, asylum-seekers, and host communities while ensuring compliance with international protection standards. Strategic Objective 1 (SO1) focuses on safeguarding refugees' rights under national, regional, and international laws, including in conflict-affected areas. Strategic Objective 2 (SO2) aims to deliver multi-sector humanitarian aid in overcrowded refugee camps and conflict zones, addressing critical needs based on security and access conditions. Strategic Objective 3 (SO3) promotes self-reliance and socio-economic inclusion, particularly in stable areas, while the overall response prioritizes protection and essential services for the 65.5% of refugees living in camp settings.

Prioritized response:

- Strengthen access to asylum and uphold the non-refoulement principle to ensure the safety and rights of refugees.
- Expand registration and issuance of refugee ID cards/photo slips to improve access to rights and essential services.
- Strengthen family reunification and support for unaccompanied and separated children (UASC) through case management and alternative care arrangements.
- Improve basic service delivery across all sectors in camp and camplike settings to reach minimum standards
- Enhance GBV prevention and response services, including access to safe spaces, dignity kits, and survivor-centred support.
- Reopen schools and non-formal learning centres to restore access to education for refugee children.
- Improve access to primary and secondary healthcare, including reproductive health services, to address urgent medical needs.
- Provide in-kind and cash-based food assistance, prioritizing areas at Risk of Famine to prevent food insecurity
- Ensure access to safe water by rehabilitating and solarizing water systems for sustainability.
- Provide energy-efficient stoves and alternative fuel sources to reduce deforestation and promote environmental sustainability.

Contact the Refugee Consultation Forum (RCF)

Gavan Kelly, / Inter-Agency Coordination Officer, kellyg@unhcr.org

Eunice Ohanusi / Associate Reporting Officer, ohanusie@unhcr.org +254114768457

<https://data2.unhcr.org/en/country/sdn>

