

March 2025

KEY FIGURES ON FORCIBLY DISPLACED PERSONS

1,906,998

Total

1,355,992

Refugees

7,807

Asylum seekers

225,689

Internally displaced persons (Lake)

317,510*

Returned migrants(Lake)

Others keys figures

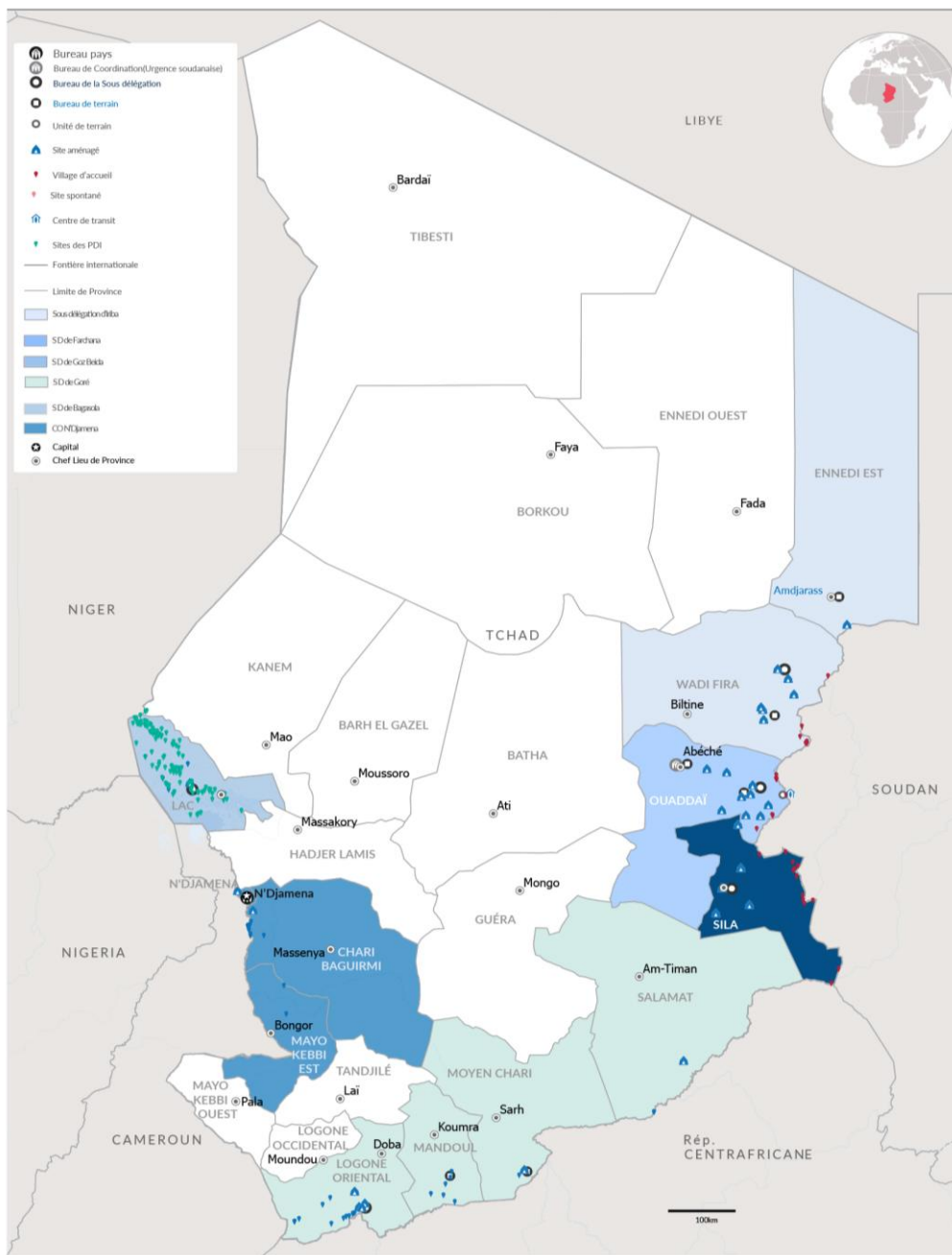
17,708

Cameroonian refugees assisted for voluntary repatriation

772,970

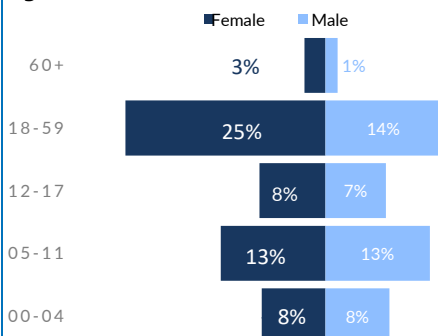
New arrivals from Sudan since April 2023

* Returned migrants at risk of statelessness from: Niger, CAR, and Sudan.

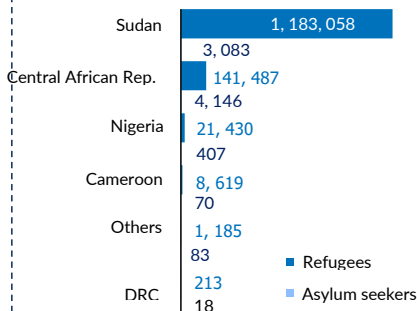


REFUGEES AND ASYLUM SEEKERS

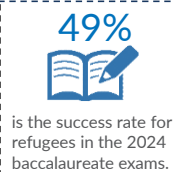
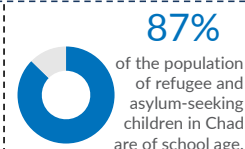
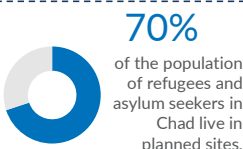
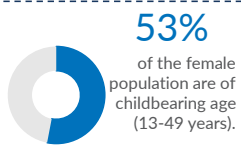
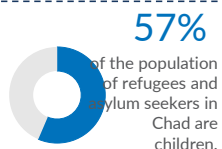
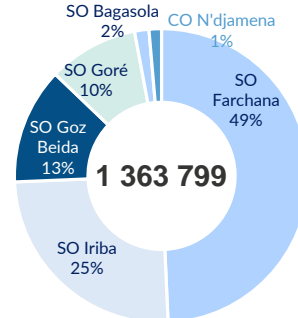
Age Cohort



By Country of Origin



By Sub Office



Refugees

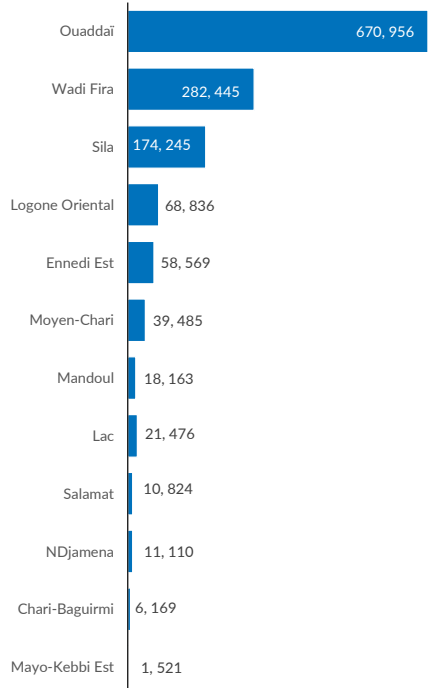


1, 363, 799
INDIVIDUALS



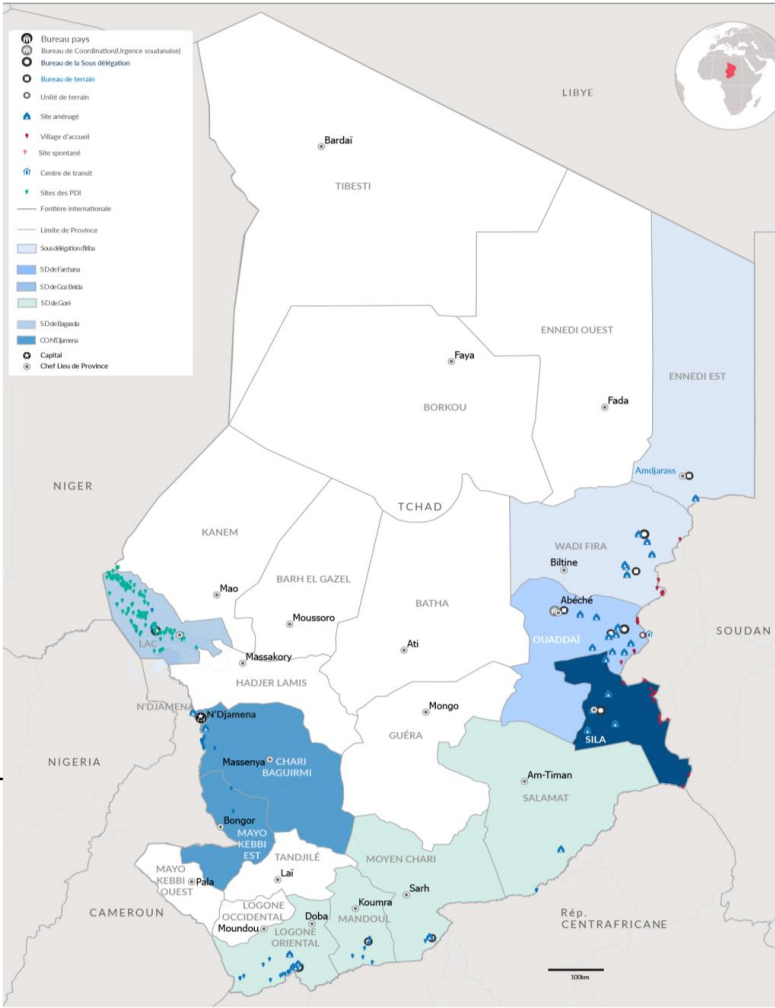
327, 341
HOUSEHOLDS

By Province



SO Bagasola	
Dar es Salam*	18,386
Bol	1,600
NGouboua	513
Kiskawa	445
Liwa	167
Tchoukoutalia	134
Kiskra	164
Autres	67

BO N'Djamena	
N'Djaména	11,110
Mayo-Kebbi Est	1,521
Chari-Baguirmi	6,169



Abeche Coordination Office
1, 186, 215

SO Iriba	341,014
Touloum*	60,902
Am Nabak*	36,847
Iridimi*	46,152
Border	536
FO Amdjarass	58,569
Oure Cassoni*	58,569
FO Guéréda	138,008
Mile*	60,520
Kounoungou*	28,850
Koursigou*	13,683
Border(Dar Tama)	34,955
SO Farchana	670,956
Farchana*	54,789
Aboutengué*	46,715
Metche*	41,997
Gaga*	39,022
Adre	238,525
Border(Ouaddaï)	26,934
FO Abeche	25,816
Kouchaguine- M.*	17,320
Abéché	8,496
FO Hadjer Hadid	197,158
Bredjing*	56,338
Alacha*	47,601
Traguine*	30,749
Arkoum*	50,313
Dougouï*	12,157
SO Goz Beida	174,245
Goz Amir*	45,647
Zabout*	53,262
Djabal*	37,401
Kerfi	10,731
Border(Sila)	27,204

Principales nationalités(Ref. & ASY)

1, 186, 141

SUDANESE

Essentially located in the 21 planned sites and 1 reception village in the East and in urban areas.

145, 633

CENTRAL AFRICANS

Located in the six camps, sites, and host villages in the South and in urban areas.

21, 837

NIGERIANS

Primarily located in the Dar Es Salam camp and host villages in the Lake Province as well as in urban areas.

8, 689

CAMEROONIANS

Mainly composed of populations who fled intercommunal clashes in the Logone and Chari department in Cameroon. They are located in the two camps around N'Djamena and on the banks of the Logone River.

1, 499

OTHER NATIONALITIES

Outside the major nationalities, there are individuals of various origins: Algeria, Benin, Burkina Faso, Burundi, Côte d'Ivoire, Republic of the Congo, Egypt, Eritrea, Ethiopia, Gabon, Libya, Mali, Islamic Republic of Iran, Rwanda, Senegal, Somalia, South Sudan, Palestine, Yemen.

KEY FIGURES ON THE SUDANESE CRISIS

772, 970 **409, 819**

New arrivals from Sudan 2023.

Sudanese refugees in Chad before the 2023 crisis.

* Planned site