



Mbarara Sub-Office Performance Snapshot

<b>Population</b> Refugees and asylum-seekers	<b>77</b> Partners in Response	<b>09</b> RLOs & CBOs	<b>09</b> Government Partners	<b>05</b> UN Agencies
	<i>On average two performance indicators are reflected per sector against the annual 2024 RRP targets</i>		<b>14</b> National NGOs	<b>40</b> International NGOs

665,240

Refugees and asylum seekers

208,777

Households

Sector of Intervention	Indicator	Achieved	Target
------------------------	-----------	----------	--------

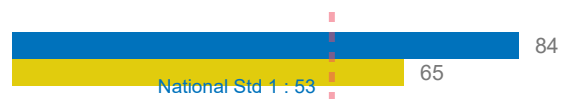
Education



% children enrolled in Primary



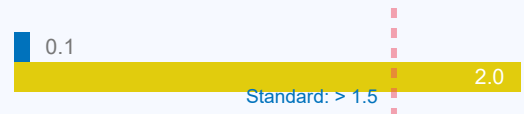
Teacher Pupil ratio (1:65)



Health & Nutrition



Under 5 mortality rate



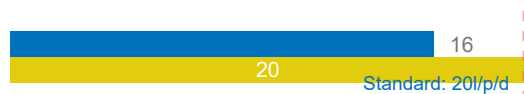
Moderate acute malnutrition recovery rate



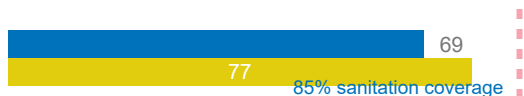
WASH



# of litres per person per day



% household latrine coverage



Energy & Environment



# of hectares of woodlots/plantations established



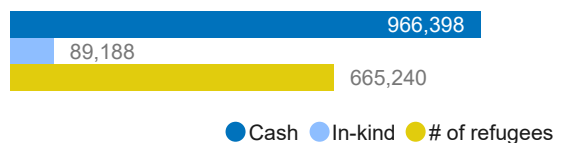
# of HH supported with clean and/or energy efficient technologies for cooking



Food Security



# of refugees and asylum seekers receiving food assistance disaggregated by modality (Cash + In-kind)



Quantity of food provided (Metric Tonnes)



Livelihoods & Resilience



Acres of arable land accessed by refugees



HH having received livelihood support

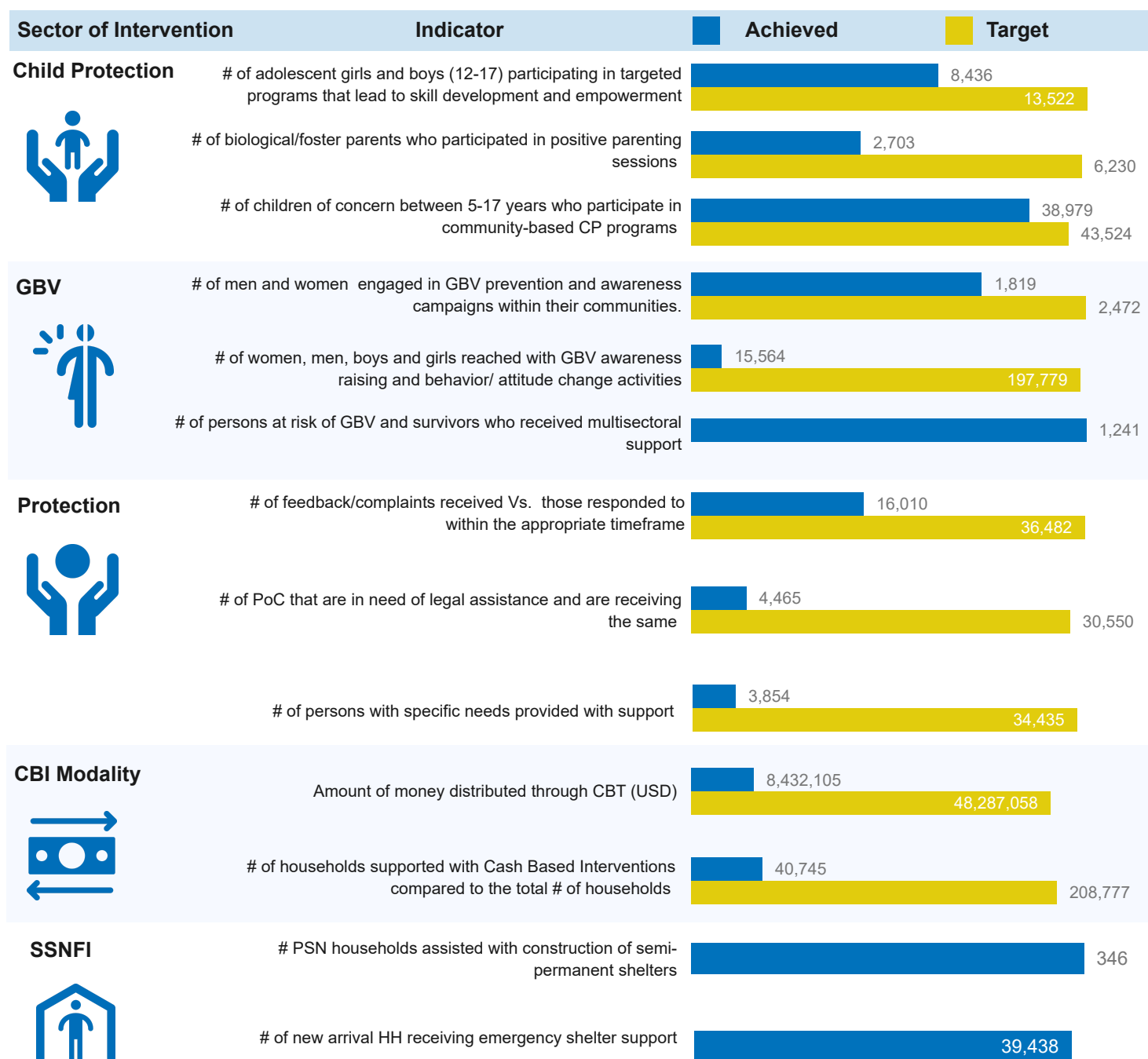


# of men, women, boys and girls trained on financial literacy





Mbarara Sub-Office Performance Snapshot



Partner presence by Q2 2025, UN Agencies and Government

National NGOs

ACORD, AWYAD, KRRC, Nsamizi, Post Bank, Ripple Effect, and TPO

Refugee Led Organizations (RLOs)

Tumaini,YARID

International NGOs

ADRA, AHA, AIRD, Alight, AVSI, CARE, DRC, Equity Bank, FCA, FRC, GNIU, HI, IRC, LWF, MTI, PWJ, SCI, URCS, WCH, and WVI

UN Agencies

IOM, UNFPA, UNHCR, and WFP

Government

Kyegegwa DLG, NFA, and OPM



Kyaka II Performance Snapshot

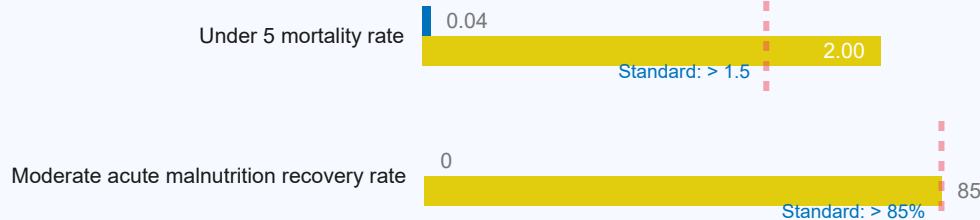
<b>Population</b> Refugees and asylum-seekers	<b>42</b> Partners in Response	<b>1</b> RLOs/CBOs	<b>5</b> Government Partners	<b>4</b> UN Agencies
<b>135,681</b> Refugees and asylum seekers	<i>On average two performance indicators are reflected per sector against the annual 2024 RRP targets</i>		<b>6</b> National NGOs	<b>26</b> International NGOs
<b>35,671</b> Households				

Sector of Intervention	Indicator	Achieved	Target
------------------------	-----------	----------	--------

Education



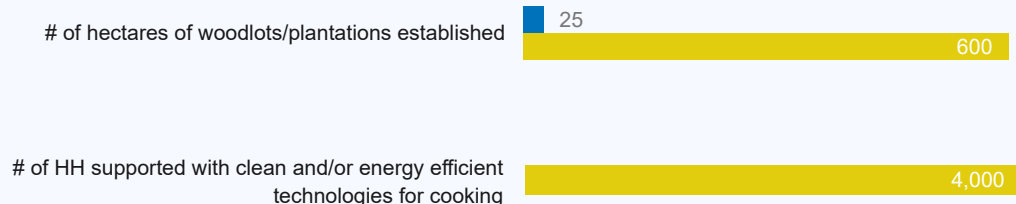
Health & Nutrition



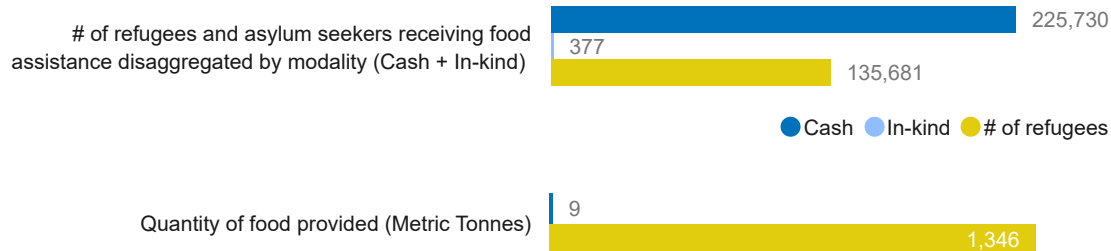
WASH



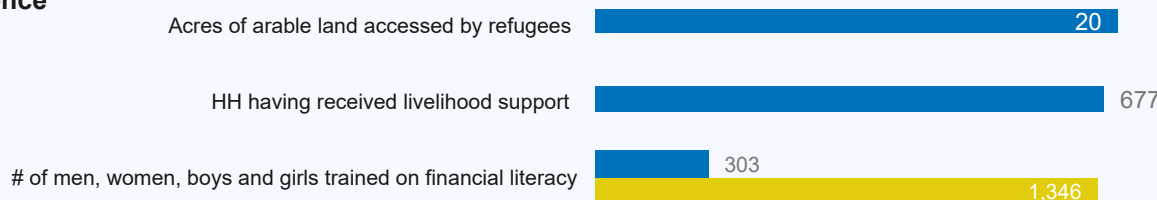
Energy & Environment



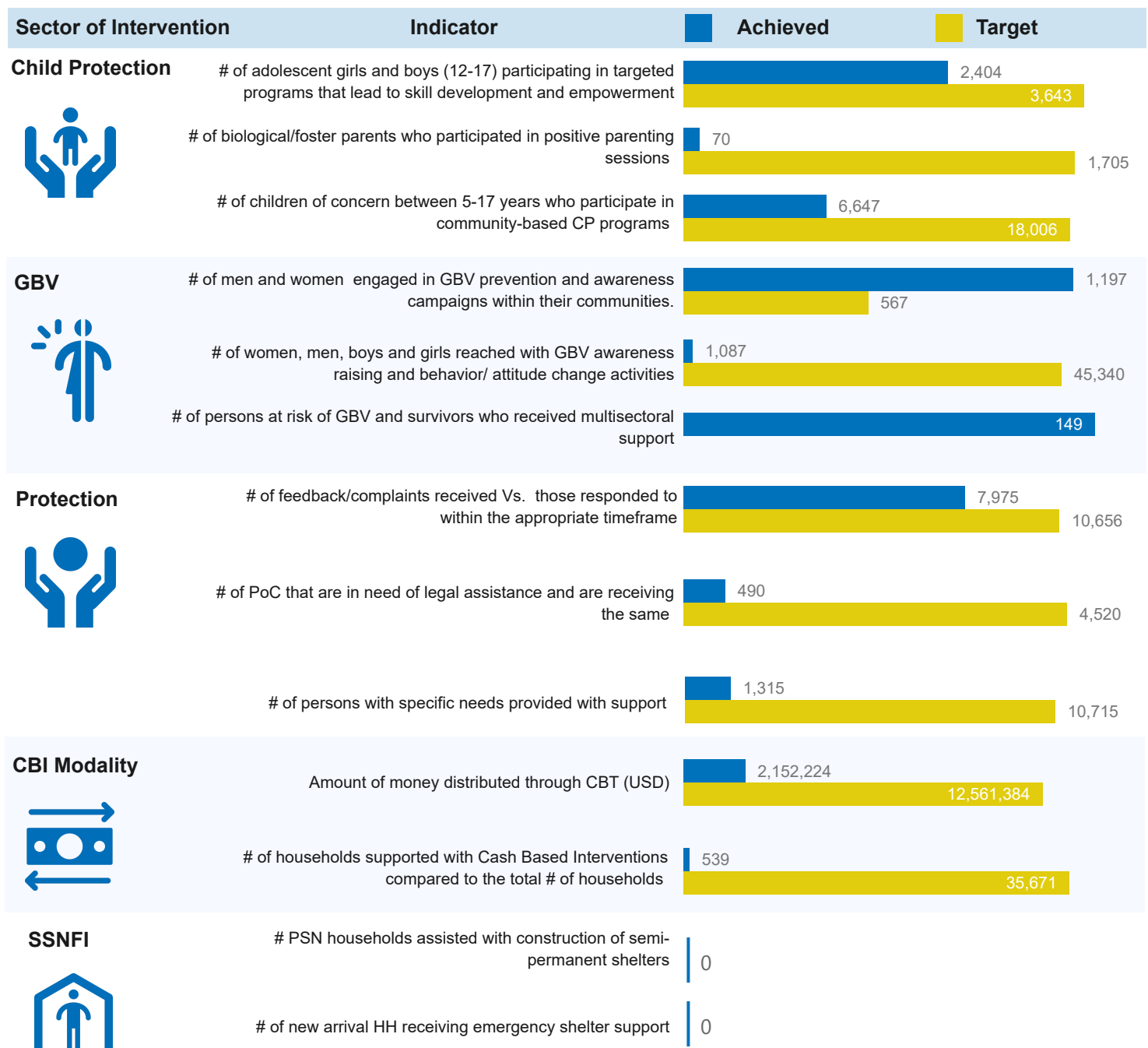
Food Security



Livelihoods & Resilience



Kyaka II Performance Snapshot



Partner Presence by Q2 2025, UN Agencies and Government

National NGOs

ACORD, AWYAD, KRRC, Nsamizi, Post Bank, Ripple Effect, and TPO

Refugee Led Organizations (RLOs)

YARID

International NGOs

ADRA, AHA, AIRD, Alight, AVSI, CARE, DRC, Equity Bank, FCA, FRC, GNIU, HI, IRC, LWF, MTI, PWJ, SCI, URCS, WCH, and WVI

UN Agencies

IOM, UNFPA, UNHCR, and WFP

Government

Kyegegwa DLG, NFA, and OPM



Kyangwali Performance Snapshot

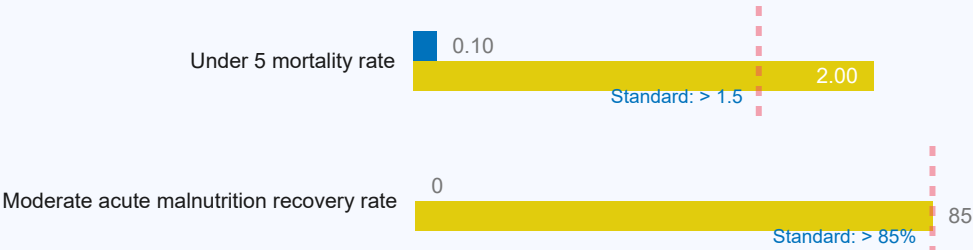
<b>Population</b> Refugees and asylum-seekers	<b>34</b> Partners in Response	<b>0</b> RLOs/CBOs	<b>3</b> Government Partners	<b>3</b> UN Agencies
<b>151,806</b> Refugees and asylum seekers	<i>On average two performance indicators are reflected per sector against the annual 2024 RRP targets</i>		<b>7</b> National NGOs	<b>21</b> International NGOs
<b>45,076</b> Households				

Sector of Intervention	Indicator	Achieved	Target
------------------------	-----------	----------	--------

Education



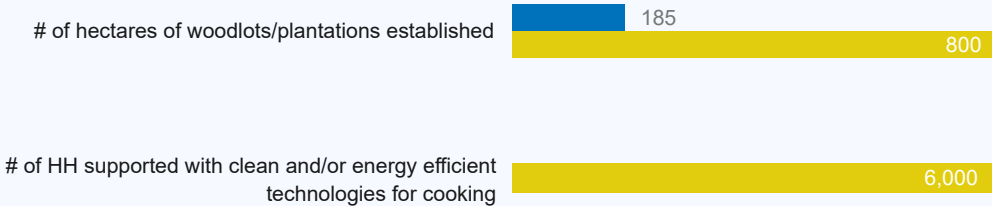
Health & Nutrition



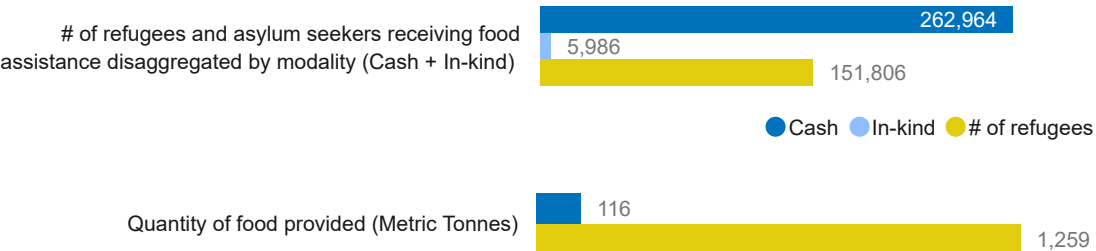
WASH



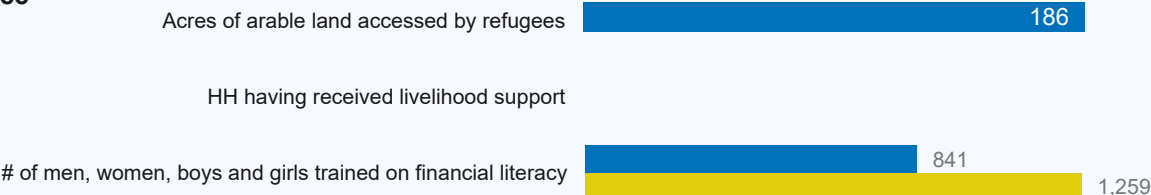
Energy & Environment








Food Security



Livelihoods & Resilience



Kyangwali Performance Snapshot

Sector of Intervention	Indicator	Achieved	Target
<b>Child Protection</b> 	# of adolescent girls and boys (12-17) participating in targeted programs that lead to skill development and empowerment	2,212	3,788
	# of biological/foster parents who participated in positive parenting sessions	1,230	1,768
	# of children of concern between 5-17 years who participate in community-based CP programs	7,845	10,246
<b>GBV</b> 	# of men and women engaged in GBV prevention and awareness campaigns within their communities.	2	610
	# of women, men, boys and girls reached with GBV awareness raising and behavior/ attitude change activities	5,497	48,818
	# of persons at risk of GBV and survivors who received multisectoral support	186	
<b>Protection</b> 	# of feedback/complaints received Vs. those responded to within the appropriate timeframe	1,303	3,156
	# of PoC that are in need of legal assistance and are receiving the same	1,117	7,020
	# of persons with specific needs provided with support	861	10,445
<b>CBI Modality</b> 	Amount of money distributed through CBT (USD)	1,544,889	12,590,189
	# of households supported with Cash Based Interventions compared to the total # of households	5,531	45,076
<b>SSNFI</b> 	# PSN households assisted with construction of semi-permanent shelters	181	
	# of new arrival HH receiving emergency shelter support	1,924	

Partner Presence by Q2 2025, UN Agencies and Government

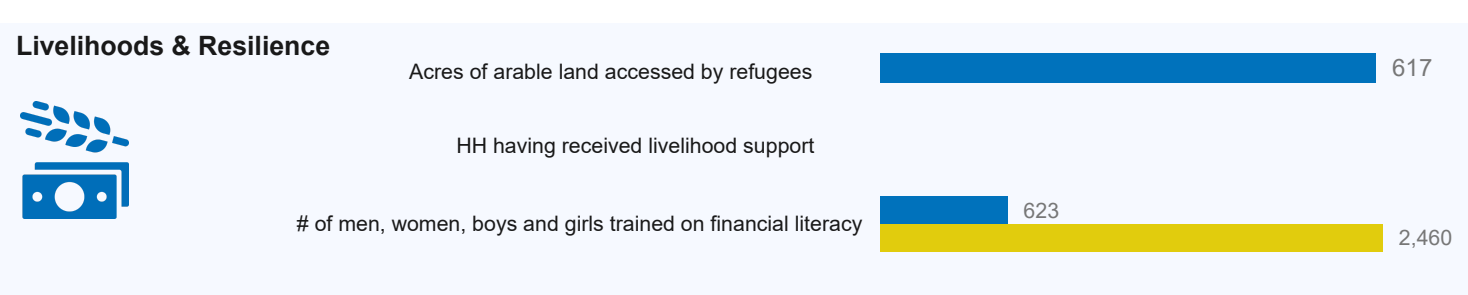
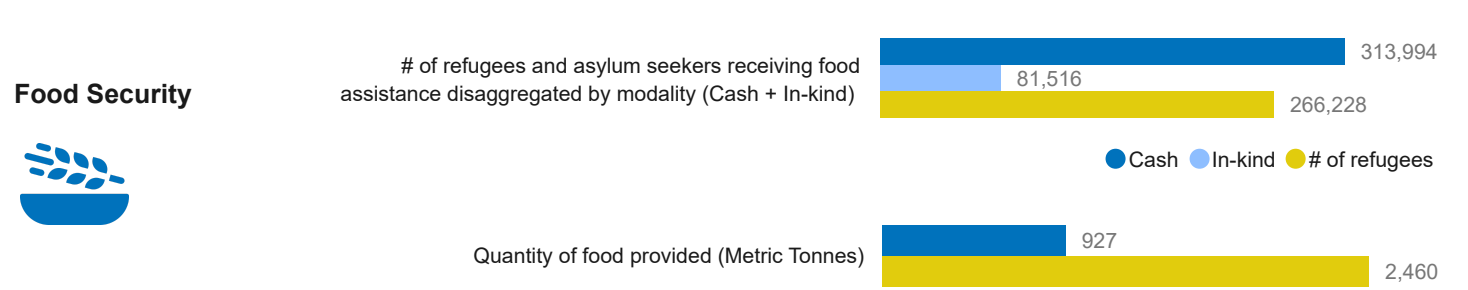
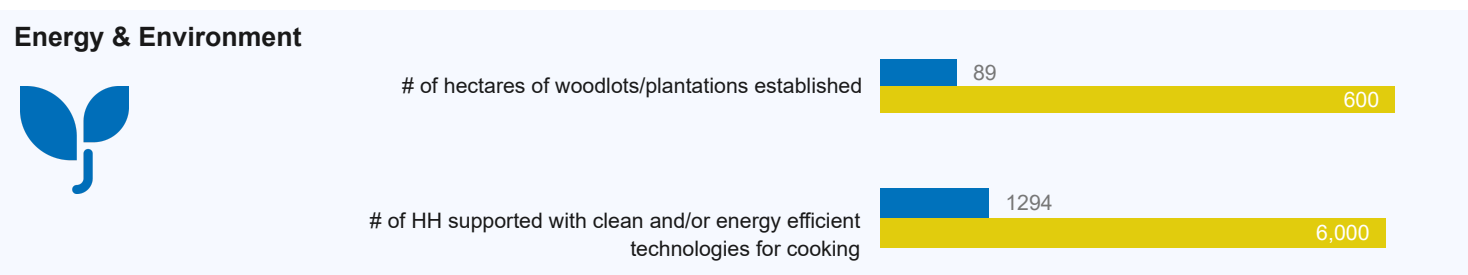
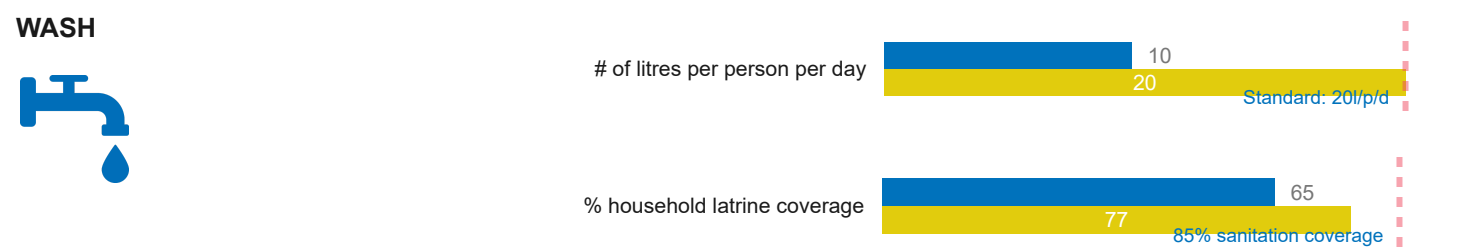
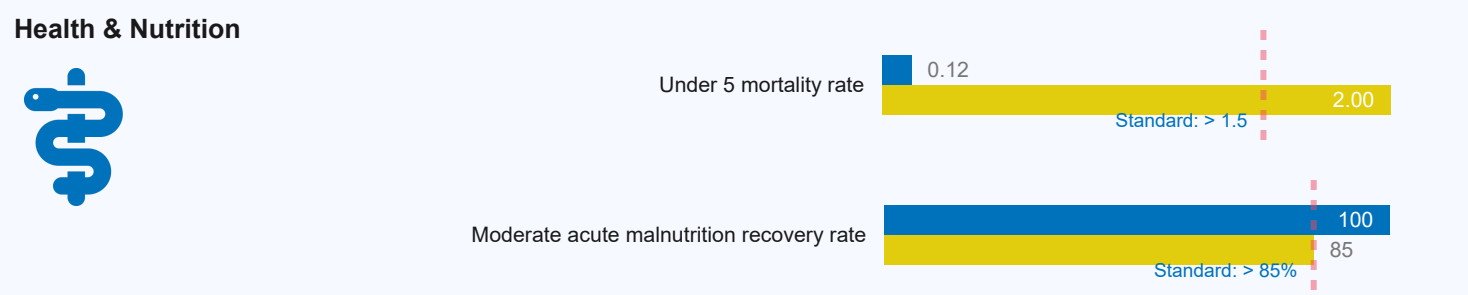
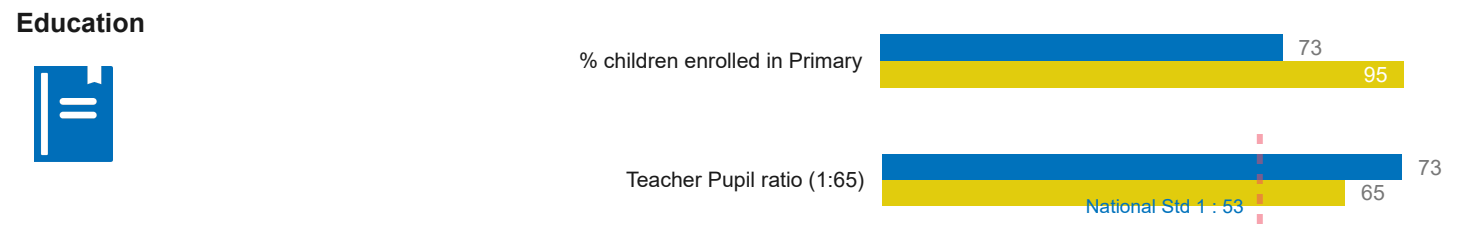
- National NGOs  
HAF Uganda, HFU, Nsamizi, Post Bank, and TPO
- Refugee Led Organizations (RLOs)  
YARID
- International NGOs  
AARJ, ACF, AIRD, Alight, Airtel, AVSI, CARE, CRS, Equity Bank, FRC, HI, LWF, MTI, NRC, SCI, URCS, WCC, and WCH
- UN Agencies  
UNHCR and WFP
- Government  
Kikuube DLG, NFA, and OPM



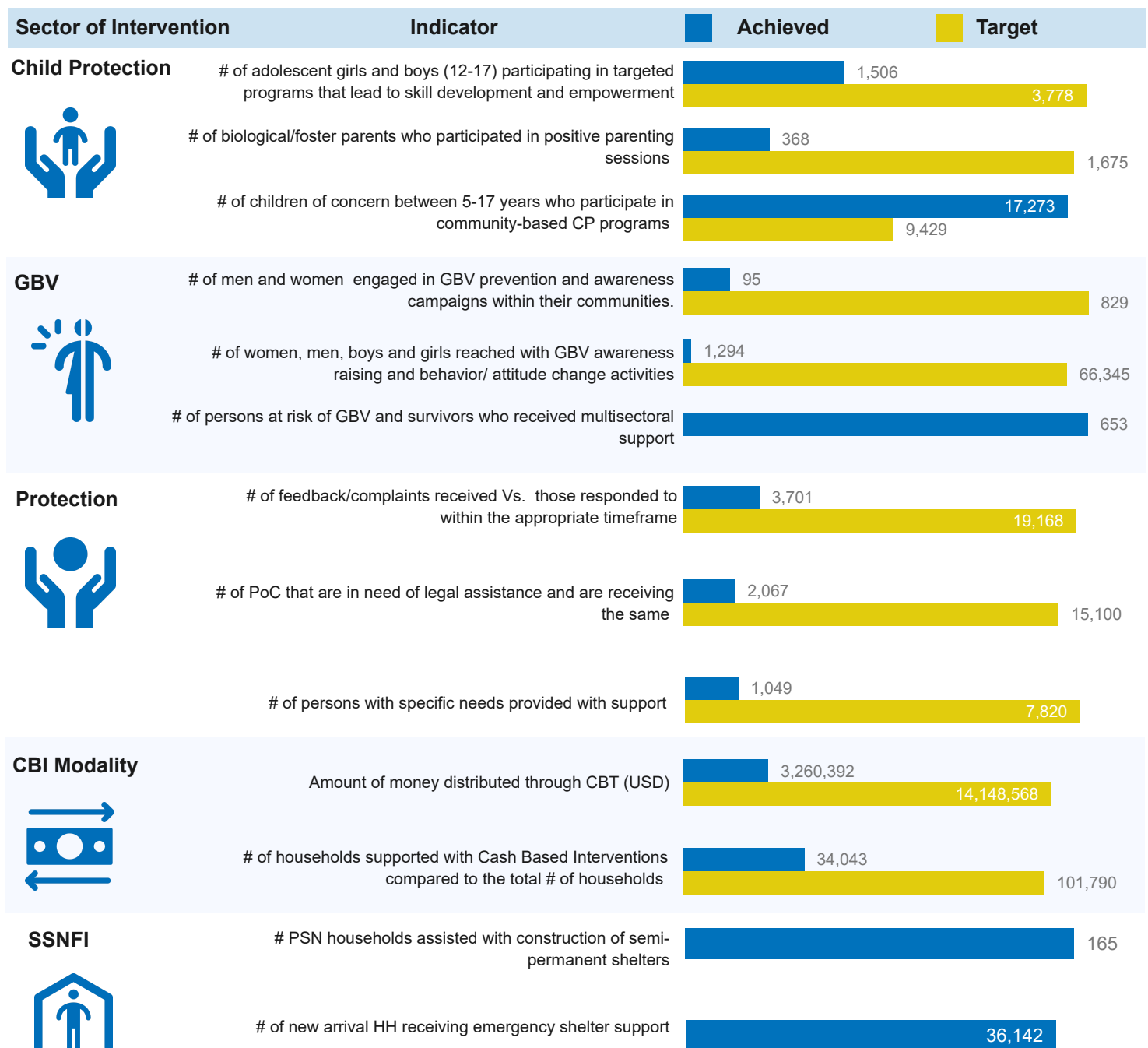
Nakivale Performance Snapshot

<b>Population</b> Refugees and asylum-seekers	<b>51</b> Partners in Response	<b>8</b> RLOs/CBOs	<b>3</b> Government Partners	<b>3</b> UN Agencies
<b>266,228</b> Refugees and asylum seekers	<i>On average two performance indicators are reflected per sector against the annual 2024 RRP targets</i>			
<b>101,790</b> Households			<b>11</b> National NGOs	<b>26</b> International NGOs

Sector of Intervention	Indicator	Achieved	Target
------------------------	-----------	----------	--------



## Nakivale Performance Snapshot



### Partner Presence by Q2 2025, UN Agencies and Government

#### National NGOs

ACORD, AWYAD, HFU, N&T, Nsamizi, SAU, and TPO

#### Refugee Led Organizations (RLOs)

YARID

#### International NGOs

ACF, AIRD, Alight, CARE, COVOID, DRC, Equity Bank, FCA, FRC, GF, HI, HIJRA, IsraAID, MSF, MTI, NRC, RGF, SCI, Swisscontact, TTR, URCS, WCC, and WCH

#### UN Agencies

IOM, UNFPA, UNHCR, UNWOMEN, and WFP

#### Government

Isingiro DLG, NFA, and OPM





Oruchinga Performance Snapshot

<b>Population</b> Refugees and asylum-seekers	<b>21</b> Partners in Response	<b>0</b> RLOs/CBOs	<b>2</b> Government Partners	<b>2</b> UN Agencies
<b>8,113</b> Refugees and asylum seekers	<i>On average two performance indicators are reflected per sector against the annual 2024 RRP targets</i>			<b>6</b> National NGOs
<b>1,734</b> Households				<b>11</b> International NGOs

Sector of Intervention	Indicator	Achieved	Target
------------------------	-----------	----------	--------

Education



% children enrolled in Primary 135

95

Teacher Pupil ratio (1:65) 50

National Std 1 : 53

65

Health & Nutrition



Under 5 mortality rate 0.00

Standard: < 1.5

2.00

Moderate acute malnutrition recovery rate 0

Standard: > 85%

85

WASH



# of litres per person per day 19

Standard: 20l/p/d

20

% household latrine coverage 77

85% sanitation coverage

77

Energy & Environment



# of hectares of woodlots/plantations established 10

150

# of HH supported with clean and/or energy efficient technologies for cooking 2,500

Food Security



# of refugees and asylum seekers receiving food assistance disaggregated by modality (Cash + In-kind) 14,510

8,113

● Cash ● # of refugees

Quantity of food provided (Metric Tonnes) 146

Livelihoods & Resilience



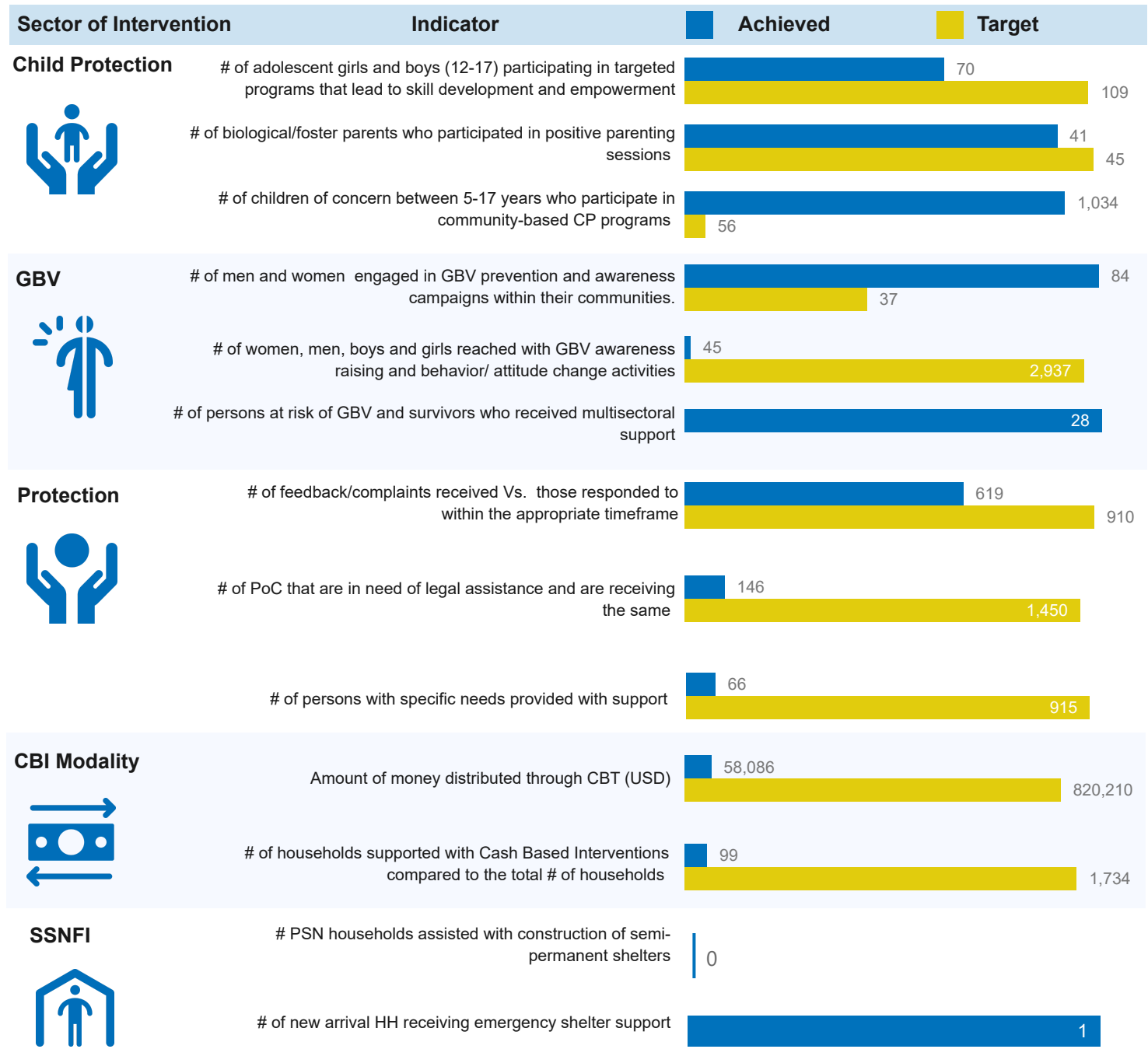
Acres of arable land accessed by refugees

HH having received livelihood support 0

# of men, women, boys and girls trained on financial literacy 63

146

Oruchinga Performance Snapshot



Partner Presence by Q2 2025, UN Agencies and Government

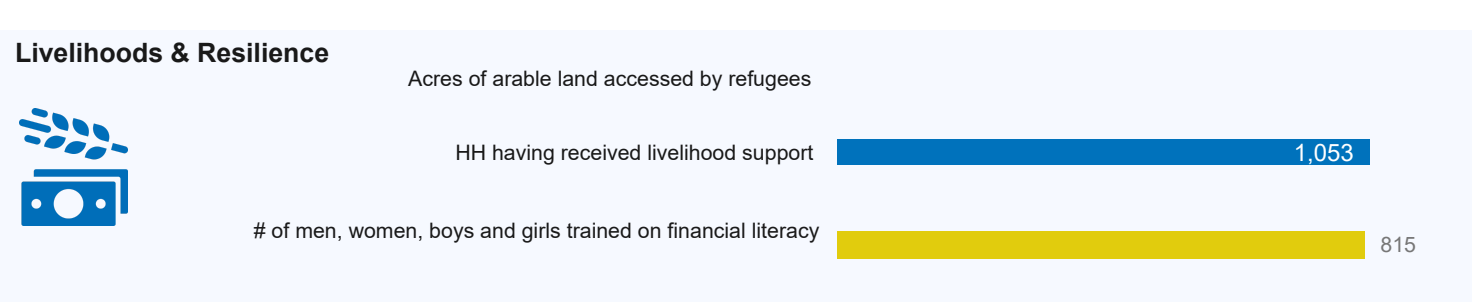
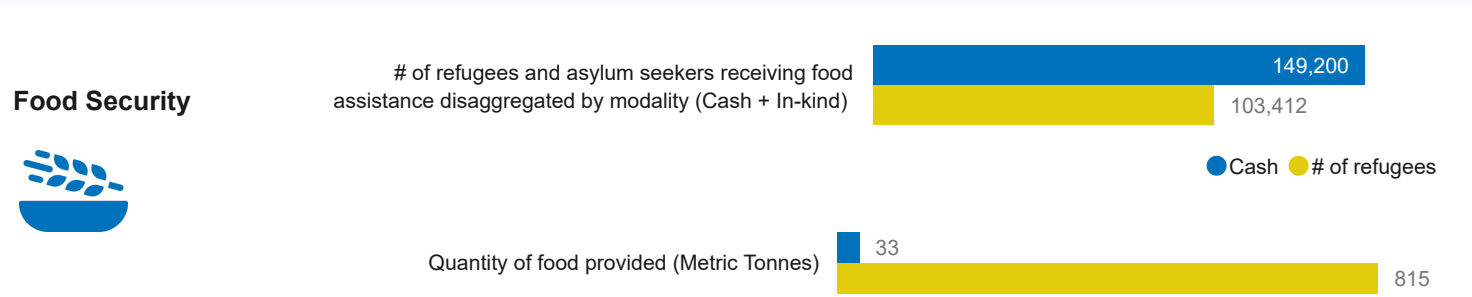
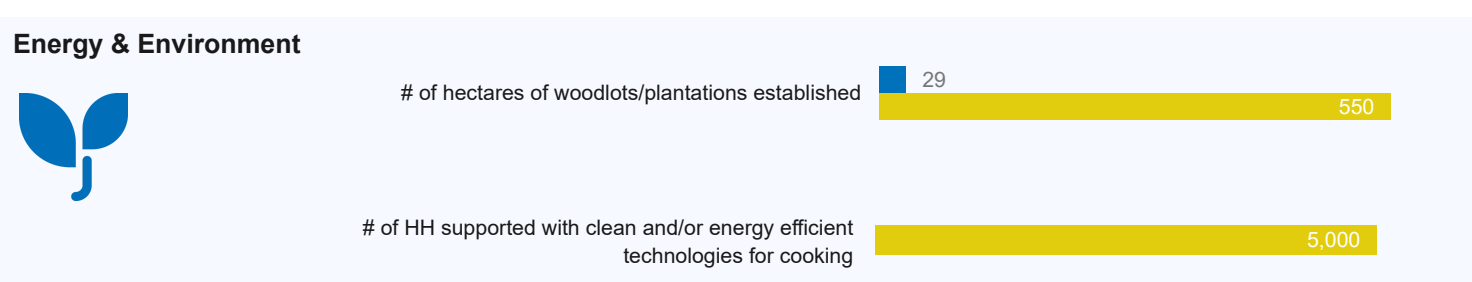
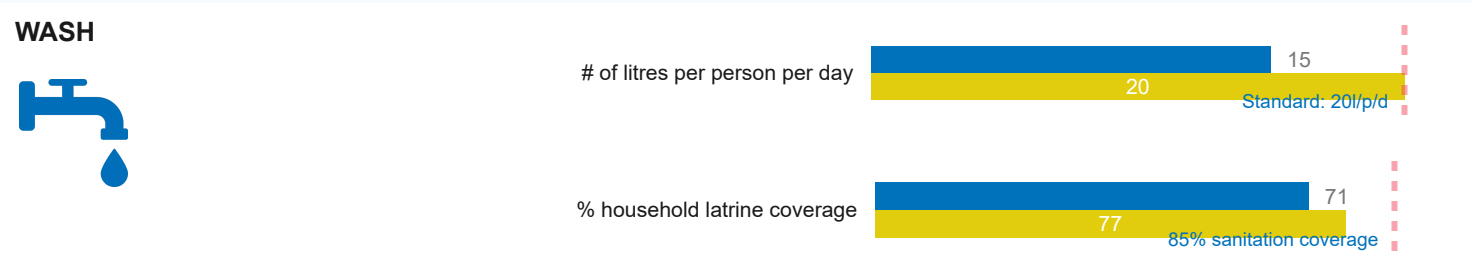
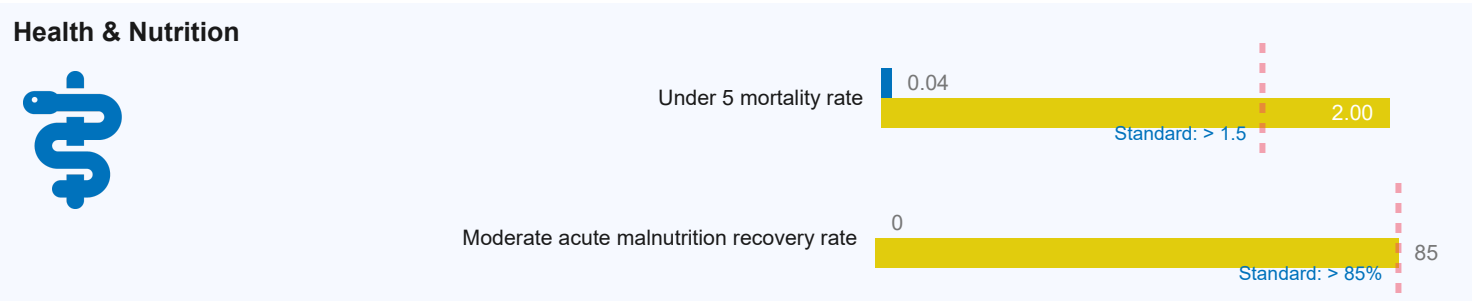
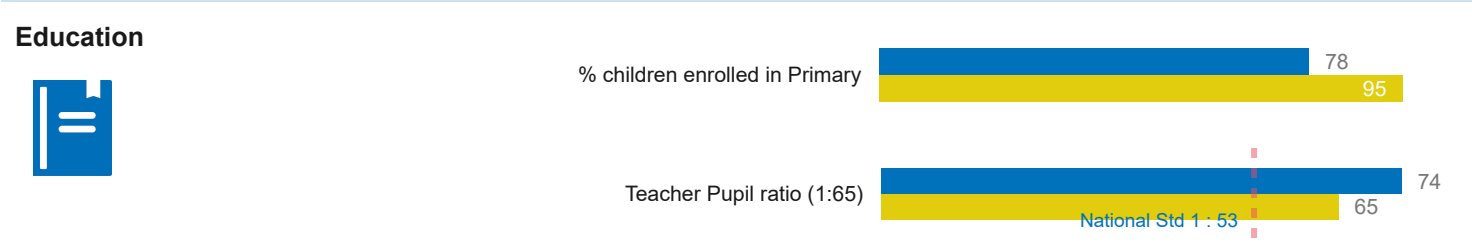
- National NGOs**  
HFU, N&T, Nsamizi, SAU, and TPO
- Refugee Led Organizations (RLOs)**  
YARID
- International NGOs**  
ACF, AIRD, Alight, DRC, Equity Bank, FRC, HIJRA, MSF, MTI, SCI, URCS, WCC, and WCH
- UN Agencies**  
UNHCR and WFP
- Government**  
Isingiro DLG and OPM



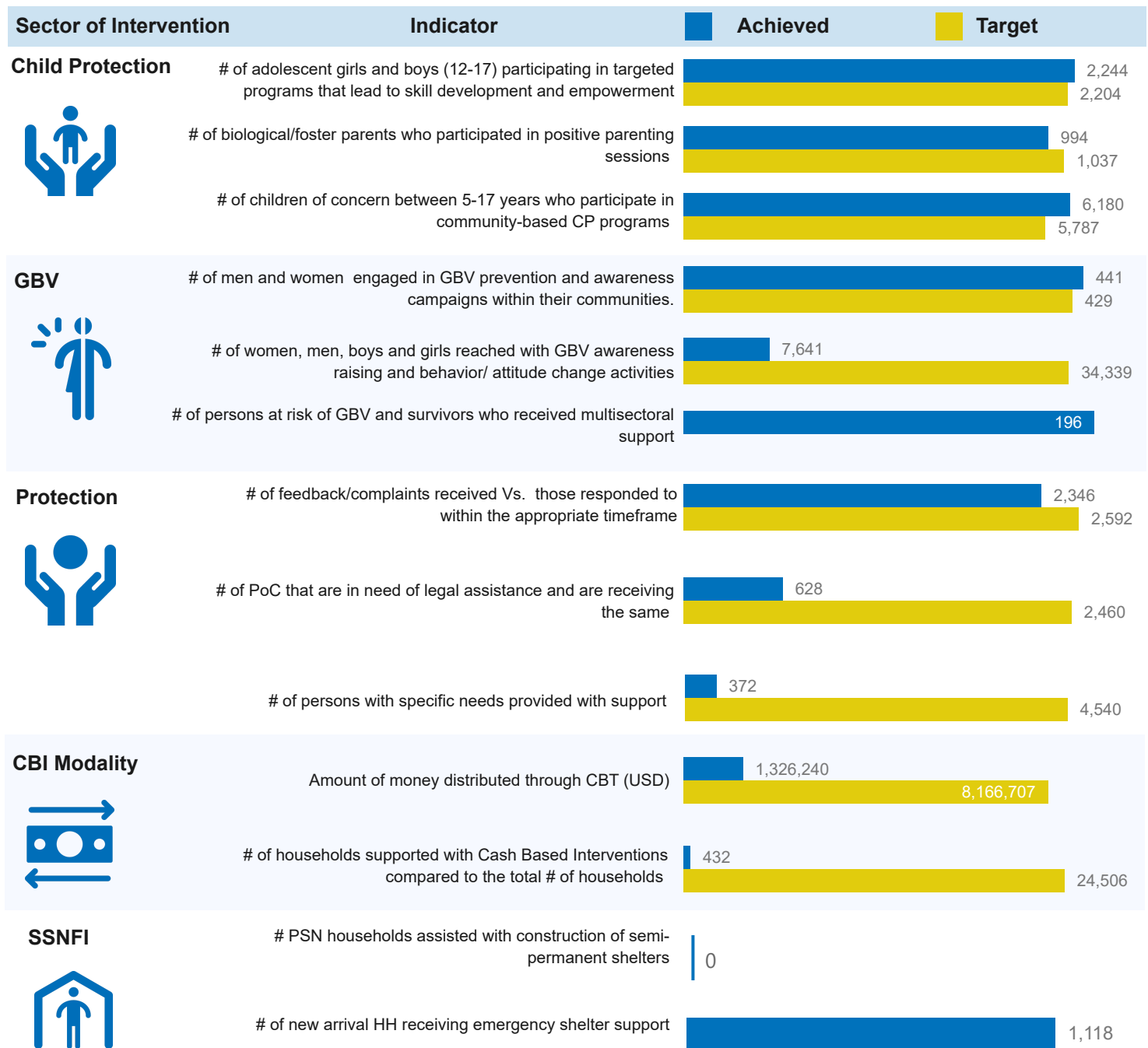
Rwamwanja Performance Snapshot

<b>Population</b> Refugees and asylum-seekers	<b>27</b> Partners in Response	<b>0</b> RLOs/CBOs	<b>6</b> Government Partners	<b>3</b> UN Agencies
<b>103,412</b> Refugees and asylum seekers	<i>On average two performance indicators are reflected per sector against the annual 2024 RRP targets</i>			<b>6</b> National NGOs
<b>24,506</b> Households				<b>12</b> International NGOs

Sector of Intervention	Indicator	Achieved	Target
------------------------	-----------	----------	--------



Rwamwanja Performance Snapshot



Partner Presence by Q2 2025, UN Agencies and Government

National NGOs

AWYAD, Nsamizi, Post Bank, and TPO

International NGOs

ADRA, AIRD, Alight, AVSI, Equity Bank, FCA, HI, LWF, MTI, SCI, TTR, URCS, WCC, and WVI

UN Agencies

UNHCR, and WFP

Government

Kamwenge DLG, NARO, NFA, and OPM