



**LEBANON**  
Response Plan

# Activity Info 2026 Training

Child Protection

6 February 2026

# Agenda



---

## 1. Overview of the Lebanon Response Plan

- What is the LRP?
- LRP Strategic Objectives
- LRP 2026 At a Glance

## 2. Child Protection Sub-sector

- Sector PiN and Targets
- 2026 LogFrame

## 3. Activity Info Reporting

- What is Activity Info?
- Rols and Responsibilities
- 2026 Monthly Reporting
- 2026 Service Mapping



# Overview of the Lebanon Response Plan

# Overview of the Lebanon Response Plan (LRP)

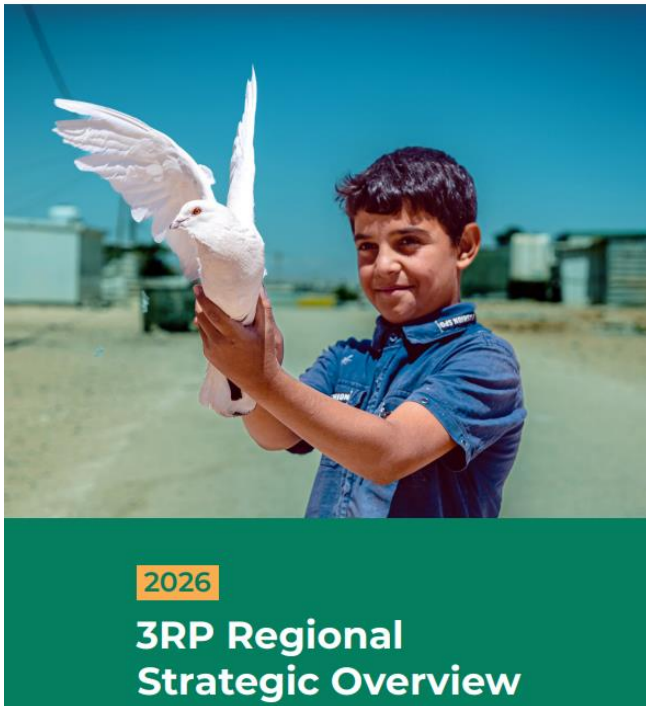


## What is the Lebanon Response Plan?

- **Unified national response framework:** The LRP remains the joint Government - United Nations plan for addressing the needs of crisis-affected populations in Lebanon.
- **Inclusive of all population groups:** Continues to support vulnerable Lebanese, displaced Syrians, Palestinian Refugees from Syria (PRS), Palestine Refugees in Lebanon (PRL), migrants, post-2024 arrivals, and households internally displaced due to recent hostilities.
- **Return as a national priority:** The 2026 cycle reflects the Government's priority to facilitate the safe, dignified, and informed return of Syrians, with return-related activities anchored across relevant sectors and consolidated in a dedicated Return Chapter.
- **Extended planning cycle with a clarified scope:** Building on the 2024–2025 cycle, the LRP is extended to 2026 with a maintained focus on humanitarian and stabilization activities, bridging a transition to the upcoming Cooperation Framework.
- **Prioritization driven by life-saving needs:** LRP 2026 is highly prioritized to reflect urgent needs and resource constraints, while maintaining the ability of sectors to reach people at scale across all population groups.
- **2026 Shift - Advancing transition to Government ownership:** The 2026 cycle strengthens the shift towards national leadership (e.g. cash assistance through MoSA) with sectors increasingly aligning strategies, data systems, and response parameters with line ministries. This reflects a gradual, deliberate transition towards enhanced Government ownership.
- **Reinforced preparedness and contingency planning:** The LRP incorporates contingency measures to ensure readiness for foreseeable scenarios and to keep operational preparedness as sharp as possible. *However, the LRP budget covers only limited contingencies and does not accommodate large-scale emergencies beyond agreed thresholds.*

# Overview of the Lebanon Response Plan (LRP)

*The LRP Falls under the Regional Refugee and Resilience Response Plan (3RP)*



Consolidates response requirements for **Jordan, Lebanon, and Turkey**.

Targets **3.65 million** refugees, asylum seekers, and stateless persons and **4.67 million** host community members.

2026 Total Requirements



**\$2.74 billion**



# Overview of the Lebanon Response Plan (LRP)

## *Strategic Objectives*



**Provide immediate humanitarian assistance to vulnerable populations to ensure critical needs are met.**



**Ensure protection of the vulnerable populations.**



**Support service provision through national systems including national rapid response capacity**



**Reinforce Lebanon's economic, social, and environmental stability.**

# Overview of the Lebanon Response Plan (LRP)

## At a Glance – 2026 Planning Figures



 **155** Appealing UN and NGO partners



### Child Protection

- **# Partners in 2026:**  
49 (67 in 2025 or 27% decrease)
- **Sector 2026 Appeal:**  
\$27.9M (\$44.4M in 2025 or 37% decrease)

**\$3.12B**  
2025 LRP Appeal



# Child Protection



# Child Protection sub-sector

People in Need and Targets



Child Protection



- # Partners in 2026:  
49 (67 in 2025 or 27% decrease)
- Sector 2026 Appeal:  
\$27.9M  
(\$44.4M in 2025 or 37% decrease)

	2024	2025	2026	
Sector: Total budget (USD)	207,158,629	187,254,216	184,914,888	184,914,888
% Humanitarian	69%	85%	73.6%	136,046,594
% Stabilization	31%	15%	26.4%	48,868,294

# Child Protection sub-sector

## People in Need and Targets



Child Protection



Population Cohort	People in Need	People Targeted
Lebanese	494,000	115,300
Displaced Syrians	495,500	79,000
Palestine Refugees from Syria	7,000	1,700
Palestine Refugees in Lebanon	60,700	8,200
Migrants	4,500	1,300
Total	1,061,700	205,500

- # Partners in 2026:  
49 (67 in 2025 or 27% decrease)
- Sector 2026 Appeal:  
\$27.9M  
(\$44.4M in 2025 or 37% decrease)

# Child Protection sub-sector

People in Need and Targets



Child Protection

- **# Partners in 2026:**  
49 (67 in 2025 or 27% decrease)
- **Sector 2026 Appeal:**  
\$27.9M  
(\$44.4M in 2025 or 37% decrease)



CP Activities	PeopleTargeted
Trainings/Capacity Development	2,500
Community-based CP for children	110,000
Explosive Ordnance Risk Education (EORE)	50,000
Focused Psycho-Social Support (FPSS)	33,000
Specialized CP Services (CM)	10,000
<b>Total</b>	<b>205,500</b>

# Child Protection sub-sector

## People in Need and Targets



### Child Protection

- **# Partners in 2026:**  
49 (67 in 2025 or 27% decrease)
- **Sector 2026 Appeal:**  
\$27.9M  
(\$44.4M in 2025 or 37% decrease)

	2026		
	Budget (USD)	% Humanitarian	% Stabilization
<b>Outcome 1: Affected people have increased knowledge of their rights and have access to an effective justice and protection system</b>			
Output 1.1 : Individuals at heightened risk are provided within information on their rights and have access to effective legal aid services	23,782,783	0%	100%
Output 1.2: Protection legal and policy frameworks and national protection institutions are strengthened	248,775	0%	100%
Output 1.3: Protection risks are monitored and advocacy and technical support provided to relevant actors to mitigate the risks	856,000	40%	60%
<b>Outcome 2: Affected people are safe, supported, and empowered in their community to contribute to positive change</b>			
Output 2.1: Affected people are provided with information services and rights and benefit from inclusive and accessible community protection initiatives	19,342,123	66%	34%
Output 2.2: Affected people are engaged in social and behavior change on protection issues including equality, GBV, and child protection	8,930,736	52%	48%
Output 2.3: Effective and accessible feedback and response mechanisms, including to address Protection from Sexual Exploitation and Abuse (PSEA) and child safeguarding, are in place	838,880	100%	0%
<b>Outcome 3: Individuals at heightened risk have access to quality specialized protection response services and durable solutions</b>			
Output 3.1: Quality protection, Child Protection, and GBV case management, psychosocial support, protection cash, and other specialized services are available and accessible to individuals at heightened risk	71,787,391	81%	19%
Output 3.2: Syrian Displaced and Refugees have access to durable solutions including voluntary repatriation, resettlement and complementary pathways	55,276,200	100%	0%
Output 3.3: Migrants have access to safe and dignified return assistance to their countries of origin	3,852,000	100%	0%

# Child Protection sub-sector

## Results Framework (2026 Logframe)



### OUTCOME 1:

Affected people have increased knowledge of their rights and have access to an effective justice and protection system.

**Output 1.2:** Protection legal and policy frameworks and national protection institutions are strengthened.

### OUTCOME 2:

Affected people are safe, supported, and empowered in their community to contribute to positive change.

**Output 2.1:** Affected people are provided with information services and rights and benefit from inclusive and accessible community protection initiatives.

**Output 2.2:** Affected people are engaged in social and behavior change on protection issues including equality, GBV, and child protection.

**Output 2.3:** Effective and accessible feedback and response mechanisms, including to address Protection from Sexual Exploitation and Abuse (PSEA) and child safeguarding, are in place.

### OUTCOME 3:

Individuals at heightened risk have access to quality specialized protection response services and durable solutions.

**Output 3.1:** Quality protection, Child Protection, and GBV case management, psychosocial support, protection cash, and other specialised services are available and accessible to individuals at heightened risk.

# Child Protection sub-sector

## Results Framework (2026 Logframe)



**OUTCOME 1:** Affected people have increased knowledge of their rights and have access to an effective justice and protection system.

Output 1.2: Protection legal and policy frameworks and national protection institutions are strengthened.	1.2.3	# of stakeholders trained on child protection
	1.2.6	# of initiatives supporting the strengthening and sustainability of national systems including institutional and technical support ( NOT IN Activity Info )

**OUTCOME 2:** Affected people are safe, supported, and empowered in their community to contribute to positive change.

Output 2.1: Affected people are provided with information services and rights and benefit from inclusive and accessible community protection initiatives.	2.1.4	# of children and caregivers receiving Explosive Ordnance Risk Education ( NOT IN Activity I. )
	2.1.6	# of girls and boys engaged in community-based Child Protection activities at the community centers, including CDCs, SDCs, and mobile protection activities held outside the center
Output 2.2: Affected people are engaged in social and behavior change on protection issues including equality, GBV, and child protection.	2.2.1	# of caregivers engaged in activities to promote the well-being and protection of children
	2.2.2	# of women, men, girls, and boys reached by social and behavioral change initiatives (including QUDWA)
Output 2.3: Effective and accessible feedback and response mechanisms, including to address Protection from Sexual Exploitation and Abuse (PSEA) and child safeguarding, are in place.	2.3.2	# of children and adults reached through awareness-raising activities and community mobilization interventions on PSEA
	2.3.7	# of partners with established Feedback and Complaint Mechanism inclusive of APP and PSEA ( NOT IN Activity Info )

# Child Protection sub-sector

## Results Framework (2026 Logframe)



**OUTCOME 3:** Individuals at heightened risk have access to quality specialized protection response services and durable solutions.

Output 3.1: Quality protection, Child Protection, and GBV case management, psychosocial support, protection cash, and other specialised services are available and accessible to individuals at heightened risk.	3.1.1	# of girls and boys receiving life saving specialized services through quality case management
	3.1.3	# of girls and boys and caregivers receiving focused PSS to address Child protection issues and improve their psycho-social wellbeing
	3.1.8	# of unique individuals newly included in recurrent protection cash
	3.1.8a	Total amount disbursed in USD (RPCA)
	3.1.8b	# of children supported with emergency protection cash assistance (ECA)





# Activity Info Reporting

# Activity Info Reporting

*What is AI?*



Online platform that allows humanitarian organizations to:

1. Store data on defined **indicators**
2. Identify the specific **location of interventions** (geo-locate)
3. Access, manage, map and **analyze indicators**
4. See who does what where **4Ws**

# Activity Info Reporting

*What's AI used for?*



- Monitor **interventions** in the field
- **Report** achievements to sectors and funding agencies
- **Monitor** your programmes and generate achievement reports

# Activity Info Reporting

## *Roles and Responsibilities for Partners*



1. **Insert Project details**: locations, funding agencies, sector(s) of intervention, targeted population, etc.
2. **Reporting timely** and in an accurate manner
3. **Respect deadlines** (**Week1 of every month**)
4. **Maintain the database** up to date for the Organization
5. **Follow up to clarification** requests by Sector

# Activity Info Reporting

## *Roles and Responsibilities for the Sector Coordinator*



1. Ensure reported data is **accurate and verify** the information if in doubt
2. Ensure **partners are reporting on time** with relevant data
3. Formally **approve information** (**Week 2 of every month**)
4. **Promote the use of Activity Info** with all humanitarian partners

# Activity Info Reporting

## *Roles and Responsibilities for the Sector Information Management Officer*



1. **Design the reporting platform** in line with the Sector Results Framework (Logframe)
2. Provide **access to the database and training**
3. Support **technically Sector Leads/Co-leads**
4. Support technically the production of **monthly reports**, maps and other sector-related information products
4. Ensuring that the **database** is up-to-date and functioning

# Activity Info Reporting

## 2026 Monthly Reporting





# Activity Info Reporting

## 2026 Service Mapping 2026



00-2026 LRP Sector Reporting

2026 Lebanon service mapping database

2026 Service mapping

+ Add

▶ Submit

👁 Views

📄 Import

📄 Export

📊 Analyze

	Partner	Services Sector	Services Service	Response type	Activity End Date	CALCULATED Expired	Location
		Sector	Service				
		Child Protection	CP01a: Case Management for At-Risk Children (General)				
		Child Protection	CP01b: Case Management for Street and Working Children (SaWC)				
		Child Protection	CP01c: Alternative Care Services for Unaccompanied Children				
		Child Protection	CP01d: Capacity Development for Case Management				
		Child Protection	CP02: Community based PSS for children (group sessions)				
		Child Protection	CP03: FPSS services for children (group sessions)				
		Child Protection	CP04: Parenting services/PSS for caregivers (group sessions)				
		Child Protection	CP05: Capacity building for frontliners				
		Child Protection	CP06: Staff wellbeing services				

# Activity Info Reporting

## 2026 Service Mapping 2026



### Inter-Agency Service Mapping

Take me to Online Dashboard

Take me to Activity Info

Your central platform to services and assistance (referral pathways and 5W)

<https://ialebanon.unhcr.org/#ServiceMapping>

### Inter-Agency Service Mapping for Lebanon

1/28/2026 7:07:51 PM

LEBANON Response Plan

This is your central 'live' platform capturing all services and assistance across sectors and across governorates in Lebanon. It captures all referral pathways across the response to facilitate timely and accurate referrals between agencies. It is automatically updated based on partner reporting in Activity Info. Please keep your services up to date by reporting on Activity Info [here](#)

Search

More Search...

Clear All

# of agencies: 66

# of services: 2124

Type of Service

Search

- ☐ Child Protection
- ☐ CWG
- ☐ Education
- ☐ Food Security & Agriculture
- ☐ GBV
- ☐ Livelihoods
- ☐ Nutrition
- ☐ Protection
- ☐ Shelter
- ☐ Social Stability
- ☐ WaSH

Governorate

All

District

All

Response Type

All

Service Type

All

WHO: Organization

All

Eligibility Criteria (Nationality)

All

Target Group (Sex)

All

#### # of services by sector

Protection	580
GBV	453
Child Protection	246
Education	212
Nutrition	168
WaSH	127
Livelihoods	111
Food Security & ...	96
Shelter	74
Social Stability	37
CWG	20

#### Presence Map

View Details

1. Click on a row on the below table to select a service.  
2. Click on the "View Details" button to view additional details related to the specific service.

Sector	District	Organization	Services	CONTACT: Primary Focal Point (Full name)
Livelihoods	Baabda	AMEL	L03: Cooperative Support - Non-refundable grant	"Hay El Sellom:Leila Khalifa Hay El Sellom:Farah Sadek Chiah: Salma moussa Nabatieh: Hussein Jaber Kamed El loz:Abir Chamsedd
Livelihoods	Baabda	AMEL	L16: Vocational Training- Life skills (soft skills)	"Hay El Sellom:Leila Khalifa Hay El Sellom:Farah Sadek Chiah: Salma moussa Nabatieh: Hussein Jaber Kamed El loz:Abir Chamsedd
Livelihoods	Baalbek	AMEL	L03: Cooperative Support - Non-refundable grant	"Hay El Sellom:Leila Khalifa Hay El Sellom:Farah Sadek Chiah: Salma moussa Nabatieh: Hussein Jaber Kamed El loz:Abir Chamsedd
Livelihoods	Baalbek	AMEL	L16: Vocational Training- Life skills (soft skills)	"Hay El Sellom:Leila Khalifa Hay El Sellom:Farah Sadek Chiah: Salma moussa Nabatieh: Hussein Jaber Kamed El loz:Abir Chamsedd
Livelihoods	El Nabatieh	AMEL	L03: Cooperative Support - Non-refundable grant	"Hay El Sellom:Leila Khalifa Hay El Sellom:Farah Sadek Chiah: Salma moussa Nabatieh: Hussein Jaber Kamed El loz:Abir Chamsedd
Livelihoods	El Nabatieh	AMEL	L16: Vocational Training- Life skills (soft skills)	"Hay El Sellom:Leila Khalifa Hay El Sellom:Farah Sadek Chiah: Salma moussa Nabatieh: Hussein Jaber Kamed El loz:Abir Chamsedd
Livelihoods	Sour	AMEL	L16: Vocational Training- Life skills (soft skills)	"Hay El Sellom:Leila Khalifa Hay El Sellom:Farah Sadek Chiah: Salma moussa Nabatieh: Hussein Jaber Kamed El loz:Abir Chamsedd
Livelihoods	West Bekaa	AMEL	L03: Cooperative Support - Non-refundable grant	"Hay El Sellom:Leila Khalifa Hay El Sellom:Farah Sadek Chiah: Salma moussa Nabatieh: Hussein Jaber Kamed El loz:Abir Chamsedd
Livelihoods	West Bekaa	AMEL	L16: Vocational Training- Life skills (soft skills)	"Hay El Sellom:Leila Khalifa Hay El Sellom:Farah Sadek Chiah: Salma moussa Nabatieh: Hussein Jaber Kamed El loz:Abir Chamsedd
Protection	Baabda	AMEL	Pr07: Community-based support and services (community volunteers, community-based PSS and support groups, etc.)	"Hay El Sellom:Leila Khalifa Hay El Sellom:Farah Sadek Chiah: Salma moussa Nabatieh: Hussein Jaber Kamed El loz:Abir Chamsedd
Protection	Baalbek	AMEL	Pr07: Community-based support and services (community volunteers, community-based PSS and support groups, etc.)	"Hay El Sellom:Leila Khalifa Hay El Sellom:Farah Sadek Chiah: Salma moussa Nabatieh: Hussein Jaber Kamed El loz:Abir Chamsedd
Protection	El Nabatieh	AMEL	Pr07: Community-based support and services (community volunteers, community-based PSS and support groups, etc.)	"Hay El Sellom:Leila Khalifa Hay El Sellom:Farah Sadek Chiah: Salma moussa Nabatieh: Hussein Jaber Kamed El loz:Abir Chamsedd
Protection	Sour	AMEL	Pr07: Community-based support and services (community volunteers, community-based PSS and support groups, etc.)	"Hay El Sellom:Leila Khalifa Hay El Sellom:Farah Sadek Chiah: Salma moussa Nabatieh: Hussein Jaber Kamed El loz:Abir Chamsedd
Protection	West Bekaa	AMEL	Pr07: Community-based support and services (community volunteers, community-based PSS and support groups, etc.)	"Hay El Sellom:Leila Khalifa Hay El Sellom:Farah Sadek Chiah: Salma moussa Nabatieh: Hussein Jaber Kamed El loz:Abir Chamsedd
Shelter	Aley	NRC	Sh14: Upgrading of Common Building Area	Abdul Aala kassir

# Important links

*Use the below links to access important platforms and files relevant to the Sector*

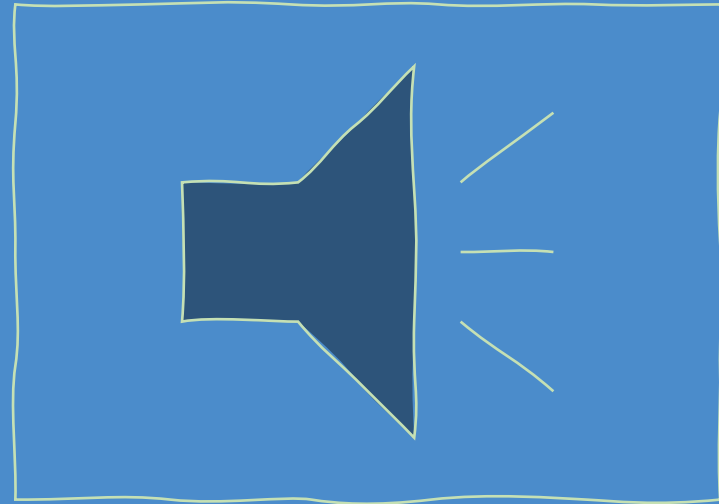
---



1. [LRP 2026](#)
2. [Return Chapter](#)
3. [Lebanon Information Hub](#) and [Child Protection Working Group \(CPWG\) Webpage](#)
4. [PRT/GBV/CP Logframe](#)
5. [Activity Info](#)
6. [Inter-Agency Service Mapping for Lebanon](#)



# Training session Recording





Thank you