

SITUATION OVERVIEW

- **Conflict & Displacement:** Insecurity and violence by Boko Haram and other non-state armed groups have displaced thousands of Nigerians across the Lake Chad Basin.
- **Affected Areas:** The majority of refugees originate from Borno, Yobe, and Adamawa states.
- **Return Efforts:** Refugees have returned either spontaneously, through Tripartite Agreements, or occasionally via bilateral arrangements between Nigeria and countries of asylum.

REPATRIATION FRAMEWORK

- **Cameroon:** Organized returns continue under the 2017 Tripartite Agreement, with **3,083 Nigerians** returning in 2026.
- **Chad:** A Tripartite Agreement was finalized in 2025, and over **7,000 refugees** were bilaterally repatriated in February 2025.
- **Niger:** A draft tripartite agreement with Niger and Nigeria is currently pending review and signature. However, over **17,000** refugees were bilaterally repatriated by the Government of Nigeria between April & November 2025

KEY FIGURES



417,151

Nigerian Refugees in Cameroon, Niger & Chad



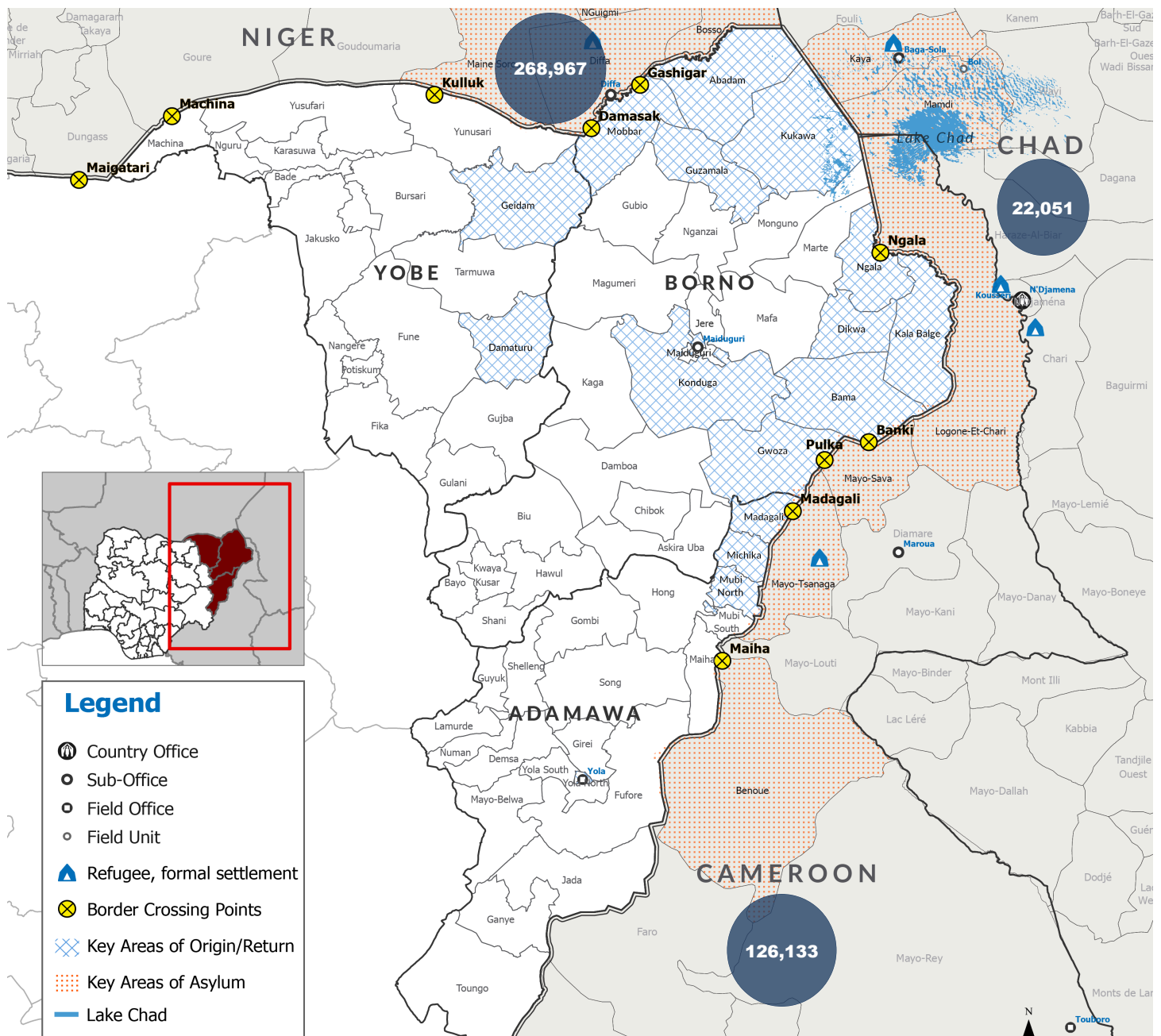
3,539

Spontaneous & organized returns recorded in 2026. Cumulatively **39,616** have returned since 2019.



71,222

Individuals surveyed with **32% (23K)** expressing their intention to return to Nigeria



Disclaimer: The boundaries and names shown and the designations used on this map do not imply official endorsement or acceptance by the United Nations.