



# SOUTH SUDAN REFUGEE SITUATION

## UNHCR REGIONAL UPDATE, 18

02 – 06 June 2014

### HIGHLIGHTS

- The suspected cases of cholera in Juba more than doubled, increasing from 395 cases on 22 May to 892 on 28 May, including 27 deaths.
- Following the verification process in Bentiu, Unity State, the estimated number of people sheltering in UN bases rose to 95,000.
- With the discussions still on-going with the government of South Sudan, there is an urgent need to relocate the over 30,000 refugees in Kilo 10, White Nile State.
- UNHCR and its partners have expressed concern about the approximately 20,000 new refugee influx currently in Burbiey waiting for relocation to the camps. The Inter-Agency Task Force under the leadership of UNHCR has been convened and is drafting an action plan to accelerate the relocation with support from IOM for transport.
- Earlier in the week, a notice was received from the Kenya Immigration office at the border indicating that access to Kenya territory by South Sudanese asylum seekers would be restricted to only three days a week. This followed a meeting between Kenya and the South Sudanese Immigration offices in which, it was deemed necessary to segregate asylum seekers from other travelers who are required to pay visa fees. The daily convoy to the border returned twice without any passengers as a result of this notice. Following this development, a joint mission to the border was conducted by UNHCR, DRA and the Deputy County Commissioner to gauge the situation on the ground. The decision was nullified and it was agreed with the Immigration officials that the daily convoys would resume as usual and asylum seekers would have unhindered access to the Kenyan territory.

**145,575**

South Sudanese refugees in Ethiopia

**110,368**

South Sudanese refugees in Uganda

**85,574**

South Sudanese refugees in Sudan

**37,736**

South Sudanese refugees in Kenya

**1,040,706**

IDPs in South Sudan

#### Population of concern for the situation since 15 Dec.

(as at 5 June)

A total of **1,419,959** people of concern

Refugees in Ethiopia **145,575**

Refugees in Uganda **110,368**

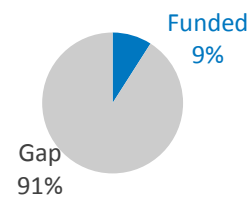
Refugees in Sudan **85,574**

Refugees in Kenya **37,736**

IDPs since 15 December **1,040,706**

#### Funding against the situation

**US\$427 million** requested for the situation



## RECENT DEVELOPMENTS

### Operational Context

The situation in Unity State was stable but unpredictable with heavy military presence reported in Bentiu and Rubkona; as a result both towns remained deserted. In Upper Nile, the situation remained tense, with unconfirmed reports of sporadic shooting on the southern bank of the Sobat River.

Between 26-28 May, UNHCR participated in an IRNA to Leer in Unity State which currently has a population of 24,000 people. This assessment mission revealed that most of the IDPs are mainly from Bentiu and other areas of Unity State.

On 30 May, a 13-member delegation from the AU Commission of Inquiry visited Bentiu and met with among other UN agencies, UNHCR, National Police and some groups of IDPs including Sudanese nationals; the purpose was to gather information on some alleged atrocities that were committed during the conflict.



*A South Sudanese woman carries a sleeping mat – Kakuma Refugee Camp (Kenya). ©UNHCR / C. Wachiaya / April 2014.*

## IDPs in South Sudan

### Protection

During the reporting period, a total of 47,233 children and more than 8,200 adults had been reached with the Child Protection in Emergencies (CPIE) services since the onset of the crisis. In addition, more than 35,400 children had received psychosocial services.

UNHCR developed an IDP Protection Monitoring tool that will be used to track return movements. In Leer, Unity State, an assessment mission was carried out to assess protection needs of displaced communities.

### Camp Coordination and Camp Management

In Upper Nile, partners continued to put in place flood mitigation measures, including improving the drainage system in the Malakal UN base. Displaced people in flood-prone areas were relocated to higher grounds. In Jonglei, preparation of the new site in Bor was ongoing while in Juba, improvements on the drainage system in UN House sites were also in progress.

### Shelter and NFIs

UNHCR conducted an NFI distribution to persons with specific Needs (PSNS) at Jebel Peace community and a total of 253 PSNs were registered and given kitchen sets, mosquito nets, mats and plastic sheeting.

### Food Security and Nutrition

Nearly 600,000 conflict-affected people had so far received food assistance and 480,000 were reached with recovery-based activities in non-conflict states. On the other hand, emergency livelihood support continued in Jonglei and Upper Nile states, with 2,500 and 8,556 crop kits distributed respectively.

Food shortage in the refugee camps is causing serious protection and security concerns. Country Representatives of UNHCR, WFP and Assistant Representative (Protection) UNHCR visited Maban in order to assess the situation on ground and to discuss immediate steps to address it. They met with refugee leaders who described the current situation as critical.

### Health

A total of 377,300 outpatient consultations so far conducted since the onset of the crisis. In addition, a surveillance system was in place with 32 reporting sites for priority diseases. Health and hygiene promotion was also in progress in the conflict-affected areas.

## Refugees

### Protection

#### SUDAN

- Relocation of Kilo 10 is becoming an emergency in light of the recent heavy rains, and discussions are still ongoing at the Government level to finalize the site identification and the modalities of the relocation.
- Following a request from the Commission for Voluntary Humanitarian Work (CVHW), UNHCR supported the coordination of a joint rapid needs assessment of South Sudanese communities in Khartoum State, which began on the 25 May. According to preliminary data, the immediate material needs include shelter and NFIs.

## ETHIOPIA

- Refugees continue to have un restricted access to Ethiopian territory and borders remain open. AARA and UNHCR continue to conduct Level 1 registration at the border entry points of Pagak, Akobo and Burbiey.
- UNHCR'S Implementing Partner IMC has started SGBV activities at Pagak Entry Point and is also organizing focus group discussions with women and girls. On the other hand, UNFPA has dispatched rape post-exposure prophylaxis (PEP) kits with additional reproductive health kits to Gambella. The PEP kits are now being distributed to all camps and entry points.
- With support from UNHCR's Implementing Partner SCI, a total of 1,305 children are attending Early Childhood Care Education in Kule 1 and 1,233 in Leitchuor. Furthermore, 3,617 children are attending education in emergency activities in Kule 1 and 3,936 in Leitchuor.
- Standard Operation Procedures for the Child Protection Strategy have been drafted and agreed together with UNHCR, ARRA and all partners. The roll-out of the strategy is scheduled to take place within two weeks.

## UGANDA

- In Adjumani, OPM/UNHCR with partners, the Danish Refugee Council (DRC-DDG), the Lutheran World Federation (LWF), Save the Children Uganda (SCiU) and the Uganda Red Cross Society (URCS) are carrying out protection and community service activities in the settlements. In addition, UNHCR still maintains daily presence at Elegu border point to ensure refugee protection. In Kiryandongo, a two - day protection training was conducted for 38 participants from implementing partners, local government, OPM, and also among the refugee community.
- Refugees are now being relocated from reception/transit centres to settlements where they receive a plot, household and shelter construction items as well as monthly WFP food rations. In Adjumani, UNHCR is using a contracted bus company to transport refugees from the Elegu border collection point to Nyumanzi reception centre in safety and dignity.
- In Arua, a two – day training on SGBV prevention and response was conducted and facilitated by Gender Specialists from Care international together with partners and government. Two cases of assault were reported. In Kiryandongo, a domestic violence case was reported to the police and suspects were arrested, with the victim now undergoing treatment at Panyadoli health centre. In addition, three SGBV cases were reported including one rape and two domestic violence cases.



## Food Security and Nutrition

### SUDAN

- General Food Distributions continued in White Nile State, specifically in Kilo 10, with 824 people receiving rations during the reporting period. To date, over 45,700 people have received food assistance in White Nile and South Kordofan States. The standard of 2,100 kcal/ per/day is being met.
- In White Nile State, a total of 1,549 children were screened for their nutritional status, of which 26 children were found with severe Acute Malnutrition (SAM) and 146 were found to have Moderate Acute Malnutrition (MAM). In Kilo 10, all the 26 new SAM cases were admitted during this week, four were discharged and no death so far reported.

### ETHIOPIA

- Nutrition services are continuing in the GOAL and ACF nutrition centers at Kule 1, 2 and Leitchuor, including Stabilization Centres, Outpatient Therapeutic Programmes and targeted Supplementary and Blanket Feeding Programmes. Decentralized nutrition services will start next week.
- In Pagak, all pregnant and lactating women and children under 5 years are receiving High Energy Biscuits (HEBS) with support from WFP. The nutrition program has admitted 10,390 children under the age of five into the CMAM program through the support of UNHCR, AAR, GOAL, MSF-F, ACF, and UNICEF.

## UGANDA

- In Kiryandongo, three hot meals are being provided in the reception centre while in Adjumani, two hot meals are served. In addition, MSF-F and MTI continued offering clinical management of acutely malnourished children. WFP distributed food for cycle 5 in Arua district.



## Water and Sanitation

### SUDAN

- The rains on the 29 and 30 May - resulted into decreased water trucking to Kilo 10 on these days, and the heavy rains on 4 June further deteriorated the situation, with water trucking transport halted as it awaits decision to be taken on relocation.
- UNICEF in collaboration with WES department will install additional five bladders in Kilo 10, based on that Plan international-Sudan will provide additional 134,000 liters of water on daily bases to fill the gap in water supply in Kilo 10 as temporary solution.
- Plan International-Sudan, SRCS and UNICEF with other actors are continuing their support to WASH activities in Kilo 10 and Alagaya areas under the supervision of MOH and WES programme.
- The total daily water trucking for camp is 286,000 liters/day (Plan International-Sudan is providing 254,000 liters and WES with the support of UNICEF provides 32,000). The total water quantity increased by 60,000 liters from the last week. The gap in water quantity in Kilo 10 is 158,255 liters. The planned activity of installation of five additional bladders is expected to reduce this gap.

### ETHIOPIA

- In all locations, digging of latrines is an ongoing activity. The ratio of latrines to people is 1:61 in Leitchuor, 1:25 in Pugnido, 1:264 in Burbiey, 1:10 in Okugo, 1:8 in Pagak, 1:113 in Kule 1 and 1:55 in Kule 2. In Kule 1, NRC has recently completed 9 blocks comprising 36 latrines, and MSF-H has completed 2 blocks comprising 8 latrines.
- In Burbiey, refugees now access 6 litres of water per person per day. In Pugnido, refugees are accessing 26 litres of water per day, 7 litres per person per day in Kule 1 and 13 litres per person per day in Kule 2.

### UGANDA

- The current water supply are as follows: 17.2 l/p/d in Adjumani TCs and settlements, 15.2 l/p/d in Kiryandongo and in Arua, 13 l/p/d ( within villages with new arrivals) and 10 l/p/d across the entire settlement.
- In Kiryandongo, an intensive hygiene campaign on cholera prevention and good hygiene practices is on-going by WASH partners through house - to - house sensitization. In Arua, a total of 584 household latrines have been completed with 283 under construction by partners Oxfam, DRC-DDG, IAS and CARE.

### KENYA

- As of the reporting period, a total of 1,097 communal latrines had so far been constructed for the new arrivals in Kakuma - 4. The latrine - to - user ratio remains within the UNHCR standard for emergencies.
- AAR Japan handed over the water project that it has supported for the past two months to UNHCR.



## Health

### ETHIOPIA

- Linkage of camp health facilities with the government health system was undertaken. ARRA commenced construction of its permanent clinic in Leitchuor refugee camp.
- As of 04 June, a total of 83,957 children under five years had been vaccinated against measles and 64,650 under fifteen years against polio. Furthermore, 38,201 individuals received Vitamin A Supplementation, 22,289 deworming treatment and 312 pregnant women Tetanus Toxoid vaccines.

## UGANDA

- In Kiryandongo, 511 out patients were seen at the two health centres and the Health team continues to carry out routine medical check-ups, malnutrition screening and immunizations. In Arua, no cases of cholera are reported.
- In Adjumani, ACORD continued to reach out to pregnant women in different settlements in their mapping exercise and to refer them to the nearest health centres for antenatal follow-up. In addition, Tutapona on behalf of the Lutheran World Federation, conducted a number of activities, including group counselling to 166 people. UNHCR on the other hand, initiated a mental health working group to strengthen the coordination and improve the coverage of services.

## KENYA

- Health status of South Sudanese refugees was stable in the past week, with malaria cases decreasing to 588 compared to 596 in the previous week. 43% of all reported cases were among children under five years.
- IRC in partnership with Film AID International commenced an information campaign to promote Exclusive Breastfeeding in the camp. This activity targets the entire camp population, including new arrivals and will end on 12 June.

## Shelter and NFIs

### ETHIOPIA

- In Kule 1, WFP completed the erection of its new rub hall for food storage, which is located on higher ground on the road to Zone C. The construction of the ARRA semi-permanent health centre and GOAL clinic is on-going.
- In Kule 2, the relocated refugees are receiving a full package of CRIs, including blankets, sleeping mats, jerry cans, buckets, soap, mosquito nets and kitchen sets. Tent pitching and site clearing are also in progress.

### UGANDA

- In Adjumani and Arua districts, a standard Core relief item (CRI) package and shelter kit are distributed to refugees upon relocation to settlements. In Kiryandongo, renovation (plastic roofing being replaced with iron sheets) of communal shelters at the reception centre continues with four of the five shelters completed.

### KENYA

- As of the reporting period, about 8,207 tents have been erected in Kakuma-4 to accommodate 36,199 individuals (8,789 families). In addition, a total of 150 plots have been demarcated in the past week.
- Roofing of durable shelters continued and so far, 795 roofs have been completed. However, more than 1,200 shelters require roofs.

## Education

### SUDAN

- In Kilo 10, two Child Friendly Schools (CFSs) were established with the capacity of 16 animators, and so far 624 South Sudanese children have been enrolled - (369 girls and 255 boys).
- In Al Alagaya the two CFSs established with support from UNICEF and operated by the Ministry of Welfare had stopped operating due to collapse of classes as a result of the heavy rains. Two new education tents will be transported by WES to Alagaya to replace the two CFS. However, transportation is pending due to the limited road access from rains, but expected to arrive early next week.

### UGANDA

- The Lutheran World Federation (LWF) identified a plot for the construction of a school in Ayilo I, Adjumani district. While in Kiryandongo, there are currently four primary schools with 37 classrooms and a total of 4,570 students enrolled, to date.

## KENYA

- Close monitoring of the recently introduced double shift system in all primary and emergency schools is ongoing in order to identify and address challenges. This comes after the increased enrolment in the schools, with the emergency schools having a current enrolment of 8,040 learners.

## FINANCIAL INFORMATION

UNHCR is very grateful for the financial support provided by donors particularly those who have contributed to UNHCR activities with un earmarked and broadly earmarked funds as well as for those who have contributed to the situation. Below are UNHCR's revised financial needs for providing protection and assistance to South Sudanese refugees in the neighboring countries, as well as discharging its responsibilities in the inter-agency framework to provide humanitarian assistance to IDPs in South Sudan. The South Sudan Situation covers Supplementary Budget activities in Ethiopia, Kenya, South Sudan, Sudan and Uganda. Total revised requirements amount to US\$ 427 million for 2014.

### Donors who have contributed to the Funding (in million US\$)

situation:

A total of **US\$47 million** has been funded

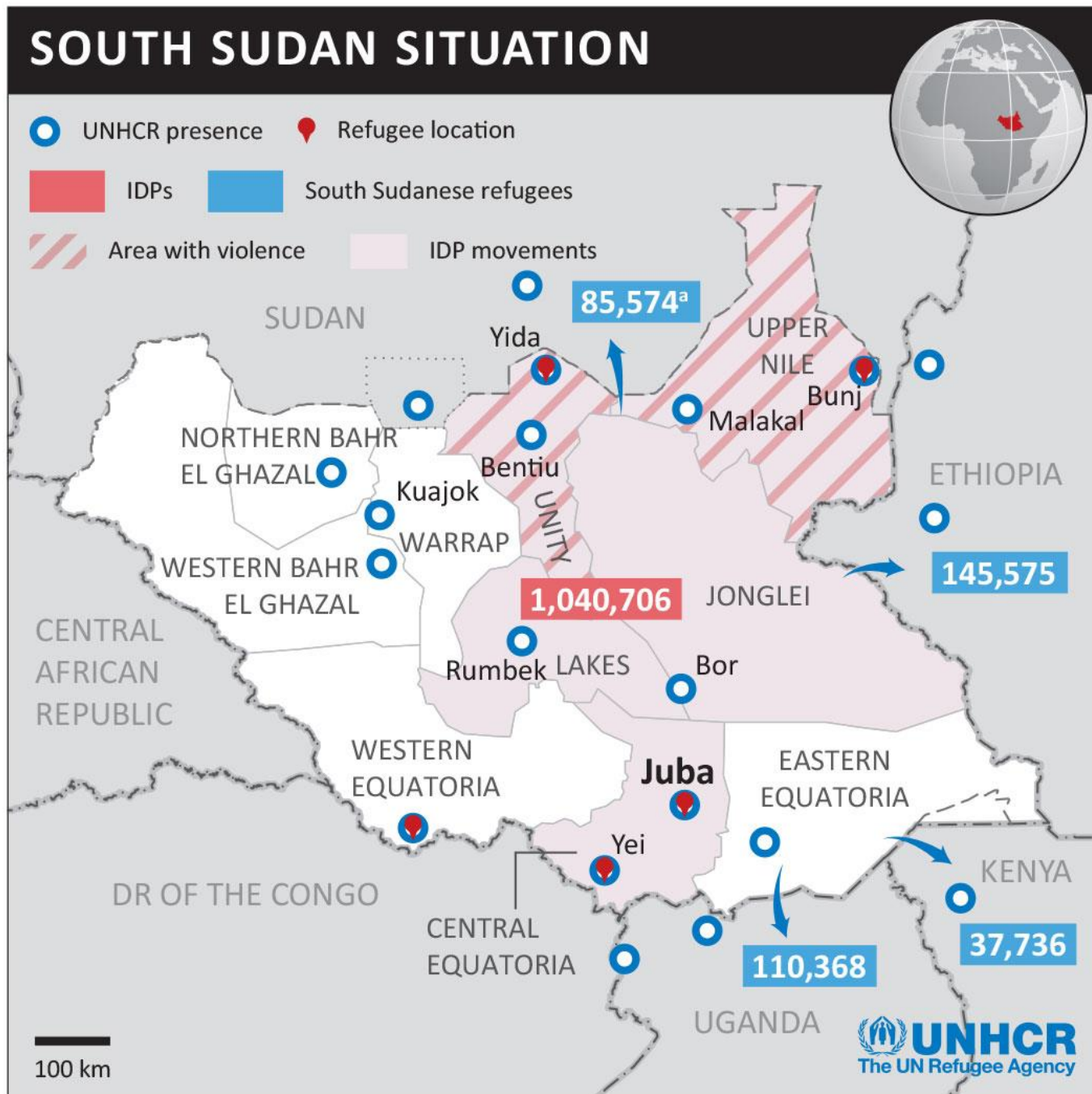


Note 1: In 2014 the following donors have given unearmarked funds to UNHCR: Algeria, Australia, Costa Rica, Denmark, Estonia, Finland, France, Germany, Hungary, Indonesia, Israel, Kuwait, Latvia, Luxembourg, Mexico, Monaco, Morocco, Mozambique, Netherlands, Norway, Republic of Korea, Saudi Arabia, Serbia, Singapore, Slovak Republic, Sweden, Switzerland, Thailand, Tunisia, United Arab Emirates, United Kingdom, Uruguay, and Private Donors.

Note 2: These figures are based on the Revised Supplementary Appeal (April 2014).

# ANNEXES

## Annex 1



<sup>a</sup>This figure does not include new arrivals in Abyei PCA Box.

Map Sources: UNCS, UNHCR, OCHA.

*The boundaries and names shown and the designations used on this map do not imply official endorsement or acceptance by the United Nations. Final boundary between the Republic of Sudan and the Republic of South Sudan has not yet been determined. Final status of the Abyei area is not yet determined. Creation date: 05 Jun 2014.*



## Annex 2

### ACRONYMS

Action Africa Help International (AAH-I); Action Africa Help Uganda (AAH-U)

Action Contre la Faim (ACF)

Acute respiratory infection-ARTI

Acute watery diarrhea (AWD)

Administration for Refugee and Returnee Affairs (ARRA)

Area Security Management Team (ASMT)

Association for Aid and Relief (AAR)

Best Interest Assessments (BIAs); Best Interest Determinations (BIDs)

Blanket Supplementary Feeding Programming (BSFP)

Camp Coordination and Camp Management (CCCM)

Centre for Voluntary Humanitarian Work (CVHW)

Child Friendly Spaces (CFSs)

Child Protection Information Management System (CP IMS)

Danish Refugee Council (DRC)

Department of Refugee Affairs (DRA)

Document Registration Agreement (DRA)

Education in Emergencies (EiE)

Emergency Blanket Supplementary Feeding Programme (EBSFP)

Emergency Obstetric and Newborn Care (EmONC)

Emergency Shelter and Non Food Item (ES/NFIs)

Field Security Coordination Officer (FSCO)

Food Security and Livelihoods (FSL)

General Food Distribution (GFD)

Global Acute Malnutrition (GAM)

High energy biscuits (HEB)

Humanitarian Aid Commission (HAC)

Infant and Young Child Feeding (IYCF)

Integrated Diseases Surveillance and Response (IDSR)

Intergovernmental Authority on Development (IGAD)

International Non-Governmental Organizations (INGOs)

International Organization for Migration (IOM)

International Rescue Committee (IRC)

Long Lasting Insecticide Treated Nets (LLITNs)

Lutheran World Federation (LWF)

Médecins Sans Frontières France (MSF-F)

Medical Team International (MTI)

Mid-upper-arm circumference (MUAC)  
 Ministry of Education (MoE)  
 Ministry of Health (MoH)  
 Ministry of Social Affairs (MoSA)  
 National Council of Churches of Kenya (NCCK)  
 Non-Food Items (NFI)  
 Norwegian Refugee Council (NRC)  
 Office of the Prime Minister (OPM)  
 Out-Patient Department (OPD)  
 Out-Patient Therapeutic Programme (OTP)  
 per person per day (pp/pd)  
 Protection of Civilians (PoC)  
 Protection and Deterrent Force (PDF)  
 Reception Centre (RC)  
 Regional Refugee Coordinator (RRC)  
 Save the Children in Uganda (SCiU)  
 Separated Children (SC)  
 Severe Acute Malnutrition (SAM)  
 South Kordofan State (SKS)  
 Sudan People's Liberation Army In Opposition (SPLA I/O)  
 Sudanese Red Crescent Society (SRCS)  
 Target Supplementary Feeding Programme (TSFP)  
 Training of Trainers (TOT)  
 Uganda Red Cross Society (URCS)  
 Unaccompanied Minors (UAMs)  
 United Nations Country Team (UNCT)  
 United Nations Humanitarian Air Service (UNHAS)  
 United Nations High Commissioner for Refugee (UNHCR)  
 United Nations Mission in South Sudan (UNMISS)  
 Water, Sanitation and Hygiene (WASH)  
 Water and Environmental Sanitation (WES) project  
 Windle Trust Uganda (WTU)  
 World Food Programme (WFP)  
 World Vision International (WVI)

**Contacts:**

Géraldine Boezio, Reporting Officer, [boezio@unhcr.org](mailto:boezio@unhcr.org), Tel: +41 (0)22 7398003

Wendy Rappeport, Senior External Relations Officer, [rappepor@unhcr.org](mailto:rappepor@unhcr.org), Cell: +41 (0)79 881 9183

**Links:**

For more information please visit: <http://data.unhcr.org/SouthSudan/regional.php>