

## UNHCR UGANDA

### UPDATE FOR THE SOUTH SUDAN EMERGENCY

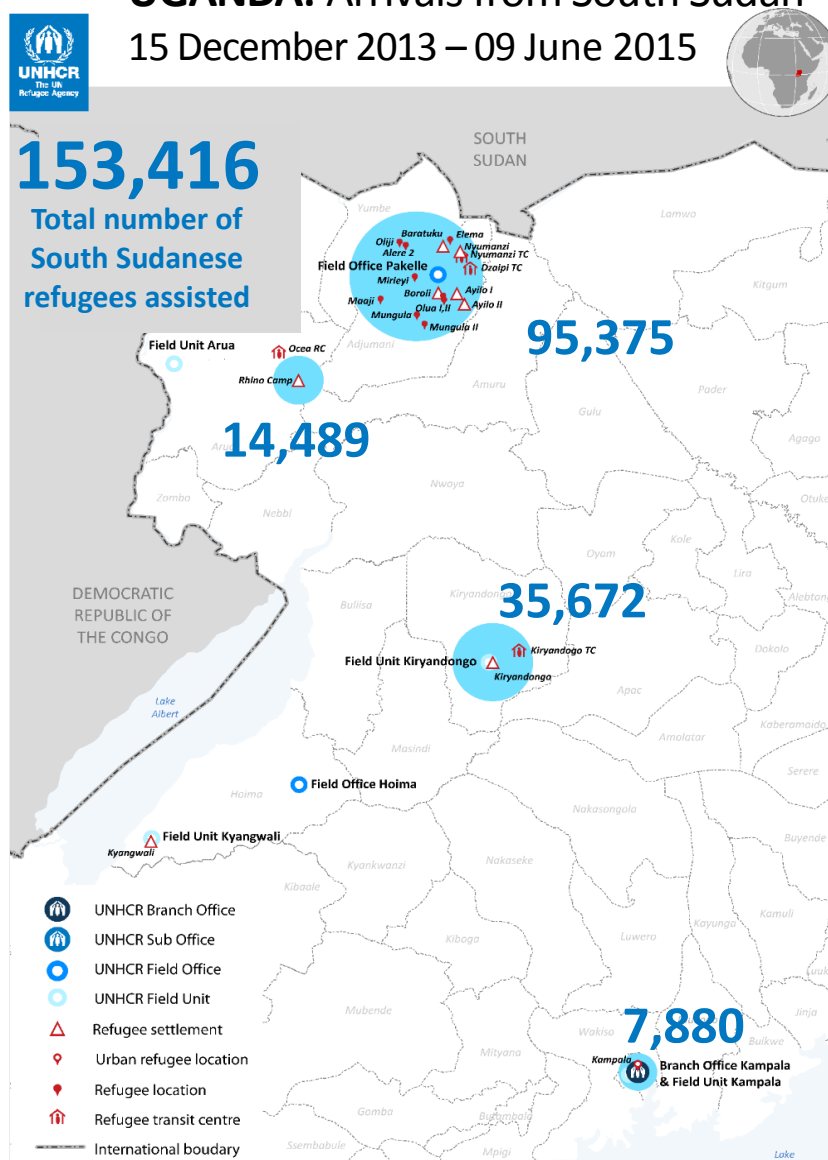
05<sup>th</sup> June – 11<sup>th</sup> June, 2015

## HIGHLIGHTS

- A total of **153,416** South Sudanese refugees have been assisted in Uganda since the influx began in mid-December 2013, including **95,375** in Adjumani, **14,489** in Arua, **35,672** in Kiryandongo and **7,880** in Kampala.
- Adjumani & Arua: On 2 June, a high-profile supporter of UNHCR – the American actress Kristin Davis– visited the Adjumani refugee operation and proceeded to Arua on 4 June. She was accompanied by a media crew. The purpose of the visit was to raise awareness among the international community about the South Sudanese refugee crisis and the emergency response, advocating for adequate support. The team visited Nyumanzi Transit Centre and Nyumanzi settlement, meeting newly arrived refugees, refugee representatives and livelihood projects beneficiaries. In Arua, the Mission interviewed three enterprising single female headed women involved in tailoring and restaurant management livelihood activities. The women have been supported with start-up kits through DRC-DDG with UNHCR funding. They were able to support their family through paying school fees, meet their domestic needs, construction of family huts. The mission was able to obtain an overview of the protection and assistance delivery, and to highlight human stories within the refugee community and experiences of resilience in exile.

### UGANDA: Arrivals from South Sudan

15 December 2013 – 09 June 2015



## UPDATE ON ACHIEVEMENTS

### Operational Context

- The South Sudanese warring parties claimed having defeated the other in different war fronts in Upper Nile and Bahr el Ghazal regions. South Sudanese army (SPLA) spokesperson, Colonel Philip Aguer, said government troops on Saturday 6 June 2015 managed to stop advancing rebel forces marching towards the main oil fields in Paloch, Upper Nile state.
- Adjumani: from 3 to 9 June 2015, 579 refugees arrived to Elegu Collection Point from South Sudan (i.e., average daily arrivals is almost 83 individuals, with peaks of 155 and 126 arrivals registered, respectively, on 4 and 9 June). This recent increase might have been produced in particular by the escalated security incidents in Unity, Jonglei and Upper Nile States in South Sudan. It is also to be noted that, according to the recent experience, a peak of arrivals is followed by a few days of decreased influx. In Kiryandongo, new arrivals still continue to trickle in, the main reason being fear and insecurity. The majority are Nuer and Shilluk from Unity State.
- Arua: A group of Congolese civilians wielding Knives, Pangas, Axes and other tools invaded Ovisoni Border Post in Vurra County claiming the territory and started construction on the No man's land. The incidents originates from past border disputes dating back to the pre-1914 Anglo-Belgian agreement. It seems to have been triggered by accusation that Ugandan authorities have impounded 02 trucks of immature fish destined to DRC. While this development does not impact the South Sudanese refugee's access to Uganda, it is likely to increase insecurity and tension along the Arua District - DRC border.
- Kiryandongo: The main activities in the settlements have been planning for World Refugee Day, Day of the African Child and celebrating the World Environment Day.



Refugee and host communities' farmers participating in a seed/tool fair organized by LWF in Ayilo 1 refugee settlement.  
©LWF Livelihood Sector

## Protection

### Achievements and Impacts

- Adjumani: DRC-DDG organized and conducted a paralegal training for refugee representatives. The training's main objective was to equip the participants with knowledge on how to create awareness on protection related issues, including SGBV and child protection related referrals, and be at the forefront of identifying legal issues affecting their communities. A total of 29 participants attended, of which 10 were females and 19 male.
- Arua: UNHCR organized a two-day long training in Arua with a theme "Enhancing Refugee Protection and Assistance".

### Relocations

- In Adjumani, relocation from Nyumanzi Transit Centre to Ayilo I settlement took place on 4 June: 315 refugees were safely relocated to Ayilo I, Block F.
- In Arua, cumulatively, a total of 2,919 families in 13,803 individuals (95%) new arrivals registered have been officially relocated by OPM with UNHCR assistance to settle in various villages in Rhino camp settlement since the influx on 16 December 2013.

### Persons with Specific Needs (PSNs)

- In Adjumani, LWF monitored the construction of 11 PSN huts. 42 huts had already been constructed by LWF out of 116 huts planned so far.
- In Arua, DRC-DDG conducted routine home visits to 139 Persons with specific needs (45 m, 94 f) in all the 13 villages of Rhino Camp settlement to assess their living conditions.

### Child Protection

- In Adjumani, 46 (29 male, 17 female) separated children (SC) were identified and registered at Elegu Collection Point and relevant psychosocial support was provided.
- In Arua, the cumulative number of identified, screened and registered unaccompanied minors in 2015 stands at 104 (58 m, 46 f). The cumulative number of separated children in 2015 stands at 188 (97 m, 91 f).

### Sexual and Gender-Based Violence (SGBV)

- Kiryandongo: Two cases of rape were received and supported with medical treatment thereafter were referred to police and OPM. One case was a referral from the police and one case was referred by the Women leader of the Refugee Welfare Committee (RWC) III. Both cases were referred to police, DCO and IAU for more support.
- Arua: 14 cases of SGBV cumulatively have been reported so far in 2015. 01 SGBV case was reported amongst the new arrivals at Ocea Reception centre. The reported case is a pregnant child mother survivor. She was referred to SCiU for emergency material support. Documentation for the case including BID was initiative by DRC-DDG.

### Psychosocial Support

- Arua: DRC-DDG provided psycho social counselling support to 07 (05 m, 02 f) individuals in 04 villages of Ocea, Ngurua, Tika I and Katiku villages. 02 female teenage pregnant mothers, 03 female physical assault survivors and 02 male alcohol addicts benefited from the counselling support.
- Adjumani: LWF conducted community psychosocial counselling; for four counselling groups with 73 (65F, 8M) members in the refugee settlements and one in the host community surrounding Nyumanzi settlement. The agency also conducted psychosocial group counselling in school for 35 (18F, 17M) children. The aim of the sessions was to assess the ability of the children to cope with trauma and build trust among themselves.

## Education

### Achievements and Impacts

- In Arua, WTU conducted the weekly pupils and teachers attendance monitoring from all the primary schools. The total average pupils' weekly attendance was 4,358. This showed 64% attendance compared to last week 62% hence an increment to enrolment by 2%.
- In Arua, 5th planning meeting to establish a temporary secondary school in Rhino Camp settlement was conducted, and a number of stakeholders attended the meeting. The school is scheduled to start soon in June.
- Kiryandongo: As of the third week of the new school term, 76% of the children who enrolled at the beginning of the year have reported to school. 3,747 of the 4,411 pupils (2,481 boys, 1,930 girls) are refugees.
- Kiryandongo: A panel comprising of UNHCR, OPM, WTU, IAU and Refugee Leaders (RWCs) interviewed 327 applicants for UNHCR /WTU Secondary Scholarships. 220 scholarships based on academic performance and vulnerability of applicants are to be awarded.

### Identified Needs and Remaining Gaps

- Adjumani: Melijio primary school, an integrated school supported by UNHCR in Olua II refugee village, with an enrolment of 634 children comprising of 441 refugees and 193 nationals, has reported a disaster caused by a falling tree on the roof of a classroom, due to heavy rains and storm of this week. Urgent action for renovation and risk prevention is required.

## Health

### Achievements and Impacts

- In Adjumani, the consultations per clinician per day were of 63 patients. The leading causes of morbidity in OPD were: malaria 38%, URTI 22%, skin disease 12% and watery diarrhea 11%. Overall there were 3,134 refugees and 1,951 nationals who received medical services in the health facilities. A total of 12 refugees were referred to the District Hospital from the settlements.
- In Arua, MTI, GRI and DHO carried out 2,422 consultations (870 refugees, 1,552 nationals). To-date since the beginning of the year, total of 43,728 (16,112 refugees, 27,616 nationals) consultations were conducted by MTI, GRI and DHO Arua health staff at the 04 health centres in Rhino Camp Settlement accounting for 37 % refugee consultations compared to 63 % nationals.
- Arua: 618 (161 refugees and 457 nationals) benefited from HIV/AIDS, VCT services in the four health centres in Rhino Camp, and none tested positive.
- In Kiryandongo, 28 mothers (12 refugees, 16 nationals) were admitted in the maternity ward. 1,000 Mama kits were received and will be distributed to expecting mothers through RMF. The mama kits will enhance and improve the maternal and child health of the beneficiaries during and immediately after delivery.

## Food Security and Nutrition

- Adjumani: Some refugees were noted to missing out food distribution in the settlement due to the loss of attestation letters or ration cards and the issue will be discussed further to clarify renewal process.
- In Adjumani, the supplementary feeding programme registered 27 new admission cases. The total admission for this programme in the district had reached 823 at the end of the reporting period. Meanwhile new admissions in the blanket supplementary feeding program was 130 children aged 6 to 24 months.
- In Arua, MTI carried out 1,597 nutritional screening (718 refugees and 879 host community children aged between 6-59 months). A total of 44 (07 refugees, 37 nationals) new clients were enrolled on SFP, discharged cured (SFP) were 15 (07 refugees, 08 national), 17 (08 refugees, 09 nationals) admitted with SAM and 15 discharged (06 refugees and 09 nationals) cured.

- Kiryandongo; Concern Worldwide gave support including nutrition screening, health education and management of identified cases. Concern Worldwide team has faced a challenge of moving from the previously allocated pediatric ward to yet a smaller ward, leading to a large number of 'floor' cases and no space for preparation of feeds and drinking water. The issues are being reviewed on how to improve the conditions.



## Water and Sanitation

### Achievements and Impacts

- In Adjumani, average water coverage was 21 l/p/d this week. It dropped from 23 l/p/d of 2 weeks ago due to new arrivals and consequent population increase.
- In Arua, the average water supply across Rhino camp settlement remained at 17.9 l/p/d, household sanitation coverage rose from 71% to 75% coverage after completion of additional 90 PSN latrines within the week by IOM.
- In Kiryandongo, water is still at 15 litres per person per day, and latrine coverage is at 1:14. The 50 pit latrines for PSNs that are under construction are in completion stage with doors being fixed onto them. This will greatly improve the sanitation in Kiryandongo.



## Shelter / Infrastructure

- In Arua, UNHCR continued to monitor the construction of the infrastructure projects to ensure good quality works. All works at 41 sites are finishing stages. Final documentation was being prepared for the various works.
- In Adjumani, a sudden storm on 5 June 2015 evening seriously damaged the entire roof structure of Ayiri Health Centre in Maaji settlement (new site) and two staff accommodation tents were affected as well. An assessment of the damage has been made and DRC-DDG is expected to start working on the rehabilitation of the roof structure. Two new tents have been issued to MTI by UNHCR for the staff accommodation.



## Community Empowerment, Self-reliance and Environment

### Achievements and Impacts

- World Environment Day celebrations took place in Mireyi refugee settlement on 5 June, under Adjumani District Local Government coordination. National theme was "35 million people, limited resources, consume with care". LWF planted and protected 1,294 delonix tree seedlings in Ayilo 1 (500) and Nyumanzi (794) refugee settlements under its avenue tree planting program for refugees. The trees were planted by the refugee groups under cash for work arrangement. The trees will act as shade, beautification and environmental protection.
- In Kiryandongo, refugee community actively participating through exhibition, Music, Dance, Drama and tree planting at settlement level.
- In Arua, DRC-DDG conducted Environment Baseline survey with sample size of 300 respondents (150 m, 150 f). Analysis is yet to be done.

## Working in partnership

OPM and UNHCR are being supported by partners on the ground:

### Kiryandongo refugee settlement

Government partners: OPM, Kiryandongo District Local Government (KDLG) and the Uganda Police Force.

Humanitarian partners: Action Africa Help Uganda (AAH-U), Action Contre la Faim (ACF), AIRD, DRC-DDG, FAO, Inter-Aid Uganda (IAU), International Rescue Committee (IRC), Real Medicine Foundation (RMF), SP, Transcultural Psychosocial Organization Uganda (TPO), UNFPA, UNICEF, WFP and WTU.

### West Nile



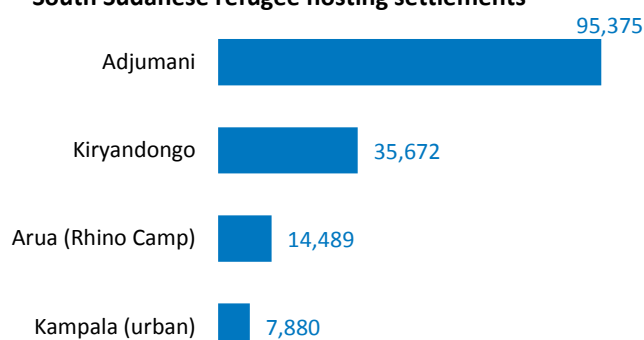
Government partners in all locations: OPM, Adjumani, Arua and Koboko DLG authorities, various technical departments, and Uganda Police Force.

Adjumani humanitarian partners: AAH-U, ACF, ACORD, ADRA, Welthungerhilfe (WHH)/Concern Worldwide(CWW) as Alliance 2015, Baylor, Caritas, Catholic Relief Services (CRS), DRC-DDG, HelpAge International, IOM, LWF, Marie Stopes, MSF-F, MTI, OXFAM, PLAN, SCIU, UNFPA, UNICEF, URCS/ICRC, TPO, War Child Canada, WFP, WHO, WTI and WVI.

Arua humanitarian partners: ADRA, AIRD, Care International, Caritas, International Aid Services (IAS), DRC-DDG, Global Refuge International (GRI), Humedica, Malteser international, MTI, Oxfam, Rural Initiative for Community Empowerment (RICE), SCIU, ZOA, UNFPA, UNICEF, URCS/ICRC and WFP, WTU, Touch Africa.

## BASIC DATA VISUALIZATION:

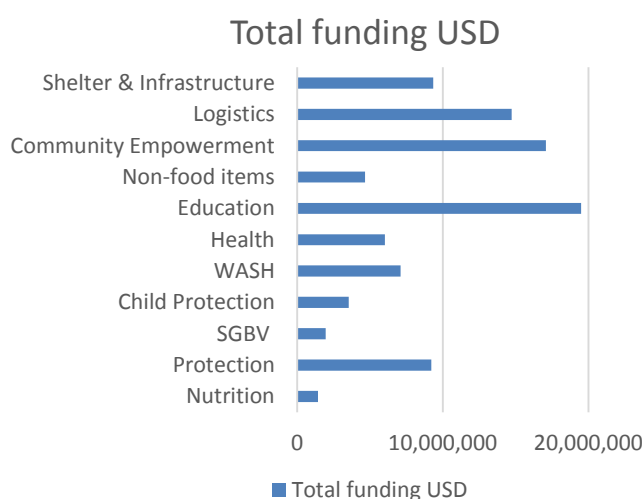
### South Sudanese refugee hosting settlements



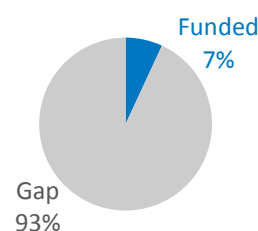
### 2015 Interagency South Sudan Regional Refugee Response Plan - Uganda needs: USD 220,607,768



Funded 11 %



### 2015 UNHCR Uganda Supplementary Appeal funding request: USD 99,447,418



#### Contacts:

Charlie Yaxley, Associate External Relations Officer, [yaxley@unhcr.org](mailto:yaxley@unhcr.org), Tel: +256 (0)776 720045

#### Links:

[South Sudan Regional portal](#)- [Twitter](#)- [South Sudan Stories](#)