

## UNHCR UGANDA

### UPDATE FOR THE SOUTH SUDAN EMERGENCY

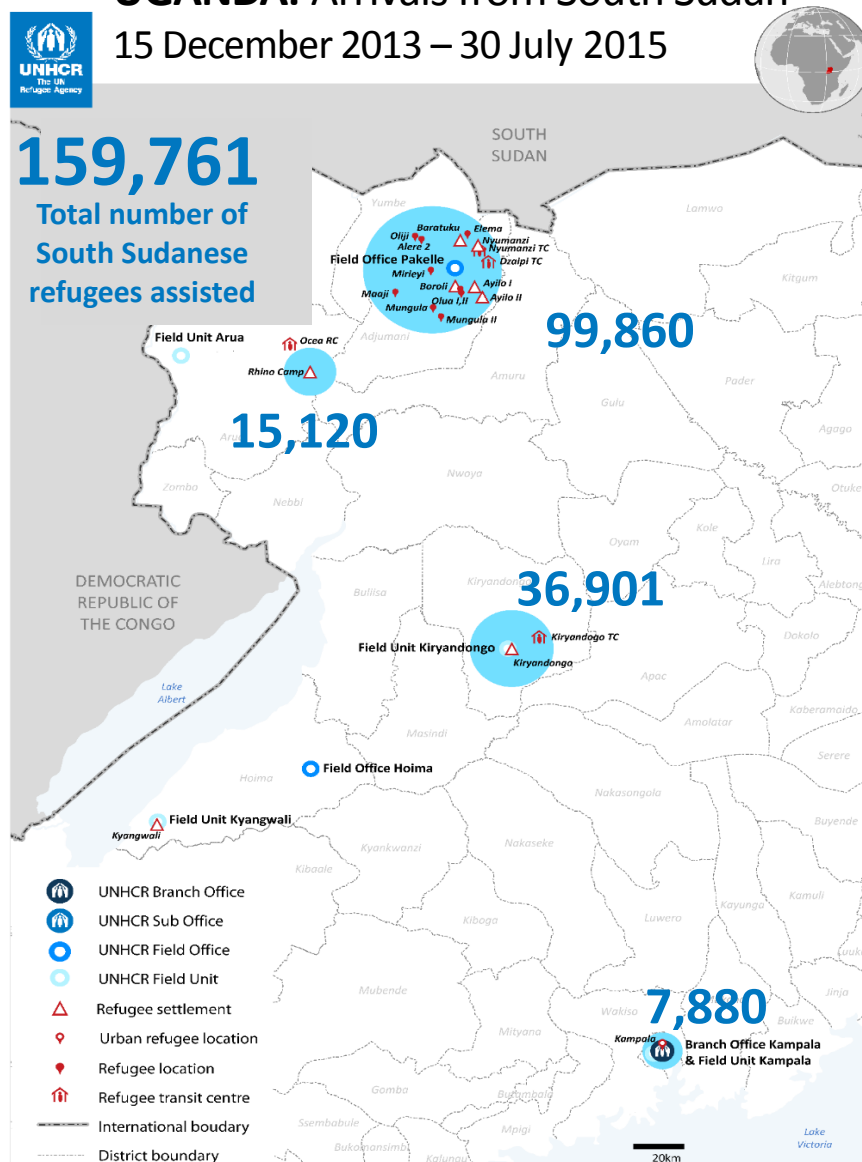
24 - 30 July 2015

### HIGHLIGHTS

- A total of **159,761** South Sudanese refugees have been assisted in Uganda since the influx began in mid-December 2013, including **99,860** in Adjumani, **15,120** in Arua, **36,901** in Kiryandongo and **7,880** (as of 18 June) in Kampala.
- A cholera outbreak was reported in Arua District. As at 27th July, a cumulative total of 29 cases had been reported, with no deaths. So far refugees have not been affected. Measures to contain the outbreak are ongoing by the Ministry of Health and UNHCR in Arua.
- Since all refugee settlements in Adjumani are full aside from Maaji settlement, OPM and UNHCR held a meeting with Dinka new arrival representatives at Nyumanzi Transit Centre on 22<sup>nd</sup> July to explain the options available for their relocation. The allocation of settlements to newly arriving refugees continues to be affected by tensions between different ethnic refugee groups. The Government and UNHCR are attempting to mediate these concerns and to put in place peaceful coexistence initiatives.

### UGANDA: Arrivals from South Sudan

15 December 2013 – 30 July 2015



# UPDATE ON ACHIEVEMENTS

## Operational Context



New arrivals received at Ocea Reception centre@UNHCR.Taliwaku.M

- In Adjumani, average new arrivals (60 per day) are still high with the peak of 99 on Monday 27th July 2015, leading to Nyumanzi Transit Centre's current population of 3,857, near to its capacity.
- In Arua, the local government (Arua district) together with OPM and UNICEF support, conducted a training for refugees on birth registration. Also OPM will be responsible to ensure all those children registered acquire the short birth certificates and guide the individuals to acquire the official or as locally called as "long birth certificates" at Arua District at a cost or fee of 5,000.
- In Kiryandongo the distribution of UNIQLO donated clothes to all refugees was concluded with the 32 refugees and 10 children detained in Masindi prison receiving clothing items.

## Protection

### Persons with Specific Needs (PSNs)

- In Kiryandongo, a team comprising of UNHCR, OPM, Inter Aid Uganda, Save the Children International, TPO, and War child Canada conducted a quarterly prison visit to Masindi where 32 inmates who are of concern to UNHCR were met. The detainees appreciated the clothes' donation and requested for other items especially sanitary related ones. The main challenge shared with the team was the backlog of cases that was leading to delays in court decisions on many of the cases.
- In Kiryandongo, vaccines were received and immunization at Kiryandongo Reception Center which had stopped for about 3 days resumed again. This means that families with children that needed immunization before they could be registered are now being registered.

## Child Protection

- In Kiryandongo, the Child Protection Working Group (CPWG) conducted a field visit to all schools in Kiryandongo settlement to discuss with the head teachers the way forward on how to make the talking compounds more functional and assess general child protection concerns affecting children in schools. Main issues raised and observed included; poor quality of hand washing facilities, overcrowding in some schools, high pupil to teacher ratio, lack of furniture especially for early childhood development centres in primary schools and water points that are shared with the community are difficult for children to access while in school

## Sexual and Gender-Based Violence (SGBV)

- In Adjumani, through LWF, 12 SGBV survivors, who are beneficiaries of cash grants for their businesses, were followed up on to establish their progress in the settlements of Baratuku (2), Ayilo (5), and Boroli (5). These business women have engaged in the selling of milk and general merchandise getting a profit of between 3000 - 5000 UGX daily. They use the profit to provide additional food for the family and buying other essential items.

## Education

### Achievements and Impacts

- In Arua, assorted scholastic and instructional material procured (27,479 exercise books of 96 pages, 14,445 ball pens, 13,282 pencils, 42 cartons of chalk, 412 teachers preparation books, 07 reams of manila papers, 07 carton of coloured chalks, 21 packets of marker pens, 70 pieces of dusters and 100 pieces of plastic rulers) with support from UNHCR to Windle trust Uganda were distributed to eight primary Schools and 30 orphaned vulnerable children (OVCs) in Rhino camp settlement. The schools supported were Yoro, Siripi, Ariwa, Odobu, Tika, Olujobo, Ocea, and Wanyange primary schools.

## Health

### Achievements and Impacts

- In Adjumani, the health status of refugees remained stable. Health indicators remained within acceptable sphere standards as demonstrated by crude and under five mortality rates at 0.1/ 10,000 and 0.2/10,000 per day compared to the thresholds of 1/10,000 and 2/10,000 per day respectively. Malaria remained the major cause of outpatient consultations and in-patient admissions. Despite its high incidence rate, the case fatality rate remained relatively low, at about 0.5%.
- In Arua, the health team in the 04 health facilities carried out routine immunization with details of 788 vaccines administered included; BCG, measles, DPT, TT, PCV, Polio and vit A.
- The medicines for the second quarter (March-June 2015) were delivered and handed over to the Health partners on 21 July 2015 Kiryandongo settlement.

## Food Security and Nutrition

### Achievements and Impacts

- In Adjumani, 436 cases presented with some form of malnutrition, 71% of whom were refugees. The majority of cases were children aged between 6 and 59 months. All the cases received 3 kg of 'super cereals plus' at the supplementary feeding centre for home consumption. Current recovery rates area at 96% and 91% for refugees

and nationals respectively. There were 72 severely malnourished children in the outpatient feeding programme. A total of 25 new cases presented with severe acute malnutrition, 80% of whom were refugees. The average weight gain reported for the severe acute malnourished children was 5 grams per body weight per day.

- In Arua, 2,037 children were nutritional screened (1,022 refugees, 1,015 nationals) for children aged between 6-59 months. Records obtained reveals; 36 (18 refugees, 18 nationals) new clients enrolled on SFP, 20 discharged cured supplementary feeding program (SFP) (17 refugees, 03 nationals), 46 (33 refugees, 13 nationals) enrolled for therapeutic feeding program (TFP) and 04 discharged (02 refugees and 02 national) cured.



## Water and Sanitation

### Achievements and Impacts

- In Adjumani, routine monitoring of the functionality of boreholes was conducted in Ayilo I, Nyumanzi and Ayilo II. It was found that two boreholes: DWD 45274, and DWD 45285 were non-functional, plans to repair them is under way. The under-performance of the motorized water system in Nyumanzi Settlement has resulted into low water supply in Block E. The solar system's pumping duration is not enough to meet the current demand for water. The system requires fuel to run the generator in order meet demand.
- In Arua, the average portable water supply across Rhino camp was 17.9 litres per person per day supplied by 46 functional boreholes with hand-pumps and 08 motorized water supply systems.



## Shelter / Infrastructure

### Achievements and Impacts

- In Adjumani, A joint Technical monitoring of infrastructural Projects was conducted in Adjumani settlements by OPM, UNHCR, IPs and ADLG to assess the progress and quality of the works of various projects.
- In Arua, a joint Technical monitoring of infrastructural Projects (buildings and mechanized roads) constructed under South Sudanese emergency was conducted in Rhino Camp settlement by UNHCR, DRC-DDG, OPM and ArDLG to see the progress and if needed provide technical guidance to contractors.

## Working in partnership

OPM and UNHCR are being supported by partners on the ground:

### Kiryandongo refugee settlement

Government partners: OPM, Kiryandongo District Local Government (KDLG) and the Uganda Police Force.

Humanitarian partners: Action Contre la Faim (ACF), Concern Worldwide (CWW), AIRD, Inter-Aid Uganda (IAU), International Rescue Committee (IRC), Real Medicine Foundation (RMF), Samaritan's Purse (SP), Transcultural Psychosocial Organization Uganda (TPO), UNICEF, UNWFP, Save the Children International (SCI), Feed the Hungry, Windle Trust Uganda (WTU), Danish Refugee Council (DRC), Uganda Red Cross Society (URCS), Africa Development Corps (ADC) and War Child Canada.

### West Nile

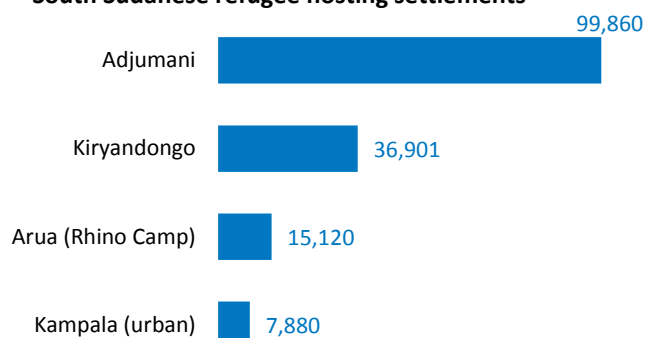
Government partners in all locations: OPM, Adjumani, Arua and Koboko DLG authorities, various technical departments, and Uganda Police Force.

Adjumani humanitarian partners: AAH-U, ACF, ACORD, ADRA, Welthungerhilfe (WHH)/Concern Worldwide(CWW) as Alliance 2015, Baylor, Caritas, Catholic Relief Services (CRS), DRC-DDG, HelpAge International, IOM, LWF, Marie Stopes, MSF-F, MTI, OXFAM, PLAN, SCiU, UNFPA, UNICEF, URCS/ICRC, TPO, War Child Canada, WFP, WHO, WTI and WVI.

Arua humanitarian partners: ACAV, ADRA, AIRD, Care International, Caritas, Concern World Wide, International Aid Services (IAS), IOM, DRC-DDG, Global Refuge International (GRI), KATO, Malteser international, MTI, NRC, Oxfam, SCiU, URCS/ICRC, Touch Africa, WTI, War Child Canada, WFP, Rice and UNICEF.

## BASIC DATA VISUALIZATION:

### South Sudanese refugee hosting settlements

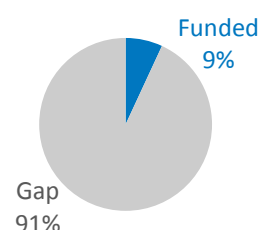


### 2015 Interagency South Sudan Regional Refugee Response Plan - Uganda needs: USD 220,607,768

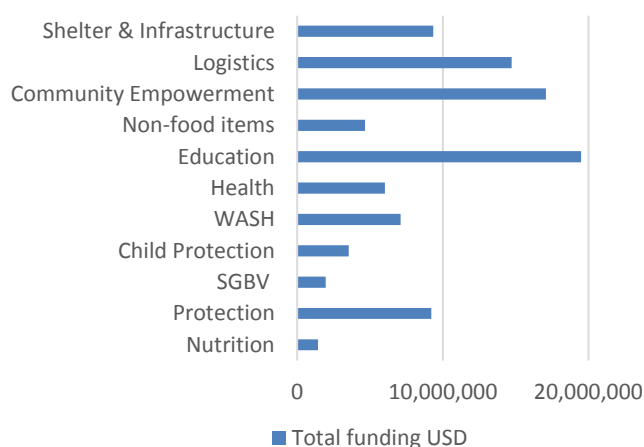


Funded 11 %

### 2015 UNHCR Uganda Supplementary Appeal funding request: USD 99,447,418



### Total funding USD



#### Contacts:

Charlie Yaxley, Associate External Relations Officer, [yaxley@unhcr.org](mailto:yaxley@unhcr.org), Tel: +256 (0)776 720045

Abdelrahman JABER, Associate Information Management officer, [jaber@unhcr.org](mailto:jaber@unhcr.org), Tel: +256(0)772 707057

#### Links:

[South Sudan Regional portal](#)- [Twitter](#)- [South Sudan Stories](#)



# Uganda - South Sudan Situation as of (30 July,2015)

Info-graphic and statistics

## Total

Pre 15 December 2013    **Post 15 December 2013**

22,264  
Refugees

159,761  
Refugees  
Assisted

Registered : 159,150 | Unregistered: 611

## Key Statistics for (Post 15 December 2015)



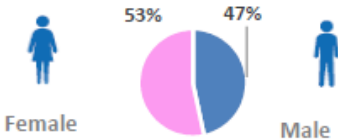
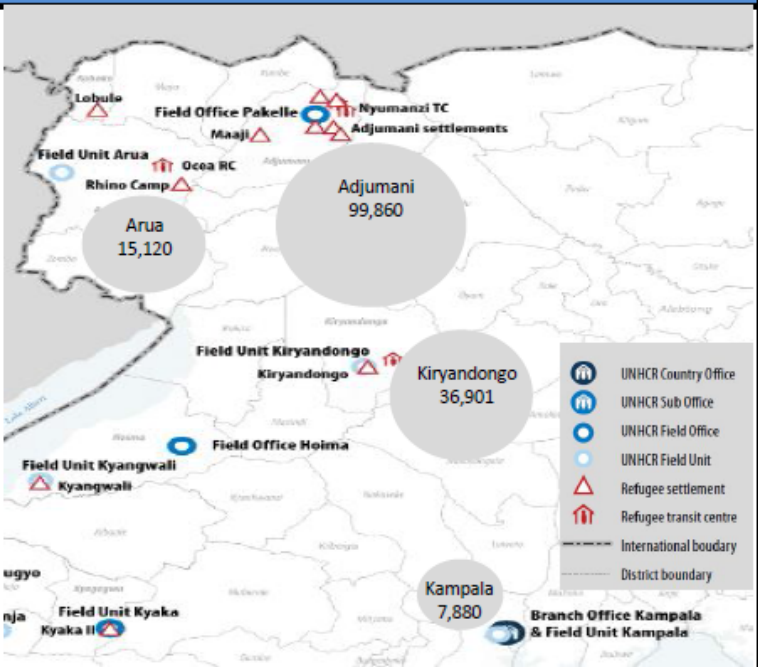
**64 %**  
of the population are  
**Children <18**  
102,247 individuals



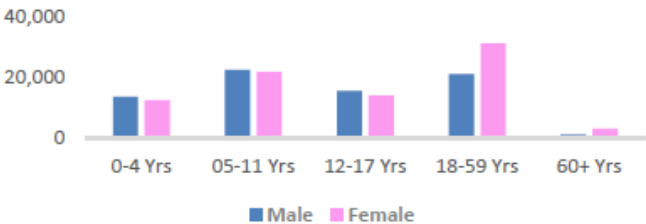
**86 %**  
of the population are  
**Women and Children**  
137,394 individuals



**03 %**  
of the population are  
**Elderly**  
4,792 individuals



Age and Gender Breakdown



New arrival trend aince 1st January 2015



\* Registered : person of concern who went through level 1/ level 2 registration with government , \* Unregistered : new arrivals pending registration

\* Source : Government (OPM) , Refugee Information Management System (RIMS)

For inquiries please email: [Jaber@unhcr.org](mailto:Jaber@unhcr.org) | Assoc. Information Management Officer | portal : <http://data.unhcr.org/SouthSudan/regional.php>

Print Date 29/07/2015 17:39