

MONTHLY REGISTRATION REPORT – AUGUST 2011

UNHCR SUB-OFFICE DADAAB



OVERVIEW

- At the end of August 2011, the total camp population in Dadaab stood at 424,554 persons.
- With drought conditions persisting in Somalia, Somali asylum-seekers are arriving into the Dadaab camp complex at a rate approaching 1,200 persons daily, a slight decrease from July 2011 when the daily average was in excess of 1,300 daily.
- In August, 36,543 refugees were received in the camp reception centres, wrist-banded and issued assistance package.
- 29,772 were registered by the DRA/UNHCR, representing the single highest registration month recorded in Dadaab.

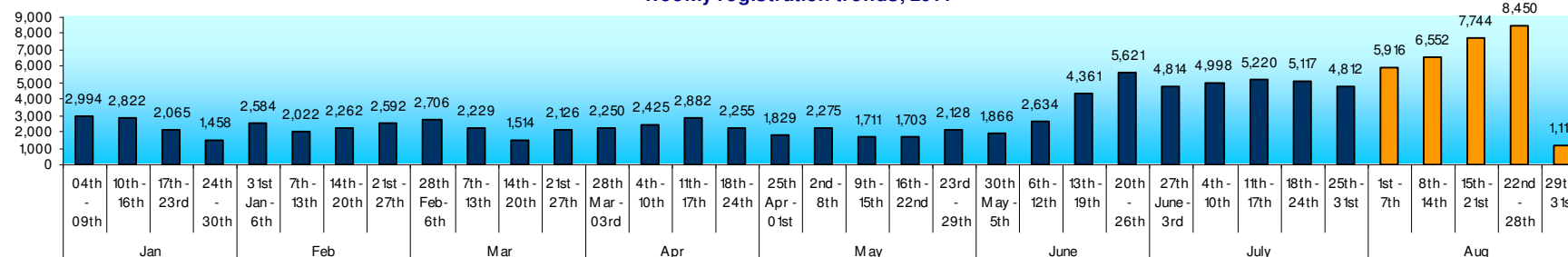
REGISTRATION TRENDS

- A total of 29,772 individuals were registered in August 2011 – the highest single month of registration processing in Dadaab for 2011.
- 116,047 individuals have been registered since 1 January 2011.
- The average waiting time for registration was 19.4 days across the 3 camps. The longest average waiting time is for Hagadera camp, with 22 days between the date of arrival and the date of registration.
- Ifo recorded the shortest waiting time, with 14 days between arrival and registration.

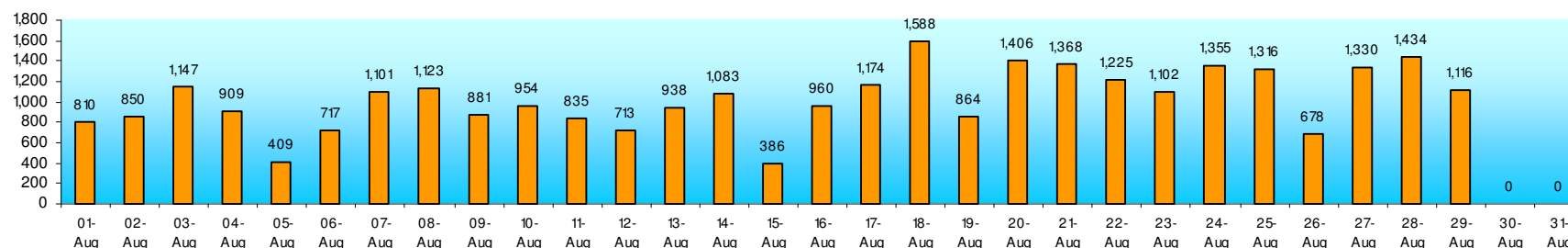
Period	Individuals registered			
	Overall	Monthly average	Weekly average	Daily average*
1 January to 30 June 2011	64,357	10,726	2,504	511
July 2011	21,918	21,918	4,949	783
August 2011	29,772	29,772	6,723	1,027
1 January to 31 August 2011	116,047	14,506	3,364	601

* days worked

Weekly registration trends, 2011



Daily registration figures, August 2011



For any questions, please contact shahin@unhcr.org or kibui@unhcr.org

Data generated from UNHCR proGres database following full registration by the Kenyan Department of Refugee Affairs and UNHCR, in accordance with domestic Kenyan law.

DEMOGRAPHIC DATA

Sex/Age breakdown, by nationality

- 15,454 women were registered in August 2011, representing 51.9% of total individuals registered
- Minors (persons under the age of 18) totalled 18,970 individuals, or 63.7% of the registered population, with 7,970 children between 0-4 years of age (26.8%)
- 98.9% of all newly registered individuals originated from Somalia

Country of origin	Age group										Overall total		Total by sex			
	0-4 years		5-11 years		12-17 years		18-59 years		60+ years		Inds.	%	F	%	M	%
Ethiopia	22	28	22	27	13	18	56	55	9	3	253	0.8%	122	0.4%	131	0.4%
DR Congo								2			2	0.0%	0	0.0%	2	0.0%
Somalia	3,899	4,009	3,959	4,194	1,258	1,471	5,571	3,950	609	530	29,450	98.9%	15,296	51.4%	14,154	47.5%
Sudan	3	9	9	12	10	7	14	3			67	0.2%	36	0.1%	31	0.1%
Total	3,924	4,046	3,990	4,233	1,281	1,496	5,641	4,010	618	533	29,772	100.0%	15,454	51.9%	14,318	48.1%

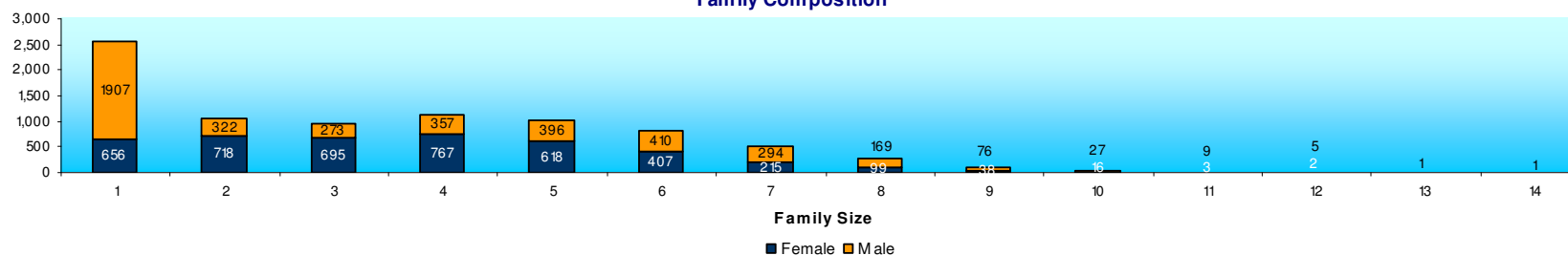
Age group	Individuals	%
0-4 years	7,970	26.8%
5-11 years	8,223	27.6%
12-17 years	2,777	9.3%
18-59 years	9,651	32.4%
60+ years	1,151	3.9%
Total	29,772	100.0%

Family Composition

- A total of 8,481 households, comprising 29,772 individuals, were registered in August
- The average family size was 3.5 individuals per household
- Female-headed households represented 49.92% of all registered households
- The single largest household group remains single men, which represent 1,907 households, or 22.49% of all registered households in August.

Family size	Total	%	Female headed	%	Male headed	%
1	2563	30.22%	656	7.73%	1,907	22.49%
2	1040	12.26%	718	8.47%	322	3.80%
3	968	11.41%	695	8.19%	273	3.22%
4	1124	13.25%	767	9.04%	357	4.21%
5	1014	11.96%	618	7.29%	396	4.67%
6	817	9.63%	407	4.80%	410	4.83%
7	509	6.00%	215	2.54%	294	3.47%
8	268	3.16%	99	1.17%	169	1.99%
9	114	1.34%	38	0.45%	76	0.90%
10	43	0.51%	16	0.19%	27	0.32%
11	12	0.14%	3	0.04%	9	0.11%
12	7	0.08%	2	0.02%	5	0.06%
13	1				1	0.01%
14	1				1	0.01%
Total	8,481	100.00%	4,234	49.92%	4,247	50.08%

Family Composition



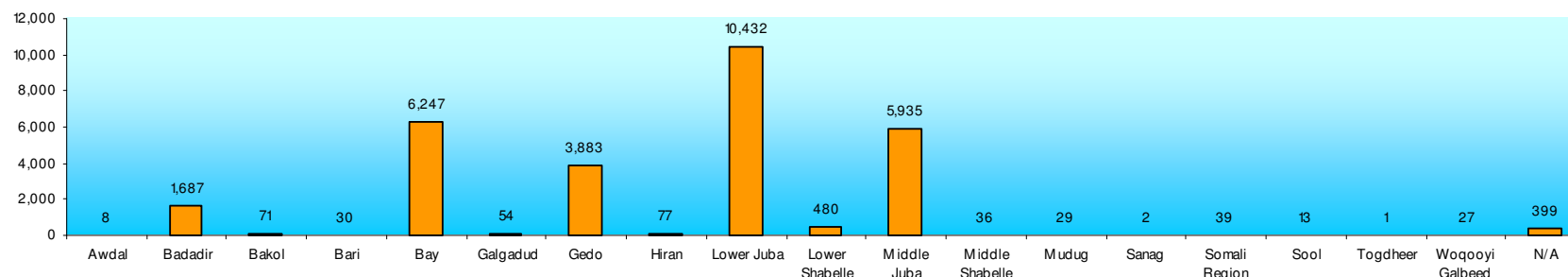
POPULATION PROFILE

Ethnicity, Areas of Origin breakdown for Somali nationals

- The largest Somali ethnic groups represented are Ogaden (25.01% of population), followed by the Rahan-Weyn (20.22%). There has been a notable increase, from July to August, in Somalis belonging to the Darod (10.50% to 14.32%) and Hawiye (13.03% to 16.62%) groups.
- Only ethnic groups numbering 100 or more individuals are specified; other ethnic groups are included in 'Other'.
- 76.7% of all newly registered individuals from Somalia originated from Bay, Lower, and Middle Juba provinces, areas under control of Al-Shabaab and at the center of the current drought.
- A sharp increase from persons originating from Lower Juba has been noted, from 21.79% of all Somalis registered in July to 35.42% of those registered in August.

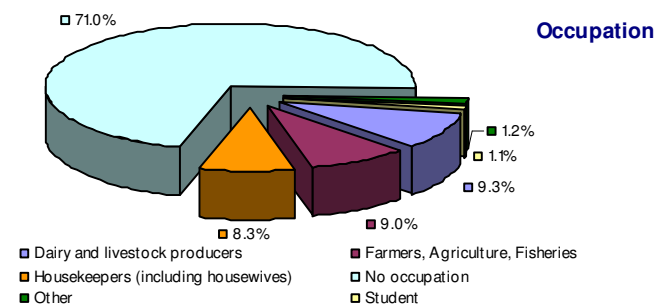
Ethnic origin	Inds	%
Absame	131	0.44%
Ashraaf, Ashraf	356	1.21%
Dagbare	266	0.90%
Darod	4,216	14.32%
Digil, Rohawin	515	1.75%
Dir	1,202	4.08%
Hawiye	4,895	16.62%
Ogaden	7,366	25.01%
Other	2,580	8.76%
Rahan-weyn	5,956	20.22%
Shekhal	524	1.78%
Somali Bantu	1,443	4.90%
Total	29,450	100.00%

Province of origin, Somalia



Occupation

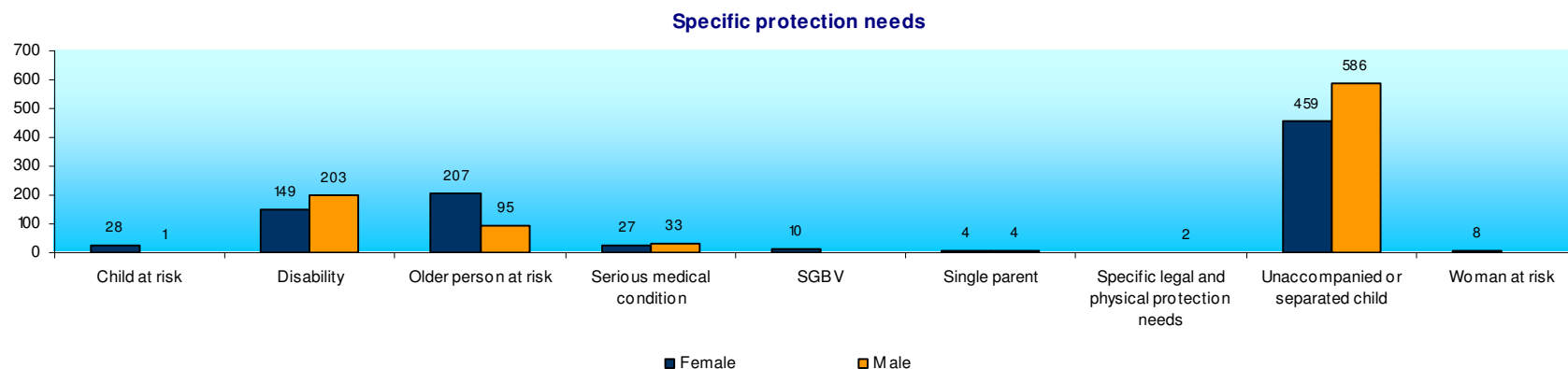
- 18.3% of the new arrivals who were registered in August stated that they were either pastoralists or farmers.
- 71.0% of the entire registered population reported having no occupation. With men of working age (5,506 persons) representing 18.49% of the entire population, the high rate of unskilled persons arriving is consistent with the general population profile.



PROTECTION OVERVIEW

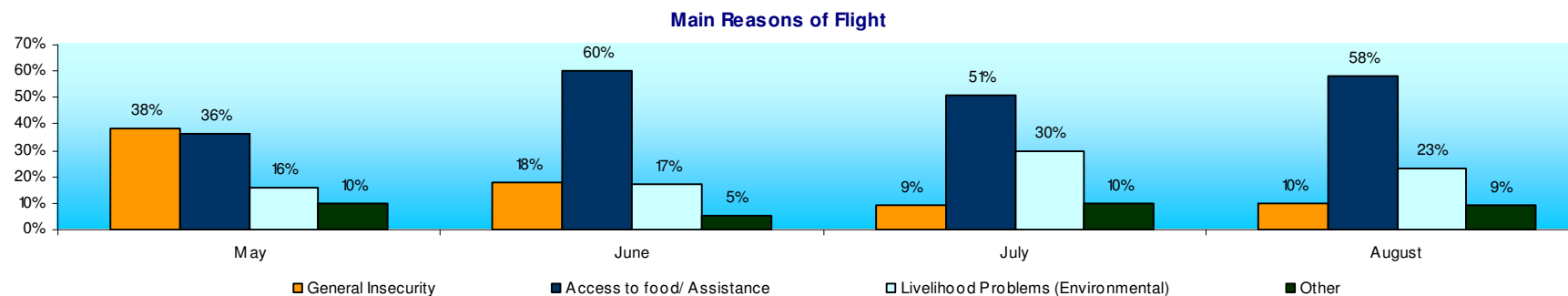
Specific protection needs

- A total of 1,816 specific needs were identified in August for new arrivals. Specific needs counts do not necessarily correspond to individuals, as a single individual can have more than one specific protection need.
- The increase in identification of specific protection needs reflects the training and emphasis on vulnerability screening of July 2011.
- Unaccompanied children (UAMs) remain the most commonly identified specific need, with a count of 1,045 UAMs identified (459 girls, and 586 boys).



Reasons for Flight

- The most commonly cited reason for flight remains access to food and assistance, representing 58% of all sampled households (8,398 altogether). This represents a small increase compared to the month of June 2011.
- 23% of all household sampled cited livelihood concerns (environmental) as their main reason for flight
- General insecurity is cited as the main reason for flight for 9 of all households, even though it remains a **strong compounding flight factor for all households**.



CONTINUOUS REGISTRATION

Routine continuous registration activities

- 4,014 continuous registration cases were attended to in the 3 camp offices
- Routine continuous registration activities include: reactivations, merging/splitting of households and records, verification of cases scheduled for resettlement departure, litigations on bio-data change requests, etc.
- DRA activities remain suspended at continuous registration due to high rate of influx of new arrivals.

Camp	Newborn registration	Ration card management	Address changes	Routine cases	Total
Hagadera	399	252	83	238	972
Dagahaley	653	463	56	464	1,636
Ifo	511	495	107	293	1,406
Total	1,563	1,210	246	995	4,014

GOVERNMENT CAPACITY-BUILDING

- 1 training session on international protection was held on Saturday 13 August, with 17 participants from the DRA
- Equipment and infrastructure were improved at the DRA registration site, including the installation of a centralized server allowing consolidation of DRA data on a daily basis.
- An additional shed was erected to allow more DRA fingerprinting staff to work concurrently.