

## Dollo Ado Population Statistical Report

As of 22 Oct 2011

Figure 1.1 - Total Refugee Population in Dollo Ado

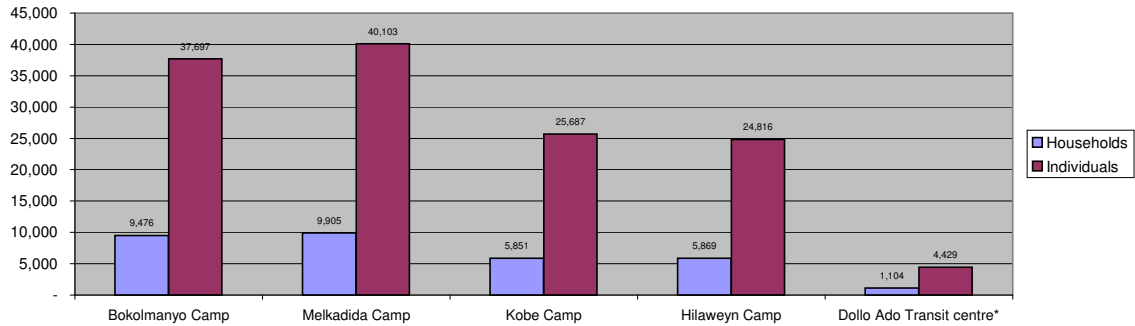
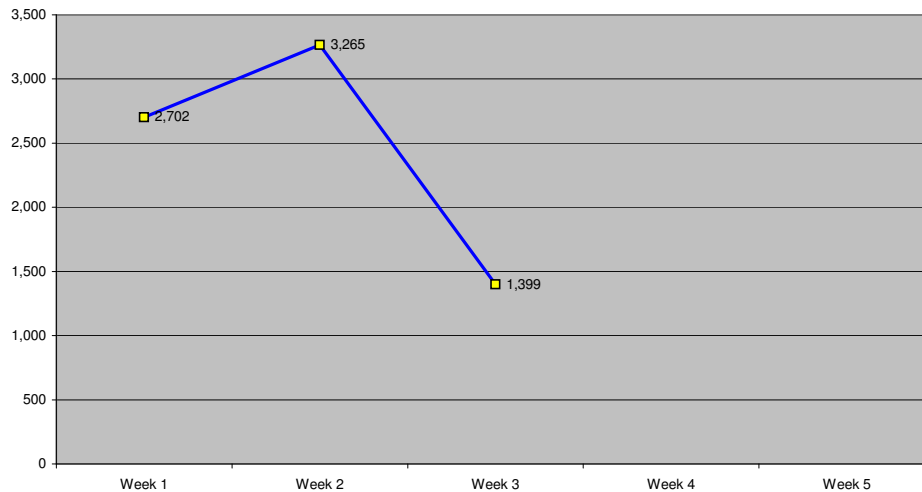


Table 1.1 - Total Refugee Population in Dollo Ado

Site/Camp	Current Total		As of 31 Dec 2010		Arrivals in 2011	
	Households	Individuals	Households	Individuals	Households	Individuals
Bokolmany Camp	9,476	37,697	3,988	14,988	5,488	22,709
Melkadida Camp	9,905	40,103	6,452	25,491	3,453	14,612
Kobe Camp	5,851	25,687	n/a	n/a	5,851	25,687
Hilaweyn Camp	5,869	24,816	n/a	n/a	5,869	24,816
<b>Camp Sub-Total</b>	<b>31,101</b>	<b>128,303</b>	<b>10,440</b>	<b>40,479</b>	<b>20,661</b>	<b>87,824</b>
Dollo Ado Transit centre*	1,104	4,429	n/a	n/a	1,104	4,429
<b>Temporary Locations Sub-Total</b>	<b>1,104</b>	<b>4,429</b>	<b>n/a</b>	<b>n/a</b>	<b>1,104</b>	<b>4,429</b>
<b>GRAND TOTAL ALL LOCATIONS</b>	<b>32,205</b>	<b>132,732</b>	<b>10,440</b>	<b>40,479</b>	<b>21,765</b>	<b>92,253</b>

\* Individuals currently in the Transit Centre. All new arrivals are registered at the Transit Centre and are subsequently relocated to the camps.

Figure 1.2 - New Arrivals at Reception Centre During Current Month (Weekly)



**Table 1.2 - Daily New Arrivals and Pre-registration by ARRA at the Reception Centre**

Date	Newly Arrived Individuals	Pre-registered by ARRA *
1-Oct-11	240	224
2-Oct-11		**
3-Oct-11	386	363
4-Oct-11	624	601
5-Oct-11	583	564
6-Oct-11	475	463
7-Oct-11	394	382
8-Oct-11	283	283
9-Oct-11		**
10-Oct-11	724	683
11-Oct-11	704	681
12-Oct-11	555	543
13-Oct-11	550	535
14-Oct-11	449	449
15-Oct-11	355	355
16-Oct-11		**
17-Oct-11	395	384
18-Oct-11	117	117
19-Oct-11	233	224
20-Oct-11	144	144
21-Oct-11	155	146
22-Oct-11		**
23-Oct-11		
24-Oct-11		
25-Oct-11		
26-Oct-11		
27-Oct-11		
28-Oct-11		
29-Oct-11		
30-Oct-11		
31-Oct-11		
<b>TOTAL THIS MONTH</b>	<b>7,366</b>	<b>7,141</b>

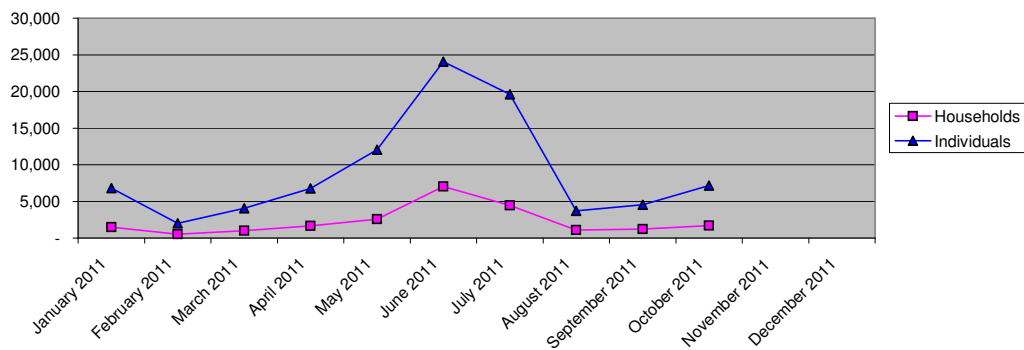
397

\* Pre-registration by ARRA is not necessarily done on the day of Arrival

\*\* Represent days when ARRA was not receiving Asylum seekers.

The number of those received during these days is include in the figure of next receiving day.

**Figure 1.3 - Pre-Registration Trends in 2011 (Reception Centre/ ARRA)**



Note: these are registration volumes by month, not cumulative figures.

**Table 1.3 - Pre-Registration Trends in 2011 (Reception Centre/ ARRA)**

Month	Households	Individuals
January 2011	1,502	6,792
February 2011	527	2,016
March 2011	1,019	4,072
April 2011	1,650	6,749
May 2011	2,587	12,045
June 2011	7,030	24,042
July 2011	4,463	19,610
August 2011	1,072	3,691
September 2011	1,215	4,563
October 2011	1,722	7,141
November 2011		
December 2011		
<b>Total</b>	<b>22,787</b>	<b>90,721</b>

**Table 1.4 - Registration & Relocation Trends in Transit Centre up to date**

Stage of Registration & Relocation	Individuals
Total individuals fully registered so far this month	7,906
Total individuals relocated to camp so far this month	4,250
Total Individuals fully processed (hold ration card), but not yet relocated	4,479

## Camp population by Age and Sex breakdown

*As of 22 Oct 2011*

Table 2.1 - ALL CAMPS Demographic Breakdown\*

Age Group	Sex				Total	
	Male	( % )	Female	( % )	Total	( % )
0 - 4	16,900	13.2%	16,431	12.8%	33,331	26.0%
5 - 11	20,243	15.8%	19,332	15.1%	39,575	30.8%
12 - 17	7,417	5.8%	6,726	5.2%	14,143	11.0%
18 - 59	13,735	10.7%	24,571	19.2%	38,306	29.9%
60 and above	1,494	1.2%	1,454	1.1%	2,948	2.3%
<b>Total ALL CAMPS</b>	<b>59,789</b>	<b>46.6%</b>	<b>68,514</b>	<b>53.4%</b>	<b>128,303</b>	<b>100.0%</b>

\* These total figures apply only to camps, not to the Transit Centre or Reception Centre

Figure 2.1 - ALL CAMPS Demographic Breakdown\*

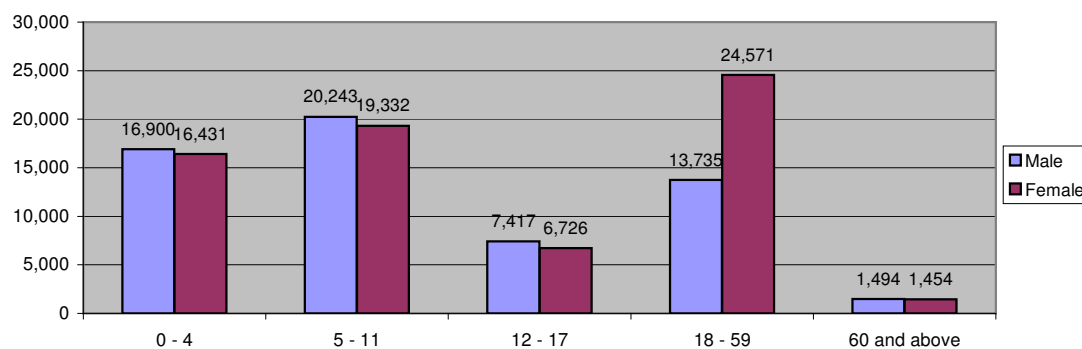
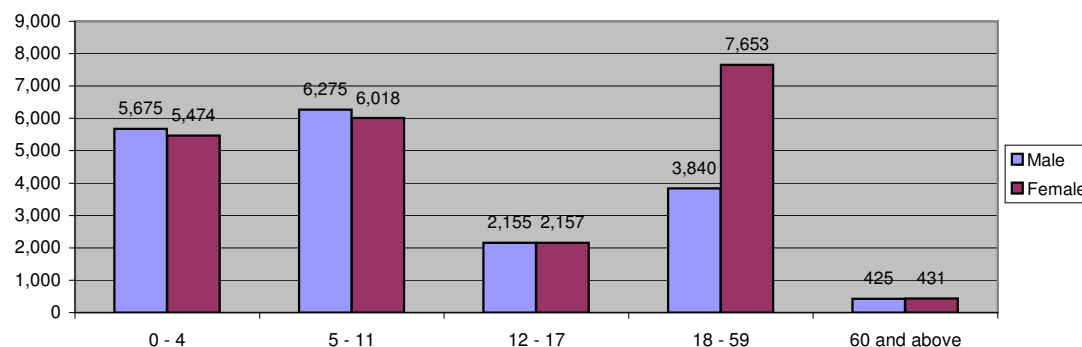


Table 2.2 - Melkadida Camp Demographic Breakdown

Age Group	Sex				Total	
	Male	( % )	Female	( % )	Total	( % )
0 - 4	5,675	14.2%	5,474	13.6%	11,149	27.8%
5 - 11	6,275	15.6%	6,018	15.0%	12,293	30.7%
12 - 17	2,155	5.4%	2,157	5.4%	4,312	10.8%
18 - 59	3,840	9.6%	7,653	19.1%	11,493	28.7%
60 and above	425	1.1%	431	1.1%	856	2.1%
<b>Total Malkadida</b>	<b>18,370</b>	<b>45.8%</b>	<b>21,733</b>	<b>54.2%</b>	<b>40,103</b>	<b>100.0%</b>

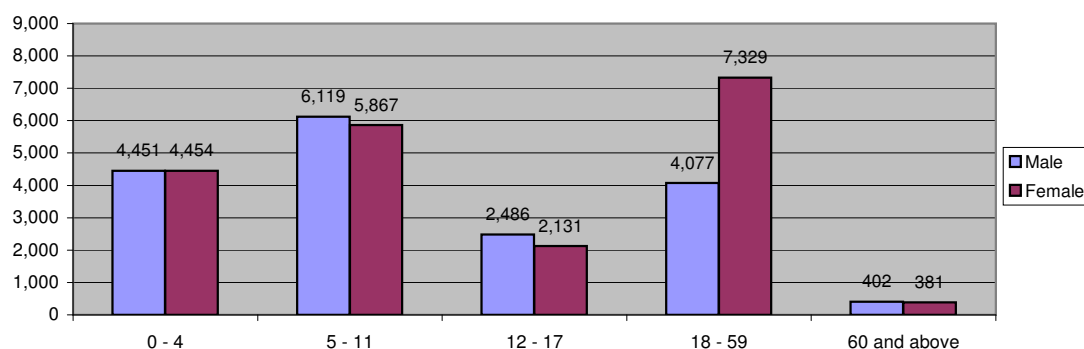
Figure 2.2 - Melkadida Camp Demographic Breakdown\*



**Table 2.3 - Bokolmanyo Camp Demographic Breakdown**

Age Group	Sex				Total	
	Male	( % )	Female	( % )	Total	( % )
0 - 4	4,451	11.8%	4,454	11.8%	8,905	23.6%
5 - 11	6,119	16.2%	5,867	15.6%	11,986	31.8%
12 - 17	2,486	6.6%	2,131	5.7%	4,617	12.2%
18 - 59	4,077	10.8%	7,329	19.4%	11,406	30.3%
60 and above	402	1.1%	381	1.0%	783	2.1%
<b>Total Bokolmanyo</b>	<b>17,535</b>	<b>46.5%</b>	<b>20,162</b>	<b>53.5%</b>	<b>37,697</b>	<b>100.0%</b>

**Figure 2.3 - Bokolmanyo Camp Demographic Breakdown\***



**Table 2.4 - Kobe Camp Demographic Breakdown**

Age Group	Sex				Total	
	Male	( % )	Female	( % )	Total	( % )
0 - 4	3,393	13.2%	3,210	12.5%	6,603	25.7%
5 - 11	4,051	15.8%	3,704	14.4%	7,755	30.2%
12 - 17	1,413	5.5%	1,195	4.7%	2,608	10.2%
18 - 59	3,109	12.1%	4,842	18.9%	7,951	31.0%
60 and above	390	1.5%	380	1.5%	770	3.0%
<b>Total Kobe</b>	<b>12,356</b>	<b>48.1%</b>	<b>13,331</b>	<b>51.9%</b>	<b>25,687</b>	<b>100.0%</b>

**Figure 2.4 - Kobe Camp Demographic Breakdown\***

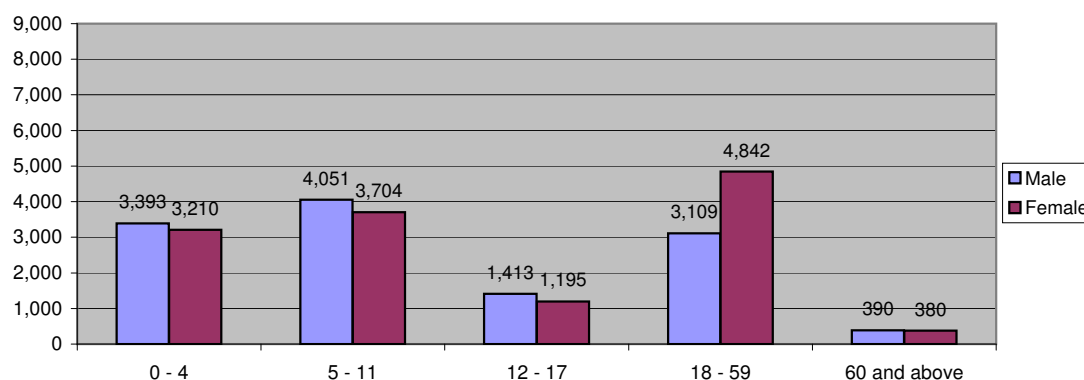


Table 2.5 - Hilaweyn Camp Demographic Breakdown

Age Group	Sex				Total	
	Male	( % )	Female	( % )	Total	( % )
0 - 4	3,381	13.6%	3,293	13.3%	6,674	26.9%
5 - 11	3,798	15.3%	3,743	15.1%	7,541	30.4%
12 - 17	1,363	5.5%	1,243	5.0%	2,606	10.5%
18 - 59	2,709	10.9%	4,747	19.1%	7,456	30.0%
60 and above	277	1.1%	262	1.1%	539	2.2%
<b>Total Hilaweyn</b>	<b>11,528</b>	<b>46.5%</b>	<b>13,288</b>	<b>53.5%</b>	<b>24,816</b>	<b>100.0%</b>

Figure 2.5 - Hilaweyn Camp Demographic Breakdown\*

