

Dollo Ado Population Statistical Report

As of 07 Nov 2011

Figure 1.1 - Total Refugee Population in Dollo Ado

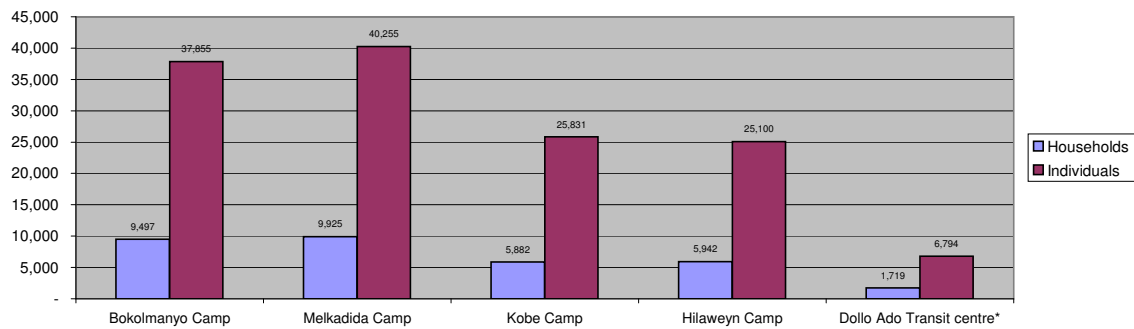


Table 1.1 - Total Refugee Population in Dollo Ado

Site/Camp	Current Total		As of 31 Dec 2010		Arrivals in 2011	
	Households	Individuals	Households	Individuals	Households	Individuals
Bokolmanyo Camp	9,497	37,855	3,988	14,988	5,509	22,867
Melkadida Camp	9,925	40,255	6,452	25,491	3,473	14,764
Kobe Camp	5,882	25,831	n/a	n/a	5,882	25,831
Hilaweyn Camp	5,942	25,100	n/a	n/a	5,942	25,100
Camp Sub-Total	31,246	129,041	10,440	40,479	20,806	88,562
Dollo Ado Transit centre*	1,719	6,794	n/a	n/a	1,719	6,794
Temporary Locations Sub-Total	1,719	6,794	n/a	n/a	1,719	6,794
GRAND TOTAL ALL LOCATIONS	32,965	135,835	10,440	40,479	22,525	95,356

* Individuals currently in the Transit Centre. All new arrivals are registered at the Transit Centre and are subsequently relocated to the camps.

Figure 1.2 - New Arrivals at Reception Centre During Current Month (Weekly)

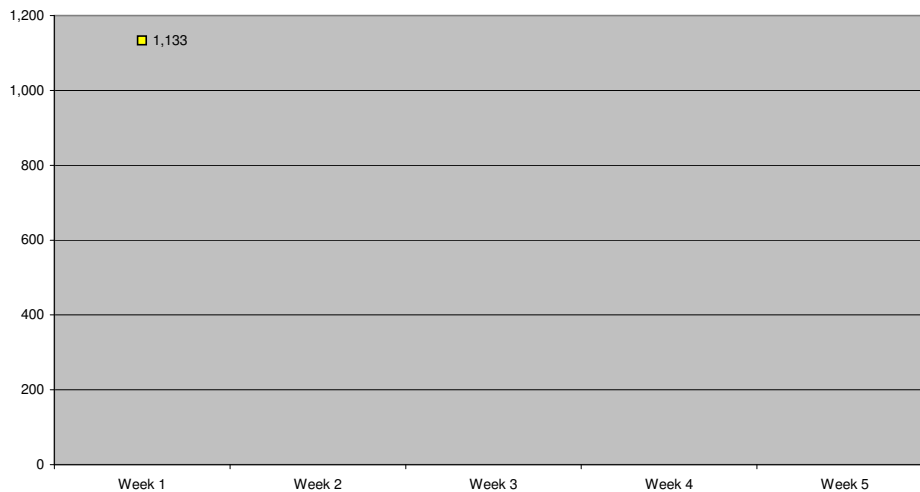


Table 1.2 - Daily New Arrivals and Pre-registration by ARRA at the Reception Centre

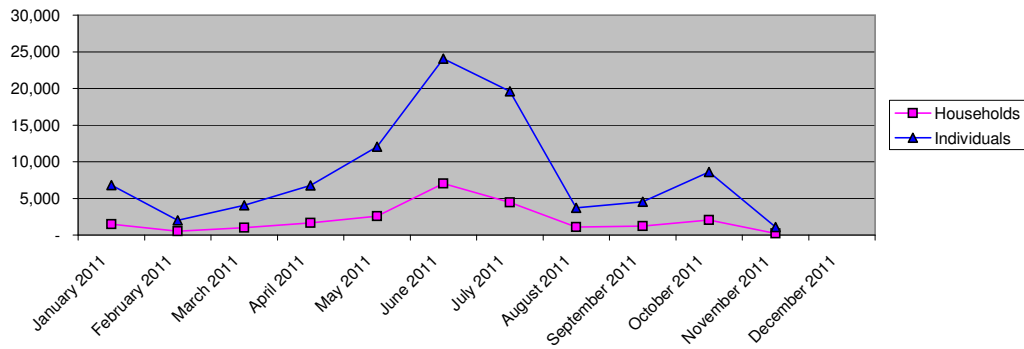
Date	Newly Arrived Individuals	Pre-registered by ARRA *
01-Nov-11	151	151
02-Nov-11	257	254
03-Nov-11	189	185
04-Nov-11	247	237
05-Nov-11		**
06-Nov-11		**
07-Nov-11	289	257
08-Nov-11		
09-Nov-11		
10-Nov-11		
11-Nov-11		
12-Nov-11		
13-Nov-11		
14-Nov-11		
15-Nov-11		
16-Nov-11		
17-Nov-11		
18-Nov-11		
19-Nov-11		
20-Nov-11		
21-Nov-11		
22-Nov-11		
23-Nov-11		
24-Nov-11		
25-Nov-11		
26-Nov-11		
27-Nov-11		
28-Nov-11		
29-Nov-11		
30-Nov-11		
TOTAL THIS MONTH	1,133	1,084

* Pre-registration by ARRA is not necessarily done on the day of Arrival

** Represent days when ARRA was not receiving Asylum seekers.

The number of those received during these days is include in the figure of next receiving day.

Figure 1.3 - Pre-Registration Trends in 2011 (Reception Centre/ ARRA)



Note: these are registration volumes by month, not cumulative figures.

Table 1.3 - Pre-Registration Trends in 2011 (Reception Centre/ ARRA)

Month	Households	Individuals
January 2011	1,502	6,792
February 2011	527	2,016
March 2011	1,019	4,072
April 2011	1,650	6,749
May 2011	2,587	12,045
June 2011	7,030	24,042
July 2011	4,463	19,610
August 2011	1,072	3,691
September 2011	1,215	4,563
October 2011	2,036	8,584
November 2011	231	1,084
December 2011		
Total	23,332	93,248

Table 1.4 - Registration & Relocation Trends in Transit Centre up to date

Stage of Registration & Relocation	Individuals
Total individuals fully registered so far this month	1,320
Total individuals relocated to camp so far this month	24
Total Individuals fully processed (hold ration card), but not yet relocated	6,636

Camp population by Age and Sex breakdown

As of 07 Nov 2011

Table 2.1 - ALL CAMPS Demographic Breakdown*

Age Group	Sex				Total	
	Male	(%)	Female	(%)	Total	(%)
0 - 4	16,289	12.6%	15,877	12.3%	32,166	24.9%
5 - 11	20,805	16.1%	19,897	15.4%	40,702	31.5%
12 - 17	7,681	6.0%	6,935	5.4%	14,616	11.3%
18 - 59	13,864	10.7%	24,714	19.2%	38,578	29.9%
60 and above	1,509	1.2%	1,470	1.1%	2,979	2.3%
Total ALL CAMPS	60,148	46.6%	68,893	53.4%	129,041	100.0%

* These total figures apply only to camps, not to the Transit Centre or Reception Centre

Figure 2.1 - ALL CAMPS Demographic Breakdown*

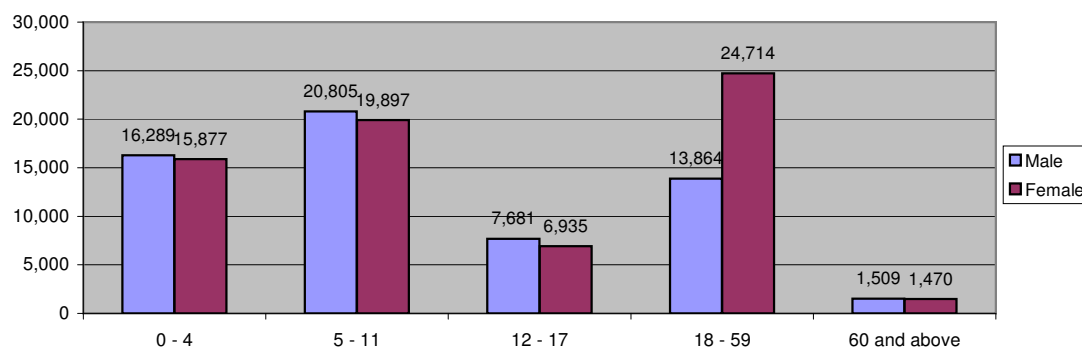


Table 2.2 - Melkadida Camp Dem		1452	5784			
	Sex				Total	
Age Group	Male	(%)	Female	(%)	Total	(%)
0 - 4	4,934	12.3%	4,757	11.8%	9,691	24.1%
5 - 11	6,794	16.9%	6,528	16.2%	13,322	33.1%
12 - 17	2,381	5.9%	2,333	5.8%	4,714	11.7%
18 - 59	3,917	9.7%	7,746	19.2%	11,663	29.0%
60 and above	432	1.1%	433	1.1%	865	2.1%
Total Malkadida	18,458	45.9%	21,797	54.1%	40,255	100.0%

Figure 2.2 - Melkadida Camp Demographic Breakdown*

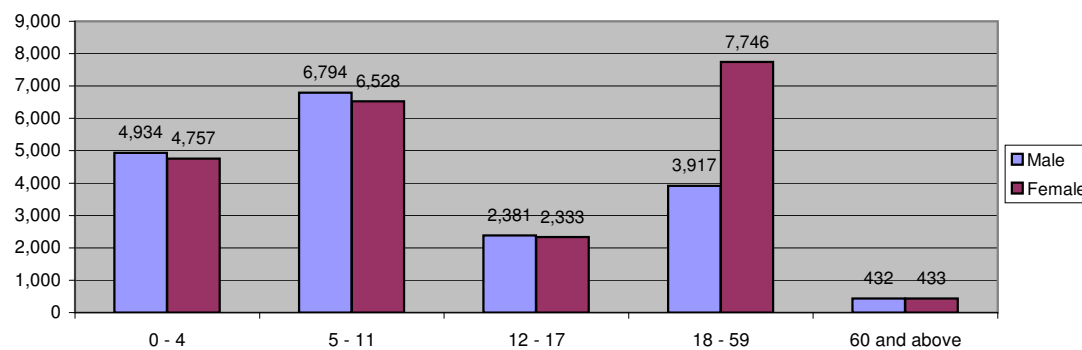


Table 2.3 - Bokolmany Camp Demographic Breakdown

Age Group	Sex				Total	
	Male	(%)	Female	(%)	Total	(%)
0 - 4	4,500	11.9%	4,508	11.9%	9,008	23.8%
5 - 11	6,130	16.2%	5,876	15.5%	12,006	31.7%
12 - 17	2,497	6.6%	2,140	5.7%	4,637	12.2%
18 - 59	4,085	10.8%	7,332	19.4%	11,417	30.2%
60 and above	405	1.1%	382	1.0%	787	2.1%
Total Bokolmany	17,617	46.5%	20,238	53.5%	37,855	100.0%

Figure 2.3 - Bokolmany Camp Demographic Breakdown*

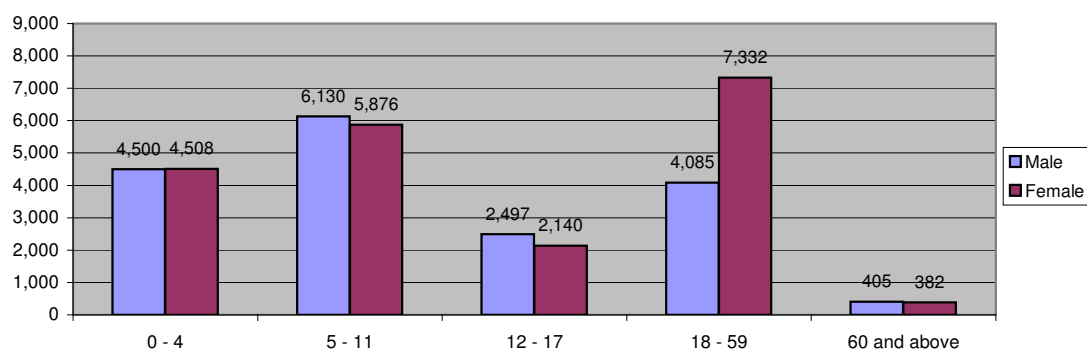
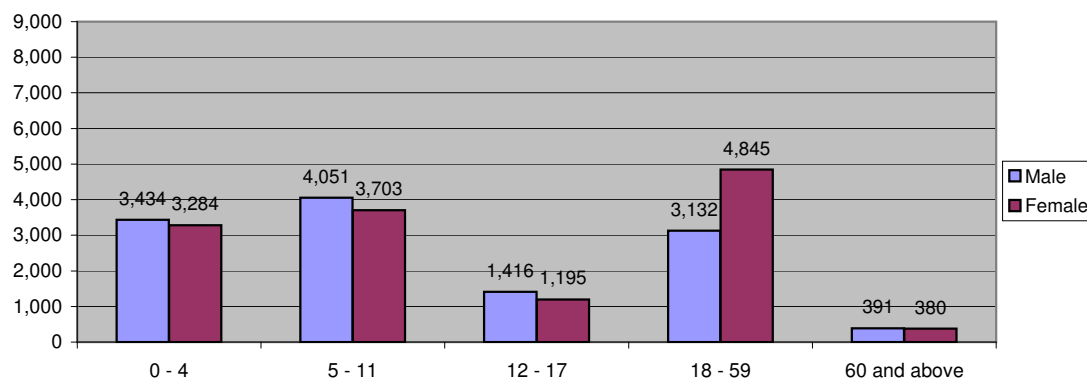


Table 2.4 - Kobe Camp Demographic Breakdown

Age Group	Sex				Total	
	Male	(%)	Female	(%)	Total	(%)
0 - 4	3,434	13.3%	3,284	12.7%	6,718	26.0%
5 - 11	4,051	15.7%	3,703	14.3%	7,754	30.0%
12 - 17	1,416	5.5%	1,195	4.6%	2,611	10.1%
18 - 59	3,132	12.1%	4,845	18.8%	7,977	30.9%
60 and above	391	1.5%	380	1.5%	771	3.0%
Total Kobe	12,424	48.1%	13,407	51.9%	25,831	100.0%

Figure 2.4 - Kobe Camp Demographic Breakdown*



Age Group	Sex				Total	
	Male	(%)	Female	(%)	Total	(%)
0 - 4	3,421	13.6%	3,328	13.3%	6,749	26.9%
5 - 11	3,830	15.3%	3,790	15.1%	7,620	30.4%
12 - 17	1,387	5.5%	1,267	5.0%	2,654	10.6%
18 - 59	2,730	10.9%	4,791	19.1%	7,521	30.0%
60 and above	281	1.1%	275	1.1%	556	2.2%
Total Hilaweyn	11,649	46.4%	13,451	53.6%	25,100	100.0%

Figure 2.5 - Hilaweyn Camp Demographic Breakdown*

