

# PMT Mogadishu Dashboard

Last Updated 18/11/2011 10:23

Total estimate Displacements from Mogadishu

**18,100**

Total Displacements Nationwide

**81,000**

Leaving the City To Areas Within Mogadishu

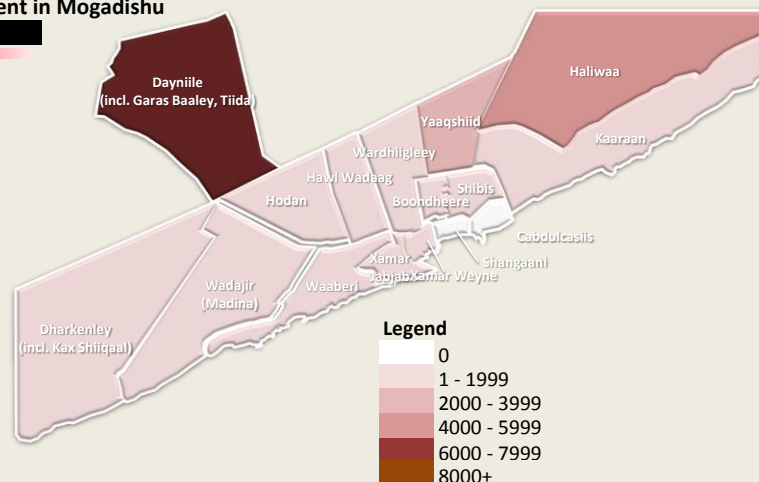
**3,800**

**14,300**

From 1 Sep 2011 to date

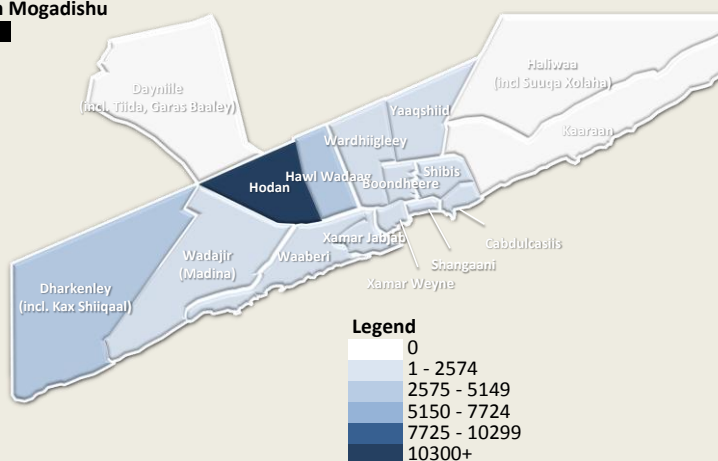
## Sources of Displacement in Mogadishu

District	Displacement
Dayniile	8,060
Haliwaa	5,390
Yaaqshiid	2,800
Wadajir	620
Banadir	320
Hawl Wadaag	200
Hodan	150
Kaaraan	140
Waaberi	130
Dharkenley	100
Wardhiigley	90
Boondheere	40
Xamar Jabjab	20
Xamar Weyne	10
Shibis	0
Cabdulcasiiis	0
Shangaani	0

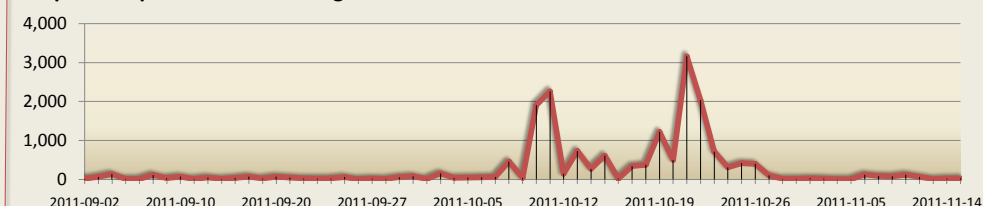


## Areas Receiving IDPs within Mogadishu

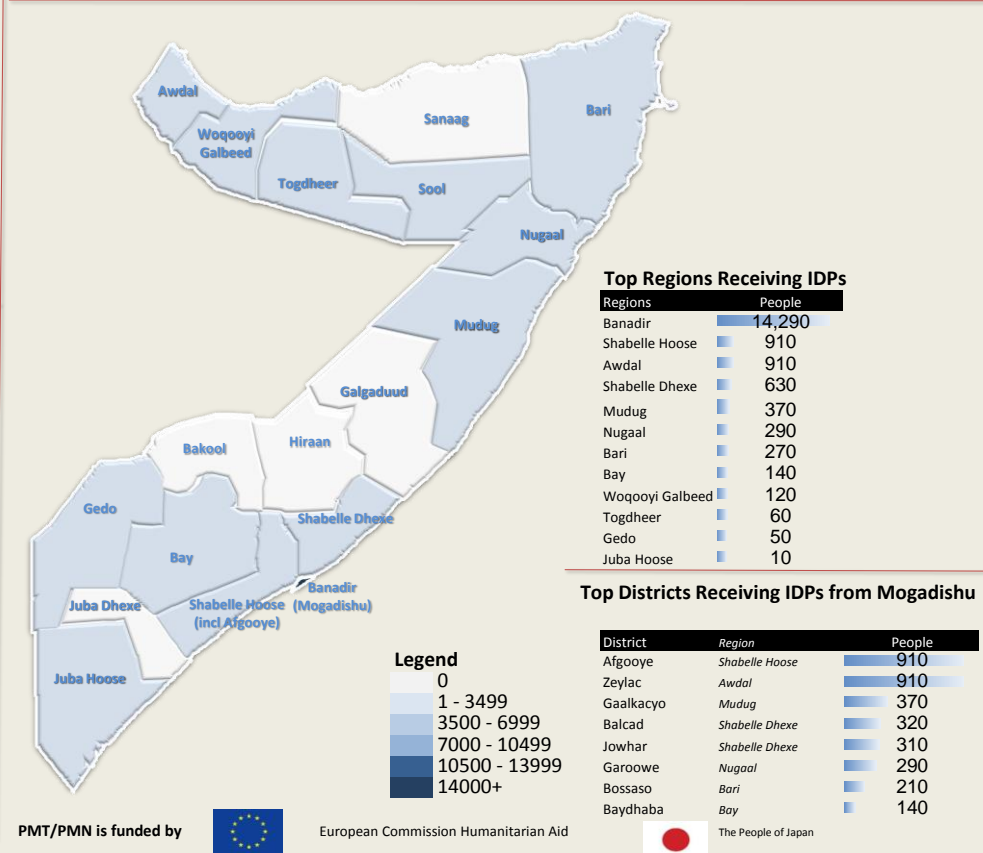
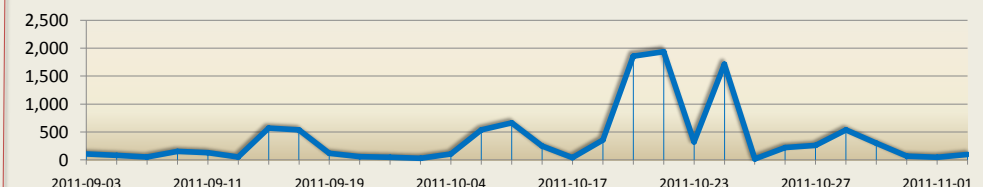
District	People
Hodan	10,390
Dharkenley	3,230
Hawl Wadaag	3,200
Waaberi	2,500
Boondheere	2,260
Shibis	1,080
Wardhiigley	600
Banadir	560
Xamar Weyne	420
Wadajir	420
Cabdulcasiiis	320
Yaaqshiid	320
Shangaani	240
Xamar Jabjab	70
Dayniile	0
Haliwaa	0
Kaaraan	0



## Graph of Displacement from Mogadishu



## Graph of Displacements to Mogadishu



## Top Regions Receiving IDPs

Regions	People
Banadir	14,290
Shabelle Hoose	910
Awdal	910
Shabelle Dhexe	630
Mudug	370
Nugaal	290
Bari	270
Bay	140
Woqooyi Galbeed	120
Togdheer	60
Gedo	50
Juba Hoose	10

## Top Districts Receiving IDPs from Mogadishu

District	Region	People
Afgooye	Shabelle Hoose	910
Zeylac	Awdal	910
Gaalkacyo	Mudug	370
Balcad	Shabelle Dhexe	320
Jowhar	Shabelle Dhexe	310
Garoowe	Nugaal	290
Bossaso	Bari	210
Baydhaba	Bay	140



For more information, contact:  
 Needham Andreas - (PI Officer/Executive Assistant)-needham@unhcr.org  
 Matthew Smawfield - Operations Data Manager - smawfield@unhcr.org

Data on displacement is obtained from the IASC Somalia Population Movement Tracking system

PMT/PMN is funded by



European Commission Humanitarian Aid



The People of Japan