

Dollo Ado Population Statistical Report

As of 13 Dec 2011

Figure 1.1 - Total Refugee Population in Dollo Ado

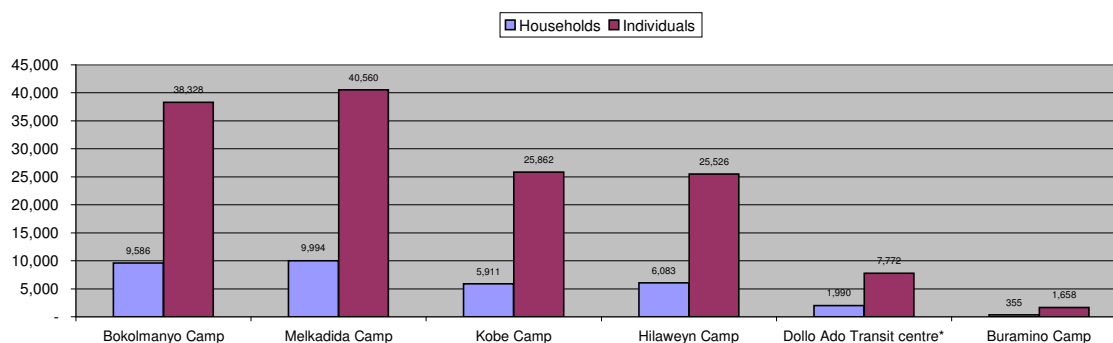


Table 1.1 - Total Refugee Population in Dollo Ado

Site/Camp	Current Total		As of 31 Dec 2010		Arrivals in 2011	
	Households	Individuals	Households	Individuals	Households	Individuals
Bokolmanyo Camp	9,586	38,328	3,988	14,988	5,598	23,340
Melkadida Camp	9,994	40,560	6,452	25,491	3,542	15,069
Kobe Camp	5,911	25,862	n/a	n/a	5,911	25,862
Hilaweyn Camp	6,083	25,526	n/a	n/a	6,083	25,526
Buramino Camp	355	1,658	n/a	n/a	355	1,658
Camp Sub-Total	31,929	131,934	10,440	40,479	21,134	89,797
Dollo Ado Transit centre*	1,990	7,772	n/a	n/a	1,990	7,772
Temporary Locations Sub-Total	1,990	7,772	n/a	n/a	1,990	7,772
GRAND TOTAL ALL LOCATIONS	33,919	139,706	10,440	40,479	23,124	97,569

* Individuals currently in the Transit Centre. All new arrivals are registered at the Transit Centre and are subsequently relocated to the camps.

Figure 1.2 - New Arrivals at Reception Centre During Current Month (Weekly)

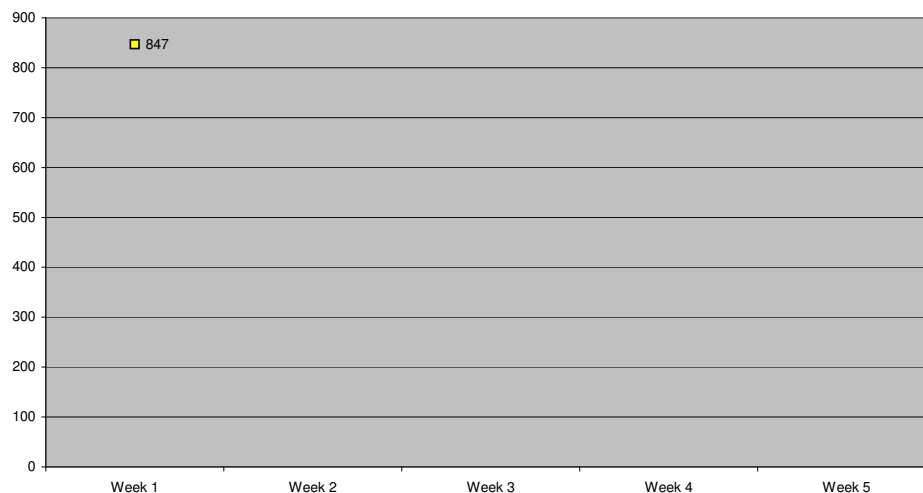


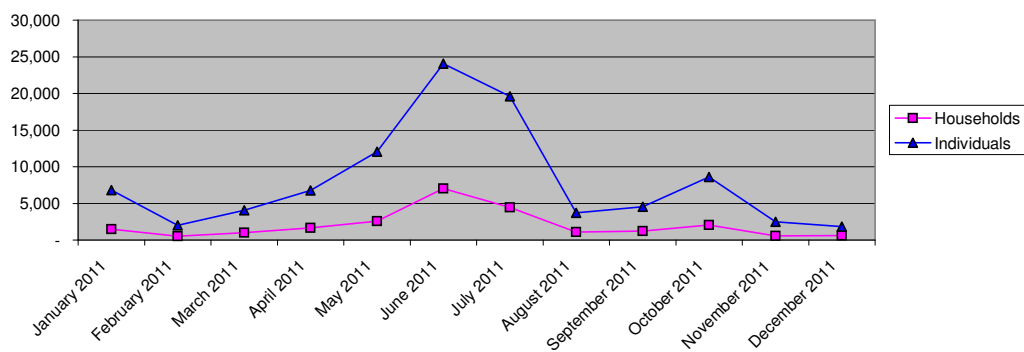
Table 1.2 - Daily New Arrivals and Pre-registration by ARRA at the Reception Centre

Date	Newly Arrived Individuals	Pre-registered by ARRA *
Thu 01 Dec 11	140	131
Fri 02 Dec 11	152	143
Sat 03 Dec 11		**
Sun 04 Dec 11		**
Mon 05 Dec 11	151	136
Tue 06 Dec 11	339	336
Wed 07 Dec 11	65	65
Thu 08 Dec 11	70	70
Fri 09 Dec 11	204	192
Sat 10 Dec 11		**
Sun 11 Dec 11		**
Mon 12 Dec 11	543	539
Tue 13 Dec 11	251	240
Wed 14 Dec 11		
Thu 15 Dec 11		
Fri 16 Dec 11		
Sat 17 Dec 11		
Sun 18 Dec 11		
Mon 19 Dec 11		
Tue 20 Dec 11		
Wed 21 Dec 11		
Thu 22 Dec 11		
Fri 23 Dec 11		
Sat 24 Dec 11		
Sun 25 Dec 11		
Mon 26 Dec 11		
Tue 27 Dec 11		
Wed 28 Dec 11		
Thu 29 Dec 11		
Fri 30 Dec 11		
Sat 31 Dec 11		
TOTAL THIS MONTH	1,915	1,852

* Pre-registration by ARRA is not necessarily done on the day of Arrival

** Represent days when ARRA was not receiving Asylum seekers.

The number of those received during these days is include in the figure of next receiving day.

Figure 1.3 - Pre-Registration Trends in 2011 (Reception Centre/ ARRA)


Note: these are registration volumes by month, not cumulative figures.

Table 1.3 - Pre-Registration Trends in 2011 (Reception Centre/ ARRA)

Month	Households	Individuals
January 2011	1,502	6,792
February 2011	527	2,016
March 2011	1,019	4,072
April 2011	1,650	6,749
May 2011	2,587	12,045
June 2011	7,030	24,042
July 2011	4,463	19,610
August 2011	1,072	3,691
September 2011	1,215	4,563
October 2011	2,036	8,584
November 2011	553	2,485
December 2011	599	1,852
Total	24,253	96,501

Table 1.4 - Registration & Relocation Trends in Transit Centre up to date

Stage of Registration & Relocation	Individuals
Total individuals fully registered so far this month	1,647
Total individuals relocated to camp so far this month	1,757
Total individuals fully processed (have ration card), but not yet relocated	7,558

Camp population by Age and Sex breakdown

As of 13 Dec 2011

Table 2.1 - ALL CAMPS Demographic Breakdown*

Age Group	Sex				Total	
	Male	(%)	Female	(%)	Total	(%)
0 - 4	16,794	12.7%	16,378	12.4%	33,172	25.1%
5 - 11	21,172	16.0%	20,244	15.3%	41,416	31.4%
12 - 17	7,828	5.9%	7,107	5.4%	14,935	11.3%
18 - 59	14,193	10.8%	25,165	19.1%	39,358	29.8%
60 and above	1,545	1.2%	1,508	1.1%	3,053	2.3%
Total ALL CAMPS	61,532	46.6%	70,402	53.4%	131,934	100.0%

* These total figures apply only to camps, not to the Transit Centre or Reception Centre

Figure 2.1 - ALL CAMPS Demographic Breakdown*

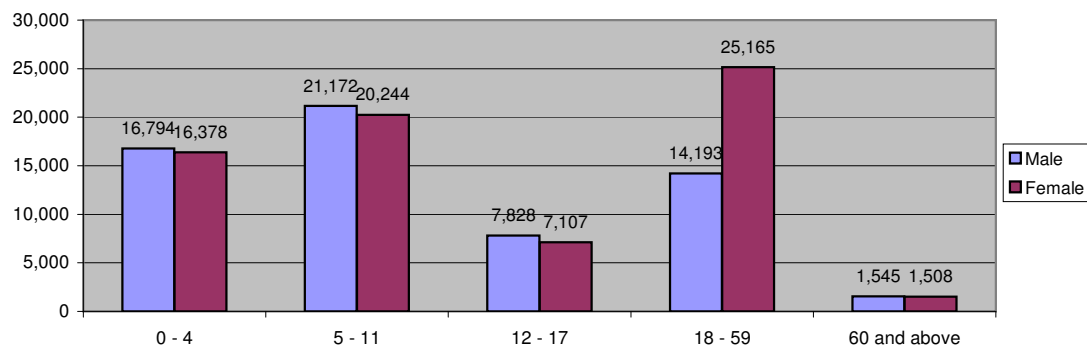


Table 2.2 - Melkadida Camp Demographic Breakdown

Age Group	Sex				Total	
	Male	(%)	Female	(%)	Total	(%)
0 - 4	5,033	12.4%	4,848	12.0%	9,881	24.4%
5 - 11	6,815	16.8%	6,535	16.1%	13,350	32.9%
12 - 17	2,391	5.9%	2,341	5.8%	4,732	11.7%
18 - 59	3,955	9.8%	7,767	19.1%	11,722	28.9%
60 and above	438	1.1%	437	1.1%	875	2.2%
Total Malkadida	18,632	45.9%	21,928	54.1%	40,560	100.0%

Figure 2.2 - Melkadida Camp Demographic Breakdown*

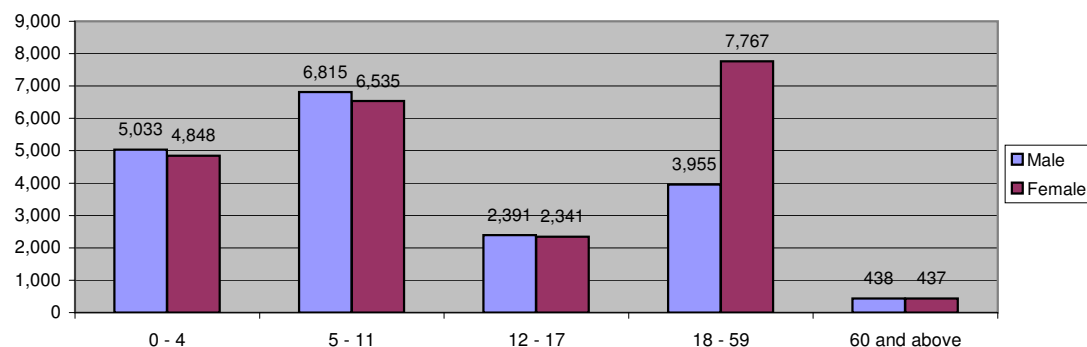


Table 2.3 - Bokolmanyo Camp Demographic Breakdown

Age Group	Sex				Total	
	Male	(%)	Female	(%)	Total	(%)
0 - 4	4,617	12.0%	4,639	12.1%	9,256	24.1%
5 - 11	6,170	16.1%	5,909	15.4%	12,079	31.5%
12 - 17	2,523	6.6%	2,155	5.6%	4,678	12.2%
18 - 59	4,138	10.8%	7,380	19.3%	11,518	30.1%
60 and above	410	1.1%	387	1.0%	797	2.1%
Total Bokolmanyo	17,858	46.6%	20,470	53.4%	38,328	100.0%

Figure 2.3 - Bokolmanyo Camp Demographic Breakdown*

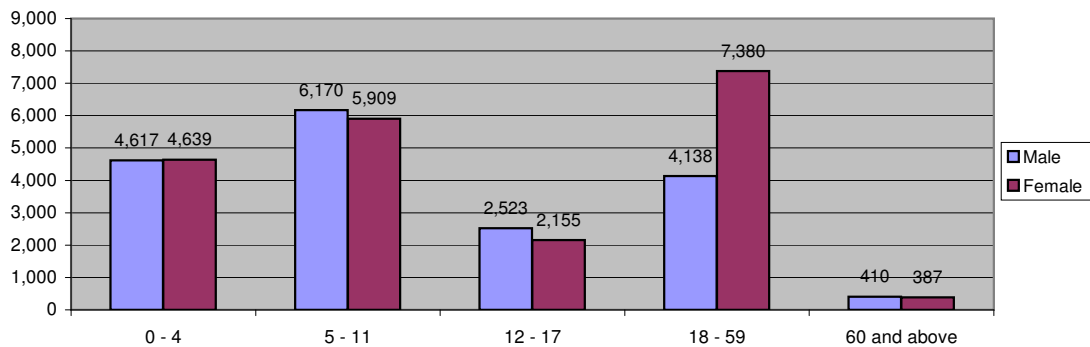


Table 2.4 - Kobe Camp Demographic Breakdown

Age Group	Sex				Total	
	Male	(%)	Female	(%)	Total	(%)
0 - 4	3,436	13.3%	3,285	12.7%	6,721	26.0%
5 - 11	4,054	15.7%	3,702	14.3%	7,756	30.0%
12 - 17	1,419	5.5%	1,196	4.6%	2,615	10.1%
18 - 59	3,144	12.2%	4,850	18.8%	7,994	30.9%
60 and above	395	1.5%	381	1.5%	776	3.0%
Total Kobe	12,448	48.1%	13,414	51.9%	25,862	100.0%

Figure 2.4 - Kobe Camp Demographic Breakdown*

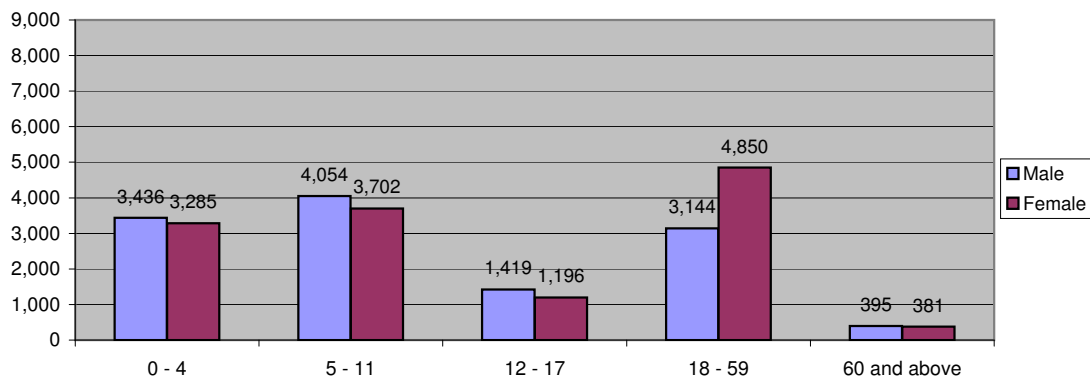


Table 2.5 - Hilaweyn Camp Demographic Breakdown

Age Group	Sex				Total	
	Male	(%)	Female	(%)	Total	(%)
0 - 4	3,472	13.6%	3,379	13.2%	6,851	26.8%
5 - 11	3,881	15.2%	3,838	15.0%	7,719	30.2%
12 - 17	1,416	5.5%	1,310	5.1%	2,726	10.7%
18 - 59	2,799	11.0%	4,861	19.0%	7,660	30.0%
60 and above	287	1.1%	283	1.1%	570	2.2%
Total Hilaweyn	11,855	46.4%	13,671	53.6%	25,526	100.0%

Figure 2.5 - Hilaweyn Camp Demographic Breakdown*

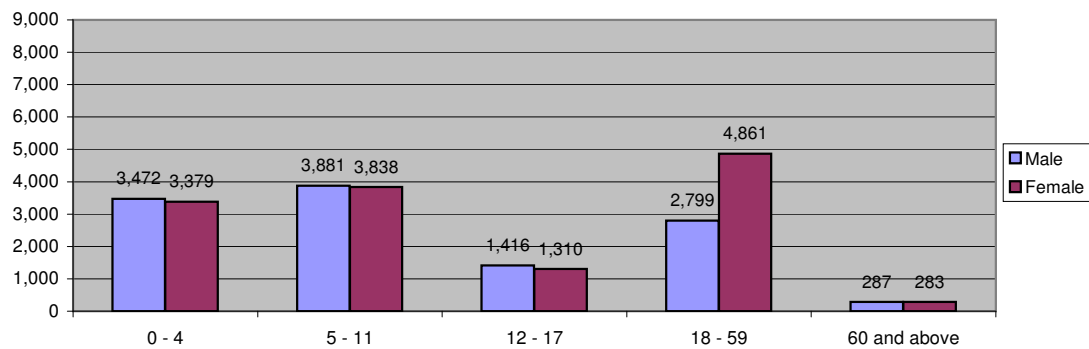


Table 2.6 - Buramino Camp Demographic Breakdown

Age Group	Sex				Total	
	Male	(%)	Female	(%)	Total	(%)
0 - 4	236	14.2%	227	13.7%	463	27.9%
5 - 11	252	15.2%	260	15.7%	512	30.9%
12 - 17	79	4.8%	105	6.3%	184	11.1%
18 - 59	157	9.5%	307	18.5%	464	28.0%
60 and above	15	0.9%	20	1.2%	35	2.1%
Total Buramino	739	44.6%	919	55.4%	1,658	100.0%

Figure 2.6 - Buramino Camp Demographic Breakdown*

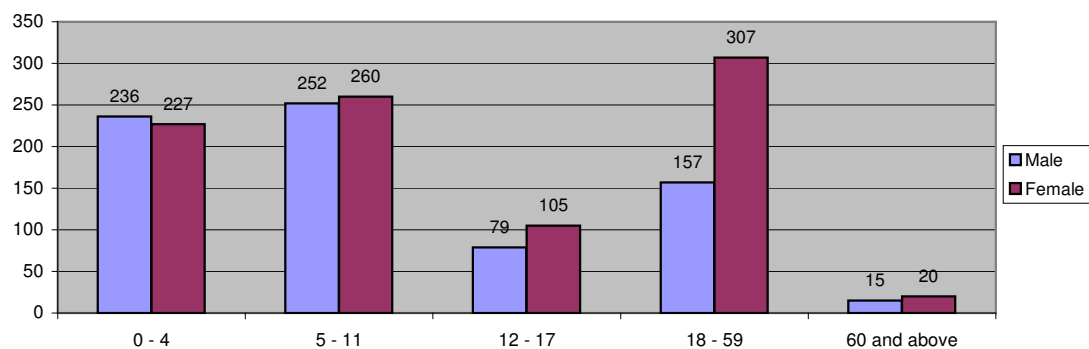


Table 2.7 - Dollo Ado Transit centre Demographic Breakdown

Age Group	Sex				Total	
	Male	(%)	Female	(%)	Total	(%)
0 - 4	1,113	14.3%	1,046	13.5%	2,159	27.8%
5 - 11	1,143	14.7%	1,115	14.4%	2,258	29.1%
12 - 17	385	5.0%	408	5.3%	793	10.2%
18 - 59	902	11.6%	1,467	18.9%	2,369	30.5%
60 and above	86	1.1%	102	1.3%	188	2.4%
Total TransitCentre	3,629	46.7%	4,138	53.3%	7,767	100.0%

Figure 2.7 - Dollo Ado Transit centre Demographic Breakdown

