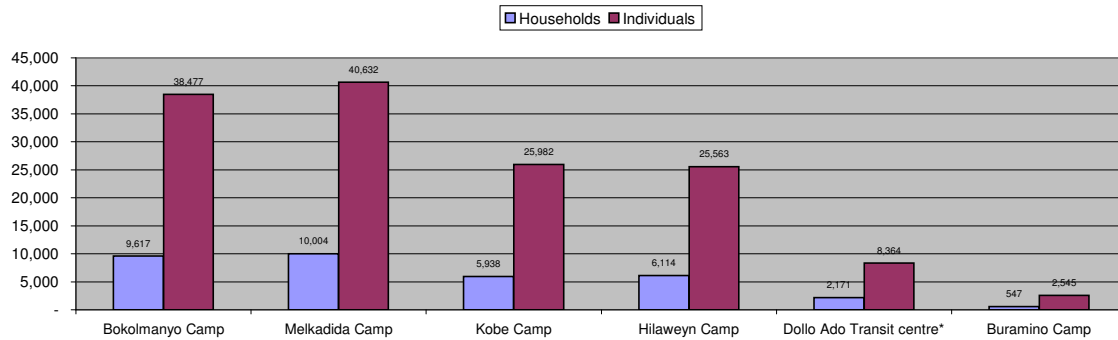


## Dollo Ado Population Statistical Report

*As of 24 Dec 2011*

**Figure 1.1 - Total Refugee Population in Dollo Ado**

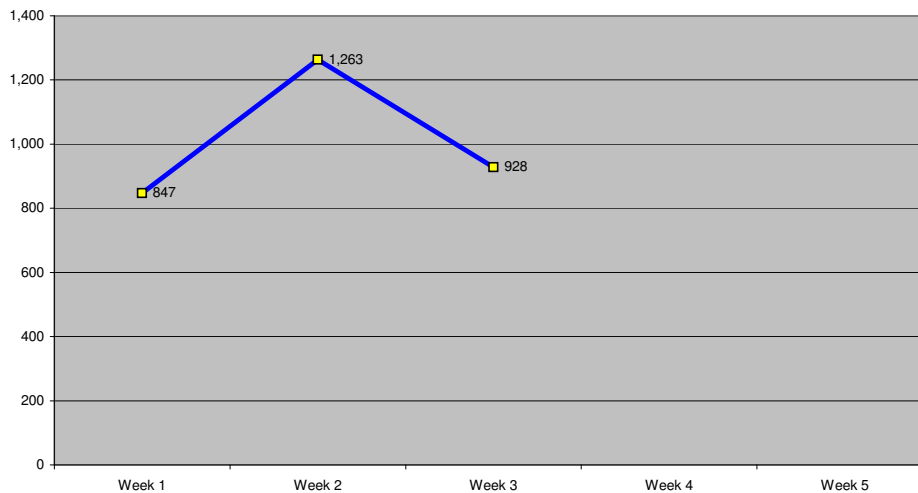


**Table 1.1 - Total Refugee Population in Dollo Ado**

Site/Camp	Current Total		As of 31 Dec 2010		Arrivals in 2011	
	Households	Individuals	Households	Individuals	Households	Individuals
Bokolmanyo Camp	9,617	38,477	3,988	14,988	5,629	23,489
Melkadida Camp	10,004	40,632	6,452	25,491	3,552	15,141
Kobe Camp	5,938	25,982	n/a	n/a	5,938	25,982
Hilaweyn Camp	6,114	25,563	n/a	n/a	6,114	25,563
Buramino Camp	547	2,545	n/a	n/a	547	2,545
<b>Camp Sub-Total</b>	<b>32,220</b>	<b>133,199</b>	<b>10,440</b>	<b>40,479</b>	<b>21,233</b>	<b>90,175</b>
Dollo Ado Transit centre*	2,171	8,364	n/a	n/a	2,171	8,364
<b>Temporary Locations Sub-Total</b>	<b>2,171</b>	<b>8,364</b>	<b>n/a</b>	<b>n/a</b>	<b>2,171</b>	<b>8,364</b>
<b>GRAND TOTAL ALL LOCATIONS</b>	<b>34,391</b>	<b>141,563</b>	<b>10,440</b>	<b>40,479</b>	<b>23,404</b>	<b>98,539</b>

\* Individuals currently in the Transit Centre. All new arrivals are registered at the Transit Centre and are subsequently relocated to the camps.

**Figure 1.2 - New Arrivals at Reception Centre During Current Month (Weekly)**



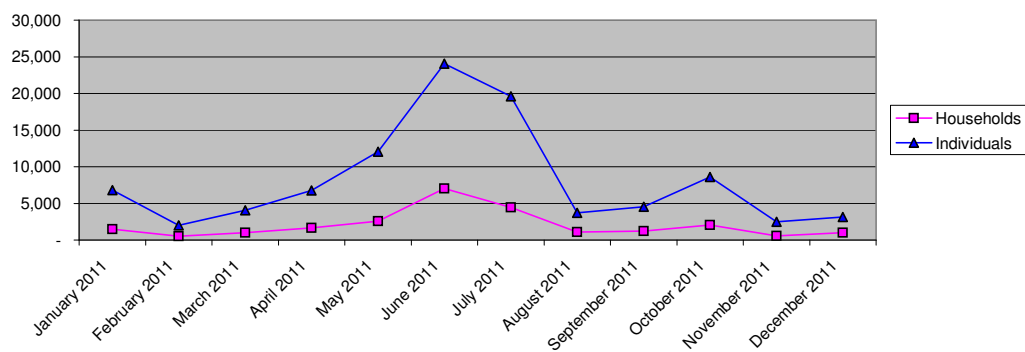
**Table 1.2 - Daily New Arrivals and Pre-registration by ARRA at the Reception Centre**

Date	Newly Arrived Individuals	Pre-registered by ARRA *
Thu 01 Dec 11	140	131
Fri 02 Dec 11	152	143
Sat 03 Dec 11		**
Sun 04 Dec 11		**
Mon 05 Dec 11	151	136
Tue 06 Dec 11	339	336
Wed 07 Dec 11	65	65
Thu 08 Dec 11	70	70
Fri 09 Dec 11	204	192
Sat 10 Dec 11		**
Sun 11 Dec 11		**
Mon 12 Dec 11	543	539
Tue 13 Dec 11	251	240
Wed 14 Dec 11	195	189
Thu 15 Dec 11	62	58
Fri 16 Dec 11	106	99
Sat 17 Dec 11	90	90
Sun 18 Dec 11	0	**
Mon 19 Dec 11	298	291
Tue 20 Dec 11	180	167
Wed 21 Dec 11	192	182
Thu 22 Dec 11	171	160
Fri 23 Dec 11	76	76
Sat 24 Dec 11		
Sun 25 Dec 11		
Mon 26 Dec 11		
Tue 27 Dec 11		
Wed 28 Dec 11		
Thu 29 Dec 11		
Fri 30 Dec 11		
Sat 31 Dec 11		
<b>TOTAL THIS MONTH</b>	<b>3,285</b>	<b>3,164</b>

\* Pre-registration by ARRA is not necessarily done on the day of Arrival

\*\* Represent days when ARRA was not receiving Asylum seekers.

The number of those received during these days is include in the figure of next receiving day.

**Figure 1.3 - Pre-Registration Trends in 2011 (Reception Centre/ ARRA)**


Note: these are registration volumes by month, not cumulative figures.

**Table 1.3 - Pre-Registration Trends in 2011 (Reception Centre/ ARRA)**

Month	Households	Individuals
January 2011	1,502	6,792
February 2011	527	2,016
March 2011	1,019	4,072
April 2011	1,650	6,749
May 2011	2,587	12,045
June 2011	7,030	24,042
July 2011	4,463	19,610
August 2011	1,072	3,691
September 2011	1,215	4,563
October 2011	2,036	8,584
November 2011	553	2,485
December 2011	1,000	3,164
<b>Total</b>	<b>24,654</b>	<b>97,813</b>

**Table 1.4 - Registration & Relocation Trends in Transit Centre up to date**

Stage of Registration & Relocation	Individuals
Total individuals fully registered so far this month	3,309
Total individuals relocated to camps so far this month	2,745
Total individuals fully processed (have ration card), but not yet relocated	8,151

## Camp population by Age and Sex breakdown

As of 24 Dec 2011

Table 2.1 - ALL CAMPS Demographic Breakdown\*

Age Group	Sex				Total	
	Male	(%)	Female	(%)	Total	(%)
0 - 4	17,027	12.8%	16,632	12.5%	33,659	25.3%
5 - 11	21,334	16.0%	20,377	15.3%	41,711	31.3%
12 - 17	7,882	5.9%	7,169	5.4%	15,051	11.3%
18 - 59	14,344	10.8%	25,353	19.0%	39,697	29.8%
60 and above	1,561	1.2%	1,519	1.1%	3,080	2.3%
<b>Total ALL CAMPS</b>	<b>62,148</b>	<b>46.7%</b>	<b>71,050</b>	<b>53.3%</b>	<b>133,198</b>	<b>100.0%</b>

\* These total figures apply only to camps, not to the Transit Centre or Reception Centre

Figure 2.1 - ALL CAMPS Demographic Breakdown\*

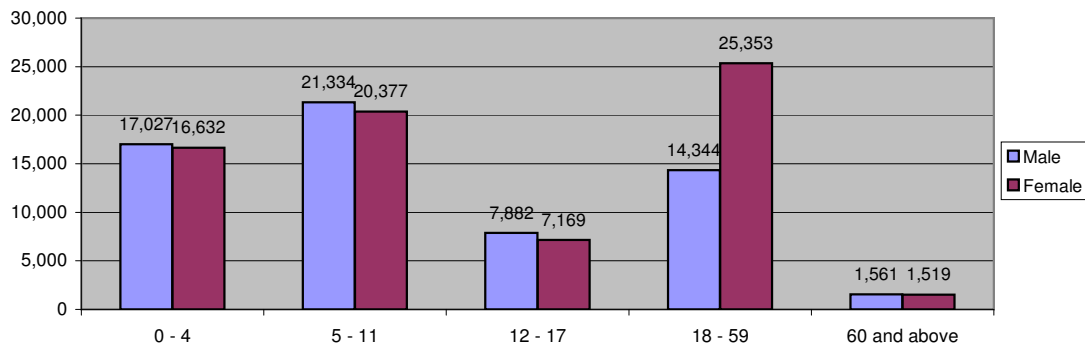
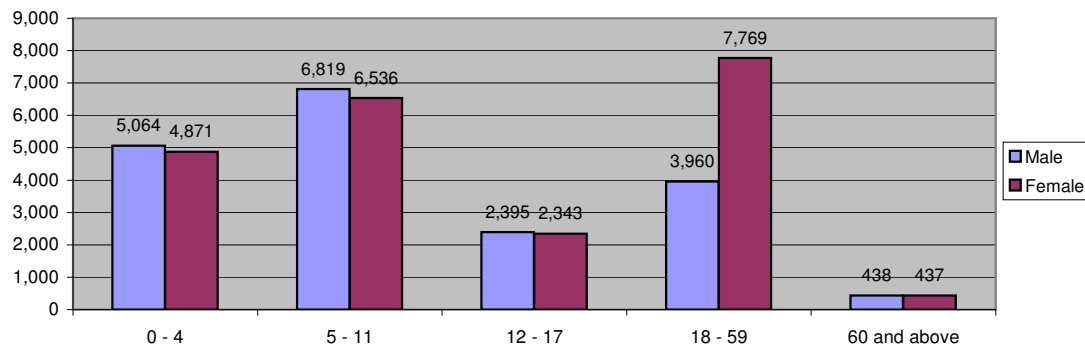


Table 2.2 - Melkadida Camp Demographic Breakdown

Age Group	Sex				Total	
	Male	(%)	Female	(%)	Total	(%)
0 - 4	5,064	12.5%	4,871	12.0%	9,935	24.5%
5 - 11	6,819	16.8%	6,536	16.1%	13,355	32.9%
12 - 17	2,395	5.9%	2,343	5.8%	4,738	11.7%
18 - 59	3,960	9.7%	7,769	19.1%	11,729	28.9%
60 and above	438	1.1%	437	1.1%	875	2.2%
<b>Total Malkadida</b>	<b>18,676</b>	<b>46.0%</b>	<b>21,956</b>	<b>54.0%</b>	<b>40,632</b>	<b>100.0%</b>

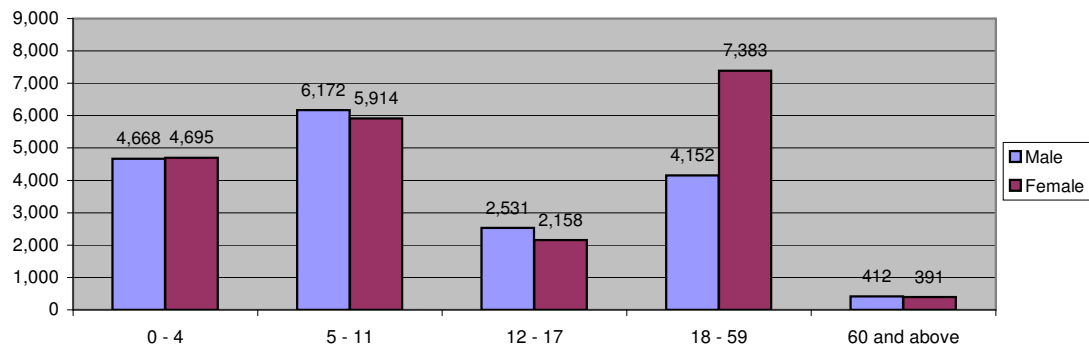
Figure 2.2 - Melkadida Camp Demographic Breakdown\*



**Table 2.3 - Bokolmanyo Camp Demographic Breakdown**

Age Group	Sex				Total	
	Male	(%)	Female	(%)	Total	(%)
0 - 4	4,668	12.1%	4,695	12.2%	9,363	24.3%
5 - 11	6,172	16.0%	5,914	15.4%	12,086	31.4%
12 - 17	2,531	6.6%	2,158	5.6%	4,689	12.2%
18 - 59	4,152	10.8%	7,383	19.2%	11,535	30.0%
60 and above	412	1.1%	391	1.0%	803	2.1%
<b>Total Bokolmanyo</b>	<b>17,935</b>	<b>46.6%</b>	<b>20,541</b>	<b>53.4%</b>	<b>38,476</b>	<b>100.0%</b>

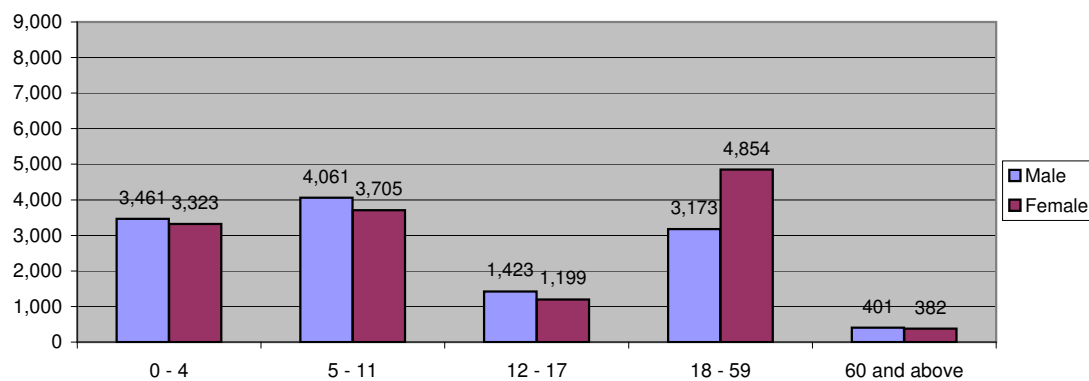
**Figure 2.3 - Bokolmanyo Camp Demographic Breakdown\***



**Table 2.4 - Kobe Camp Demographic Breakdown**

Age Group	Sex				Total	
	Male	(%)	Female	(%)	Total	(%)
0 - 4	3,461	13.3%	3,323	12.8%	6,784	26.1%
5 - 11	4,061	15.6%	3,705	14.3%	7,766	29.9%
12 - 17	1,423	5.5%	1,199	4.6%	2,622	10.1%
18 - 59	3,173	12.2%	4,854	18.7%	8,027	30.9%
60 and above	401	1.5%	382	1.5%	783	3.0%
<b>Total Kobe</b>	<b>12,519</b>	<b>48.2%</b>	<b>13,463</b>	<b>51.8%</b>	<b>25,982</b>	<b>100.0%</b>

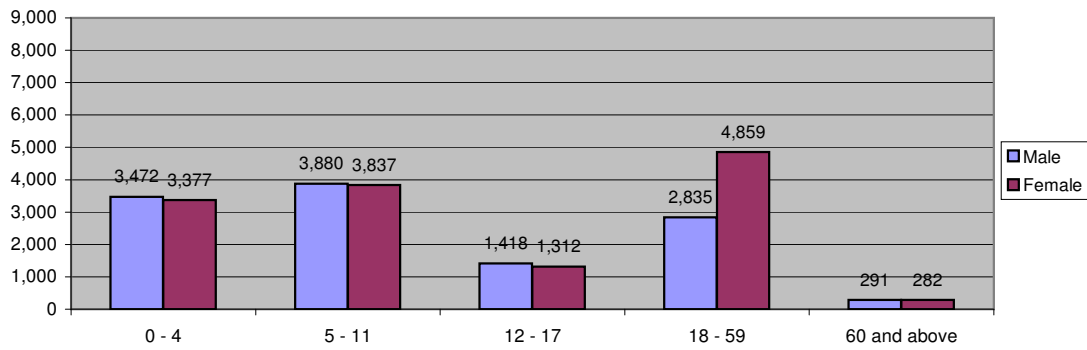
**Figure 2.4 - Kobe Camp Demographic Breakdown\***



**Table 2.5 - Hilaweyn Camp Demographic Breakdown**

Age Group	Sex				Total	
	Male	(%)	Female	(%)	Total	(%)
0 - 4	3,472	13.6%	3,377	13.2%	6,849	26.8%
5 - 11	3,880	15.2%	3,837	15.0%	7,717	30.2%
12 - 17	1,418	5.5%	1,312	5.1%	2,730	10.7%
18 - 59	2,835	11.1%	4,859	19.0%	7,694	30.1%
60 and above	291	1.1%	282	1.1%	573	2.2%
<b>Total Hilaweyn</b>	<b>11,896</b>	<b>46.5%</b>	<b>13,667</b>	<b>53.5%</b>	<b>25,563</b>	<b>100.0%</b>

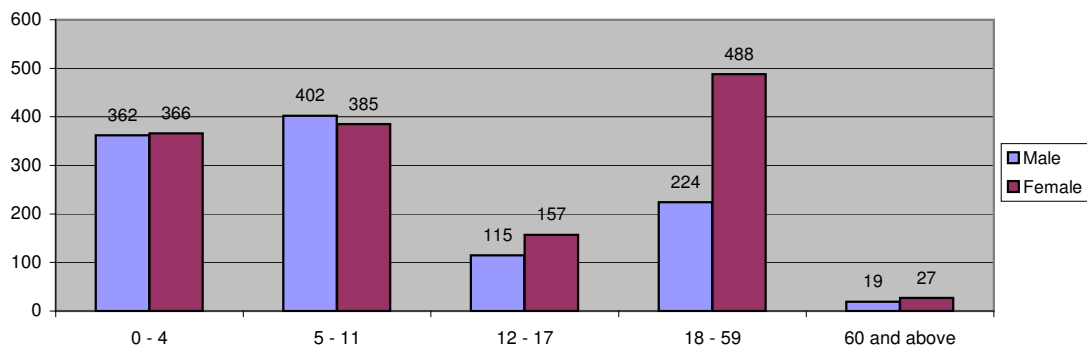
**Figure 2.5 - Hilaweyn Camp Demographic Breakdown\***



**Table 2.6 - Buramino Camp Demographic Breakdown**

Age Group	Sex				Total	
	Male	(%)	Female	(%)	Total	(%)
0 - 4	362	14.2%	366	14.4%	728	28.6%
5 - 11	402	15.8%	385	15.1%	787	30.9%
12 - 17	115	4.5%	157	6.2%	272	10.7%
18 - 59	224	8.8%	488	19.2%	712	28.0%
60 and above	19	0.7%	27	1.1%	46	1.8%
<b>Total Buramino</b>	<b>1,122</b>	<b>44.1%</b>	<b>1,423</b>	<b>55.9%</b>	<b>2,545</b>	<b>100.0%</b>

**Figure 2.6 - Buramino Camp Demographic Breakdown\***



**Table 2.7 - Dollo Ado Transit centre Demographic Breakdown**

Age Group	Sex				Total	
	Male	(%)	Female	(%)	Total	(%)
0 - 4	1,189	14.2%	1,122	13.4%	2,311	27.6%
5 - 11	1,201	14.4%	1,209	14.5%	2,410	28.8%
12 - 17	423	5.1%	446	5.3%	869	10.4%
18 - 59	1,013	12.1%	1,552	18.6%	2,565	30.7%
60 and above	96	1.1%	113	1.4%	209	2.5%
<b>Total TransitCentre</b>	<b>3,922</b>	<b>46.9%</b>	<b>4,442</b>	<b>53.1%</b>	<b>8,364</b>	<b>100.0%</b>

**Figure 2.7 - Dollo Ado Transit centre Demographic Breakdown**

