

Dollo Ado Population Statistical Report

As of 04 Jan 2012

Figure 1.1 - Total Refugee Population in Dollo Ado

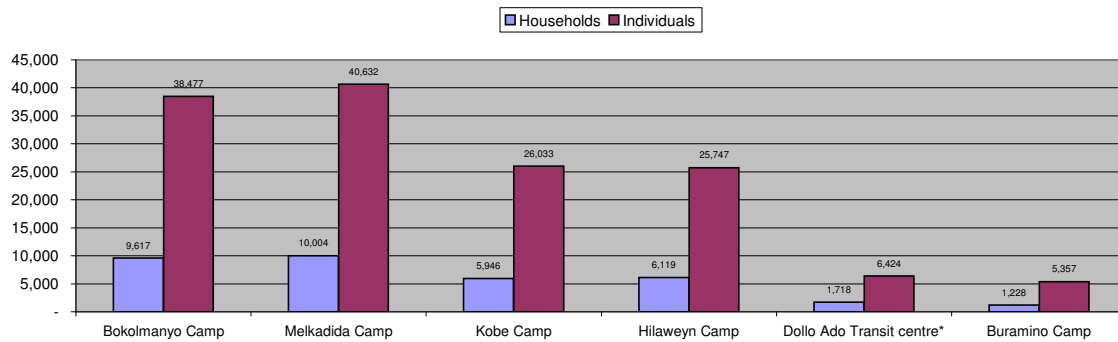


Table 1.1 - Total Refugee Population in Dollo Ado

Site/Camp	Current Total		As of 31 Dec 2010		Arrivals in 2011	
	Households	Individuals	Households	Individuals	Households	Individuals
Bokolmany Camp	9,617	38,477	3,988	14,988	5,629	23,489
Melkadida Camp	10,004	40,632	6,452	25,491	3,552	15,141
Kobe Camp	5,946	26,033	n/a	n/a	5,946	26,033
Hilaweyn Camp	6,119	25,747	n/a	n/a	6,119	25,747
Buramino Camp	1,228	5,357	n/a	n/a	1,228	5,357
Camp Sub-Total	32,914	136,246	10,440	40,479	21,246	90,410
Dollo Ado Transit centre*	1,718	6,424	n/a	n/a	1,718	6,424
Temporary Locations Sub-Total	1,718	6,424	n/a	n/a	1,718	6,424
GRAND TOTAL ALL LOCATIONS	34,632	142,670	10,440	40,479	22,964	96,834

* Individuals currently in the Transit Centre. All new arrivals are registered at the Transit Centre and are subsequently relocated to the camps.

Figure 1.2 - New Arrivals at Reception Centre During Current Month (Weekly)

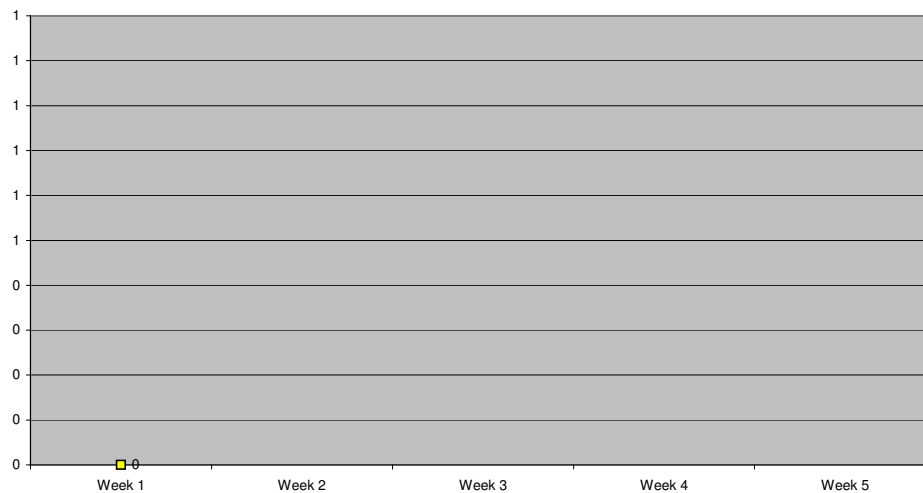


Table 1.2 - Daily New Arrivals and Pre-registration by ARRA at the Reception Centre

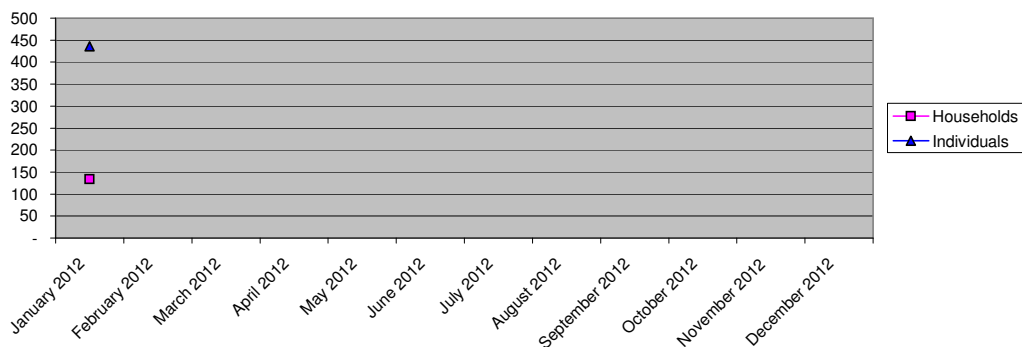
Date	Newly Arrived Individuals	Pre-registered by ARRA *
Sun 01 Jan 12		**
Mon 02 Jan 12	223	209
Tue 03 Jan 12	145	135
Wed 04 Jan 12	92	92
Thu 05 Jan 12		
Fri 06 Jan 12		
Sat 07 Jan 12		
Sun 08 Jan 12		
Mon 09 Jan 12		
Tue 10 Jan 12		
Wed 11 Jan 12		
Thu 12 Jan 12		
Fri 13 Jan 12		
Sat 14 Jan 12		
Sun 15 Jan 12		
Mon 16 Jan 12		
Tue 17 Jan 12		
Wed 18 Jan 12		
Thu 19 Jan 12		
Fri 20 Jan 12		
Sat 21 Jan 12		
Sun 22 Jan 12		
Mon 23 Jan 12		
Tue 24 Jan 12		
Wed 25 Jan 12		
Thu 26 Jan 12		
Fri 27 Jan 12		
Sat 28 Jan 12		
Sun 29 Jan 12		
Mon 30 Jan 12		
Tue 31 Jan 12		
TOTAL THIS MONTH	460	436

* Pre-registration by ARRA is not necessarily done on the day of Arrival

** Represent days when ARRA was not receiving Asylum seekers.

The number of those received during these days is include in the figure of next receiving day.

Figure 1.3 - Pre-Registration Trends in 2011 (Reception Centre/ ARRA)



Note: these are registration volumes by month, not cumulative figures.

Table 1.3 - Pre-Registration Trends in 2011 (Reception Centre/ ARRA)

Month	Households	Individuals
January 2012	134	436
February 2012		
March 2012		
April 2012		
May 2012		
June 2012		
July 2012		
August 2012		
September 2012		
October 2012		
November 2012		
December 2012		
Total	134	436

Table 1.4 - Registration & Relocation Trends in Transit Centre up to date

Stage of Registration & Relocation	Individuals
Total individuals fully registered so far this month	461
Total individuals relocated to camps so far this month	1,302
Total individuals fully processed (have ration card), but not yet relocated	6,280

Camp population by Age and Sex breakdown

As of 04 Jan 2012

Table 2.1 - ALL CAMPS Demographic Breakdown*

Age Group	Sex				Total	
	Male	(%)	Female	(%)	Total	(%)
0 - 4	17,508	12.9%	17,073	12.5%	34,581	25.4%
5 - 11	21,779	16.0%	20,805	15.3%	42,584	31.3%
12 - 17	8,019	5.9%	7,317	5.4%	15,336	11.3%
18 - 59	14,689	10.8%	25,904	19.0%	40,593	29.8%
60 and above	1,589	1.2%	1,562	1.1%	3,151	2.3%
Total ALL CAMPS	63,584	46.7%	72,661	53.3%	136,245	100.0%

* These total figures apply only to camps, not to the Transit Centre or Reception Centre

Figure 2.1 - ALL CAMPS Demographic Breakdown*

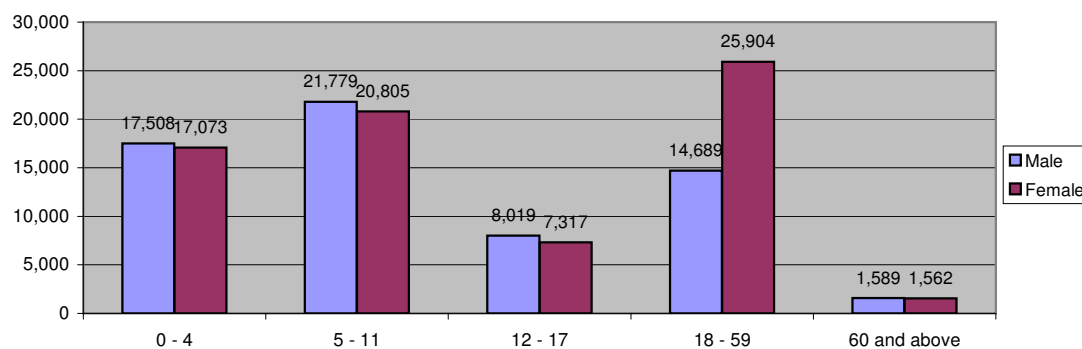


Table 2.2 - Melkadida Camp Demographic Breakdown

Age Group	Sex				Total	
	Male	(%)	Female	(%)	Total	(%)
0 - 4	5,064	12.5%	4,871	12.0%	9,935	24.5%
5 - 11	6,819	16.8%	6,536	16.1%	13,355	32.9%
12 - 17	2,395	5.9%	2,343	5.8%	4,738	11.7%
18 - 59	3,960	9.7%	7,769	19.1%	11,729	28.9%
60 and above	438	1.1%	437	1.1%	875	2.2%
Total Malkadida	18,676	46.0%	21,956	54.0%	40,632	100.0%

Figure 2.2 - Melkadida Camp Demographic Breakdown*

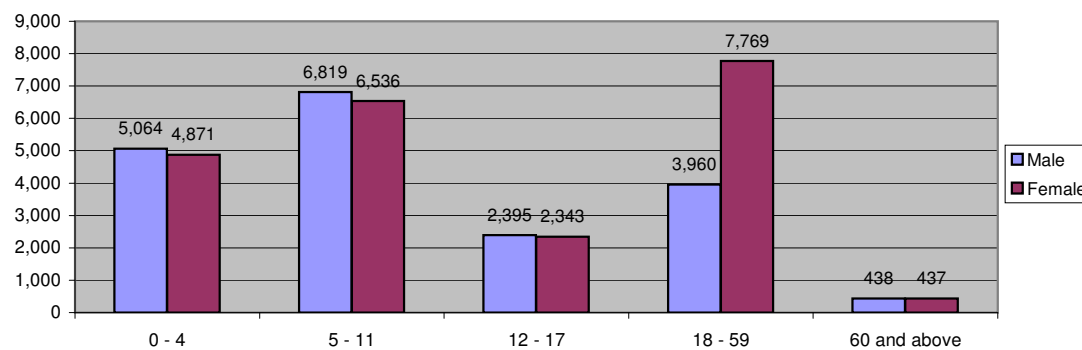


Table 2.3 - Bokolmany Camp Demographic Breakdown

Age Group	Sex				Total	
	Male	(%)	Female	(%)	Total	(%)
0 - 4	4,668	12.1%	4,695	12.2%	9,363	24.3%
5 - 11	6,172	16.0%	5,914	15.4%	12,086	31.4%
12 - 17	2,531	6.6%	2,158	5.6%	4,689	12.2%
18 - 59	4,152	10.8%	7,383	19.2%	11,535	30.0%
60 and above	412	1.1%	391	1.0%	803	2.1%
Total Bokolmany	17,935	46.6%	20,541	53.4%	38,476	100.0%

Figure 2.3 - Bokolmany Camp Demographic Breakdown*

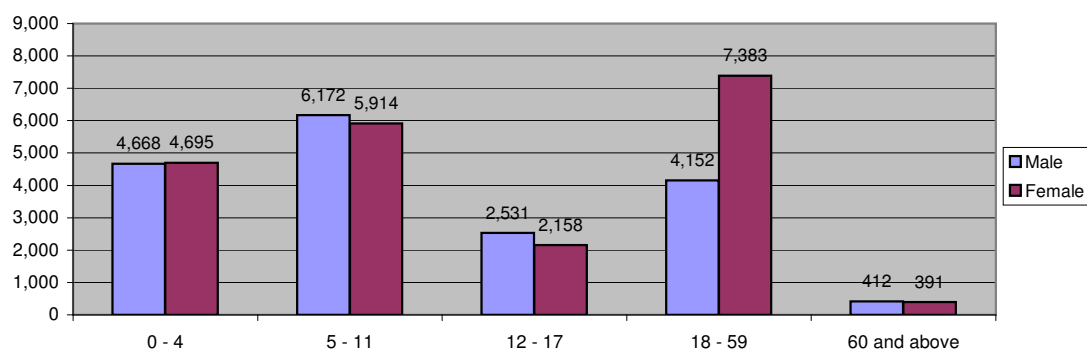


Table 2.4 - Kobe Camp Demographic Breakdown

Age Group	Sex				Total	
	Male	(%)	Female	(%)	Total	(%)
0 - 4	3,457	13.3%	3,307	12.7%	6,764	26.0%
5 - 11	4,079	15.7%	3,720	14.3%	7,799	30.0%
12 - 17	1,429	5.5%	1,208	4.6%	2,637	10.1%
18 - 59	3,192	12.3%	4,853	18.6%	8,045	30.9%
60 and above	405	1.6%	383	1.5%	788	3.0%
Total Kobe	12,562	48.3%	13,471	51.7%	26,033	100.0%

Figure 2.4 - Kobe Camp Demographic Breakdown*

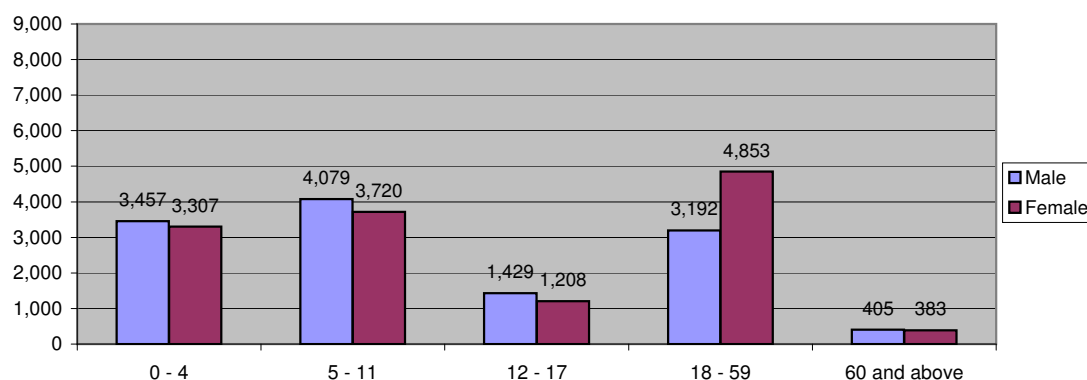


Table 2.5 - Hilaweyn Camp Demographic Breakdown

Age Group	Sex				Total	
	Male	(%)	Female	(%)	Total	(%)
0 - 4	3,550	13.8%	3,460	13.4%	7,010	27.2%
5 - 11	3,884	15.1%	3,841	14.9%	7,725	30.0%
12 - 17	1,419	5.5%	1,311	5.1%	2,730	10.6%
18 - 59	2,847	11.1%	4,862	18.9%	7,709	29.9%
60 and above	293	1.1%	280	1.1%	573	2.2%
Total Hilaweyn	11,993	46.6%	13,754	53.4%	25,747	100.0%

Figure 2.5 - Hilaweyn Camp Demographic Breakdown*

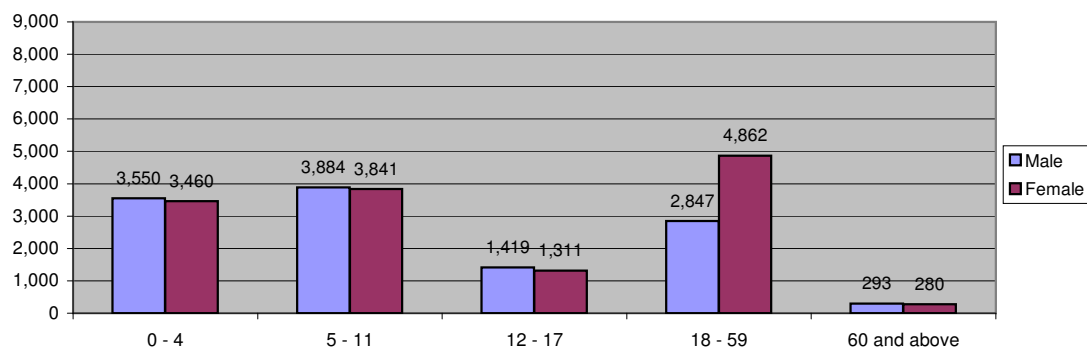


Table 2.6 - Buramino Camp Demographic Breakdown

Age Group	Sex				Total	
	Male	(%)	Female	(%)	Total	(%)
0 - 4	769	14.4%	740	13.8%	1,509	28.2%
5 - 11	825	15.4%	794	14.8%	1,619	30.2%
12 - 17	245	4.6%	297	5.5%	542	10.1%
18 - 59	538	10.0%	1,037	19.4%	1,575	29.4%
60 and above	41	0.8%	71	1.3%	112	2.1%
Total Buramino	2,418	45.1%	2,939	54.9%	5,357	100.0%

Figure 2.6 - Buramino Camp Demographic Breakdown*

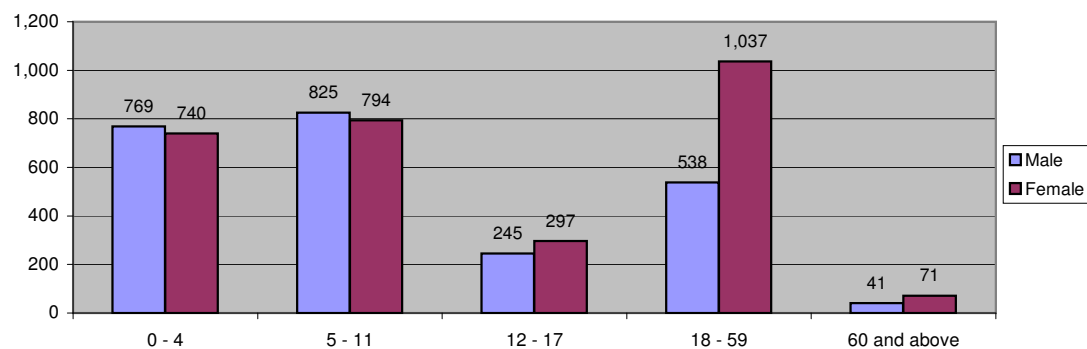


Table 2.7 - Dollo Ado Transit centre Demographic Breakdown

Age Group	Sex				Total	
	Male	(%)	Female	(%)	Total	(%)
0 - 4	899	14.0%	848	13.2%	1,747	27.2%
5 - 11	908	14.1%	925	14.4%	1,833	28.5%
12 - 17	356	5.5%	350	5.4%	706	11.0%
18 - 59	822	12.8%	1,153	17.9%	1,975	30.7%
60 and above	80	1.2%	83	1.3%	163	2.5%
Total TransitCentre	3,065	47.7%	3,359	52.3%	6,424	100.0%

Figure 2.7 - Dollo Ado Transit centre Demographic Breakdown

