

Dollo Ado Population Statistical Report

As of 01 Mar 2012

Figure 1.1 - Total Refugee Population in Dollo Ado

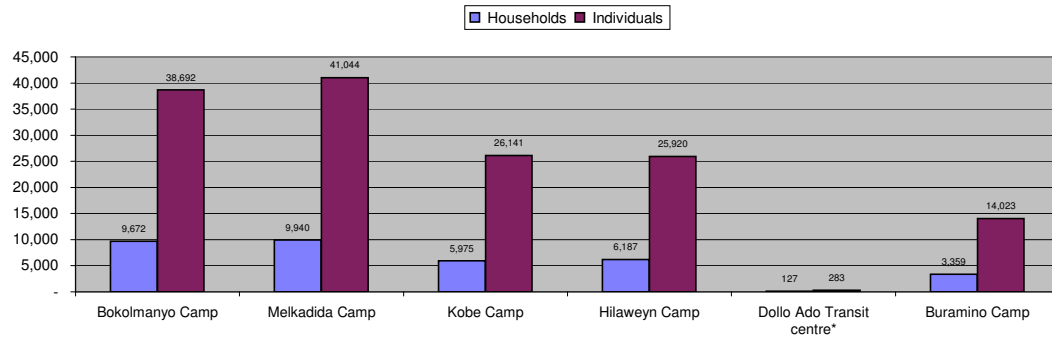


Table 1.1 - Total Refugee Population in Dollo Ado

Site/Camp	As of 31 Dec 2010		As of 31 Dec 2011		Current Total	
	Households	Individuals	Households	Individuals	Households	Individuals
Bokolmanyo Camp	3,988	14,988	9,624	38,501	9,672	38,692
Melkadida Camp	6,452	25,491	10,024	40,696	9,940	41,044
Kobe Camp	n/a	n/a	5,946	26,033	5,975	26,141
Hilaweyn Camp	n/a	n/a	6,119	25,747	6,187	25,920
Buramino Camp	n/a	n/a	911	4,045	3,359	14,023
Camp Sub-Total	10,440	40,479	32,624	135,022	35,133	145,820
Dollo Ado Transit centre*	n/a	n/a	1,902	7,284	127	283
Temporary Locations Sub-Total	n/a	n/a	n/a	n/a	127	283
GRAND TOTAL ALL LOCATIONS	10,440	40,479	34,526	142,306	35,260	146,103

* Individuals currently in the Transit Centre. All new arrivals are registered at the Transit Centre and are subsequently relocated to the camps.

Figure 1.2 - New Arrivals at Reception Centre During Current Month (Weekly)

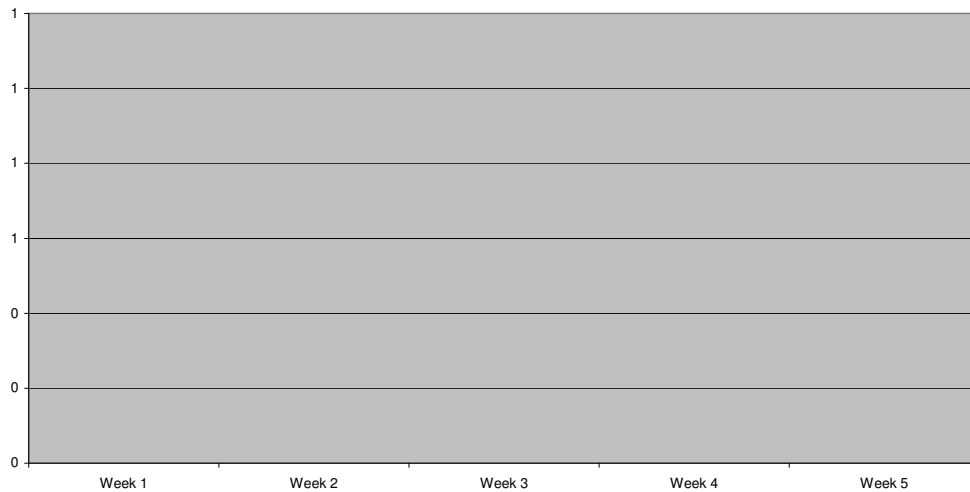


Table 1.2 - Daily New Arrivals and Pre-registration by ARRA at the Reception Centre

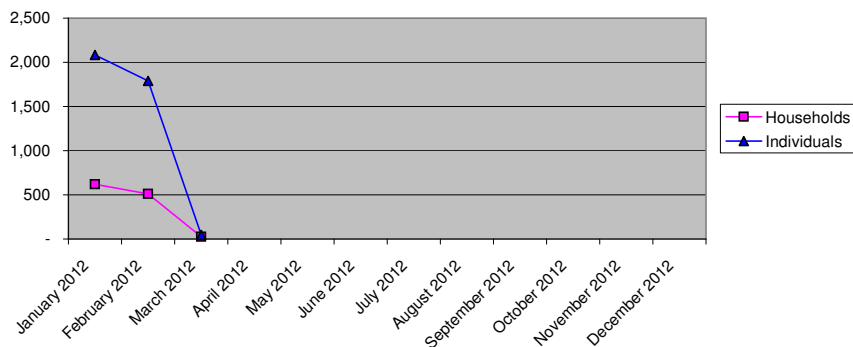
Date	Newly Arrived Individuals	Pre-registered by ARRA *
Thu 01 Mar 12	46	46
Fri 02 Mar 12		
Sat 03 Mar 12		
Sun 04 Mar 12		
Mon 05 Mar 12		
Tue 06 Mar 12		
Wed 07 Mar 12		
Thu 08 Mar 12		
Fri 09 Mar 12		
Sat 10 Mar 12		
Sun 11 Mar 12		
Mon 12 Mar 12		
Tue 13 Mar 12		
Wed 14 Mar 12		
Thu 15 Mar 12		
Fri 16 Mar 12		
Sat 17 Mar 12		
Sun 18 Mar 12		
Mon 19 Mar 12		
Tue 20 Mar 12		
Wed 21 Mar 12		
Thu 22 Mar 12		
Fri 23 Mar 12		
Sat 24 Mar 12		
Sun 25 Mar 12		
Mon 26 Mar 12		
Tue 27 Mar 12		
Wed 28 Mar 12		
Thu 29 Mar 12		
Fri 30 Mar 12		
Sat 31 Mar 12		
TOTAL THIS MONTH	46	46

* Pre-registration by ARRA is not necessarily done on the day of Arrival

** Represent days when ARRA was not receiving Asylum seekers.

The number of those received during these days is include in the figure of next receiving day.

Figure 1.3 - Pre-Registration Trends in 2012 (Reception Centre/ ARRA)



Note: these are registration volumes by month, not cumulative figures.

Table 1.3 - Pre-Registration Trends in 2012 (Reception Centre/ ARRA)

Month	Households	Individuals
January 2012	621	2,084
February 2012	512	1,789
March 2012	24	46
April 2012		
May 2012		
June 2012		
July 2012		
August 2012		
September 2012		
October 2012		
November 2012		
December 2012		
Total	1,157	3,919

Table 1.4 - Registration & Relocation Trends in Transit Centre up to date

Stage of Registration & Relocation	Individuals
Total individuals fully registered so far this month	119
Total individuals relocated to camps so far this month	243
Total individuals fully processed (have ration card), but not yet relocated	215

Camp population by Age and Sex breakdown

As of 01 Feb 2012

Table 2.1 - ALL CAMPS Demographic Breakdown*

Age Group	Sex				Total	
	Male	(%)	Female	(%)	Total	(%)
0 - 4	15,940	10.9%	15,484	10.6%	31,424	21.6%
5 - 11	24,669	16.9%	23,811	16.3%	48,480	33.2%
12 - 17	9,537	6.5%	8,562	5.9%	18,099	12.4%
18 - 59	16,280	11.2%	28,091	19.3%	44,371	30.4%
60 and above	1,752	1.2%	1,693	1.2%	3,445	2.4%
Total ALL CAMPS	68,178	46.8%	77,641	53.2%	145,819	100.0%

* These total figures apply only to camps, not to the Transit Centre or Reception Centre

Figure 2.1 - ALL CAMPS Demographic Breakdown*

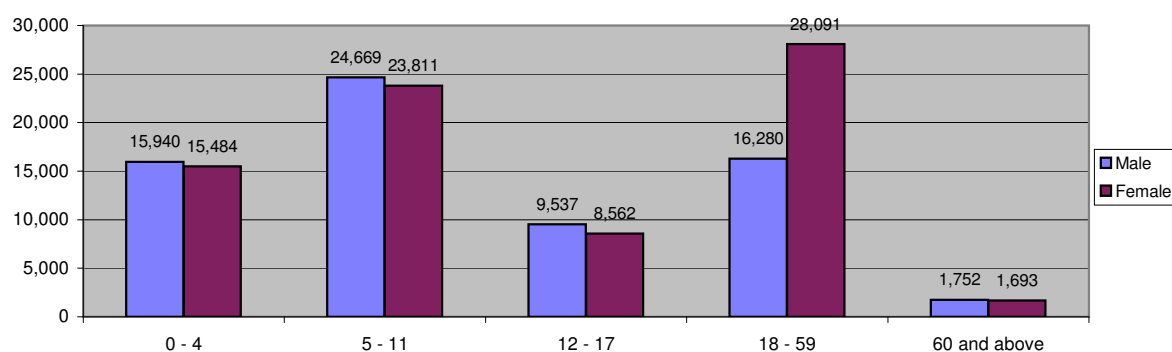


Table 2.2 - Melkadida Camp Demographic Breakdown

911

Age Group	Sex				Total	
	Male	(%)	Female	(%)	Total	(%)
0 - 4	4,004	9.8%	3,778	9.2%	7,782	19.0%
5 - 11	7,365	17.9%	7,191	17.5%	14,556	35.5%
12 - 17	2,905	7.1%	2,738	6.7%	5,643	13.7%
18 - 59	4,152	10.1%	7,997	19.5%	12,149	29.6%
60 and above	462	1.1%	452	1.1%	914	2.2%
Total Malkadida	18,888	46.0%	22,156	54.0%	41,044	100.0%

Figure 2.2 - Melkadida Camp Demographic Breakdown*

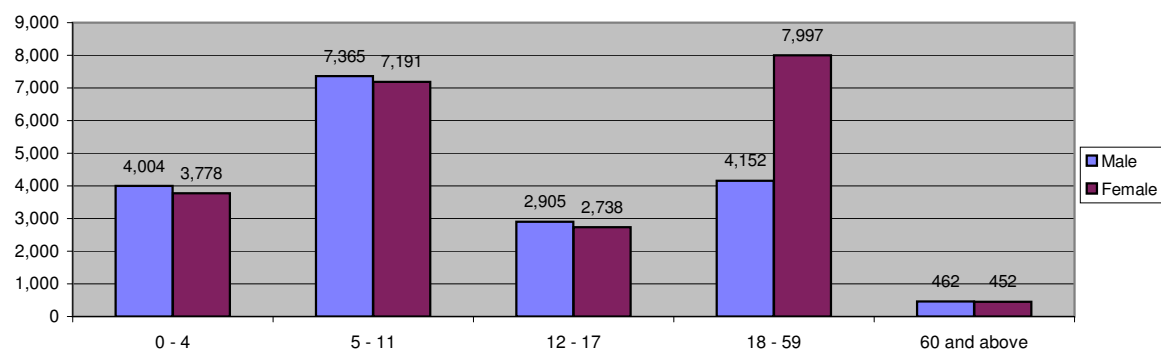


Table 2.3 - Bokolmanyo Camp Demographic Breakdown

Age Group	Sex				Total	
	Male	(%)	Female	(%)	Total	(%)
0 - 4	3,591	9.3%	3,661	9.5%	7,252	18.7%
5 - 11	6,784	17.5%	6,541	16.9%	13,325	34.4%
12 - 17	2,858	7.4%	2,404	6.2%	5,262	13.6%
18 - 59	4,392	11.4%	7,631	19.7%	12,023	31.1%
60 and above	428	1.1%	401	1.0%	829	2.1%
Total Bokolmanyo	18,053	46.7%	20,638	53.3%	38,691	100.0%

Figure 2.3 - Bokolmanyo Camp Demographic Breakdown*

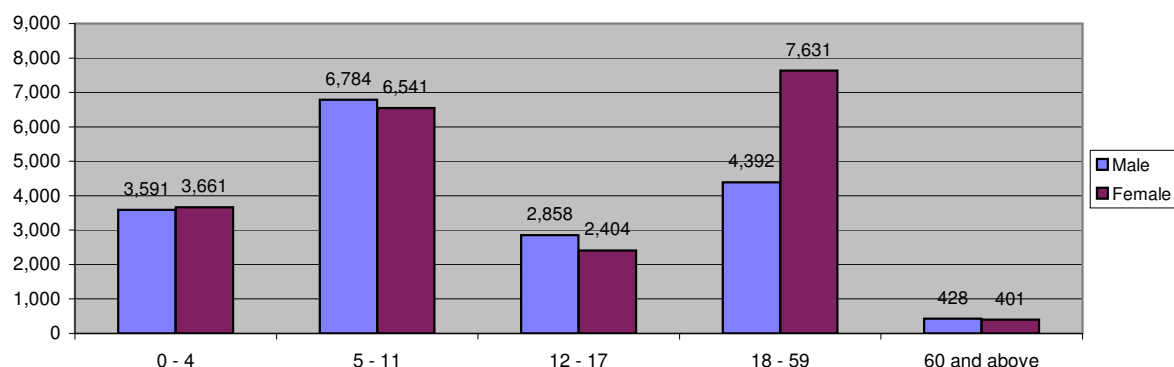


Table 2.4 - Kobe Camp Demographic Breakdown

Age Group	Sex				Total	
	Male	(%)	Female	(%)	Total	(%)
0 - 4	2,760	10.6%	2,641	10.1%	5,401	20.7%
5 - 11	4,507	17.2%	4,151	15.9%	8,658	33.1%
12 - 17	1,618	6.2%	1,367	5.2%	2,985	11.4%
18 - 59	3,337	12.8%	4,959	19.0%	8,296	31.7%
60 and above	418	1.6%	383	1.5%	801	3.1%
Total Kobe	12,640	48.4%	13,501	51.6%	26,141	100.0%

Figure 2.4 - Kobe Camp Demographic Breakdown*

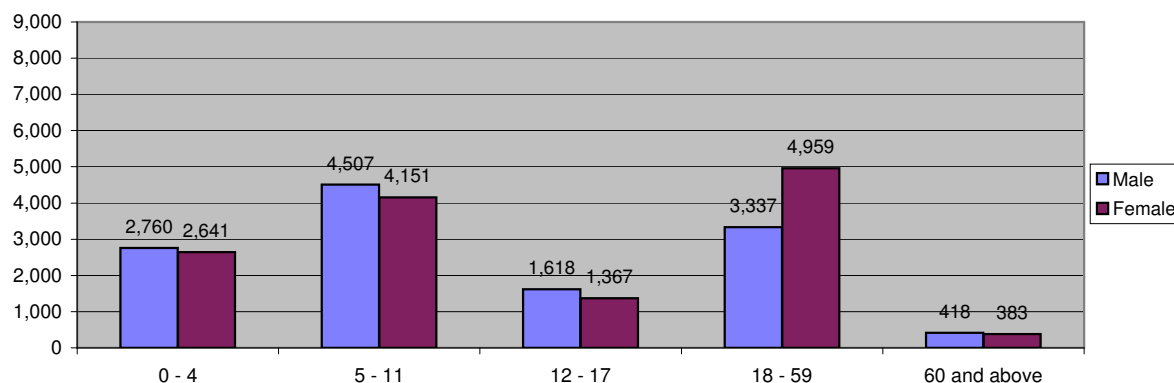


Table 2.5 - Hilaweyn Camp Demographic Breakdown

Age Group	Sex				Total	
	Male	(%)	Female	(%)	Total	(%)
0 - 4	3,579	13.8%	3,478	13.4%	7,057	27.2%
5 - 11	3,904	15.1%	3,852	14.9%	7,756	29.9%
12 - 17	1,440	5.6%	1,330	5.1%	2,770	10.7%
18 - 59	2,887	11.1%	4,867	18.8%	7,754	29.9%
60 and above	302	1.2%	281	1.1%	583	2.2%
Total Hilaweyn	12,112	46.7%	13,808	53.3%	25,920	100.0%

Figure 2.5 - Hilaweyn Camp Demographic Breakdown*

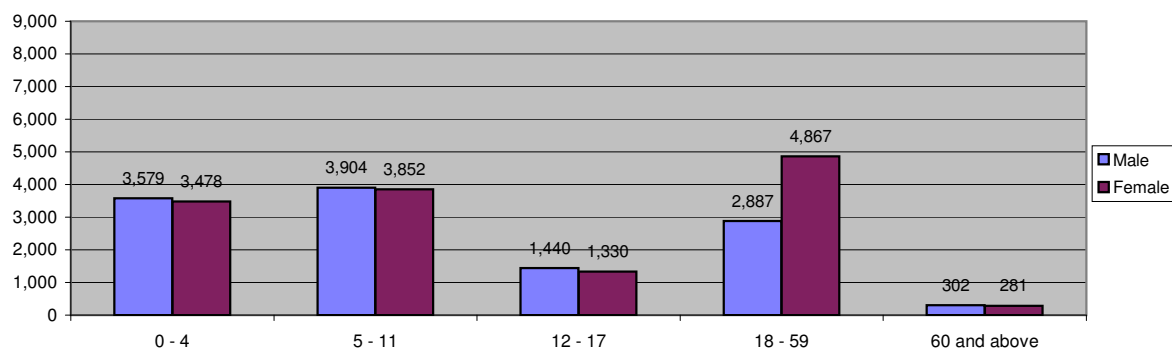


Table 2.6 - Buramino Camp Demographic Breakdown

Age Group	Sex				Total	
	Male	(%)	Female	(%)	Total	(%)
0 - 4	2,006	14.3%	1,926	13.7%	3,932	28.0%
5 - 11	2,109	15.0%	2,076	14.8%	4,185	29.8%
12 - 17	716	5.1%	723	5.2%	1,439	10.3%
18 - 59	1,512	10.8%	2,637	18.8%	4,149	29.6%
60 and above	142	1.0%	176	1.3%	318	2.3%
Total Buramino	6,485	46.2%	7,538	53.8%	14,023	100.0%

Figure 2.6 - Buramino Camp Demographic Breakdown*

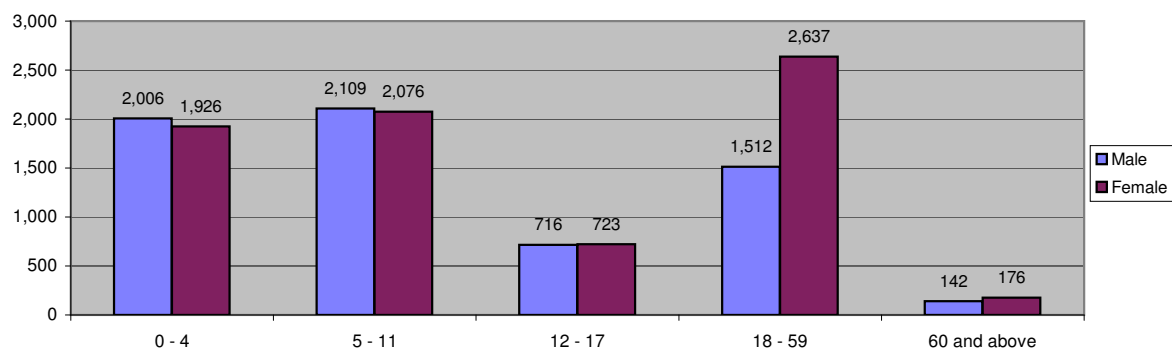


Table 2.7 - Dollo Ado Transit Centre Demographic Breakdown

Age Group	Sex				Total	
	Male	(%)	Female	(%)	Total	(%)
0 - 4	26	9.2%	42	14.8%	68	24.0%
5 - 11	43	15.2%	29	10.2%	72	25.4%
12 - 17	29	10.2%	15	5.3%	44	15.5%
18 - 59	53	18.7%	37	13.1%	90	31.8%
60 and above	5	1.8%	4	1.4%	9	3.2%
Total TransitCentre	156	55.1%	127	44.9%	283	100.0%

Figure 2.7 - Dollo Ado Transit Centre Demographic Breakdown

