

Dollo Ado Population Statistical Report

As of 19 Mar 2012

Figure 1.1 - Total Refugee Population in Dollo Ado

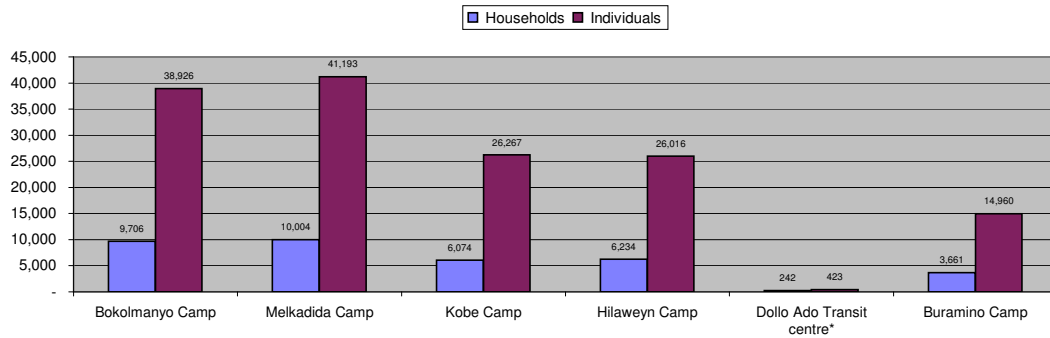


Table 1.1 - Total Refugee Population in Dollo Ado

Site/Camp	As of 31 Dec 2010		As of 31 Dec 2011		Current Total	
	Households	Individuals	Households	Individuals	Households	Individuals
Bokolmanyo Camp	3,988	14,988	9,624	38,501	9,706	38,926
Melkadida Camp	6,452	25,491	10,024	40,696	10,004	41,193
Kobe Camp	n/a	n/a	5,946	26,033	6,074	26,267
Hilaweyn Camp	n/a	n/a	6,119	25,747	6,234	26,016
Buramino Camp	n/a	n/a	911	4,045	3,661	14,960
Camp Sub-Total	10,440	40,479	32,624	135,022	35,679	147,362
Dollo Ado Transit centre*	n/a	n/a	1,902	7,284	242	423
Temporary Locations Sub-Total	n/a	n/a	n/a	n/a	242	423
GRAND TOTAL ALL LOCATIONS	10,440	40,479	34,526	142,306	35,921	147,785

* Individuals currently in the Transit Centre. All new arrivals are registered at the Transit Centre and are subsequently relocated to the camps.

Figure 1.2 - New Arrivals at Reception Centre During Current Month (Weekly)

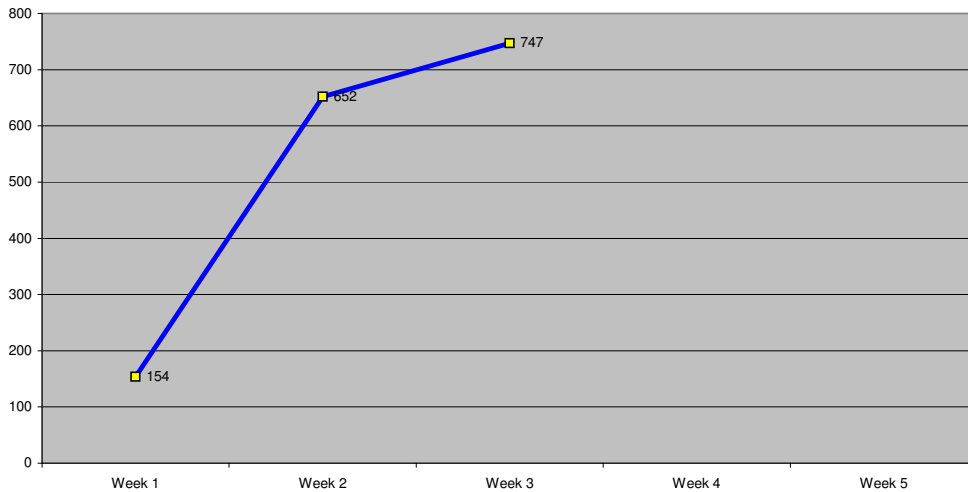


Table 1.2 - Daily New Arrivals and Pre-registration by ARRA at the Reception Centre

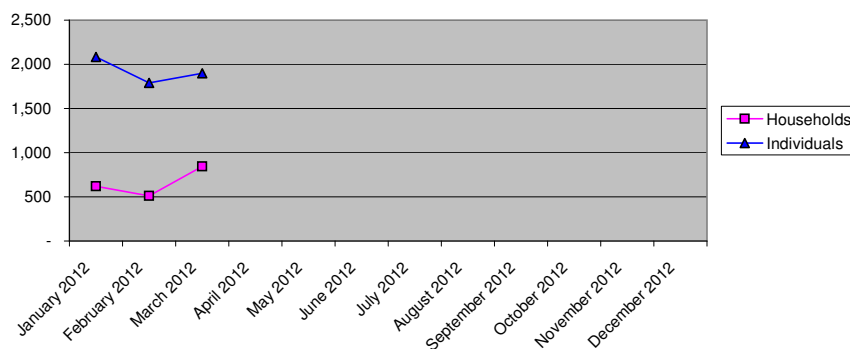
Date	Newly Arrived Individuals	Pre-registered by ARRA *
Thu 01 Mar 12	46	46
Fri 02 Mar 12		**
Sat 03 Mar 12	108	108
Sun 04 Mar 12		**
Mon 05 Mar 12	236	220
Tue 06 Mar 12	139	128
Wed 07 Mar 12	79	71
Thu 08 Mar 12	75	70
Fri 09 Mar 12	81	76
Sat 10 Mar 12	42	42
Sun 11 Mar 12		**
Mon 12 Mar 12	203	183
Tue 13 Mar 12	164	151
Wed 14 Mar 12	117	108
Thu 15 Mar 12	81	74
Fri 16 Mar 12	102	96
Sat 17 Mar 12	80	74
Sun 18 Mar 12		**
Mon 19 Mar 12	472	453
Tue 20 Mar 12		
Wed 21 Mar 12		
Thu 22 Mar 12		
Fri 23 Mar 12		
Sat 24 Mar 12		
Sun 25 Mar 12		
Mon 26 Mar 12		
Tue 27 Mar 12		
Wed 28 Mar 12		
Thu 29 Mar 12		
Fri 30 Mar 12		
Sat 31 Mar 12		
TOTAL THIS MONTH	2,025	1,900

* Pre-registration by ARRA is not necessarily done on the day of Arrival

** Represent days when ARRA was not receiving Asylum seekers.

The number of those received during these days is include in the figure of next receiving day.

Figure 1.3 - Pre-Registration Trends in 2012 (Reception Centre/ ARRA)



Note: these are registration volumes by month, not cumulative figures.

Table 1.3 - Pre-Registration Trends in 2012 (Reception Centre/ ARRA)

Month	Households	Individuals
January 2012	621	2,084
February 2012	512	1,789
March 2012	844	1,900
April 2012		
May 2012		
June 2012		
July 2012		
August 2012		
September 2012		
October 2012		
November 2012		
December 2012		
Total	1,977	5,773

Table 1.4 - Registration & Relocation Trends in Transit Centre up to date

Stage of Registration & Relocation	Individuals
Total individuals fully registered so far this month	1,453
Total individuals relocated to camps so far this month	1274
Total individuals fully processed (have ration card), but not yet relocated	307

Camp Population by Age and Sex breakdown

As of 19 Mar 2012

Table 2.1 - ALL CAMPS Demographic Breakdown*

Age Group	Sex				Total	
	Male	(%)	Female	(%)	Total	(%)
0 - 4	14,959	10.2%	14,569	9.9%	29,528	20.0%
5 - 11	25,719	17.5%	24,778	16.8%	50,497	34.3%
12 - 17	9,848	6.7%	8,763	5.9%	18,611	12.6%
18 - 59	16,739	11.4%	28,480	19.3%	45,219	30.7%
60 and above	1,791	1.2%	1,716	1.2%	3,507	2.4%
Total ALL CAMPS	69,056	46.9%	78,306	53.1%	147,362	100.0%

* These total figures apply only to camps, not to the Transit Centre or Reception Centre

Figure 2.1 - ALL CAMPS Demographic Breakdown*

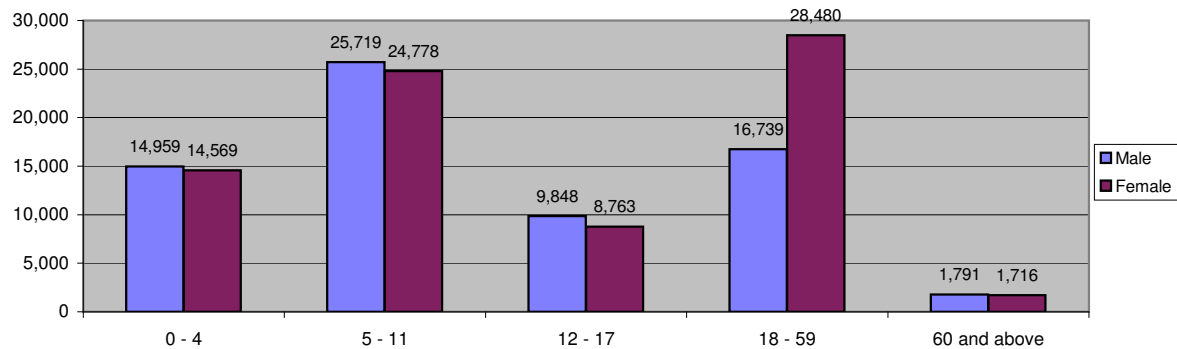


Table 2.2 - Melkadida Camp Demographic Breakdown

911

Age Group	Sex				Total	
	Male	(%)	Female	(%)	Total	(%)
0 - 4	4,040	9.8%	3,792	9.2%	7,832	19.0%
5 - 11	7,376	17.9%	7,204	17.5%	14,580	35.4%
12 - 17	2,916	7.1%	2,740	6.7%	5,656	13.7%
18 - 59	4,195	10.2%	8,007	19.4%	12,202	29.6%
60 and above	468	1.1%	455	1.1%	923	2.2%
Total Melkadida	18,995	46.1%	22,198	53.9%	41,193	100.0%

Figure 2.2 - Melkadida Camp Demographic Breakdown*

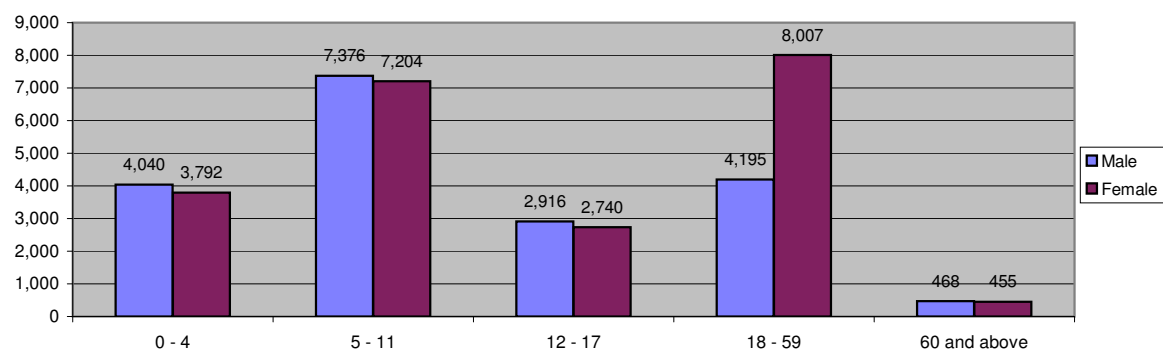


Table 2.3 - Bokolmanyo Camp Demographic Breakdown

Age Group	Sex				Total	
	Male	(%)	Female	(%)	Total	(%)
0 - 4	3,632	9.3%	3,702	9.5%	7,334	18.8%
5 - 11	6,812	17.5%	6,569	16.9%	13,381	34.4%
12 - 17	2,871	7.4%	2,417	6.2%	5,288	13.6%
18 - 59	4,423	11.4%	7,665	19.7%	12,088	31.1%
60 and above	431	1.1%	404	1.0%	835	2.1%
Total Bokolmanyo	18,169	46.7%	20,757	53.3%	38,926	100.0%

Figure 2.3 - Bokolmanyo Camp Demographic Breakdown*

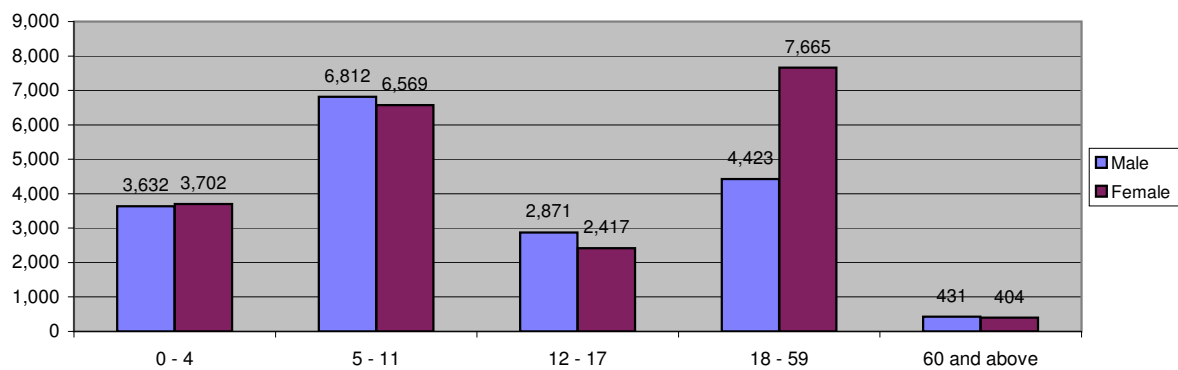


Table 2.4 - Kobe Camp Demographic Breakdown

Age Group	Sex				Total	
	81	74	Female	(%)	Total	(%)
0 - 4	2,769	10.5%	2,652	10.1%	5,421	20.6%
5 - 11	4,506	17.2%	4,152	15.8%	8,658	33.0%
12 - 17	1,633	6.2%	1,369	5.2%	3,002	11.4%
18 - 59	3,414	13.0%	4,965	18.9%	8,379	31.9%
60 and above	423	1.6%	384	1.5%	807	3.1%
Total Kobe	12,745	48.5%	13,522	51.5%	26,267	100.0%

Figure 2.4 - Kobe Camp Demographic Breakdown*

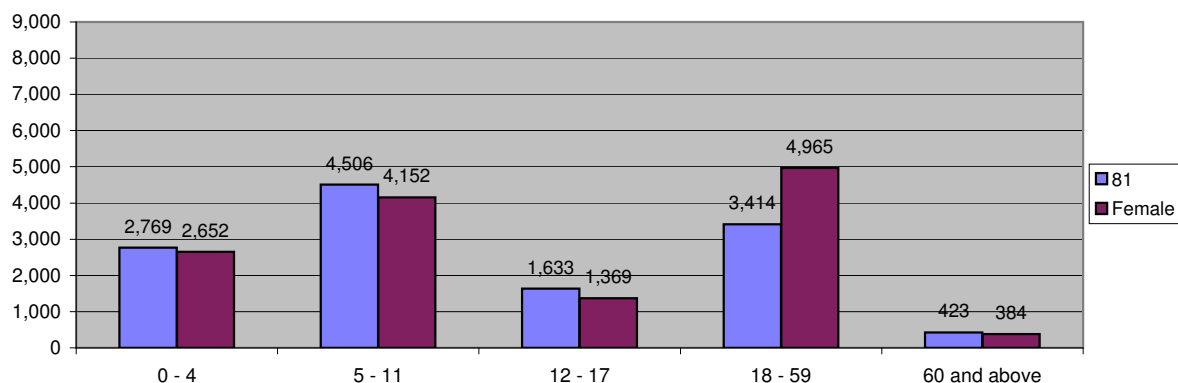


Table 2.5 - Hilaweyn Camp Demographic Breakdown

Age Group	Sex				Total	
	Male	(%)	Female	(%)	Total	(%)
0 - 4	2,780	10.7%	2,728	10.5%	5,508	21.2%
5 - 11	4,487	17.2%	4,407	16.9%	8,894	34.2%
12 - 17	1,588	6.1%	1,430	5.5%	3,018	11.6%
18 - 59	3,004	11.5%	4,993	19.2%	7,997	30.7%
60 and above	313	1.2%	286	1.1%	599	2.3%
Total Hilaweyn	12,172	46.8%	13,844	53.2%	26,016	100.0%

Figure 2.5 - Hilaweyn Camp Demographic Breakdown*

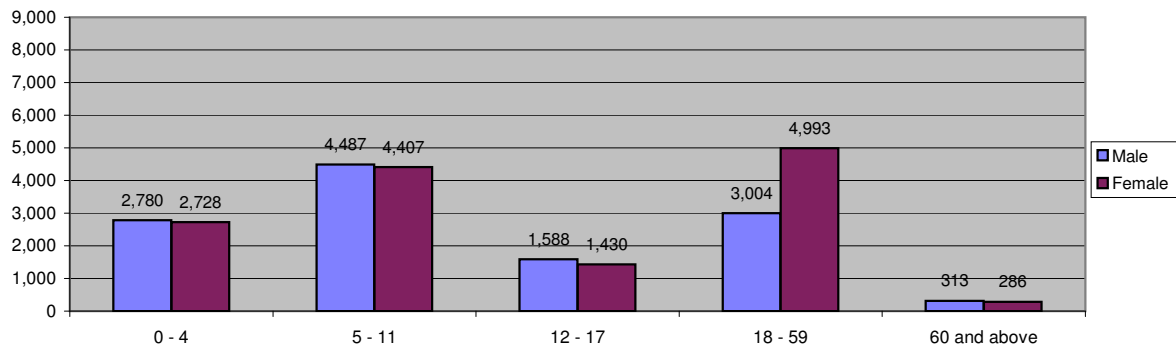


Table 2.6 - Buramino Camp Demographic Breakdown

Age Group	Sex				Total	
	Male	(%)	Female	(%)	Total	(%)
0 - 4	1,738	11.6%	1,695	11.3%	3,433	22.9%
5 - 11	2,538	17.0%	2,446	16.4%	4,984	33.3%
12 - 17	840	5.6%	807	5.4%	1,647	11.0%
18 - 59	1,703	11.4%	2,850	19.1%	4,553	30.4%
60 and above	156	1.0%	187	1.3%	343	2.3%
Total Buramino	6,975	46.6%	7,985	53.4%	14,960	100.0%

Figure 2.6 - Buramino Camp Demographic Breakdown*

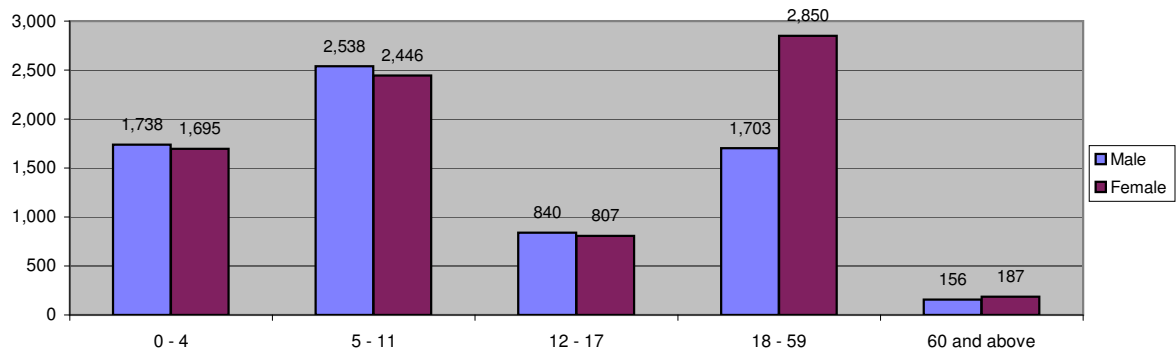


Table 2.7 - Dollo Ado Transit Centre Demographic Breakdown

Age Group	Sex				Total	
	Male	(%)	Female	(%)	Total	(%)
0 - 4	35	8.3%	46	10.9%	81	19.1%
5 - 11	49	11.6%	38	9.0%	87	20.6%
12 - 17	41	9.7%	22	5.2%	63	14.9%
18 - 59	127	30.0%	44	10.4%	171	40.4%
60 and above	17	4.0%	4	0.9%	21	5.0%
Total Transit Centre	269	63.6%	154	36.4%	423	100.0%

Figure 2.7 - Dollo Ado Transit Centre Demographic Breakdown

