

Dollo Ado Population Statistical Report

As of 27 Mar 2012

Figure 1.1 - Total Refugee Population in Dollo Ado

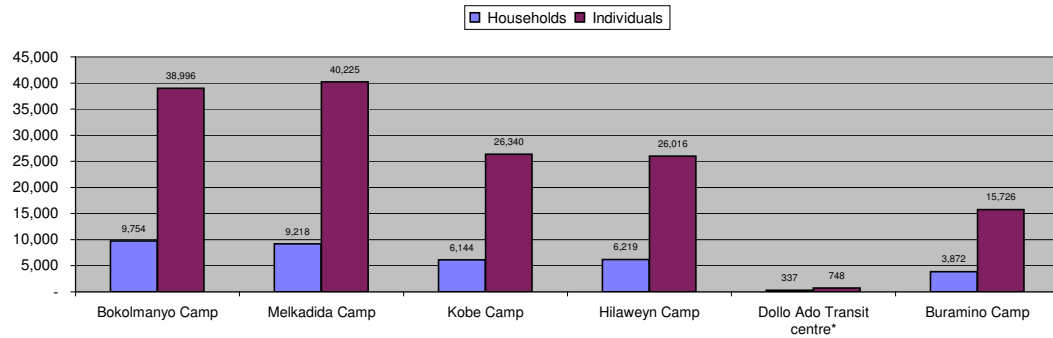


Table 1.1 - Total Refugee Population in Dollo Ado

Site/Camp	As of 31 Dec 2010		As of 31 Dec 2011		Current Total	
	Households	Individuals	Households	Individuals	Households	Individuals
Bokolmanyo Camp	3,988	14,988	9,624	38,501	9,754	38,996
Melkadida Camp	6,452	25,491	10,024	40,696	9,218	40,225
Kobe Camp	n/a	n/a	5,946	26,033	6,144	26,340
Hilaweyn Camp	n/a	n/a	6,119	25,747	6,219	26,016
Buramino Camp	n/a	n/a	911	4,045	3,872	15,726
Camp Sub-Total	10,440	40,479	32,624	135,022	35,207	147,303
Dollo Ado Transit centre*	n/a	n/a	1,902	7,284	337	748
Temporary Locations Sub-Total	n/a	n/a	n/a	n/a	337	748
GRAND TOTAL ALL LOCATIONS	10,440	40,479	34,526	142,306	35,544	148,051

* Individuals currently in the Transit Centre. All new arrivals are registered at the Transit Centre and are subsequently relocated to the camps.

Figure 1.2 - New Arrivals at Reception Centre During Current Month (Weekly)

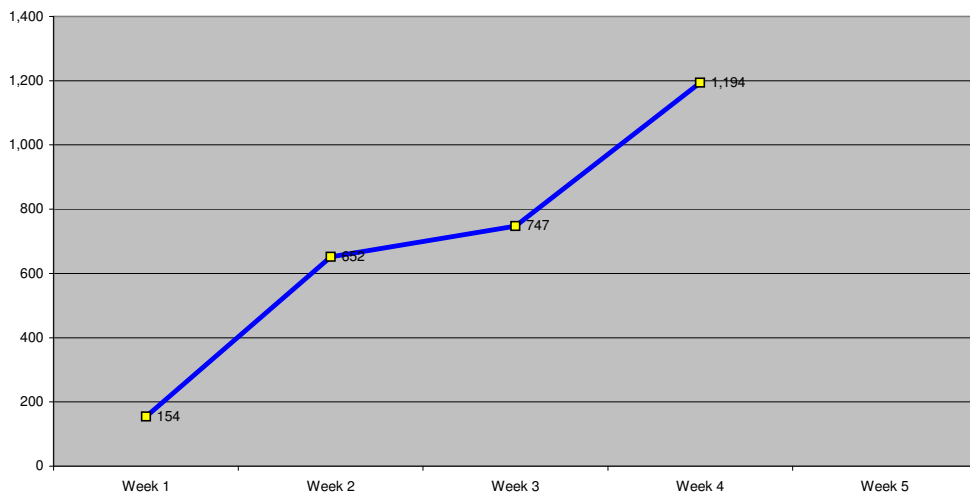


Table 1.2 - Daily New Arrivals and Pre-registration by ARRA at the Reception Centre

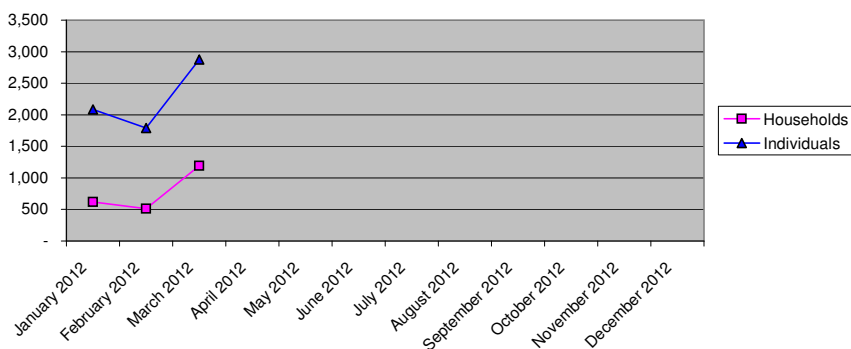
Date	Newly Arrived Individuals	Pre-registered by ARRA *
Thu 01 Mar 12	46	46
Fri 02 Mar 12		**
Sat 03 Mar 12	108	108
Sun 04 Mar 12		**
Mon 05 Mar 12	236	220
Tue 06 Mar 12	139	128
Wed 07 Mar 12	79	71
Thu 08 Mar 12	75	70
Fri 09 Mar 12	81	76
Sat 10 Mar 12	42	42
Sun 11 Mar 12		**
Mon 12 Mar 12	203	183
Tue 13 Mar 12	164	151
Wed 14 Mar 12	117	108
Thu 15 Mar 12	81	74
Fri 16 Mar 12	102	96
Sat 17 Mar 12	80	74
Sun 18 Mar 12		**
Mon 19 Mar 12	472	453
Tue 20 Mar 12	146	139
Wed 21 Mar 12	228	214
Thu 22 Mar 12	139	129
Fri 23 Mar 12	110	102
Sat 24 Mar 12	99	99
Sun 25 Mar 12		**
Mon 26 Mar 12	188	176
Tue 27 Mar 12	120	116
Wed 28 Mar 12		
Thu 29 Mar 12		
Fri 30 Mar 12		
Sat 31 Mar 12		
TOTAL THIS MONTH	3,055	2,875

* Pre-registration by ARRA is not necessarily done on the day of Arrival

** Represent days when ARRA was not receiving Asylum seekers.

The number of those received during these days is include in the figure of next receiving day.

Figure 1.3 - Pre-Registration Trends in 2012 (Reception Centre/ ARRA)



Note: these are registration volumes by month, not cumulative figures.

Table 1.3 - Pre-Registration Trends in 2012 (Reception Centre/ ARRA)

Month	Households	Individuals
January 2012	621	2,084
February 2012	512	1,789
March 2012	1,190	2,875
April 2012		
May 2012		
June 2012		
July 2012		
August 2012		
September 2012		
October 2012		
November 2012		
December 2012		
Total	2,323	6,748

Table 1.4 - Registration & Relocation Trends in Transit Centre up to date

Stage of Registration & Relocation	Individuals
Total individuals fully registered so far this month	2,735
Total individuals relocated to camps so far this month	2047
Total individuals fully processed (have ration card), but not yet relocated	553

Camp Population by Age and Sex breakdown

As of 27 Mar 2012

Table 2.1 - ALL CAMPS Demographic Breakdown*

Age Group	Sex				Total	
	Male	(%)	Female	(%)	Total	(%)
0 - 4	15,045	10.2%	14,663	10.0%	29,708	20.2%
5 - 11	25,789	17.5%	24,839	16.9%	50,628	34.4%
12 - 17	9,879	6.7%	8,754	5.9%	18,633	12.6%
18 - 59	16,532	11.2%	28,353	19.2%	44,885	30.5%
60 and above	1,772	1.2%	1,677	1.1%	3,449	2.3%
Total ALL CAMPS	69,017	46.9%	78,286	53.1%	147,303	100.0%

* These total figures apply only to camps, not to the Transit Centre or Reception Centre

Figure 2.1 - ALL CAMPS Demographic Breakdown*

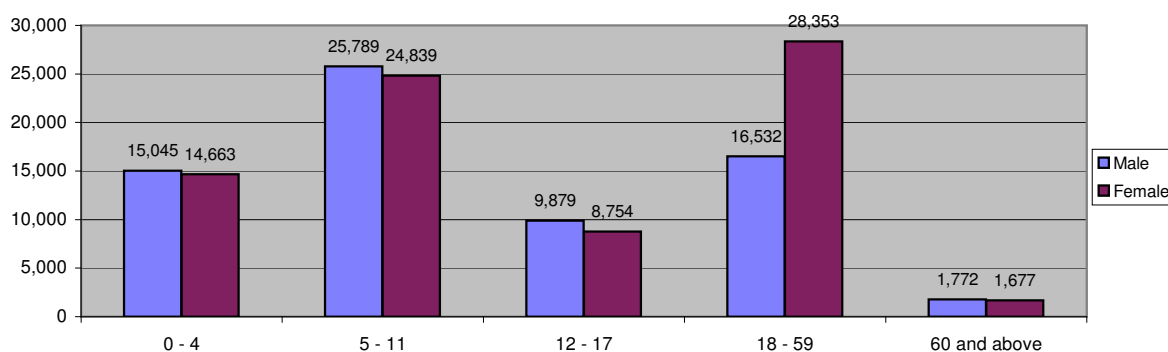


Table 2.2 - Melkadida Camp Demographic Breakdown

Age Group	Sex				Total	
	Male	(%)	Female	(%)	Total	(%)
0 - 4	4,010	10.0%	3,777	9.4%	7,787	19.4%
5 - 11	7,331	18.2%	7,157	17.8%	14,488	36.0%
12 - 17	2,883	7.2%	2,691	6.7%	5,574	13.9%
18 - 59	3,801	9.4%	7,737	19.2%	11,538	28.7%
60 and above	429	1.1%	409	1.0%	838	2.1%
Total Melkadida	18,454	45.9%	21,771	54.1%	40,225	100.0%

Figure 2.2 - Melkadida Camp Demographic Breakdown

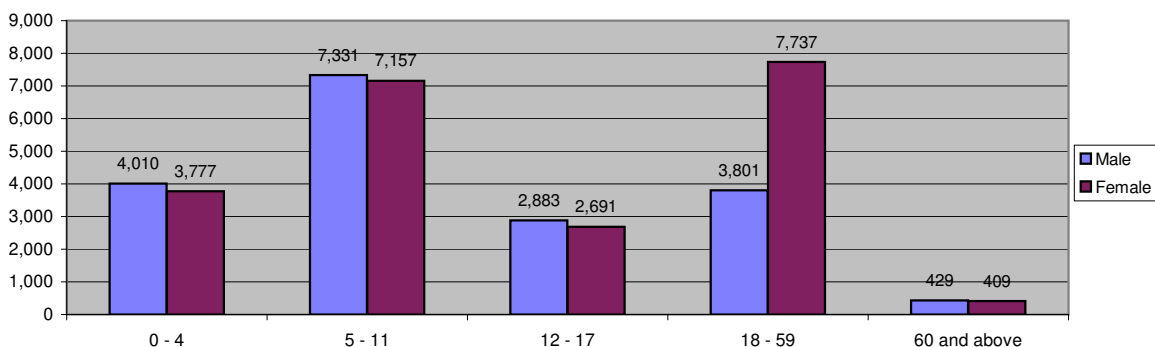


Table 2.3 - Bokolmanyo Camp Demographic Breakdown

Age Group	Sex				Total	
	Male	(%)	Female	(%)	Total	(%)
0 - 4	3,640	9.3%	3,707	9.5%	7,347	18.8%
5 - 11	6,815	17.5%	6,576	16.9%	13,391	34.3%
12 - 17	2,874	7.4%	2,417	6.2%	5,291	13.6%
18 - 59	4,456	11.4%	7,671	19.7%	12,127	31.1%
60 and above	437	1.1%	403	1.0%	840	2.2%
Total Bokolmanyo	18,222	46.7%	20,774	53.3%	38,996	100.0%

Figure 2.3 - Bokolmanyo Camp Demographic Breakdown

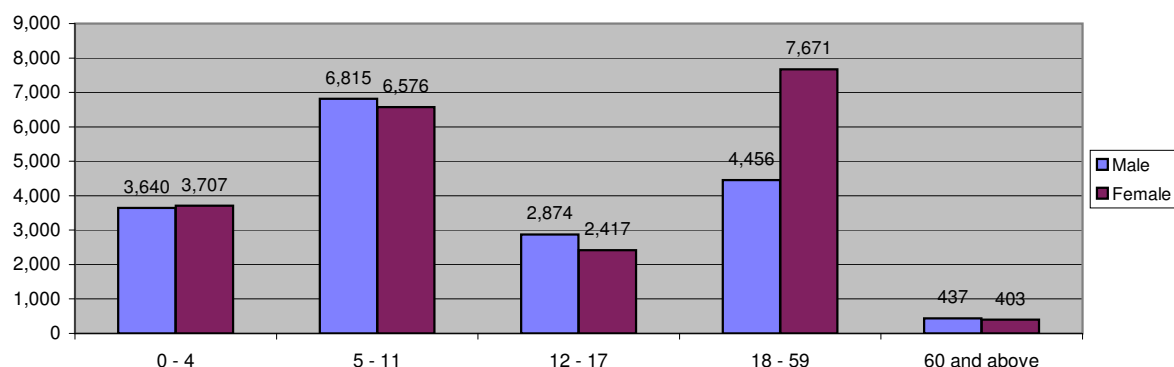


Table 2.4 - Kobe Camp Demographic Breakdown

Age Group	Sex				Total	
	81	74	Female	(%)	Total	(%)
0 - 4	2,769	10.5%	2,653	10.1%	5,422	20.6%
5 - 11	4,511	17.1%	4,155	15.8%	8,666	32.9%
12 - 17	1,641	6.2%	1,370	5.2%	3,011	11.4%
18 - 59	3,461	13.1%	4,967	18.9%	8,428	32.0%
60 and above	429	1.6%	384	1.5%	813	3.1%
Total Kobe	12,811	48.6%	13,529	51.4%	26,340	100.0%

Figure 2.4 - Kobe Camp Demographic Breakdown

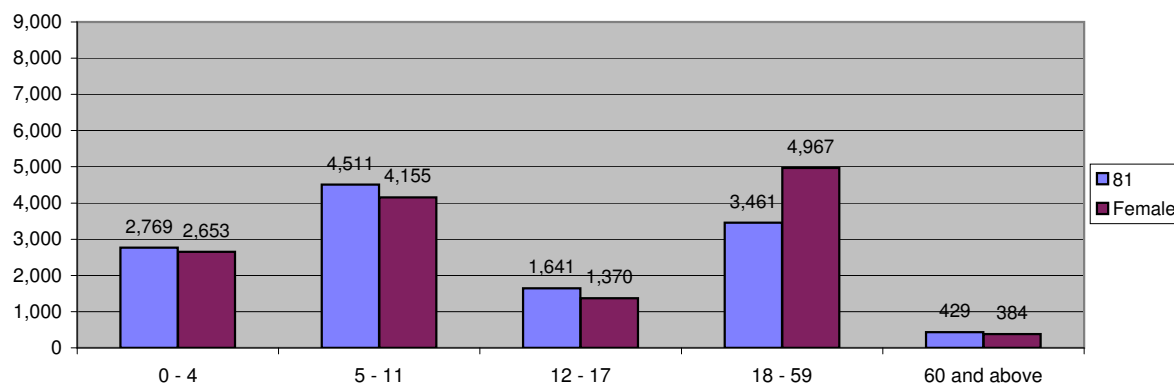


Table 2.5 - Hilaweyn Camp Demographic Breakdown

Age Group	Sex				Total	
	Male	(%)	Female	(%)	Total	(%)
0 - 4	2,780	10.7%	2,728	10.5%	5,508	21.2%
5 - 11	4,487	17.2%	4,407	16.9%	8,894	34.2%
12 - 17	1,588	6.1%	1,430	5.5%	3,018	11.6%
18 - 59	3,004	11.5%	4,993	19.2%	7,997	30.7%
60 and above	313	1.2%	286	1.1%	599	2.3%
Total Hilaweyn	12,172	46.8%	13,844	53.2%	26,016	100.0%

Figure 2.5 - Hilaweyn Camp Demographic Breakdown

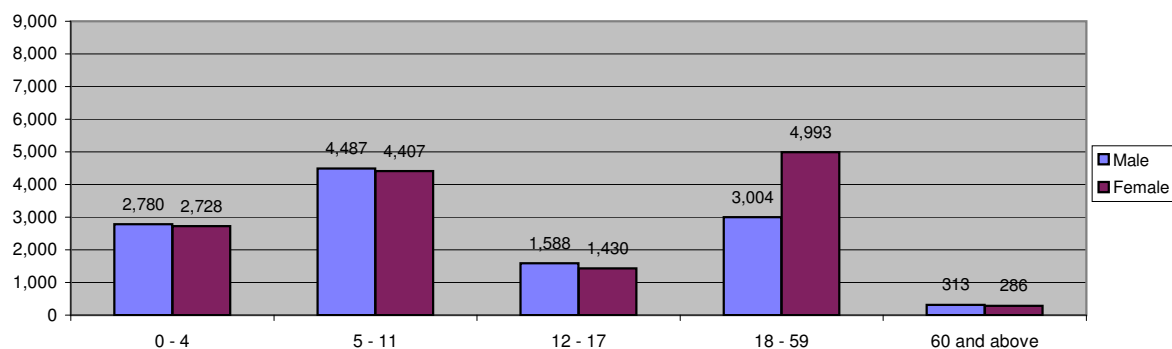


Table 2.6 - Buramino Camp Demographic Breakdown

Age Group	Sex				Total	
	Male	(%)	Female	(%)	Total	(%)
0 - 4	1,846	11.7%	1,798	11.4%	3,644	23.2%
5 - 11	2,645	16.8%	2,544	16.2%	5,189	33.0%
12 - 17	893	5.7%	846	5.4%	1,739	11.1%
18 - 59	1,810	11.5%	2,985	19.0%	4,795	30.5%
60 and above	164	1.0%	195	1.2%	359	2.3%
Total Buramino	7,358	46.8%	8,368	53.2%	15,726	100.0%

Figure 2.6 - Buramino Camp Demographic Breakdown

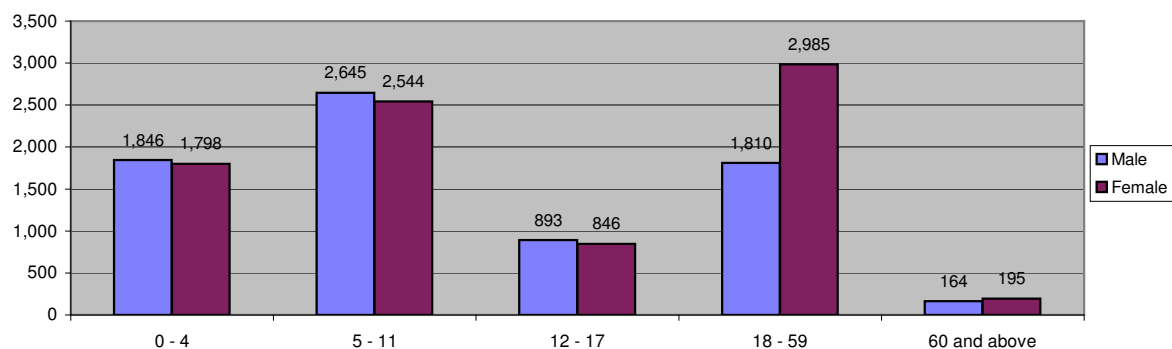


Table 2.7 - Dollo Ado Transit Centre Demographic Breakdown

Age Group	Sex				Total	
	Male	(%)	Female	(%)	Total	(%)
0 - 4	89	11.9%	82	11.0%	171	22.9%
5 - 11	104	13.9%	71	9.5%	175	23.4%
12 - 17	53	7.1%	44	5.9%	97	13.0%
18 - 59	151	20.2%	101	13.5%	252	33.7%
60 and above	41	5.5%	12	1.6%	53	7.1%
Total Transit Centre	438	58.6%	310	41.4%	748	100.0%

Figure 2.7 - Dollo Ado Transit Centre Demographic Breakdown

