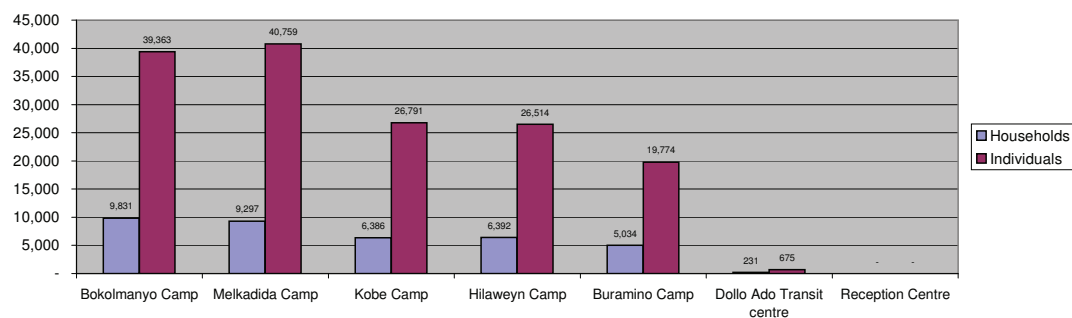


## Dollo Ado Population end of Month Statistical Report

*As of 31 May 2012*

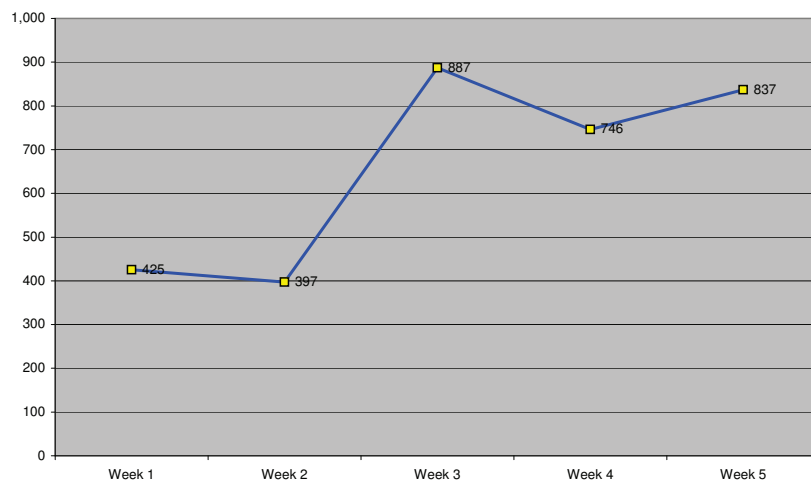
**Figure 1.1 - Total Refugee Population in Dollo Ado**



**Table 1.1 - Total Refugee Population in Dollo Ado**

Site/Camp	Current Total		As of 31 Dec 2010		As of 31 Dec 2011	
	Households	Individuals	Households	Individuals	Households	Individuals
Bokolmany Camp	9,831	39,363	3,988	14,988	9,624	38,501
Melkadida Camp	9,297	40,759	6,452	25,491	10,024	40,696
Kobe Camp	6,386	26,791	n/a	n/a	5,946	26,033
Hilaweyn Camp	6,392	26,514	n/a	n/a	6,119	25,747
Buramino Camp	5,034	19,774	n/a	n/a	911	4,045
<b>Camp Sub-Total</b>	<b>36,940</b>	<b>153,201</b>	<b>10,440</b>	<b>40,479</b>	<b>32,624</b>	<b>135,022</b>
Dollo Ado Transit centre	231	675	n/a	n/a	231	675
Reception Centre	n/a	n/a	n/a	n/a	n/a	n/a
<b>Temporary Locations Sub-Total</b>	<b>231</b>	<b>675</b>	<b>n/a</b>	<b>n/a</b>	<b>231</b>	<b>675</b>
<b>GRAND TOTAL ALL LOCATIONS</b>	<b>37,171</b>	<b>153,876</b>	<b>10,440</b>	<b>40,479</b>	<b>32,855</b>	<b>135,697</b>

**Figure 1.2 - New Arrivals at Reception Centre by Week during the Current Month**



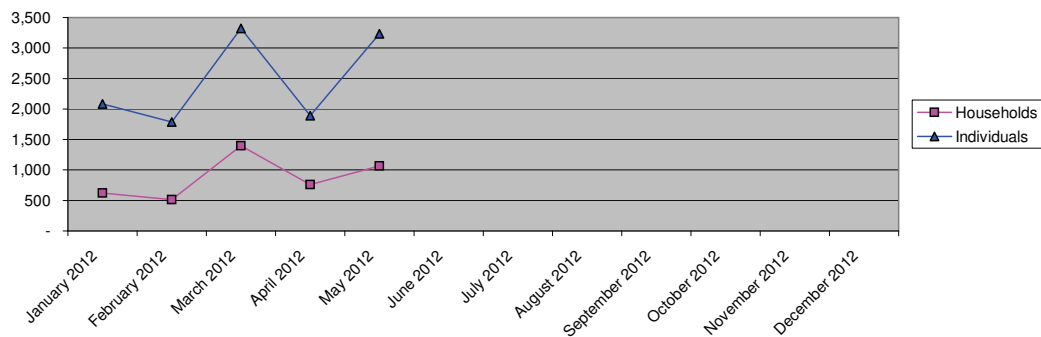
**Table 1.2 - Daily New Arrivals and Pre-registration by ARRA at the Reception Centre**

Date	Newly Arrived Individuals	Pre-registered by ARRA *
1-May-2012	46	46
2-May-2012	16	16
3-May-2012	65	65
4-May-2012	64	59
5-May-2012	16	16
6-May-2012		**
7-May-2012	218	218
8-May-2012	109	104
9-May-2012	32	32
10-May-2012	89	89
11-May-2012	38	28
12-May-2012	55	55
13-May-2012		**
14-May-2012	74	74
15-May-2012	189	176
16-May-2012	139	131
17-May-2012	104	98
18-May-2012	56	53
19-May-2012	81	81
20-May-2012		**
21-May-2012	318	318
22-May-2012	118	118
23-May-2012	306	306
24-May-2012	107	107
25-May-2012	99	99
26-May-2012	116	116
27-May-2012		**
28-May-2012		**
29-May-2012	415	410
30-May-2012	272	272
31-May-2012	150	145
<b>TOTAL THIS MONTH</b>	<b>3,292</b>	<b>3,232</b>

\* Data Provided by ARRA. Blanks indicate days when ARRA was not receiving refugees.

The number of those received during these days is included in the figure of next receiving day.

**Figure 1.3 - Pre-Registration Trends in 2012 (Reception Centre/ ARRA) \***



\* These are registration volumes by month, not cumulative figures.

**Table 1.3 - Pre-Registration Trends in 2012 (Reception Centre/ ARRA)**

Month	Households	Individuals
January 2012	621	2,084
February 2012	512	1,789
March 2012	1,395	3,324
April 2012	762	1,892
May 2012	1,065	3,232
June 2012		
July 2012		
August 2012		
September 2012		
October 2012		
November 2012		
December 2012		
<b>Total</b>	<b>4,355</b>	<b>12,321</b>

**Table 1.4 - Registration & Relocation Trends in Transit Centre since 31 Dec 2011 (up to date)**

Stage of Registration & Relocation	Individuals
Total individuals fully registered so far this month	2,800
Total individuals relocated to camp so far this month	1,859
Total Individuals fully processed (hold ration card), but not yet relocated	614

## Camp population by Age and Sex breakdown

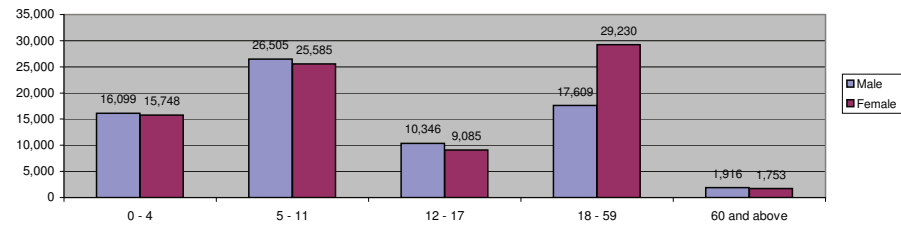
*As of 31 May 2012*

**Table 2.1 - ALL CAMPS Demographic Breakdown\***

Age Group	Sex				Total	
	Male	(%)	Female	(%)	Total	(%)
0 - 4	16,099	10.5%	15,748	10.2%	31,847	20.7%
5 - 11	26,505	17.2%	25,585	16.6%	52,090	33.9%
12 - 17	10,346	6.7%	9,085	5.9%	19,431	12.6%
18 - 59	17,609	11.4%	29,230	19.0%	46,839	30.4%
60 and above	1,916	1.2%	1,753	1.1%	3,669	2.4%
<b>Total ALL CAMPS</b>	<b>72,475</b>	<b>47.1%</b>	<b>81,401</b>	<b>52.9%</b>	<b>153,876</b>	<b>100.0%</b>

\* These total figures apply only to camps, not to the Transit Centre and Reception Centre

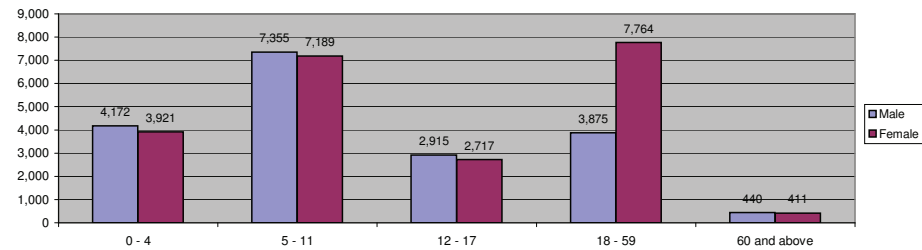
**Figure 2.1 - ALL CAMPS Demographic Breakdown\***



**Table 2.2 - Melkadida Camp Demographic Breakdown**

Age Group	Sex				Total	
	Male	(%)	Female	(%)	Total	(%)
0 - 4	4,172	10.2%	3,921	9.6%	8,093	19.9%
5 - 11	7,355	18.0%	7,189	17.6%	14,544	35.7%
12 - 17	2,915	7.2%	2,717	6.7%	5,632	13.8%
18 - 59	3,875	9.5%	7,764	19.0%	11,639	28.6%
60 and above	440	1.1%	411	1.0%	851	2.1%
<b>Melkadida Total</b>	<b>18,757</b>	<b>46.0%</b>	<b>22,002</b>	<b>54.0%</b>	<b>40,759</b>	<b>100.0%</b>

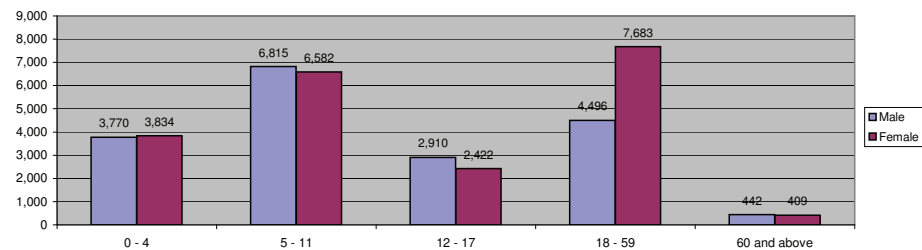
**Figure 2.2 - Melkadida Camp Demographic Breakdown**



**Table 2.3 - Bokolmany Camp Demographic Breakdown**

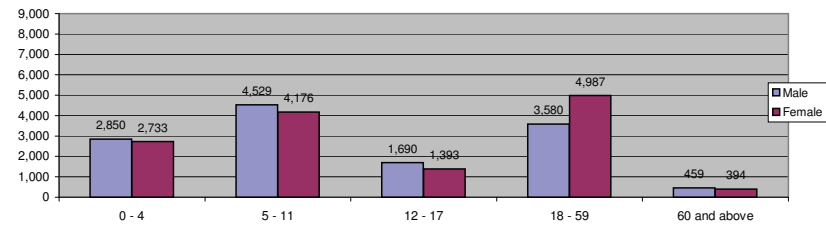
Age Group	Sex				Total	
	Male	(%)	Female	(%)	Total	(%)
0 - 4	3,770	9.6%	3,834	9.7%	7,604	19.3%
5 - 11	6,815	17.3%	6,582	16.7%	13,397	34.0%
12 - 17	2,910	7.4%	2,422	6.2%	5,332	13.5%
18 - 59	4,496	11.4%	7,683	19.5%	12,179	30.9%
60 and above	442	1.1%	409	1.0%	851	2.2%
<b>Bokolmany Total</b>	<b>18,433</b>	<b>46.8%</b>	<b>20,930</b>	<b>53.2%</b>	<b>39,363</b>	<b>100.0%</b>

**Figure 2.3 - Bokolmany Camp Demographic Breakdown**



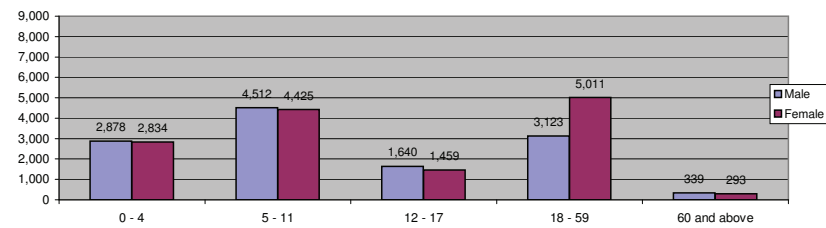
Age Group	Sex				Total	
	Male	( % )	Female	( % )	Total	( % )
0 - 4	2,850	10.6%	2,733	10.2%	5,583	20.8%
5 - 11	4,529	16.9%	4,176	15.6%	8,705	32.5%
12 - 17	1,690	6.3%	1,393	5.2%	3,083	11.5%
18 - 59	3,580	13.4%	4,987	18.6%	8,567	32.0%
60 and above	459	1.7%	394	1.5%	853	3.2%
<b>Kobe Total</b>	<b>13,108</b>	<b>48.9%</b>	<b>13,683</b>	<b>51.1%</b>	<b>26,791</b>	<b>100.0%</b>

Figure 2.4 - Kobe Camp Demographic Breakdown



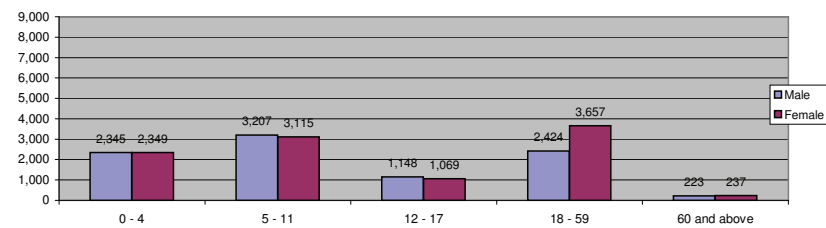
Age Group	Sex				Total	
	Male	( % )	Female	( % )	Total	( % )
0 - 4	2,878	10.9%	2,834	10.7%	5,712	21.5%
5 - 11	4,512	17.0%	4,425	16.7%	8,937	33.7%
12 - 17	1,640	6.2%	1,459	5.5%	3,099	11.7%
18 - 59	3,123	11.8%	5,011	18.9%	8,134	30.7%
60 and above	339	1.3%	293	1.1%	632	2.4%
<b>Hilaweyn Total</b>	<b>12,492</b>	<b>47.1%</b>	<b>14,022</b>	<b>52.9%</b>	<b>26,514</b>	<b>100.0%</b>

Figure 2.5 - Hilaweyn Camp Demographic Breakdown



Age Group	Sex				Total	
	Male	( % )	Female	( % )	Total	( % )
0 - 4	2,345	11.9%	2,349	11.9%	4,694	23.7%
5 - 11	3,207	16.2%	3,115	15.8%	6,322	32.0%
12 - 17	1,148	5.8%	1,069	5.4%	2,217	11.2%
18 - 59	2,424	12.3%	3,657	18.5%	6,081	30.8%
60 and above	223	1.1%	237	1.2%	460	2.3%
<b>Buramino Total</b>	<b>9,347</b>	<b>47.3%</b>	<b>10,427</b>	<b>52.7%</b>	<b>19,774</b>	<b>100.0%</b>

Figure 2.6 - Buramino Camp Demographic Breakdown



Age Group	Sex				Total	
	Male	( % )	Female	( % )	Total	( % )
0 - 4	84	12.4%	77	11.4%	161	23.9%
5 - 11	87	12.9%	98	14.5%	185	27.4%

12 - 17	43	6.4%	25	3.7%	68	10.1%
18 - 59	111	16.4%	128	19.0%	239	35.4%
60 and above	13	1.9%	9	1.3%	22	3.3%
<b>Transit Centre</b>	<b>338</b>	<b>50.1%</b>	<b>337</b>	<b>49.9%</b>	<b>675</b>	<b>100.0%</b>

Figure 2.7 - Dollo Ado Transit Center Demographic Breakdown

