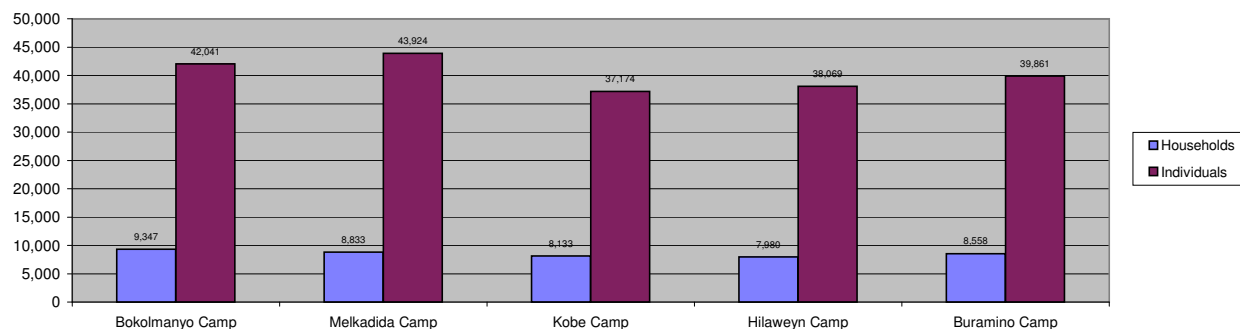


## Dollo Ado Population end of Month Statistical Report

*As of 30 April 2014*

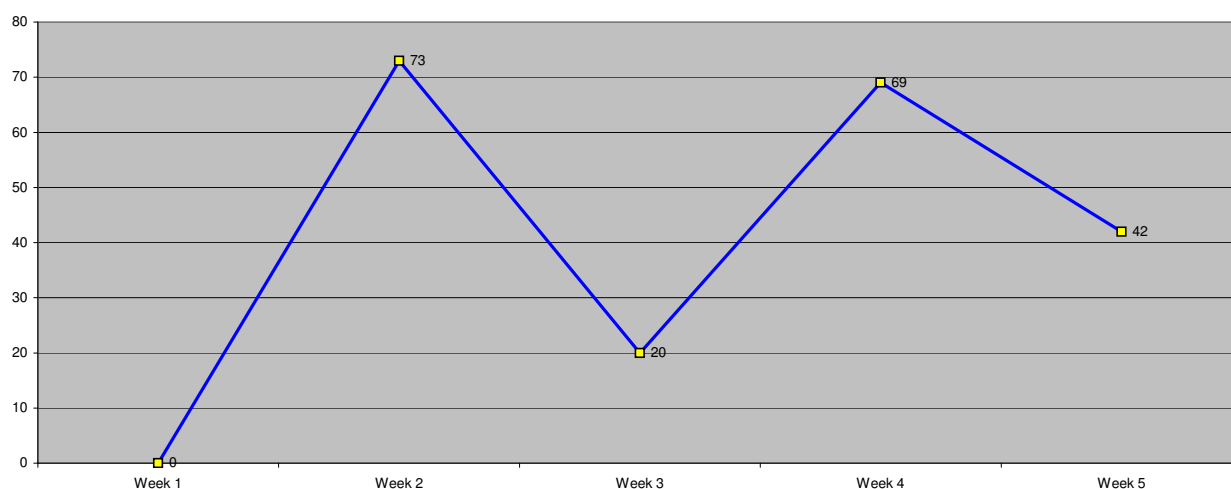
**Figure 1.1 - Total Refugee Population in Dollo Ado**



**Table 1.1 - Total Refugee Population in Dollo Ado**

Site/Camp	Current Total		As of end 2010		As of end 2011		As of end 2012		As of end 2013	
	Households	Individuals	Households	Individuals	Households	Individuals	Households	Individuals	Households	Individuals
Bokolmany Camp	9,347	42,041	3,988	14,988	9,624	38,501	9,878	40,423	9,400	41,670
Melkadida Camp	8,833	43,924	6,452	25,491	10,024	40,696	9,350	42,365	8,887	43,480
Kobe Camp	8,133	37,174	n/a	n/a	5946	26033	7,452	31,656	8,067	36,488
Hilaweyn Camp	7,980	38,069	n/a	n/a	6119	25747	7,191	30,960	8,012	37,305
Buramino Camp	8,558	39,861	n/a	n/a	911	4045	8,837	35,207	8,851	40,114
<b>Camp Sub-Total</b>	<b>42,851</b>	<b>201,069</b>	<b>10,440</b>	<b>40,479</b>	<b>31,713</b>	<b>130,977</b>	<b>42,708</b>	<b>180,611</b>	<b>43,217</b>	<b>199,057</b>
Dollo Ado Reception centre*	16	54	n/a	n/a	-	-	-	-	-	-
<b>Temporary Locations Sub-Total</b>	<b>16</b>	<b>54</b>	<b>n/a</b>	<b>n/a</b>	<b>-</b>	<b>-</b>	<b>-</b>	<b>-</b>	<b>-</b>	<b>-</b>
<b>GRAND TOTAL ALL LOCATIONS</b>	<b>42,867</b>	<b>201,123</b>	<b>10,440</b>	<b>40,479</b>	<b>31,713</b>	<b>130,977</b>	<b>42,708</b>	<b>180,611</b>	<b>43,217</b>	<b>199,057</b>

**Figure 1.2 - New Arrivals at Reception Centre by Week during the Current Month**



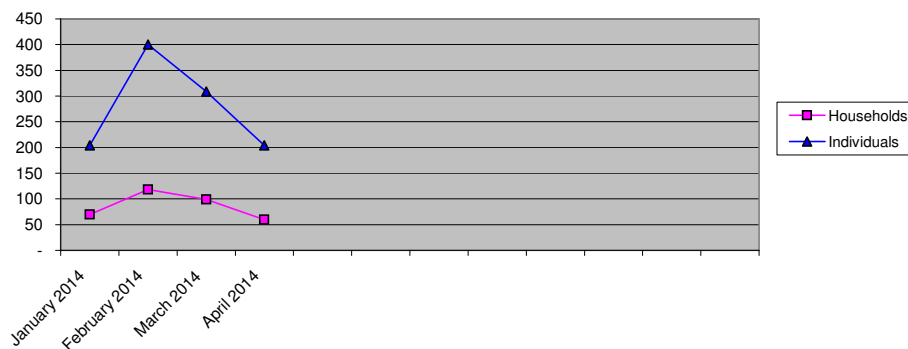
**Table 1.2 - Daily New Arrivals Registered by UNHCR at the Reception Centre**

Date	Newly Arrived Individuals	Pre-registered by UNHCR *
1-Apr-2014	0	0**
2-Apr-2014	0	0**
3-Apr-2014	0	0**
4-Apr-2014	0	0**
5-Apr-2014	0	0**
6-Apr-2014	0	0**
7-Apr-2014	0	0**
8-Apr-2014	34	34
9-Apr-2014	0	0**
10-Apr-2014	0	0**
11-Apr-2014	39	39
12-Apr-2014	0	0**
13-Apr-2014	0	0**
14-Apr-2014	0	0**
15-Apr-2014	6	6
16-Apr-2014	6	6
17-Apr-2014	8	8
18-Apr-2014	0	0**
19-Apr-2014	0	0**
20-Apr-2014	0	0**
21-Apr-2014	0	0**
22-Apr-2014	26	26
23-Apr-2014	4	4
24-Apr-2014	27	27
25-Apr-2014	12	12
26-Apr-2014	0	0**
27-Apr-2014	0	0**
28-Apr-2014	3	3
29-Apr-2014	10	10
30-Apr-2014	29	29
<b>TOTAL THIS MONTH</b>	<b>204</b>	<b>204</b>

\* Blanks indicate days when UNHCR was not register refugees.

The number of those received during these days is included in the figure of next receiving day.

**Figure 1.3 - Pre-Registration Trends in 2014 (Reception Centre/ UNHCR) \***



\* These are registration volumes by month, not cumulative figures.

**Table 1.3 - Pre-Registration Trends in 2014 (Reception Centre/ UNHCR)**

Month	Households	Individuals
January 2014	70	204
February 2014	118	400
March 2014	99	309
April 2014	60	204
<b>Total</b>	<b>347</b>	<b>1,117</b>

**Table 1.4 - Registration & Relocation Trends in Reception Centre for the month of April**

Stage of Registration & Relocation	Individuals
Total individuals fully registered so far this month	204
Total individuals relocated to camp so far this month	150
Total Individuals fully processed (hold ration card), but not yet relocated	54

## Camp population by Age and Sex breakdown

As of 30 April 2014

Table 2.1 - ALL CAMPS Demographic Breakdown\*

Age Group	Sex				Total	
	Male	(%)	Female	(%)	Total	(%)
0 - 4	17,125	8.5%	17,050	8.5%	34,175	17.0%
5 - 11	36,598	18.2%	35,985	17.9%	72,583	36.1%
12 - 17	16,120	8.0%	14,411	7.2%	30,531	15.2%
18 - 59	21,586	10.7%	37,551	18.7%	59,137	29.4%
60 and above	2,389	1.2%	2,254	1.1%	4,643	2.3%
<b>Total ALL CAMPS</b>	<b>93,818</b>	<b>46.7%</b>	<b>107,251</b>	<b>53.3%</b>	<b>201,069</b>	<b>100.0%</b>

\* These total figures apply only to camps, not to the Transit Centre and Reception Centre

Figure 2.1 - ALL CAMPS Demographic Breakdown\*

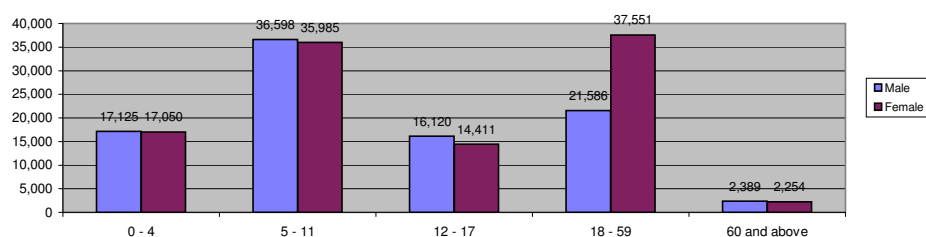


Table 2.2 - Melkadida Camp Demographic Breakdown

Age Group	Sex				Total	
	Male	(%)	Female	(%)	Total	(%)
0 - 4	3,420	7.8%	3,306	7.5%	6,726	15.3%
5 - 11	8,057	18.3%	7,835	17.8%	15,892	36.2%
12 - 17	3,897	8.9%	3,620	8.2%	7,517	17.1%
18 - 59	4,453	10.1%	8,402	19.1%	12,855	29.3%
60 and above	482	1.1%	452	1.0%	934	2.1%
<b>Melkadida Total</b>	<b>20,309</b>	<b>46.2%</b>	<b>23,615</b>	<b>53.8%</b>	<b>43,924</b>	<b>100.0%</b>

Figure 2.2 - Melkadida Camp Demographic Breakdown

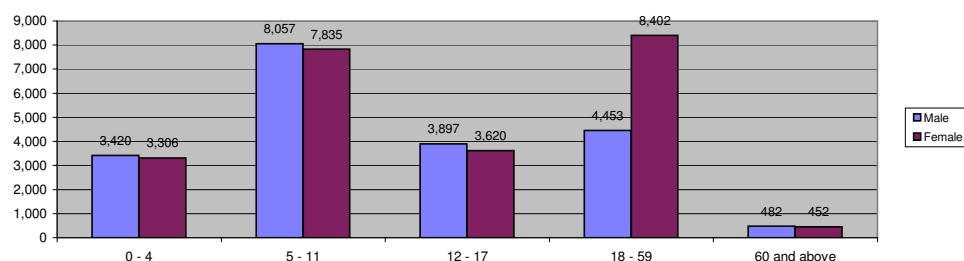


Table 2.3 - Bokolmany Camp Demographic Breakdown

Age Group	Sex				Total	
	Male	(%)	Female	(%)	Total	(%)
0 - 4	3,340	7.9%	3,341	7.9%	6,681	15.9%
5 - 11	7,328	17.4%	7,055	16.8%	14,383	34.2%
12 - 17	3,728	8.9%	3,243	7.7%	6,971	16.6%
18 - 59	4,873	11.6%	8,176	19.4%	13,049	31.0%
60 and above	495	1.2%	462	1.1%	957	2.3%
<b>Bokolmanyol Total</b>	<b>19,764</b>	<b>47.0%</b>	<b>22,277</b>	<b>53.0%</b>	<b>42,041</b>	<b>100.0%</b>

Figure 2.3 - Bokolmany Camp Demographic Breakdown

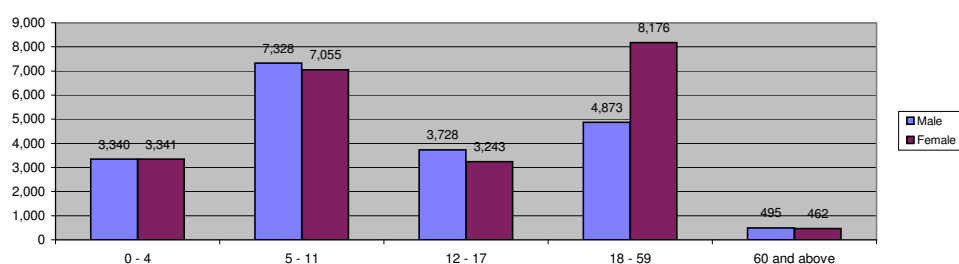


Table 2.4 - Kobe Camp Demographic Breakdown						
Age Group	Sex				Total	
	Male	( % )	Female	( % )	Total	( % )
0 - 4	3,314	8.9%	3,399	9.1%	6,713	18.1%
5 - 11	6,696	18.0%	6,506	17.5%	13,202	35.5%
12 - 17	2,782	7.5%	2,397	6.4%	5,179	13.9%
18 - 59	4,428	11.9%	6,575	17.7%	11,003	29.6%
60 and above	551	1.5%	526	1.4%	1,077	2.9%
<b>Kobe Total</b>	<b>17,771</b>	<b>47.8%</b>	<b>19,403</b>	<b>52.2%</b>	<b>37,174</b>	<b>100.0%</b>

Figure 2.4 - Kobe Camp Demographic Breakdown

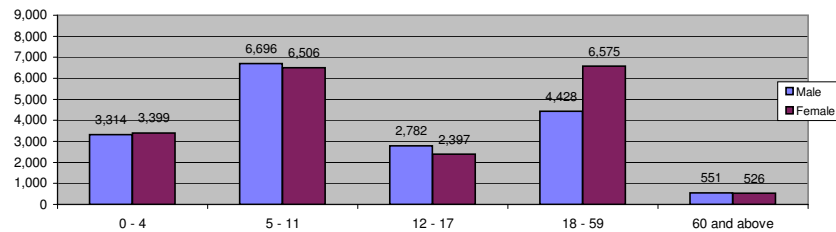


Table 2.5 - Hilaweyn Camp Demographic Breakdown						
Age Group	Sex				Total	
	Male	( % )	Female	( % )	Total	( % )
0 - 4	3,548	9.3%	3,454	9.1%	7,002	18.4%
5 - 11	6,918	18.2%	7,045	18.5%	13,963	36.7%
12 - 17	2,822	7.4%	2,469	6.5%	5,291	13.9%
18 - 59	4,017	10.6%	6,977	18.3%	10,994	28.9%
60 and above	437	1.1%	382	1.0%	819	2.2%
<b>Hilaweyn Total</b>	<b>17,742</b>	<b>46.6%</b>	<b>20,327</b>	<b>53.4%</b>	<b>38,069</b>	<b>100.0%</b>

Figure 2.5 - Hilaweyn Camp Demographic Breakdown

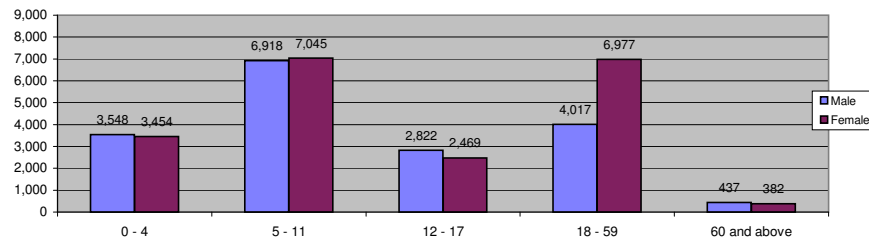
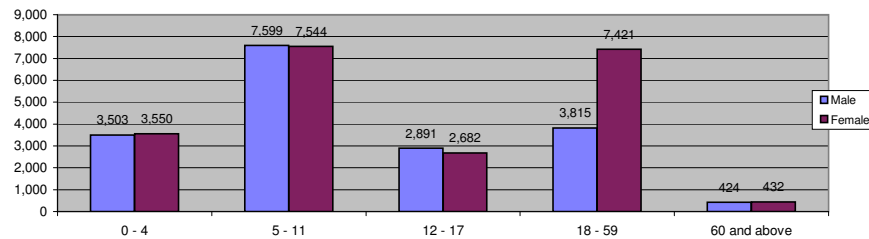


Table 2.6 - Buramino Camp Demographic Breakdown						
Age Group	Sex				Total	
	Male	( % )	Female	( % )	Total	( % )
0 - 4	3,503	8.8%	3,550	8.9%	7,053	17.7%
5 - 11	7,599	19.1%	7,544	18.9%	15,143	38.0%
12 - 17	2,891	7.3%	2,682	6.7%	5,573	14.0%
18 - 59	3,815	9.6%	7,421	18.6%	11,236	28.2%
60 and above	424	1.1%	432	1.1%	856	2.1%
<b>Buramino Total</b>	<b>18,232</b>	<b>45.7%</b>	<b>21,629</b>	<b>54.3%</b>	<b>39,861</b>	<b>100.0%</b>

Figure 2.6 - Buramino Camp Demographic Breakdown



## Camp Population change during the Month

As of 30 April 2014

Table 3.1 - Population Changes

		Increase						Decrease								
Camp	Population at the Beginning of Month	New Arrival / In Situ Reg *	Newborns	Transfers in from Other Camps **	Reactivated	Other	Total Increase	Deaths	Resettlement	Transfer out to Other Camps	Organized Repatriation	VRF Assisted Self Repatriation	Confirmed Spontaneous Repatriation	Other Inactivation	Total Decrease	Population at the End of Month
Bokolmanyu	41,925	2	76	4	11	27	120	2	-	-	-	-	-	2	4	42,041
Melkadida	43,901	7	111	35	4	-	157	-	-	134	-	-	-	-	134	43,924
Kobe	36,888	83	118	80	3	12	296	-	-	-	-	-	-	10	10	37,174
Hilaweyen	38,102	45	72	37	-	-	154	4	-	25	-	-	7	151	187	38,069
Buramino	39,867	23	73	24	-	-	120	1	-	62	-	-	-	63	126	39,861
<b>Total</b>	<b>200,683</b>	<b>160</b>	<b>450</b>	<b>180</b>	<b>18</b>	<b>39</b>	<b>847</b>	<b>7</b>	<b>-</b>	<b>221</b>	<b>-</b>	<b>-</b>	<b>7</b>	<b>226</b>	<b>461</b>	<b>201,069</b>

\* All new arrivals are registered at the Reception Centre after which they are relocated to the camps

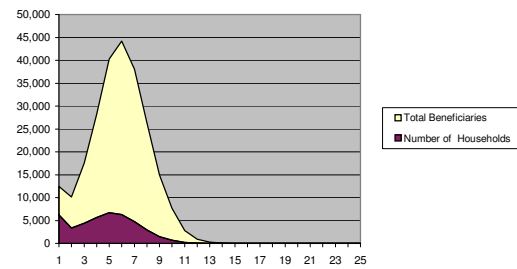
\*\* Mainly due to family re-unification

## Camp Population Composition

As of 30 April 2014

Family Size	Number of Households	Total Beneficiaries
1	6,210	6,210
2	3,378	6,756
3	4,385	13,155
4	5,648	22,592
5	6,708	33,540
6	6,314	37,884
7	4,752	33,264
8	2,925	23,400
9	1,498	13,482
10	701	7,010
11	236	2,596
12	72	864
13	20	260
14	4	56
15		
16		
17		
18		
19		
20		
21		
22		
23		
24		
25		
<b>Total</b>	<b>42,851</b>	<b>201,069</b>

Figure 4.1- ALL CAMPS Household Size



Family Size	Number of Households	Total Beneficiaries
1	965	965
2	644	1,288
3	917	2,751
4	1,162	4,648
5	1,395	6,975
6	1,383	8,298
7	1,054	7,378
8	639	5,112
9	382	3,438
10	190	1,900
11	65	715
12	26	312
13	10	130
14	1	14
15		
16		
17		
18		
19		
20		
21		
22		
23		
24		
25		
<b>Total</b>	<b>8,833</b>	<b>43,924</b>

Figure 4.2- Melkadida Camp Household Size

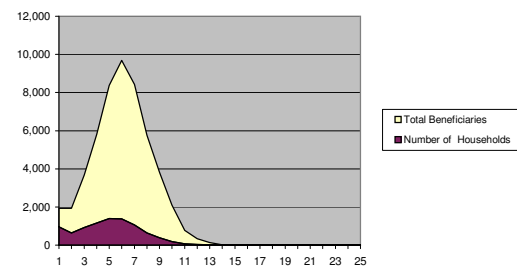


Table 4.3 - Bokolmanyo Camp Household Size		
Family Size	Number of Households	Total Beneficiaries
1	1,648	1,648
2	908	1,816
3	958	2,874
4	1,173	4,692
5	1,289	6,445
6	1,215	7,290
7	963	6,741
8	605	4,840
9	324	2,916
10	162	1,620
11	76	836
12	17	204
13	7	91
14	2	28
15		
16		
17		
18		
19		
20		
21		
22		
23		
24		
25		
Total	9,347	42,041

Figure 4.3- Bokolmanyo Camp Household Size

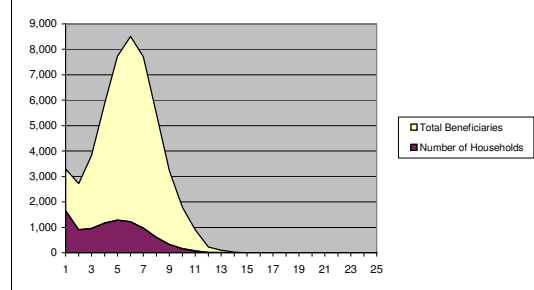
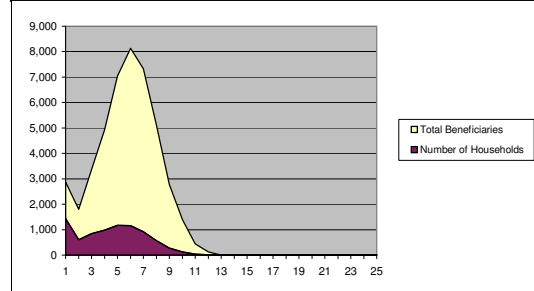


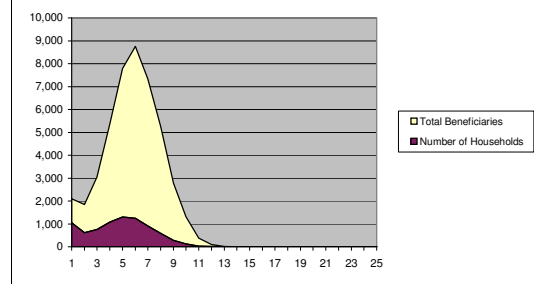
Table 4.4 - Kobe Camp Household Size		
Family Size	Number of Households	Total Beneficiaries
1	1,438	1,438
2	602	1,204
3	839	2,517
4	986	3,944
5	1,172	5,860
6	1,162	6,972
7	916	6,412
8	566	4,528
9	278	2,502
10	127	1,270
11	37	407
12	10	120
13		
14		
15		
16		
17		
18		
19		
20		
21		
22		
23		
24		
25		
Total	8,133	37,174

Figure 4.4- Kobe Camp Household Size



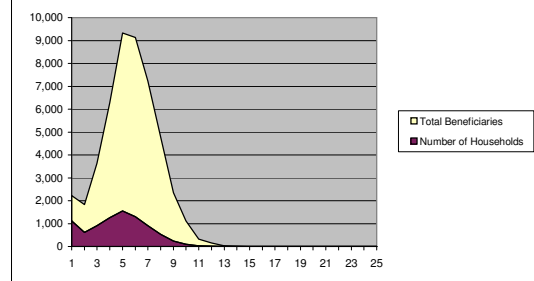
Family Size	Number of Households	Total Beneficiaries
1	1,047	1,047
2	614	1,228
3	761	2,283
4	1,072	4,288
5	1,298	6,490
6	1,250	7,500
7	916	6,412
8	584	4,672
9	279	2,511
10	120	1,200
11	31	341
12	7	84
13	1	13
14		
15		
16		
17		
18		
19		
20		
21		
22		
23		
24		
25		
Total	7,980	38,069

Figure 4.5- Hilaweyn Camp Household Size



Family Size	Number of Households	Total Beneficiaries
1	1,112	1,112
2	610	1,220
3	910	2,730
4	1,255	5,020
5	1,554	7,770
6	1,304	7,824
7	903	6,321
8	531	4,248
9	235	2,115
10	102	1,020
11	27	297
12	12	144
13	2	26
14	1	14
15		
16		
17		
18		
19		
20		
21		
22		
23		
24		
25		
Total	8,558	39,861

Figure 4.6- Buramino Camp Household Size





## Specific Needs Among Camp Populations

As of 30 April 2014

Table 5.1- ALL CAMPS Specific Needs

Specific Need Type	Sex		Total
	Male	Female	
Child/adolescent at risk*	177	556	733
Woman at risk**		12,809	12,809
Serious medical Condition	1,098	1,640	2,738
Legal Protection needs	22	526	548
Single Parent	882	16,734	17,616
Persons with disabilities	1,597	1,680	3,277
Unaccompanied minor/Separated child	3,577	3,904	7,481
Older person at risk	1,265	1,925	3,190
<b>Total ALL CAMPS</b>	<b>8,618</b>	<b>39,774</b>	<b>48,392</b>

\* Excludes data for Children at risk of not attending school - data pending verification

\*\* Excludes data for lactating mothers

Figure 5.1 - ALL CAMPS Specific Needs

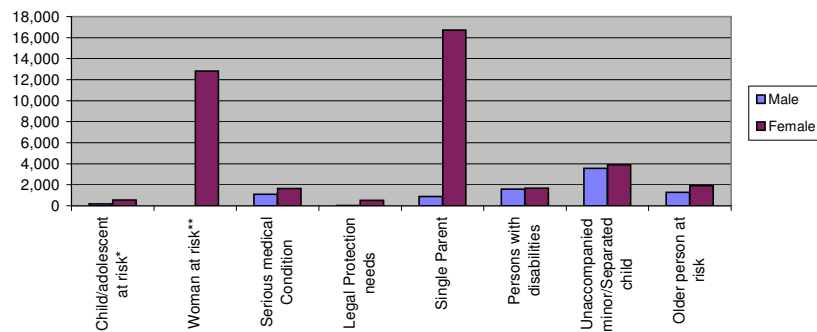


Table 5.2- Melkadida Camp Specific Needs

Specific Need Type	Sex		Total
	Male	Female	
Child/adolescent at risk*	68	177	245
Woman at risk**		4,378	4,378
Serious medical Condition	278	475	753
Legal Protection needs	10	347	357
Single Parent	216	4,216	4,432
Persons with disabilities	419	504	923
Unaccompanied minor/Separated child	1,085	1,206	2,291
Older person at risk	290	402	692
<b>Melkadida Total</b>	<b>2,366</b>	<b>11,705</b>	<b>14,071</b>

Figure 5.2 - Melkadida Camp Specific Needs

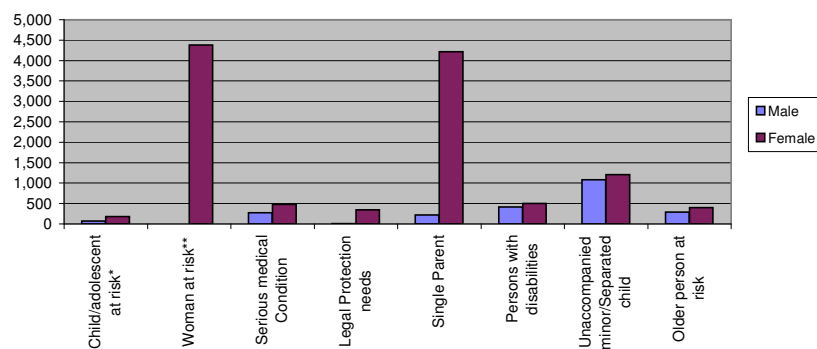


Table 5.3- Bokolmany Camp Specific Needs			
Specific Need Type	Sex		Total
	Male	Female	
Child/adolescent at risk*	53	136	189
Woman at risk**		4,152	4,152
Serious medical Condition	280	507	787
Legal Protection needs	10	124	134
Single Parent	201	3,734	3,935
Persons with disabilities	585	510	1,095
Unaccompanied minor/Separated child	986	1,068	2,054
Older person at risk	306	414	720
<b>Bokomanyol Total</b>	<b>2,421</b>	<b>10,645</b>	<b>13,066</b>

Figure 5.3 - Bokolmany Camp Specific Needs

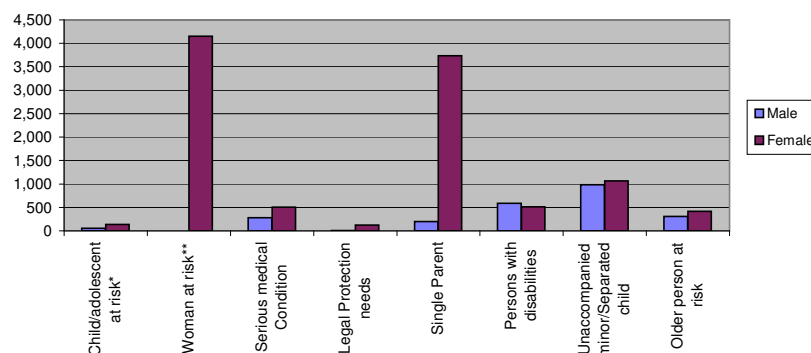
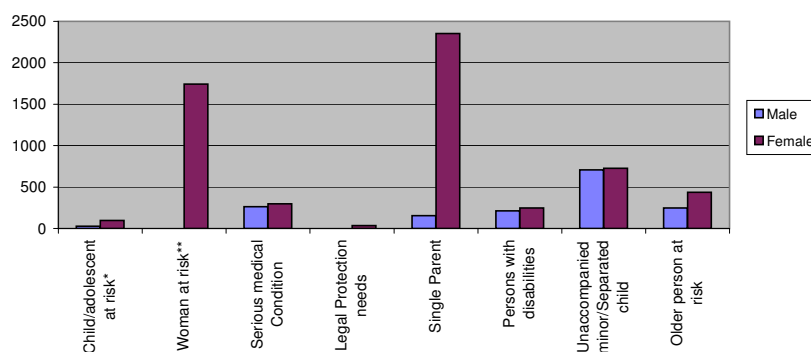


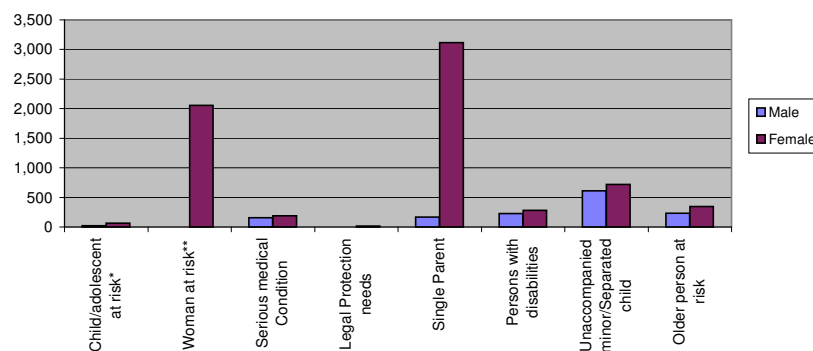
Table 5.4- Kobe Camp Specific Needs			
Specific Need Type	Sex		Total
	Male	Female	
Child/adolescent at risk*	28	98	126
Woman at risk**		1,741	1,741
Serious medical Condition	263	296	559
Legal Protection needs	1	35	36
Single Parent	156	2,355	2,511
Persons with disabilities	213	247	460
Unaccompanied minor/Separated child	707	726	1,433
Older person at risk	247	438	685
<b>Kobe Total</b>	<b>1,615</b>	<b>5,936</b>	<b>7,551</b>

Figure 5.5 - Kobe Camp Specific Needs



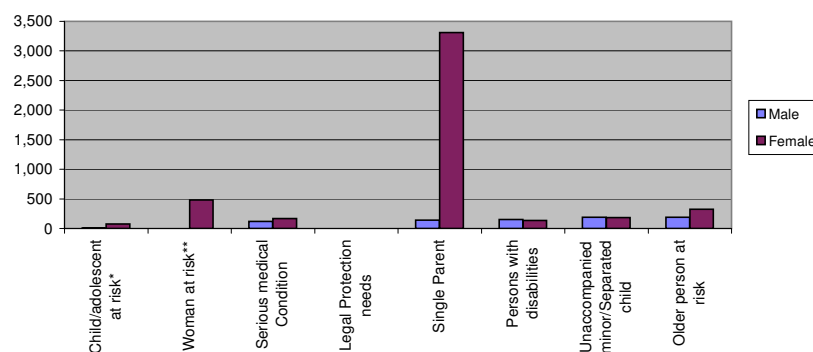
Specific Need Type	Sex		Total
	Male	Female	
Child/adolescent at risk*	24	67	91
Woman at risk**		2,058	2,058
Serious medical Condition	158	192	350
Legal Protection needs	1	18	19
Single Parent	169	3,117	3,286
Persons with disabilities	228	283	511
Unaccompanied minor/Separated child	611	720	1,331
Older person at risk	232	345	577
<b>Hilaweyn Total</b>	<b>1,423</b>	<b>6,800</b>	<b>8,223</b>

Figure 5.6 - Hilaweyn Camp Population Increase



Specific Need Type	Sex		Total
	Male	Female	
Child/adolescent at risk*	4	78	82
Woman at risk**		480	480
Serious medical Condition	119	170	289
Legal Protection needs		2	2
Single Parent	140	3,312	3,452
Persons with disabilities	152	136	288
Unaccompanied minor/Separated child	188	184	372
Older person at risk	190	326	516
<b>Buramino Total</b>	<b>793</b>	<b>4,688</b>	<b>5,481</b>

Figure 5.7 - Buramino Camp Population Increase



## Places of Origin

As of 30 April 2014

Table 7.1- ALL CAMPS Places of Origin

Area of Origin	Sex		Total
	Male	Female	
Gedo	47,886	58,796	106,682
Badadir	2,823	3,379	6,202
Bay	28,427	28,269	56,696
Bakol	10,574	12,291	22,865
Lower Shabelle	402	447	849
Lower Juba	289	307	596
Galgadud	84	76	160
Middle Shabelle	80	75	155
Hiran	379	404	783
Other	2,874	3,207	6,081
<b>ALL CAMPS Total</b>	<b>93,818</b>	<b>107,251</b>	<b>201,069</b>

Figure 7.1 - ALL CAMPS Places of Origin

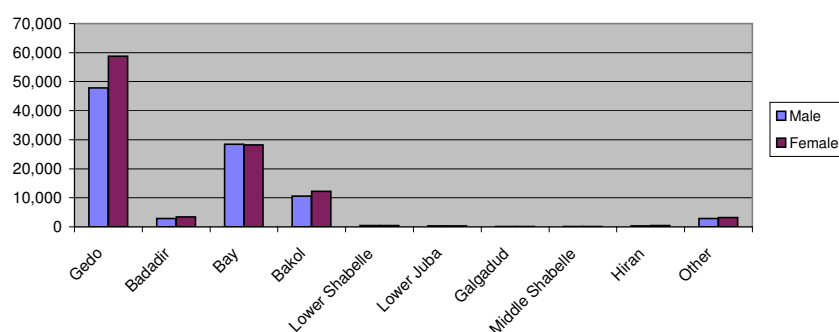


Table 7.2- Melkadida Camp Places of Origin

Area of Origin	Sex		Total
	Male	Female	
Gedo	12,898	15,741	28,639
Badadir	650	823	1,473
Bay	4,344	4,247	8,591
Bakol	1,577	1,903	3,480
Lower Shabelle	89	97	186
Lower Juba	56	52	108
Galgadud	18	21	39
Middle Shabelle	23	20	43
Hiran	85	84	169
Other	569	627	1,196
<b>Melkadida Total</b>	<b>20,309</b>	<b>23,615</b>	<b>43,924</b>

Figure 7.2 - Melkadida Camp Places of Origin

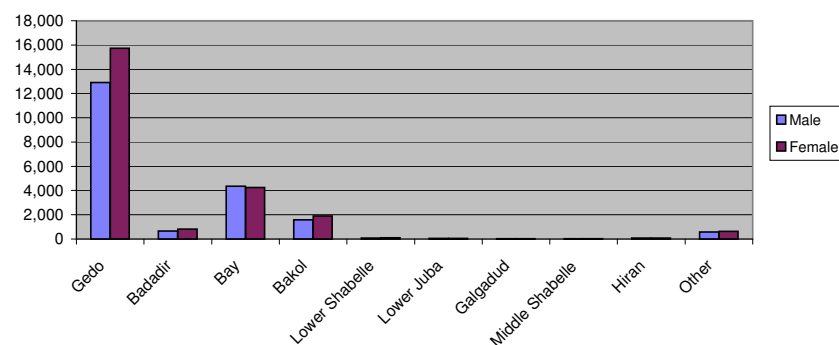


Table 7.3- Bokolmany Camp Places of Origin			
Area of Origin	Sex		Total
	Male	Female	
Gedo	10,738	13,073	23,811
Badadir	1,521	1,722	3,243
Bay	4,919	4,782	9,701
Bakol	1,380	1,461	2,841
Lower Shabelle	113	120	233
Lower Juba	137	129	266
Galgadud	37	27	64
Middle Shabelle	20	15	35
Hiran	89	98	187
Other	810	850	1,660
<b>Bokomanyol Total</b>	<b>19,764</b>	<b>22,277</b>	<b>42,041</b>

Figure 7.3 - Bokolmany Camp Places of Origin

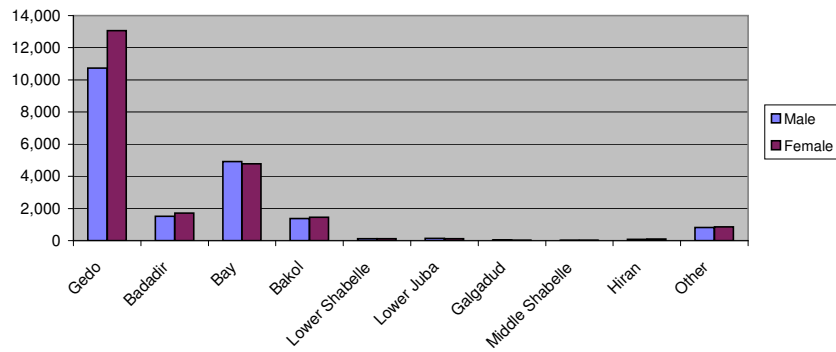


Table 7.4- Kobe Camp Places of Origin			
Area of Origin	Sex		Total
	Male	Female	
Gedo	5,077	6,221	11,298
Badadir	70	88	158
Bay	9,688	9,845	19,533
Bakol	2,246	2,512	4,758
Lower Shabelle	24	15	39
Lower Juba	26	43	69
Galgadud	7	2	9
Middle Shabelle	15	20	35
Hiran	18	20	38
Other	600	637	1,237
<b>Kobe Total</b>	<b>17,771</b>	<b>19,403</b>	<b>37,174</b>

Figure 7.5 - Kobe Camp Places of Origin

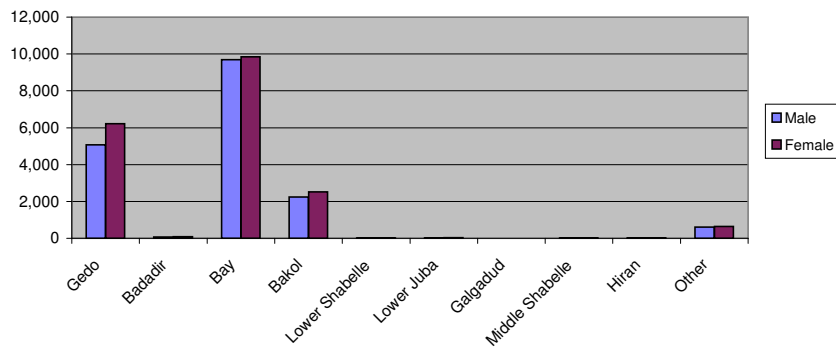


Table 7.6- Hilaweyn Camp Places of Origin			
Area of Origin	Sex		Total
	Male	Female	
Gedo	8,204	10,340	18,544
Badadir	185	253	438
Bay	5,729	5,686	11,415
Bakol	2,975	3,261	6,236
Lower Shabelle	39	29	68
Lower Juba	14	27	41
Galgadud	5	15	20
Middle Shabelle	1		1
Hiran	44	57	101
Other	546	659	1,205
<b>Hilaweyn Total</b>	<b>17,742</b>	<b>20,327</b>	<b>38,069</b>

Figure 7.6 - Hilaweyn Camp Places of Origin

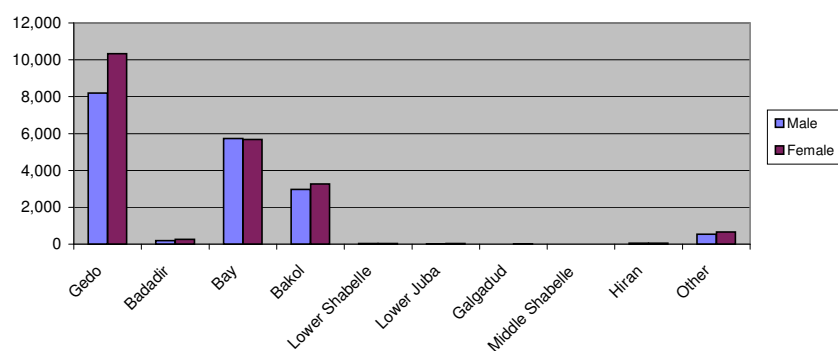
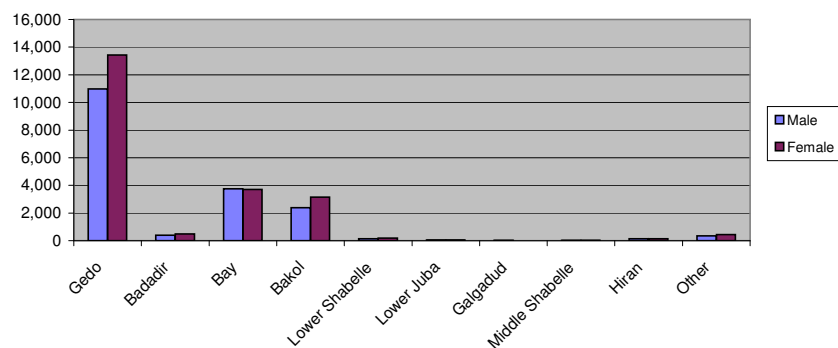


Table 7.7- Buramino Camp Places of Origin			
Area of Origin	Sex		Total
	Male	Female	
Gedo	10,969	13,421	24,390
Badadir	397	493	890
Bay	3,747	3,709	7,456
Bakol	2,396	3,154	5,550
Lower Shabelle	137	186	323
Lower Juba	56	56	112
Galgadud	17	11	28
Middle Shabelle	21	20	41
Hiran	143	145	288
Other	349	434	783
<b>Buramino Total</b>	<b>18,232</b>	<b>21,629</b>	<b>39,861</b>

Figure 7.7 - Buramino Camp Places of Origin



## Ethnic Breakdown

As of 30 April 2014

Table 6.1- ALL CAMPS Ethnic Breakdown

Ethnicity	Sex		Total
	Male	Female	
Rahan-weyn	55,344	60,063	115,407
Marehan	19,152	24,250	43,402
Hawiye	8,061	9,669	17,730
Dir	2,540	3,096	5,636
Bantu	915	1,117	2,032
Ashraf	1,283	1,340	2,623
Shekal	1,191	1,426	2,617
Darod	1,448	1,613	3,061
Minorities/Others	3,884	4,677	8,561
<b>ALL CAMPS Total</b>	<b>93,818</b>	<b>107,251</b>	<b>201,069</b>

Figure 6.1 - ALL CAMPS Ethnic Breakdown

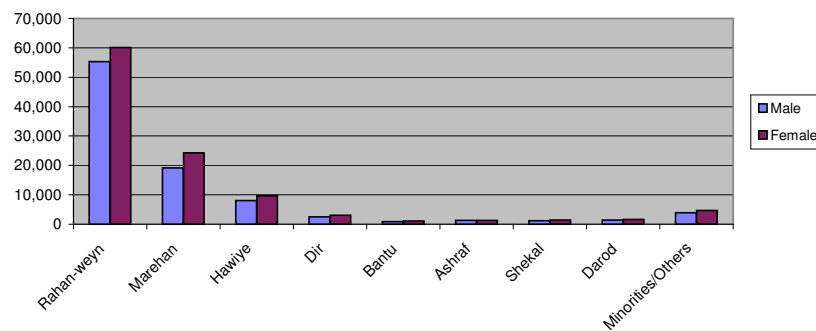


Table 6.2- Melkadida Camp Ethnic Breakdown

Ethnicity	Sex		Total
	Male	Female	
Rahan-weyn	11,888	12,893	24,781
Marehan	5,403	7,075	12,478
Hawiye	725	871	1,596
Dir	508	664	1,172
Bantu	286	319	605
Ashraf	315	311	626
Shekal	87	126	213
Darod	159	198	357
Minorities/Others	938	1,158	2,096
<b>Melkadida Total</b>	<b>20,309</b>	<b>23,615</b>	<b>43,924</b>

Figure 6.2 - Melkadida Camp Ethnic Breakdown

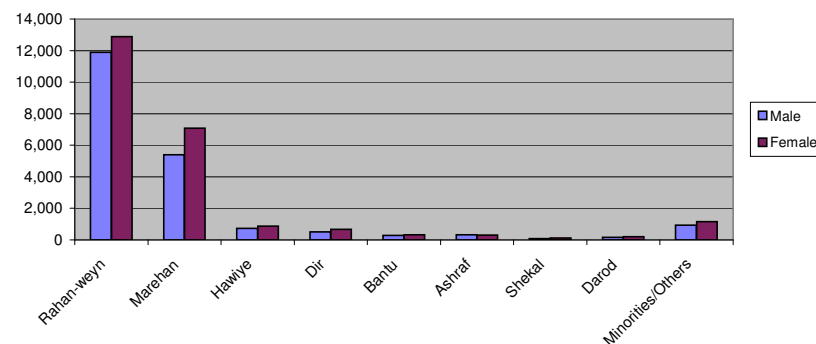


Table 6.3- Bokolmanyo Camp Ethnic Breakdown			
Ethnicity	Sex		Total
	Male	Female	
Rahan-weyn	10,101	11,019	21,120
Marehan	4,452	5,326	9,778
Hawiye	1,444	1,738	3,182
Dir	483	559	1,042
Bantu	257	323	580
Ashraf	459	491	950
Shekal	343	381	724
Darod	491	475	966
Minorities/Others	1,734	1,965	3,699
<b>Bokomanyol Total</b>	<b>19,764</b>	<b>22,277</b>	<b>42,041</b>

Figure 6.3 - Bokolmanyo Camp Ethnic Breakdown

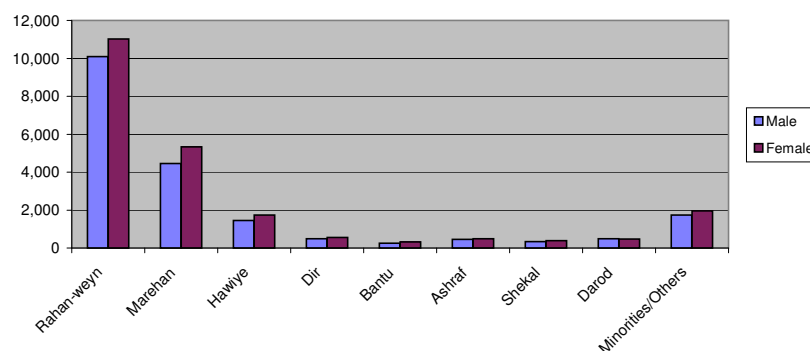


Table 6.4- Kobe Camp Ethnic Breakdown			
Ethnicity	Sex		Total
	Male	Female	
Rahan-weyn	13,723	14,392	28,115
Marehan	2,063	2,574	4,637
Hawiye	800	969	1,769
Dir	140	186	326
Bantu	78	96	174
Ashraf	63	83	146
Shekal	151	213	364
Darod	430	502	932
Minorities/Others	323	388	711
<b>Kobe Total</b>	<b>17,771</b>	<b>19,403</b>	<b>37,174</b>

Figure 6.5 - Kobe Camp Ethnic Breakdown

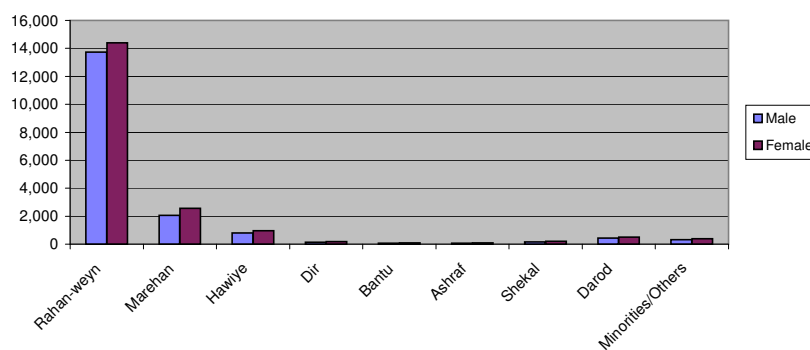




Table 6.6- Hilaweyn Camp Ethnic Breakdown			
Ethnicity	Sex		Total
	Male	Female	
Rahan-weyn	11,129	11,906	23,035
Marehan	3,642	4,672	8,314
Hawiye	1,572	2,036	3,608
Dir	422	503	925
Bantu	112	156	268
Ashraf	161	177	338
Shekal	185	223	408
Darod	198	218	416
Minorities/Others	321	436	757
<b>Hilaweyn Total</b>	<b>17,742</b>	<b>20,327</b>	<b>38,069</b>

Figure 6.6 - Hilaweyn Camp Ethnic Breakdown

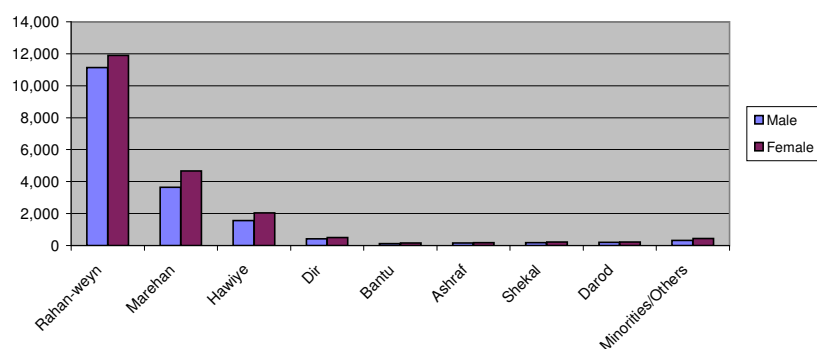


Table 6.7- Buramino Camp Ethnic Breakdown			
Ethnicity	Sex		Total
	Male	Female	
Rahan-weyn	8,503	9,853	18,356
Marehan	3,592	4,603	8,195
Hawiye	3,520	4,055	7,575
Dir	987	1,184	2,171
Bantu	182	223	405
Ashraf	285	278	563
Shekal	425	483	908
Darod	170	220	390
Minorities/Others	568	730	1,298
<b>Buramino Total</b>	<b>18,232</b>	<b>21,629</b>	<b>39,861</b>

Figure 6.7 - Buramino Camp Ethnic Breakdown

