

Dollo Ado Population end of Month Statistical Report

As of 30 Jun 2014

Figure 1.1 - Total Refugee Population in Dollo Ado

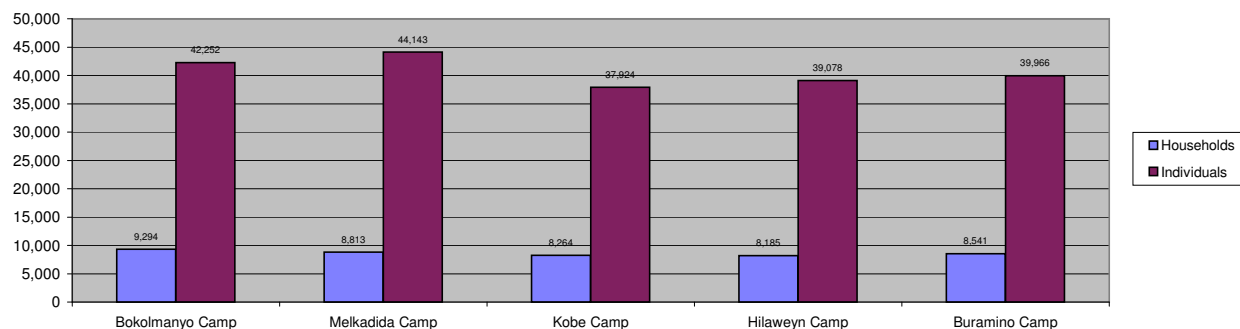


Table 1.1 - Total Refugee Population in Dollo Ado

Site/Camp	Current Total		As of end 2010		As of end 2011		As of end 2012		As of end 2013	
	Households	Individuals	Households	Individuals	Households	Individuals	Households	Individuals	Households	Individuals
Bokolmany Camp	9,294	42,252	3,988	14,988	9,624	38,501	9,878	40,423	9,400	41,670
Melkadida Camp	8,813	44,143	6,452	25,491	10,024	40,696	9,350	42,365	8,887	43,480
Kobe Camp	8,264	37,924	n/a	n/a	5946	26033	7,452	31,656	8,067	36,488
Hilaweyn Camp	8,185	39,078	n/a	n/a	6119	25747	7,191	30,960	8,012	37,305
Buramino Camp	8,541	39,966	n/a	n/a	911	4045	8,837	35,207	8,851	40,114
Camp Sub-Total	43,097	203,363	10,440	40,479	31,713	130,977	42,708	180,611	43,217	199,057
Dollo Ado Reception centre*	8	28	n/a	n/a	-	-	-	-	-	-
Temporary Locations Sub-Total	8	28	n/a	n/a	-	-	-	-	-	-
GRAND TOTAL ALL LOCATIONS	43,105	203,391	10,440	40,479	31,713	130,977	42,708	180,611	43,217	199,057

Figure 1.2 - New Arrivals at Reception Centre by Week during the Current Month

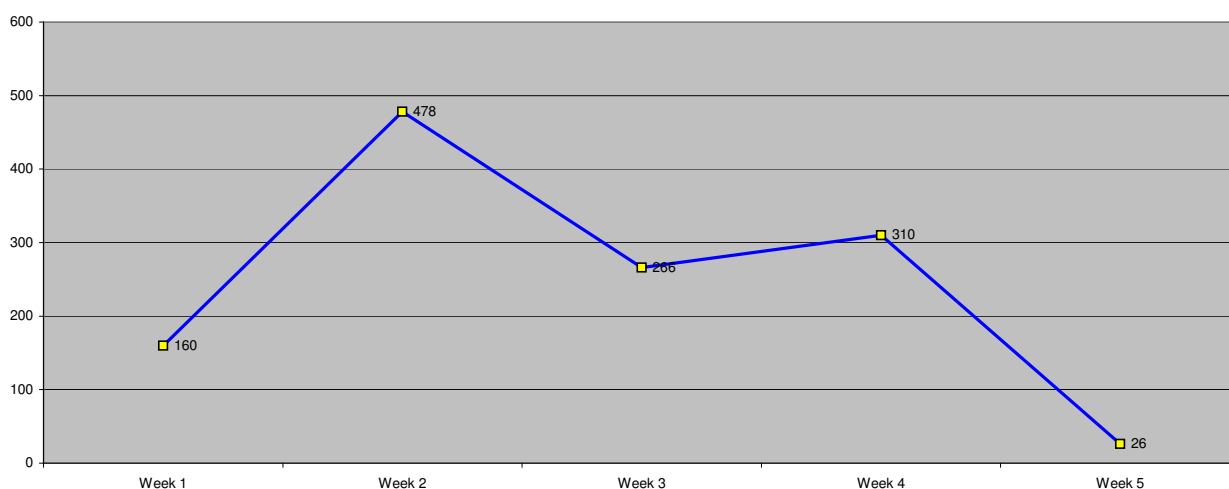


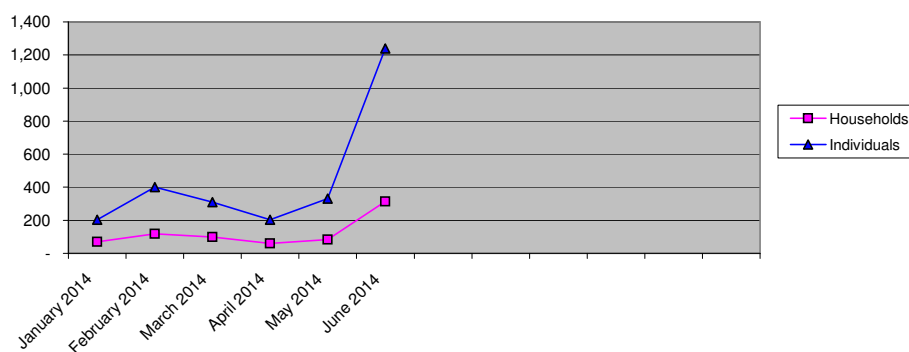
Table 1.2 - Daily New Arrivals Registered by UNHCR at the Reception Centre

Date	Newly Arrived Individuals	Pre-registered by UNHCR *
1-Jun-2014	0	0**
2-Jun-2014	108	108
3-Jun-2014	18	18
4-Jun-2014	10	10
5-Jun-2014	24	24
6-Jun-2014	0	0**
7-Jun-2014	0	0**
8-Jun-2014	0	0**
9-Jun-2014	160	160
10-Jun-2014	88	88
11-Jun-2014	112	112
12-Jun-2014	68	68
13-Jun-2014	50	50
14-Jun-2014	0	0**
15-Jun-2014	0	0**
16-Jun-2014	53	53
17-Jun-2014	77	77
18-Jun-2014	84	84
19-Jun-2014	36	36
20-Jun-2014	16	16
21-Jun-2014	0	0**
22-Jun-2014	0	0**
23-Jun-2014	72	72
24-Jun-2014	60	60
25-Jun-2014	40	40
26-Jun-2014	76	76
27-Jun-2014	62	62
28-Jun-2014	0	0**
29-Jun-2014	0	0**
30-Jun-2014	26	26
TOTAL THIS MONTH	1,240	1,240

* Blanks indicate days when UNHCR was not register refugees.

The number of those received during these days is included in the figure of next receiving day.

Figure 1.3 - Pre-Registration Trends in 2014 (Reception Centre/ UNHCR) *



* These are registration volumes by month, not cumulative figures.

Table 1.3 - Pre-Registration Trends in 2014 (Reception Centre/ UNHCR)

Month	Households	Individuals
January 2014	70	204
February 2014	118	400
March 2014	99	309
April 2014	60	204
May 2014	84	332
June 2014	313	1,240
Total	744	2,689

Table 1.4 - Registration & Relocation Trends in Reception Centre for the month of April

Stage of Registration & Relocation	Individuals
Total individuals fully registered so far this month	1,240
Total individuals relocated to camp so far this month	1,281
Total Individuals fully processed (hold ration card), but not yet relocated	28

Camp population by Age and Sex breakdown

As of 30 Jun 2014

Table 2.1 - ALL CAMPS Demographic Breakdown*

Age Group	Sex				Total	
	Male	(%)	Female	(%)	Total	(%)
0 - 4	17,713	8.7%	17,608	8.7%	35,321	17.4%
5 - 11	36,900	18.1%	36,255	17.8%	73,155	36.0%
12 - 17	16,177	8.0%	14,523	7.1%	30,700	15.1%
18 - 59	21,696	10.7%	37,821	18.6%	59,517	29.3%
60 and above	2,401	1.2%	2,269	1.1%	4,670	2.3%
Total ALL CAMPS	94,887	46.7%	108,476	53.3%	203,363	100.0%

* These total figures apply only to camps, not to the Reception Centre

Figure 2.1 - ALL CAMPS Demographic Breakdown*

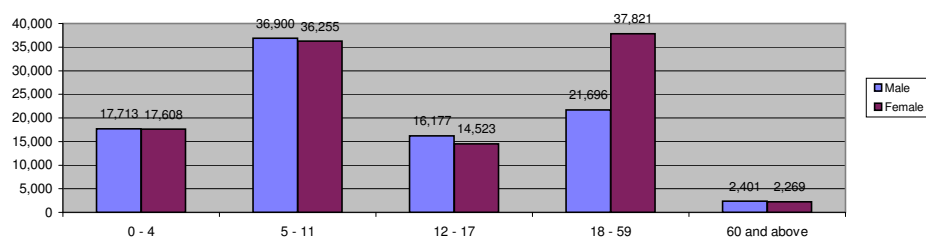


Table 2.2 - Melkadida Camp Demographic Breakdown

Age Group	Sex				Total	
	Male	(%)	Female	(%)	Total	(%)
0 - 4	3,536	8.0%	3,421	7.7%	6,957	15.8%
5 - 11	8,050	18.2%	7,826	17.7%	15,876	36.0%
12 - 17	3,898	8.8%	3,618	8.2%	7,516	17.0%
18 - 59	4,459	10.1%	8,400	19.0%	12,859	29.1%
60 and above	482	1.1%	453	1.0%	935	2.1%
Melkadida Total	20,425	46.3%	23,718	53.7%	44,143	100.0%

Figure 2.2 - Melkadida Camp Demographic Breakdown

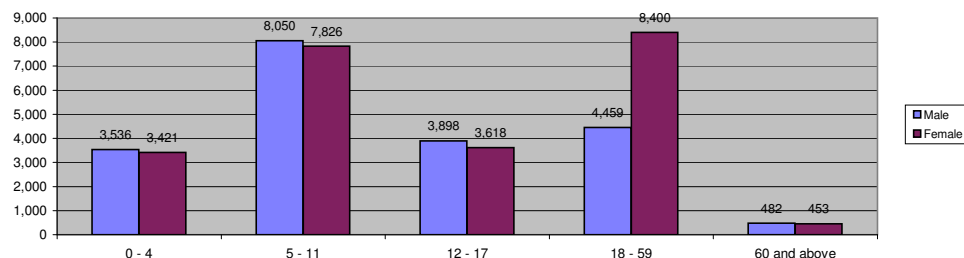
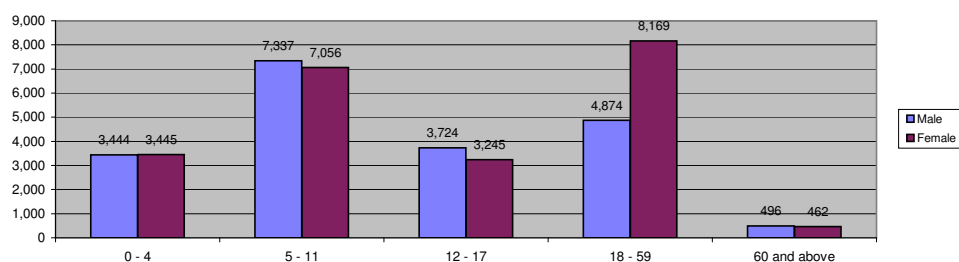


Table 2.3 - Bokolmany Camp Demographic Breakdown

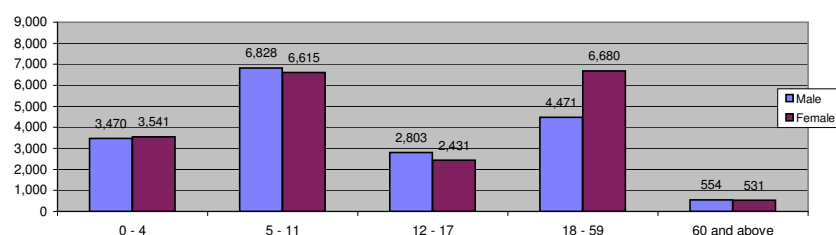
Age Group	Sex				Total	
	Male	(%)	Female	(%)	Total	(%)
0 - 4	3,444	8.2%	3,445	8.2%	6,889	16.3%
5 - 11	7,337	17.4%	7,056	16.7%	14,393	34.1%
12 - 17	3,724	8.8%	3,245	7.7%	6,969	16.5%
18 - 59	4,874	11.5%	8,169	19.3%	13,043	30.9%
60 and above	496	1.2%	462	1.1%	958	2.3%
Bokolmanyol Total	19,875	47.0%	22,377	53.0%	42,252	100.0%

Figure 2.3 - Bokolmany Camp Demographic Breakdown



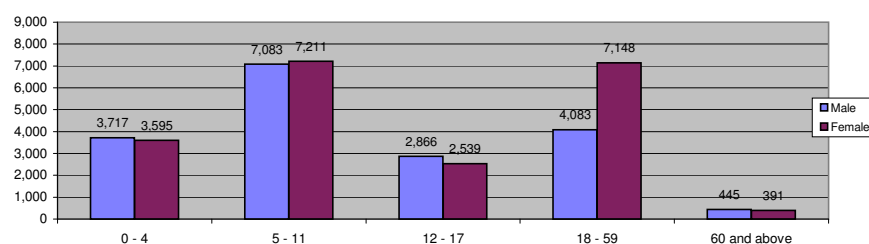
Age Group	Sex				Total	
	Male	(%)	Female	(%)	Total	(%)
0 - 4	3,470	9.1%	3,541	9.3%	7,011	18.5%
5 - 11	6,828	18.0%	6,615	17.4%	13,443	35.4%
12 - 17	2,803	7.4%	2,431	6.4%	5,234	13.8%
18 - 59	4,471	11.8%	6,680	17.6%	11,151	29.4%
60 and above	554	1.5%	531	1.4%	1,085	2.9%
Kobe Total	18,126	47.8%	19,798	52.2%	37,924	100.0%

Figure 2.4 - Kobe Camp Demographic Breakdown



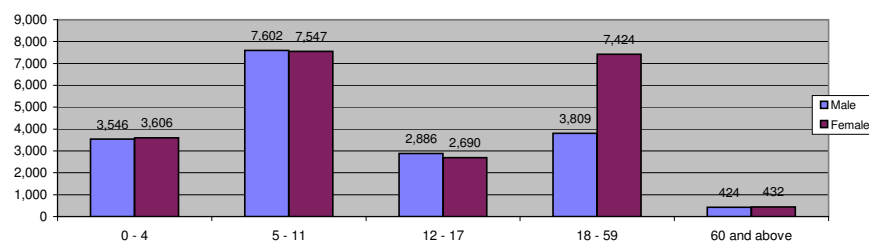
Age Group	Sex				Total	
	Male	(%)	Female	(%)	Total	(%)
0 - 4	3,717	9.5%	3,595	9.2%	7,312	18.7%
5 - 11	7,083	18.1%	7,211	18.5%	14,294	36.6%
12 - 17	2,866	7.3%	2,539	6.5%	5,405	13.8%
18 - 59	4,083	10.4%	7,148	18.3%	11,231	28.7%
60 and above	445	1.1%	391	1.0%	836	2.1%
Hilaweyn Total	18,194	46.6%	20,884	53.4%	39,078	100.0%

Figure 2.5 - Hilaweyn Camp Demographic Breakdown



Age Group	Sex				Total	
	Male	(%)	Female	(%)	Total	(%)
0 - 4	3,546	8.9%	3,606	9.0%	7,152	17.9%
5 - 11	7,602	19.0%	7,547	18.9%	15,149	37.9%
12 - 17	2,886	7.2%	2,690	6.7%	5,576	14.0%
18 - 59	3,809	9.5%	7,424	18.6%	11,233	28.1%
60 and above	424	1.1%	432	1.1%	856	2.1%
Buramino Total	18,267	45.7%	21,699	54.3%	39,966	100.0%

Figure 2.6 - Buramino Camp Demographic Breakdown



Camp Population change during the Month

As of 30 Jun 2014

Table 3.1 - Population Changes

		Increase						Decrease								
Camp	Population at the Beginning of Month	New Arrival / In Situ Reg *	Newborns	Transfers in from Other Camps **	Reactivated	Other	Total Increase	Deaths	Resettlement	Transfer out to Other Camps	Organized Repatriation	VRF Assisted Self Repatriation	Confirmed Spontaneous Repatriation	Other Inactivation	Total Decrease	Population at the End of Month
Bokolmanyu	42,154	7	117	17	-	-	141	-	-	39	-	-	-	4	43	42,252
Melkadida	44,005	34	130	43	-	-	207	-	-	69	-	-	-	-	69	44,143
Kobe	37,269	622	90	9	-	-	721	-	-	66	-	-	-	-	66	37,924
Hilaweyen	38,415	559	10	118	-	-	687	-	-	24	-	-	-	-	24	39,078
Buramino	39,905	59	48	15	-	-	122	-	-	61	-	-	-	-	61	39,966
Total	201,748	1,281	395	202	-	-	1,878	-	-	259	-	-	-	4	263	203,363

* All new arrivals are registered at the Reception Centre after which they are relocated to the camps

** Mainly due to family re-unification

Camp Population Composition

As of 30 Jun 2014

Table 4.1- ALL CAMPS Household Size

Family Size	Number of Households	Total Beneficiaries
1	6,196	6,196
2	3,361	6,722
3	4,346	13,038
4	5,684	22,736
5	6,722	33,610
6	6,345	38,070
7	4,812	33,684
8	2,974	23,792
9	1,554	13,986
10	742	7,420
11	254	2,794
12	83	996
13	19	247
14	4	56
15	0	0
16	1	16
17		
18		
19		
20		
21		
22		
23		
24		
25		
Total	43,097	203,363

Figure 4.1- ALL CAMPS Household Size

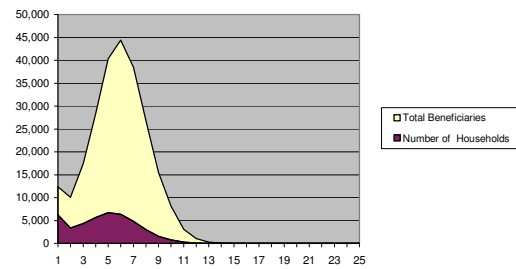


Table 4.2- Melkadida Camp Household Size

Family Size	Number of Households	Total Beneficiaries
1	946	946
2	640	1,280
3	907	2,721
4	1,154	4,616
5	1,378	6,890
6	1,358	8,148
7	1,084	7,588
8	641	5,128
9	389	3,501
10	204	2,040
11	71	781
12	30	360
13	10	130
14	1	14
15		
16		
17		
18		
19		
20		
21		
22		
23		
24		
25		
Total	8,813	44,143

Figure 4.2- Melkadida Camp Household Size

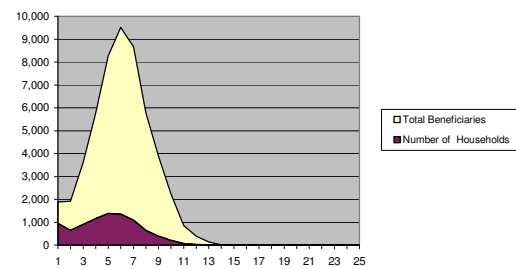


Table 4.3 - Bokolmanyo Camp Household Size		
Family Size	Number of Households	Total Beneficiaries
1	1,626	1,626
2	885	1,770
3	934	2,802
4	1,153	4,612
5	1,268	6,340
6	1,216	7,296
7	965	6,755
8	614	4,912
9	345	3,105
10	174	1,740
11	83	913
12	24	288
13	5	65
14	2	28
15		
16		
17		
18		
19		
20		
21		
22		
23		
24		
25		
Total	9,294	42,252

Figure 4.3- Bokolmanyo Camp Household Size

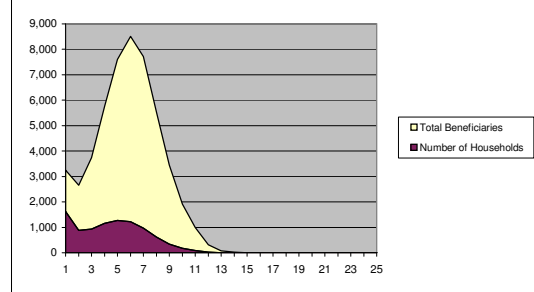


Table 4.4 - Kobe Camp Household Size		
Family Size	Number of Households	Total Beneficiaries
1	1,448	1,448
2	610	1,220
3	838	2,514
4	1,011	4,044
5	1,191	5,955
6	1,182	7,092
7	930	6,510
8	586	4,688
9	287	2,583
10	132	1,320
11	38	418
12	11	132
13		
14		
15		
16		
17		
18		
19		
20		
21		
22		
23		
24		
25		
Total	8,264	37,924

Figure 4.4- Kobe Camp Household Size

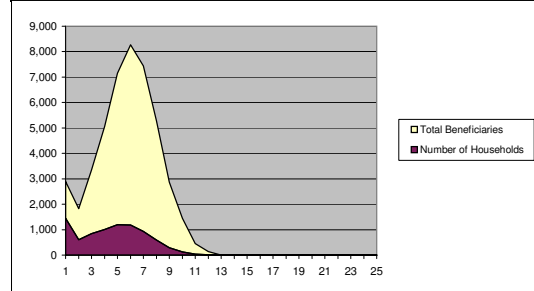


Table 4.5 - Hilaweyn Camp Household Size		
Family Size	Number of Households	Total Beneficiaries
1	1,078	1,078
2	627	1,254
3	770	2,310
4	1,107	4,428
5	1,331	6,655
6	1,281	7,686
7	937	6,559
8	595	4,760
9	293	2,637
10	124	1,240
11	34	374
12	7	84
13	1	13
14		
15		
16		
17		
18		
19		
20		
21		
22		
23		
24		
25		
Total	8,185	39,078

Figure 4.5- Hilaweyn Camp Household Size

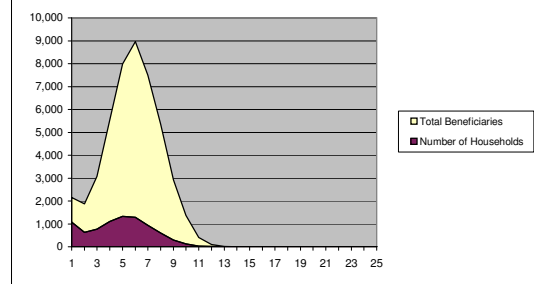
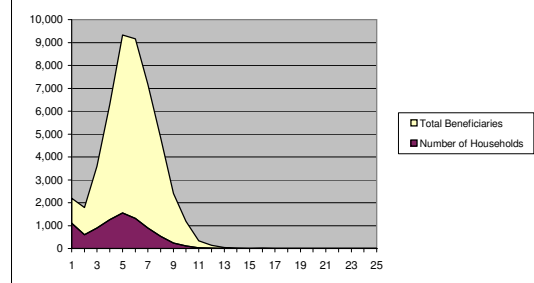


Table 4.6 - Buramino Camp Household Size		
Family Size	Number of Households	Total Beneficiaries
1	1,098	1,098
2	599	1,198
3	897	2,691
4	1,259	5,036
5	1,554	7,770
6	1,308	7,848
7	896	6,272
8	538	4,304
9	240	2,160
10	108	1,080
11	28	308
12	11	132
13	3	39
14	1	14
15	0	0
16	1	16
17		
18		
19		
20		
21		
22		
23		
24		
25		
Total	8,541	39,966

Figure 4.6- Buramino Camp Household Size



Specific Needs Among Camp Populations

As of 30 Jun 2014

Table 5.1- ALL CAMPS Specific Needs

Specific Need Type	Sex		Total
	Male	Female	
Child/adolescent at risk*	171	528	699
Woman at risk**		12,817	12,817
Serious medical Condition	1,100	1,645	2,745
Legal Protection needs	26	531	557
Single Parent	880	16,754	17,634
Persons with disabilities	1,602	1,693	3,295
Unaccompanied minor/Separated child	3,420	3,716	7,136
Older person at risk	1,266	1,927	3,193
Total ALL CAMPS	8,465	39,611	48,076

* Excludes data for Children at risk of not attending school - data pending verification

** Excludes data for lactating mothers

Figure 5.1 - ALL CAMPS Specific Needs

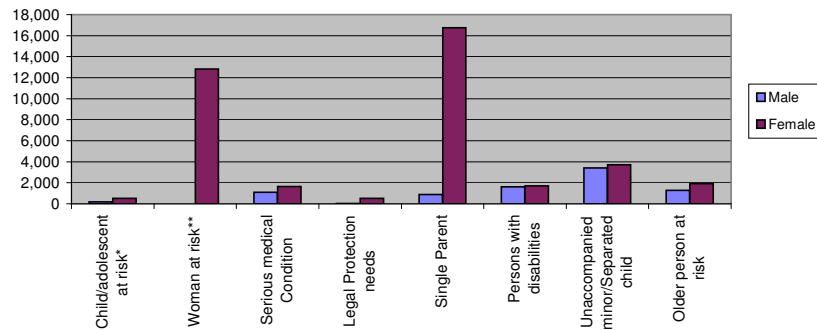


Table 5.2- Melkadida Camp Specific Needs

Specific Need Type	Sex		Total
	Male	Female	
Child/adolescent at risk*	69	174	243
Woman at risk**		4,367	4,367
Serious medical Condition	276	475	751
Legal Protection needs	9	347	356
Single Parent	216	4,208	4,424
Persons with disabilities	416	498	914
Unaccompanied minor/Separated child	1,005	1,097	2,102
Older person at risk	290	405	695
Melkadida Total	2,281	11,571	13,852

Figure 5.2 - Melkadida Camp Specific Needs

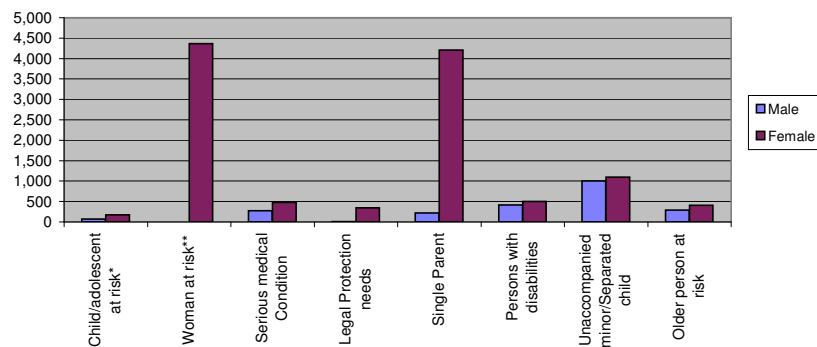


Table 5.3- Bokolmany Camp Specific Needs			
Specific Need Type	Sex		Total
	Male	Female	
Child/adolescent at risk*	52	137	189
Woman at risk**		4,149	4,149
Serious medical Condition	280	505	785
Legal Protection needs	14	129	143
Single Parent	201	3,731	3,932
Persons with disabilities	583	510	1,093
Unaccompanied minor/Separated child	984	1,061	2,045
Older person at risk	303	414	717
Bokomanyol Total	2,417	10,636	13,053

Figure 5.3 - Bokolmany Camp Specific Needs

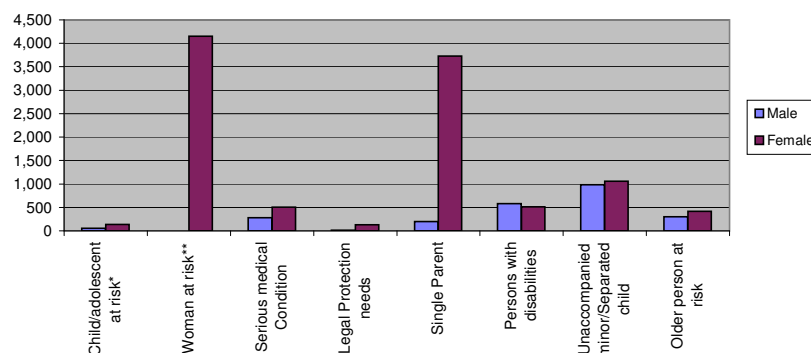


Table 5.4- Kobe Camp Specific Needs			
Specific Need Type	Sex		Total
	Male	Female	
Child/adolescent at risk*	29	100	129
Woman at risk**		1,741	1,741
Serious medical Condition	263	297	560
Legal Protection needs	1	35	36
Single Parent	155	2,364	2,519
Persons with disabilities	216	249	465
Unaccompanied minor/Separated child	650	672	1,322
Older person at risk	247	437	684
Kobe Total	1,561	5,895	7,456

Figure 5.5 - Kobe Camp Specific Needs

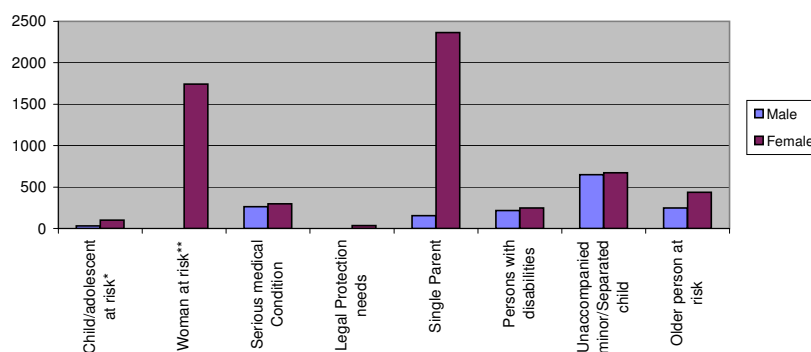


Table 5.6- Hilaweyn Camp Specific Needs			
Specific Need Type	Sex		Total
	Male	Female	
Child/adolescent at risk*	17	39	56
Woman at risk**		2,070	2,070
Serious medical Condition	164	197	361
Legal Protection needs	1	18	19
Single Parent	169	3,138	3,307
Persons with disabilities	235	298	533
Unaccompanied minor/Separated child	587	695	1,282
Older person at risk	235	348	583
Hilaweyn Total	1,408	6,803	8,211

Figure 5.6 - Hilaweyn Camp Population Increase

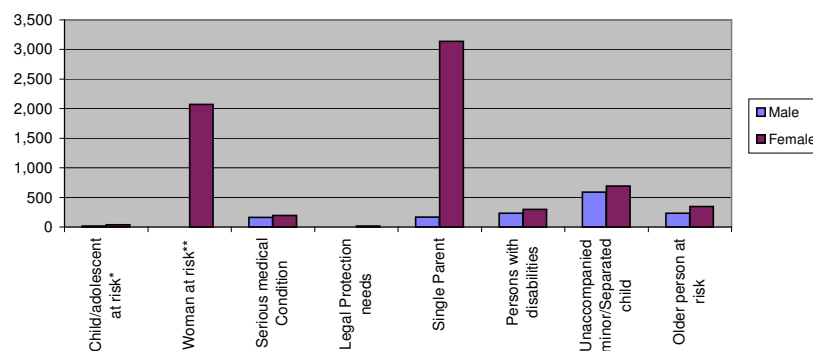
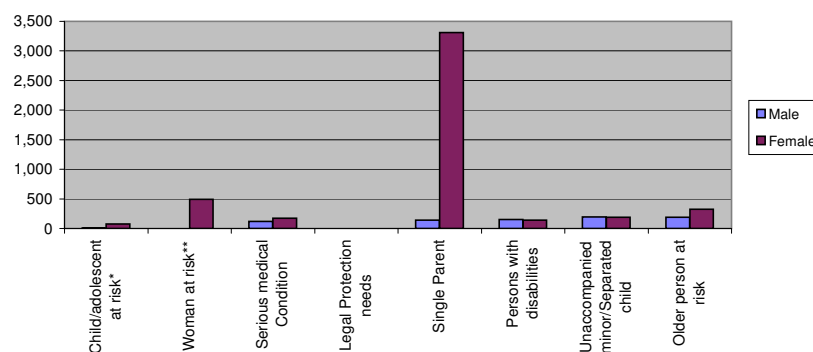


Table 5.7- Buramino Camp Specific Needs			
Specific Need Type	Sex		Total
	Male	Female	
Child/adolescent at risk*	4	78	82
Woman at risk**		490	490
Serious medical Condition	117	171	288
Legal Protection needs	1	2	3
Single Parent	139	3,313	3,452
Persons with disabilities	152	138	290
Unaccompanied minor/Separated child	194	191	385
Older person at risk	191	323	514
Buramino Total	798	4,706	5,504

Figure 5.7 - Buramino Camp Population Increase



Places of Origin

As of 30 Jun 2014

Table 7.1- ALL CAMPS Places of Origin

Area of Origin	Sex		Total
	Male	Female	
Gedo	48,339	59,320	107,659
Badadir	2,863	3,422	6,285
Bay	28,666	28,509	57,175
Bakol	10,895	12,680	23,575
Lower Shabelle	404	452	856
Lower Juba	287	307	594
Galgadud	86	80	166
Middle Shabelle	79	76	155
Hiran	385	415	800
Other	2,883	3,215	6,098
ALL CAMPS Total	94,887	108,476	203,363

Figure 7.1 - ALL CAMPS Places of Origin

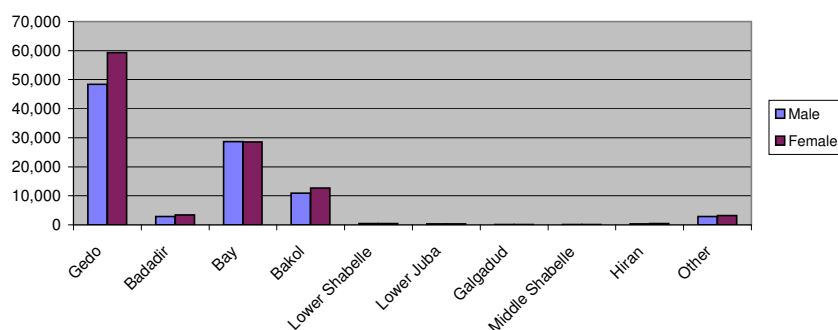


Table 7.2- Melkadida Camp Places of Origin

Area of Origin	Sex		Total
	Male	Female	
Gedo	12,970	15,794	28,764
Badadir	661	825	1,486
Bay	4,377	4,280	8,657
Bakol	1,590	1,915	3,505
Lower Shabelle	88	98	186
Lower Juba	56	53	109
Galgadud	18	21	39
Middle Shabelle	23	20	43
Hiran	86	84	170
Other	556	628	1,184
Melkadida Total	20,425	23,718	44,143

Figure 7.2 - Melkadida Camp Places of Origin

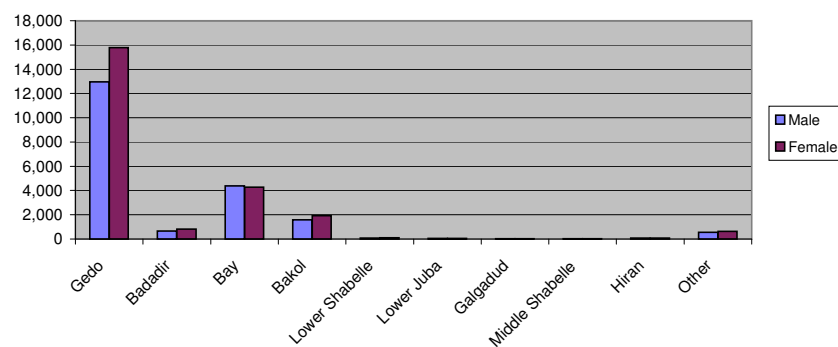


Table 7.3- Bokolmany Camp Places of Origin			
Area of Origin	Sex		Total
	Male	Female	
Gedo	10,827	13,140	23,967
Badadir	1,524	1,733	3,257
Bay	4,947	4,803	9,750
Bakol	1,382	1,464	2,846
Lower Shabelle	106	118	224
Lower Juba	138	128	266
Galgadud	37	27	64
Middle Shabelle	20	17	37
Hiran	88	98	186
Other	806	849	1,655
Bokomanyol Total	19,875	22,377	42,252

Figure 7.3 - Bokolmany Camp Places of Origin

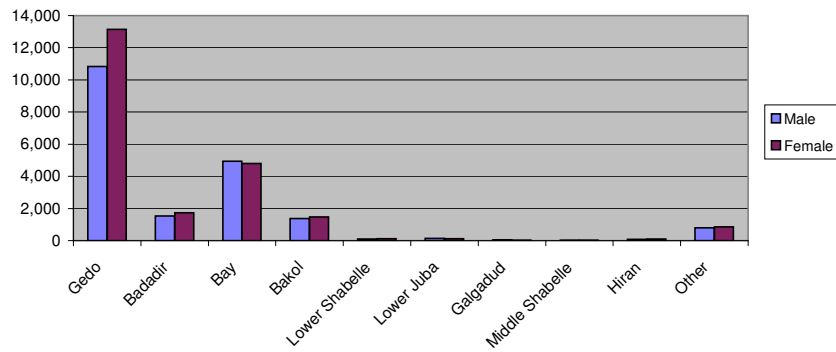


Table 7.4- Kobe Camp Places of Origin			
Area of Origin	Sex		Total
	Male	Female	
Gedo	5,161	6,328	11,489
Badadir	75	90	165
Bay	9,787	9,918	19,705
Bakol	2,395	2,707	5,102
Lower Shabelle	27	16	43
Lower Juba	26	42	68
Galgadud	7	2	9
Middle Shabelle	14	19	33
Hiran	23	29	52
Other	611	647	1,258
Kobe Total	18,126	19,798	37,924

Figure 7.5 - Kobe Camp Places of Origin

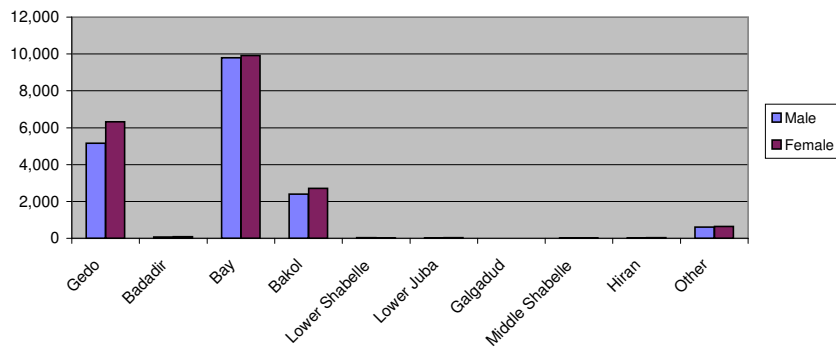


Table 7.6- Hilaweyn Camp Places of Origin			
Area of Origin	Sex		Total
	Male	Female	
Gedo	8,412	10,604	19,016
Badadir	204	278	482
Bay	5,790	5,786	11,576
Bakol	3,115	3,426	6,541
Lower Shabelle	46	34	80
Lower Juba	16	27	43
Galgadud	7	19	26
Middle Shabelle	1		1
Hiran	45	59	104
Other	558	651	1,209
Hilaweyn Total	18,194	20,884	39,078

Figure 7.6 - Hilaweyn Camp Places of Origin

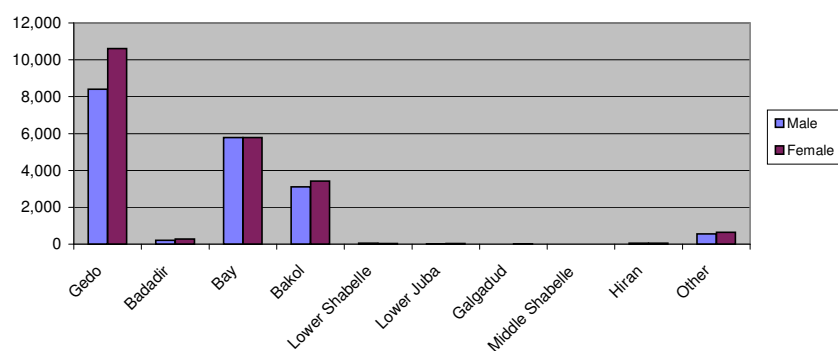
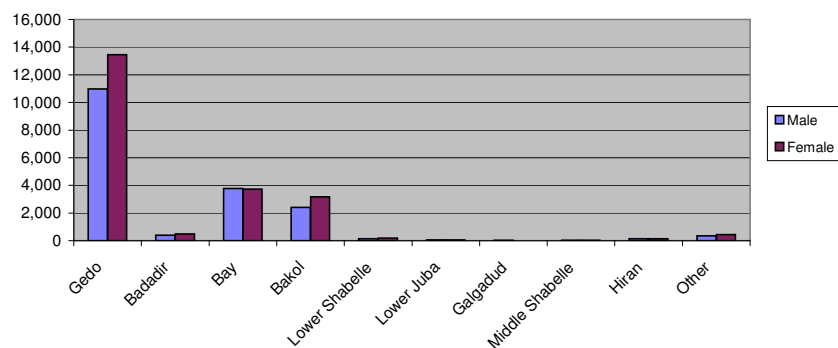


Table 7.7- Buramino Camp Places of Origin			
Area of Origin	Sex		Total
	Male	Female	
Gedo	10,969	13,454	24,423
Badadir	399	496	895
Bay	3,765	3,722	7,487
Bakol	2,413	3,168	5,581
Lower Shabelle	137	186	323
Lower Juba	51	57	108
Galgadud	17	11	28
Middle Shabelle	21	20	41
Hiran	143	145	288
Other	352	440	792
Buramino Total	18,267	21,699	39,966

Figure 7.7 - Buramino Camp Places of Origin



Ethnic Breakdown

As of 30 Jun 2014

Table 6.1- ALL CAMPS Ethnic Breakdown

Ethnicity	Sex		Total
	Male	Female	
Rahan-weyn	56,028	60,827	116,855
Marehan	19,342	24,421	43,763
Hawiye	8,191	9,858	18,049
Dir	2,557	3,112	5,669
Bantu	923	1,131	2,054
Ashraf	1,281	1,347	2,628
Shekal	1,196	1,432	2,628
Darod	1,452	1,623	3,075
Minorities/Others	3,917	4,725	8,642
ALL CAMPS Total	94,887	108,476	203,363

Figure 6.1 - ALL CAMPS Ethnic Breakdown

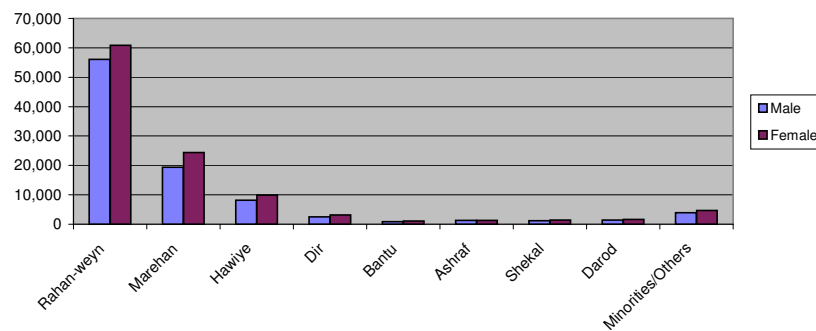


Table 6.2- Melkadida Camp Ethnic Breakdown

Ethnicity	Sex		Total
	Male	Female	
Rahan-weyn	11,973	12,973	24,946
Marehan	5,411	7,081	12,492
Hawiye	733	877	1,610
Dir	509	657	1,166
Bantu	290	325	615
Ashraf	315	317	632
Shekal	87	127	214
Darod	160	198	358
Minorities/Others	947	1,163	2,110
Melkadida Total	20,425	23,718	44,143

Figure 6.2 - Melkadida Camp Ethnic Breakdown

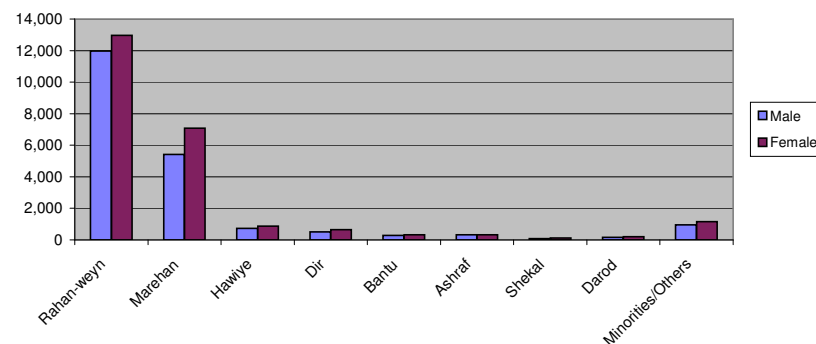


Table 6.3- Bokolmany Camp Ethnic Breakdown			
Ethnicity	Sex		Total
	Male	Female	
Rahan-weyn	10,166	11,083	21,249
Marehan	4,491	5,347	9,838
Hawiye	1,456	1,762	3,218
Dir	479	557	1,036
Bantu	258	326	584
Ashraf	456	479	935
Shekal	345	382	727
Darod	496	479	975
Minorities/Others	1,728	1,962	3,690
Bokomanyol Total	19,875	22,377	42,252

Figure 6.3 - Bokolmany Camp Ethnic Breakdown

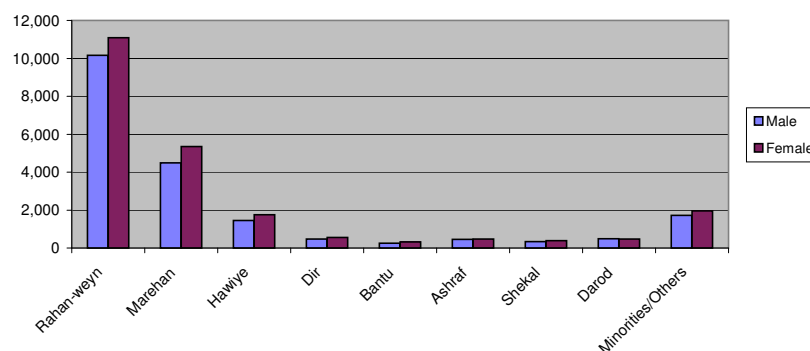


Table 6.4- Kobe Camp Ethnic Breakdown			
Ethnicity	Sex		Total
	Male	Female	
Rahan-weyn	13,987	14,688	28,675
Marehan	2,105	2,604	4,709
Hawiye	826	1,012	1,838
Dir	142	188	330
Bantu	79	96	175
Ashraf	63	83	146
Shekal	152	214	366
Darod	429	504	933
Minorities/Others	343	409	752
Kobe Total	18,126	19,798	37,924

Figure 6.5 - Kobe Camp Ethnic Breakdown

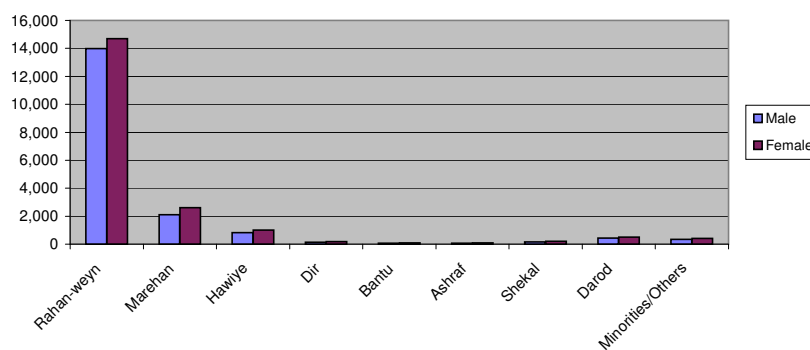


Table 6.6- Hilaweyn Camp Ethnic Breakdown			
Ethnicity	Sex		Total
	Male	Female	
Rahan-weyn	11,354	12,189	23,543
Marehan	3,746	4,769	8,515
Hawiye	1,645	2,140	3,785
Dir	445	527	972
Bantu	113	156	269
Ashraf	164	187	351
Shekal	191	236	427
Darod	202	222	424
Minorities/Others	334	458	792
Hilaweyn Total	18,194	20,884	39,078

Figure 6.6 - Hilaweyn Camp Ethnic Breakdown

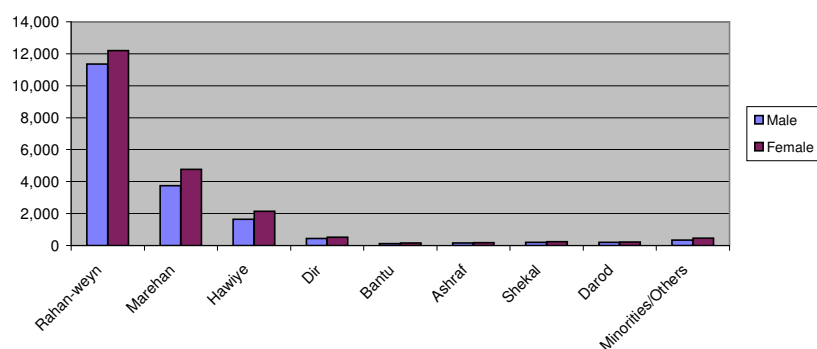


Table 6.7- Buramino Camp Ethnic Breakdown			
Ethnicity	Sex		Total
	Male	Female	
Rahan-weyn	8,548	9,894	18,442
Marehan	3,589	4,620	8,209
Hawiye	3,531	4,067	7,598
Dir	982	1,183	2,165
Bantu	183	228	411
Ashraf	283	281	564
Shekal	421	473	894
Darod	165	220	385
Minorities/Others	565	733	1,298
Buramino Total	18,267	21,699	39,966

Figure 6.7 - Buramino Camp Ethnic Breakdown

