



United Nations Country Team in Turkey
Daily Situation Report on the Situation Pertaining to Syria

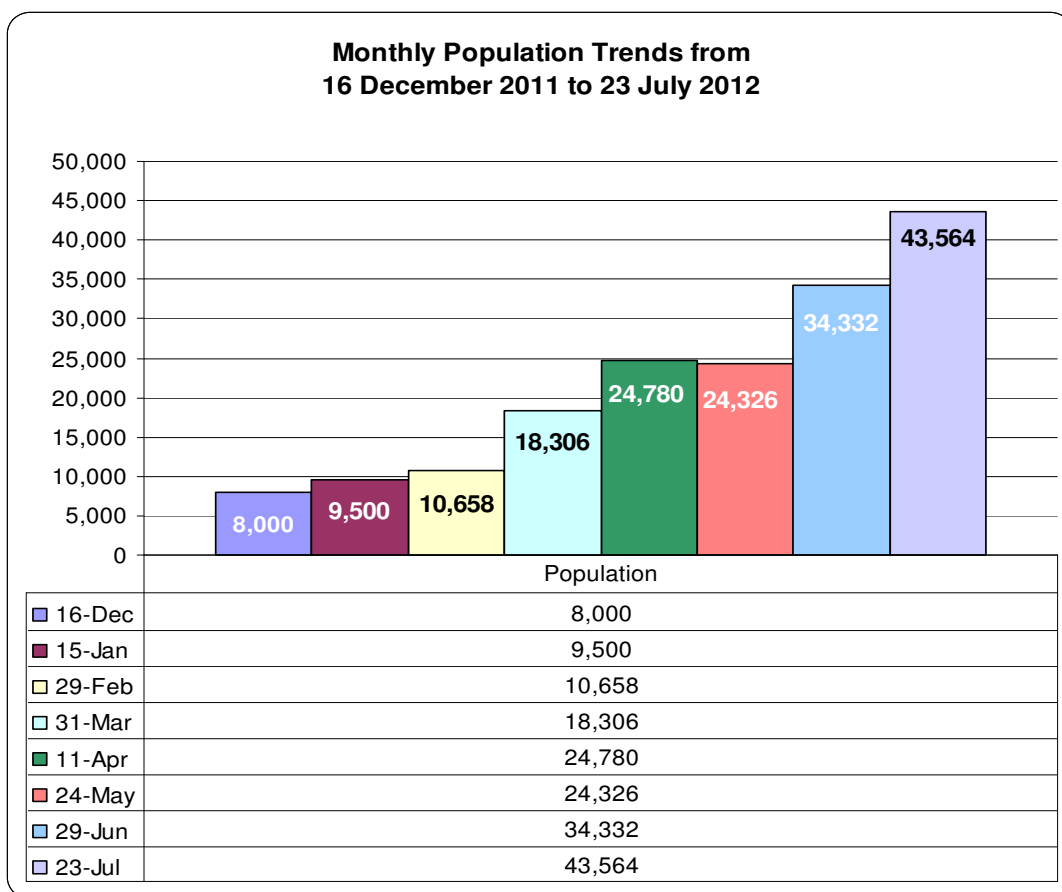
July 25, 2012

Officially as of July 23, 2012 the total camp population is **43,564** with the arrival of 338 and return of 146 persons on July 22-23, 2012. No new numbers are reported by Government on July 25, 2012.

1. Highlights:

- ❖ From May 24 to July 25, 2012 there has been an increase of 79% in total number of Syrians currently provided temporary protection by Turkish Government.
- ❖ Deputy Prime Minister informed the media that due to the on going situation in Syria, in order to be able to respond the possibility of more new arrivals, the Government of Turkey had identified new sites to establish new camps. Apart from the cities announced before (Gaziantep/Nizip, Kahramanmaraş/Türkoğlu) the Minister also mentioned the name of Osmaniye city.
- ❖ It was reported in several national TV channels and newspapers that Turkish Government closed all the border gates with Syria. Reportedly the closure was for the commercial traffic to/from Syria/Turkey. Regional Representative of the Ministry of Foreign Affairs (MFA) in Kilis confirmed that there is no restriction at the borders on anyone seeking temporary protection. It is just ban on exit and entry for commercial traffic and also for security reasons to ban Turkish citizens who want to cross to Syria.
- ❖ Camp management and MFA representative in Islahiye informed that the refugees in the camp had established a commission and visited the management on behalf of the community and apologized for the incident on Sunday July 22, 2012. Reportedly the media was invited during the statement by the refugees for apology.
- ❖ The camp management in Islahiye informed that after the incident on July 22, 2012, 400 Turcoman origin Syrians who were relocated to the boarding school (YIBO) in Islahiye will remain there until further solution and additionally 300 new arrivals were received but no new arrivals will be admitted in Islahiye camp.

Total number of registered persons from December 16, 2011 to July 23, 2012 is reflected below.



Currently arrivals from Syria are assisted in the border provinces of Hatay, Gaziantep, Kilis and Şanlıurfa.

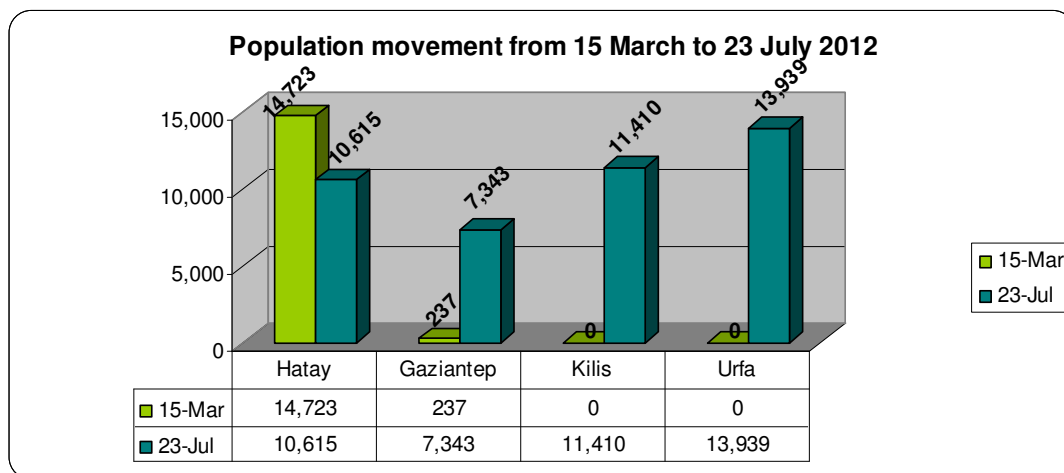
As of July 23, 2012 the city breakdown in the region is as follows:

- Hatay population* : 10,615 individuals
- Gaziantep population in İslahiye†: 7,343 individuals
- Kilis population in Öncüpınar container site: 11,410 individuals
- Şanlıurfa population in Ceylanpınar: 13,939 individuals
- In Hospitals: 257 individuals (223 patients+34 companions)

Population movement from Hatay to Gaziantep (İslahiye Camp), Kilis (Öncüpınar Container site) and Şanlıurfa (Ceylanpınar), from March 15[†] to July 23, 2012 is reflected below.

*: The population of the Kuyubaşı/Karbeyaz, Yayladağı 2 (YİBO) and Reyhanlı camps in Hatay is moved to İslahiye camp in Gaziantep and to Öncüpınar container site in Kilis. It has been reported that these empty camps will be kept for while as standby and there is some use of these camps for new arrivals.

† 15 March is the date of first movement took place from Hatay.



Please find below the map of the region including current eight camps in Hatay, Kilis, Gaziantep and Şanlıurfa as of July 23, 2012.



*** The number mentioned as Hatay is the cumulative population of five camps in Altinözü (Tekel), Altinözü (Boynuyoğun), Yayladağı (Tekel, Yayladağı (YIBO-reopened as of July 12, 2012) and Hatay Apaydin