



**United Nations Country Team in Turkey
Daily Situation Report on the Situation Pertaining to Syria**

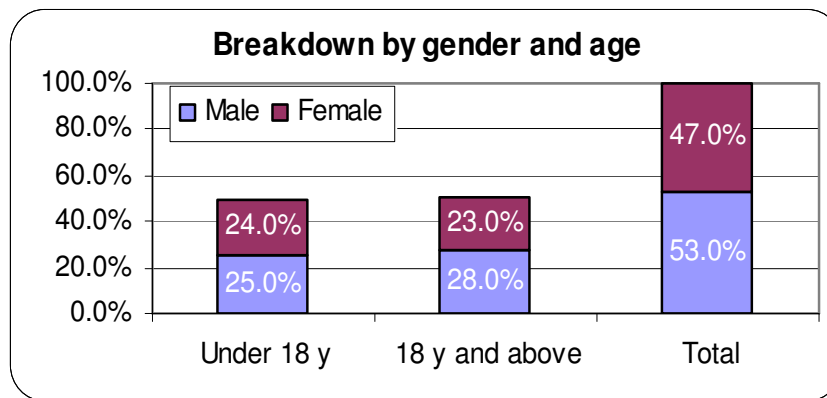
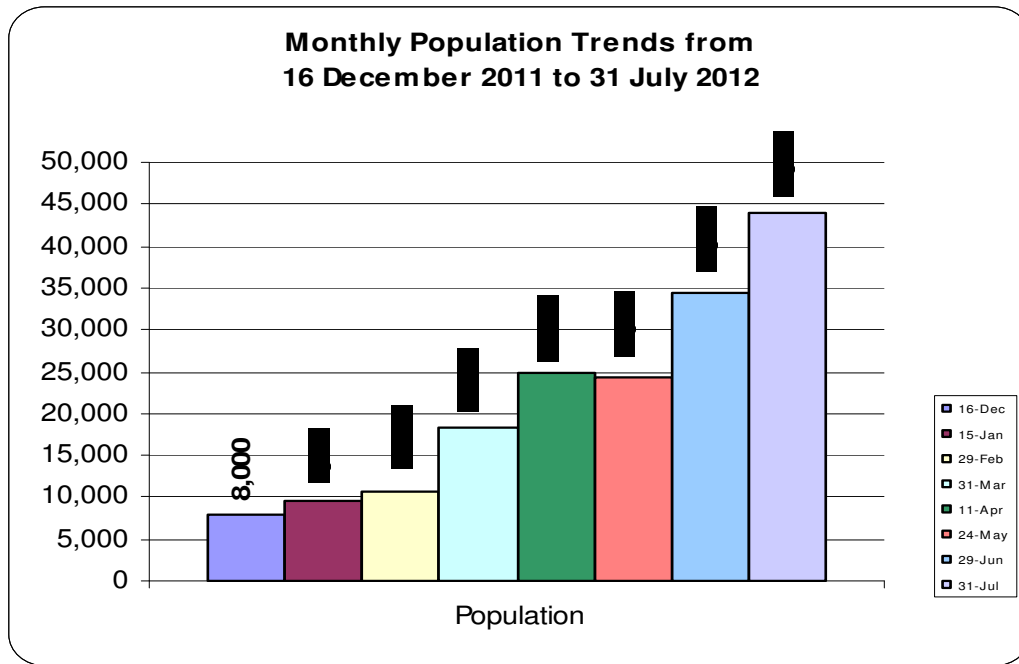
August 3, 2012

There is no new numbers announced by the Turkish Government. As of August 02, 2012, the official total camp population is **44,038** with the arrival of 525 persons and returnees of 532 on July 30-31, 2012.

1. Highlights:

- ❖ From May 24 to August 01, 2012 there has been an increase of 81% in the total number of Syrians currently receiving temporary protection from the Turkish Government.
- ❖ Regional Representative of the Ministry of Foreign Affairs reported that the trend of new arrivals increased and during the last 24 hrs and the number of new arrivals recorded was approximately 2,000 persons.
- ❖ Reportedly about 1,400 of the new arrivals crossed the border from Reyhanlı therefore presumably they are coming from Aleppo and its surrounding villages while about 600 of them were from Latakia.
- ❖ As all the new arrivals are referred to the camp in Ceylanpınar, it was reported by authorities in the field that while the Turkish Red Crescent has been working very hard to erect more tents, about 300 of the new arrivals were accommodated temporarily in the available spaces (tents used school).
- ❖ Reportedly it is planned to open the camp in Akçakale/Şanlıurfa in the coming days to accommodate new arrivals.
- ❖ It was reported in national media that Turkey is working to increase the capacity of its camps to shelter Syrian refugees to a total of 100,000 in the following weeks. Five new shelter camps with a total capacity of 50,000 people are being built in cities in southern and south eastern Turkey.

Total number of registered persons from December 16, 2011 to July 31 2012 is reflected below.



Currently arrivals from Syria are assisted in the border provinces of Hatay, Gaziantep, Kilis and Şanlıurfa.

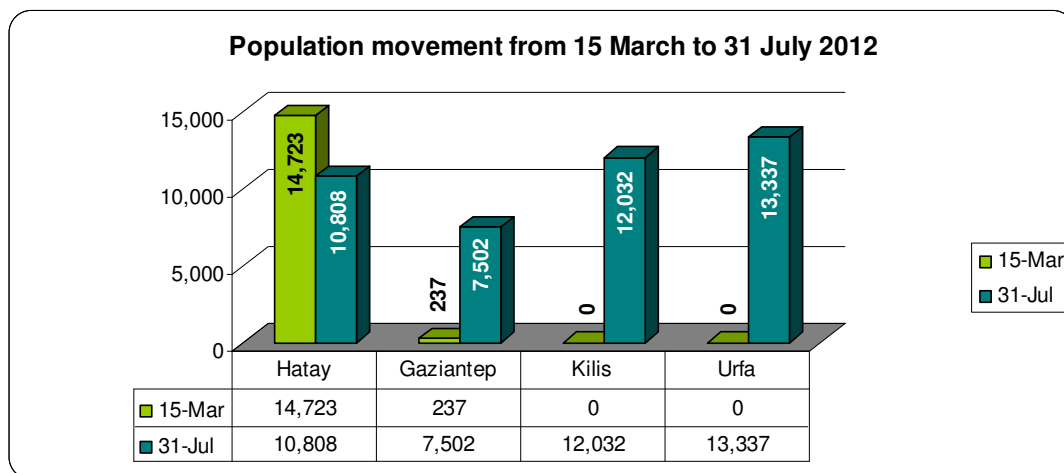
As of July 31, 2012 the city breakdown in the region is as follows:

- Hatay population* : 10,808 individuals
- Gaziantep population in İslahiye[†] : 7,502 individuals
- Kilis population in Öncüpınar container site: 12,032 individuals
- Şanlıurfa population in Ceylanpınar: 13,337 individuals
- In Hospitals: 359 individuals (320 in hospitals + 39 companions)

Population movement from Hatay to Gaziantep (İslahiye Camp), Kilis (Öncüpınar Container site) and Şanlıurfa (Ceylanpınar), from March 15[†] to July 31, 2012 is reflected below.

*: The population of the Kuyubaşı/Karbeyaz, Yayladağı 2 (YİBO) and Reyhanlı camps in Hatay is moved to İslahiye camp in Gaziantep and to Öncüpınar container site in Kilis. It has been reported that these empty camps will be kept for while as standby and there is some use of these camps for new arrivals.

[†] 15 March is the date of first movement took place from Hatay.



Please find below the map of the region including current eight camps in Hatay, Kilis, Gaziantep and Şanlıurfa as of July 31, 2012.



***** The number mentioned as Hatay is the cumulative population of five camps in Altınöz (Tekel), Altınöz (Boynuyoğun), Yayladağı (Tekel, Yayladağı (YIBO-reopened as of July 12, 2012) and Hatay Apaydın**