

# AL ZAATARI REFUGEE CAMP MAFRAQ GOVERNORATE, JORDAN

Analysis with WorldView-1 Data Acquired 15 November 2012 and WorldView-2 Data Acquired 3 September 2012

This map illustrates satellite-detected shelters and other buildings at the Al Zaatari refugee camp in Mafraq Governorate, Jordan. As of 15 November 2012 a total of 5,163 shelters were detected as well as 499 infrastructure and support buildings within the 216 hectares of the camp. The number of shelters has thus increased by about 2,400 since the previous UNITAR/UNOSAT assessment of the camp which used a satellite image from 3 September 2012,

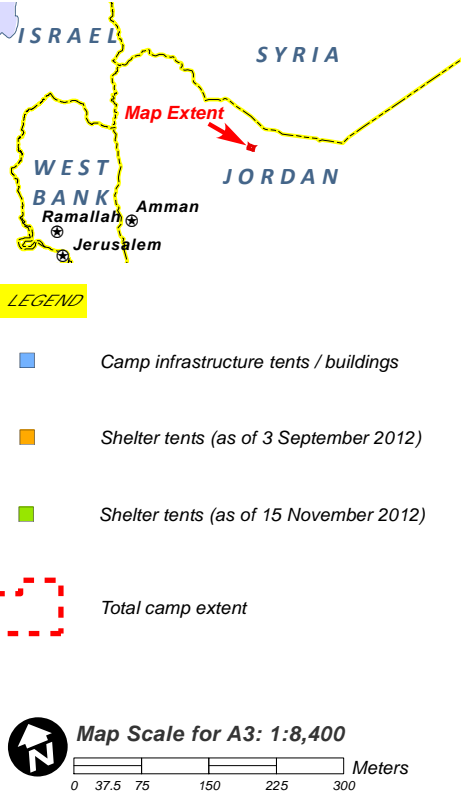
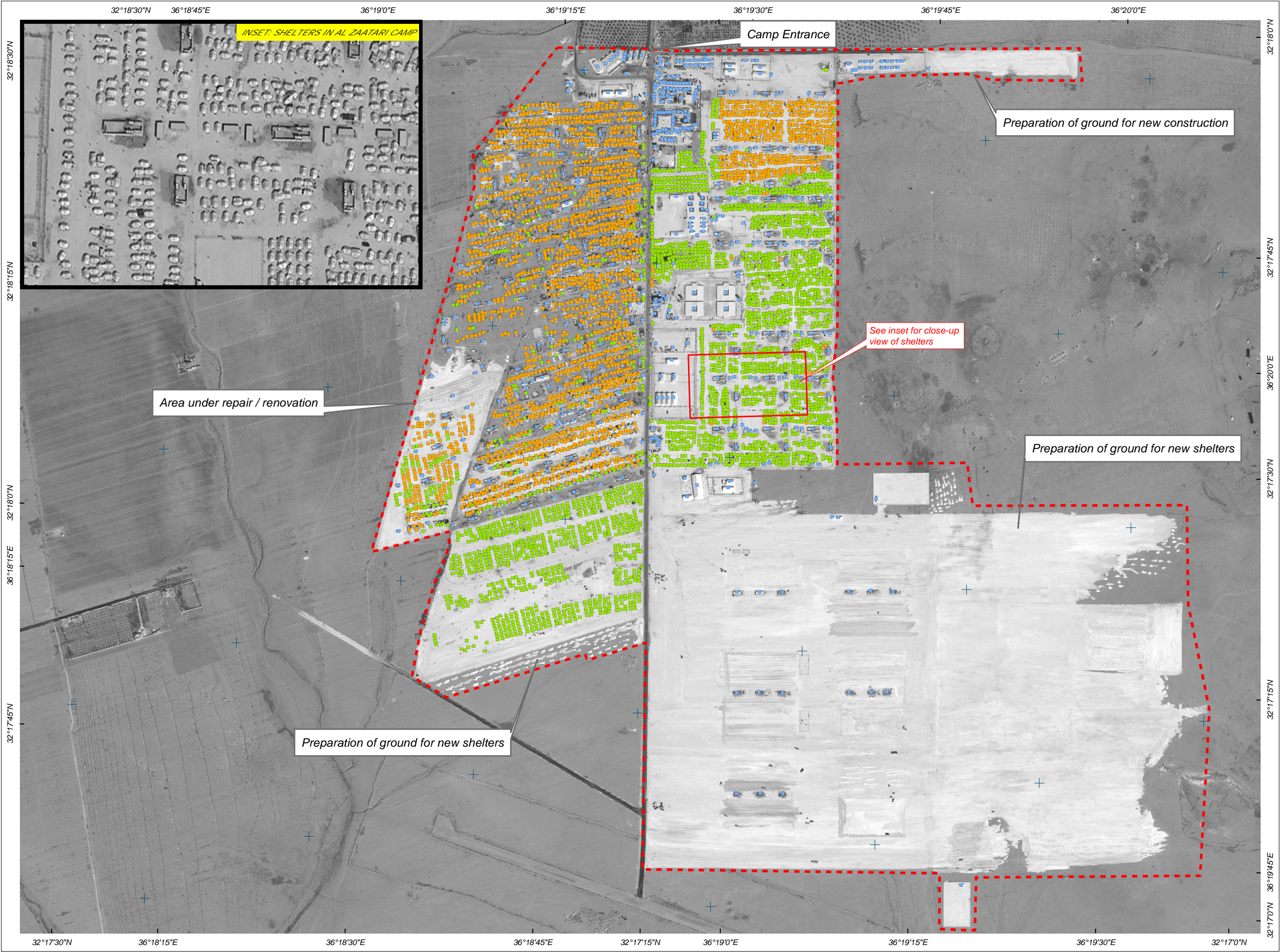
indicating the number of camp inhabitants have likely doubled since that date. In addition, numerous areas of expansion are also visible in the image as of 15 November 2012, indicating preparations are underway to accommodate similarly increased numbers of refugees in the near future. This is a preliminary analysis and has not yet been validated in the field. Please send ground feedback to UNITAR/UNOSAT.

Refugee Camp

Production Date:  
23/11/2012

Version 1.0

Activation Number:  
CE20110704SYR



Satellite Data (1): WorldView-1  
Imagery Dates: 15 November 2012  
Resolution: 50 cm  
Copyright: DigitalGlobe 2012  
Source: European Space Imaging  
Satellite Data (2): WorldView-2  
Imagery Dates: 3 September 2012  
Resolution: 50 cm  
Copyright: DigitalGlobe 2012  
Source: European Space Imaging  
Road Data : Google Map Maker / OSM / ESRI  
Other Data: USGS, UNCS, NASA, NGA  
Analysis : UNITAR / UNOSAT  
Production: UNITAR / UNOSAT  
Analysis conducted with ArcGIS v10

Coordinate System: WGS 1984 UTM Zone 37N  
Projection: Transverse Mercator  
Datum: WGS 1984  
Units: Meter

The depiction and use of boundaries, geographic names and related data shown here are not warranted to be error-free nor do they imply official endorsement or acceptance by the United Nations. UNOSAT is a program of the United Nations Institute for Training and Research (UNITAR), providing satellite imagery and related geographic information, research and analysis to UN humanitarian and development agencies and their implementing partners.

This work by UNITAR/UNOSAT is licensed under a Creative Commons Attribution-NonCommercial-ShareAlike 3.0 Unported License.



Contact Information: [unosat@unitar.org](mailto:unosat@unitar.org)  
24/7 Hotline: +41 76 487 4998  
[www.unitar.org/unosat](http://www.unitar.org/unosat)