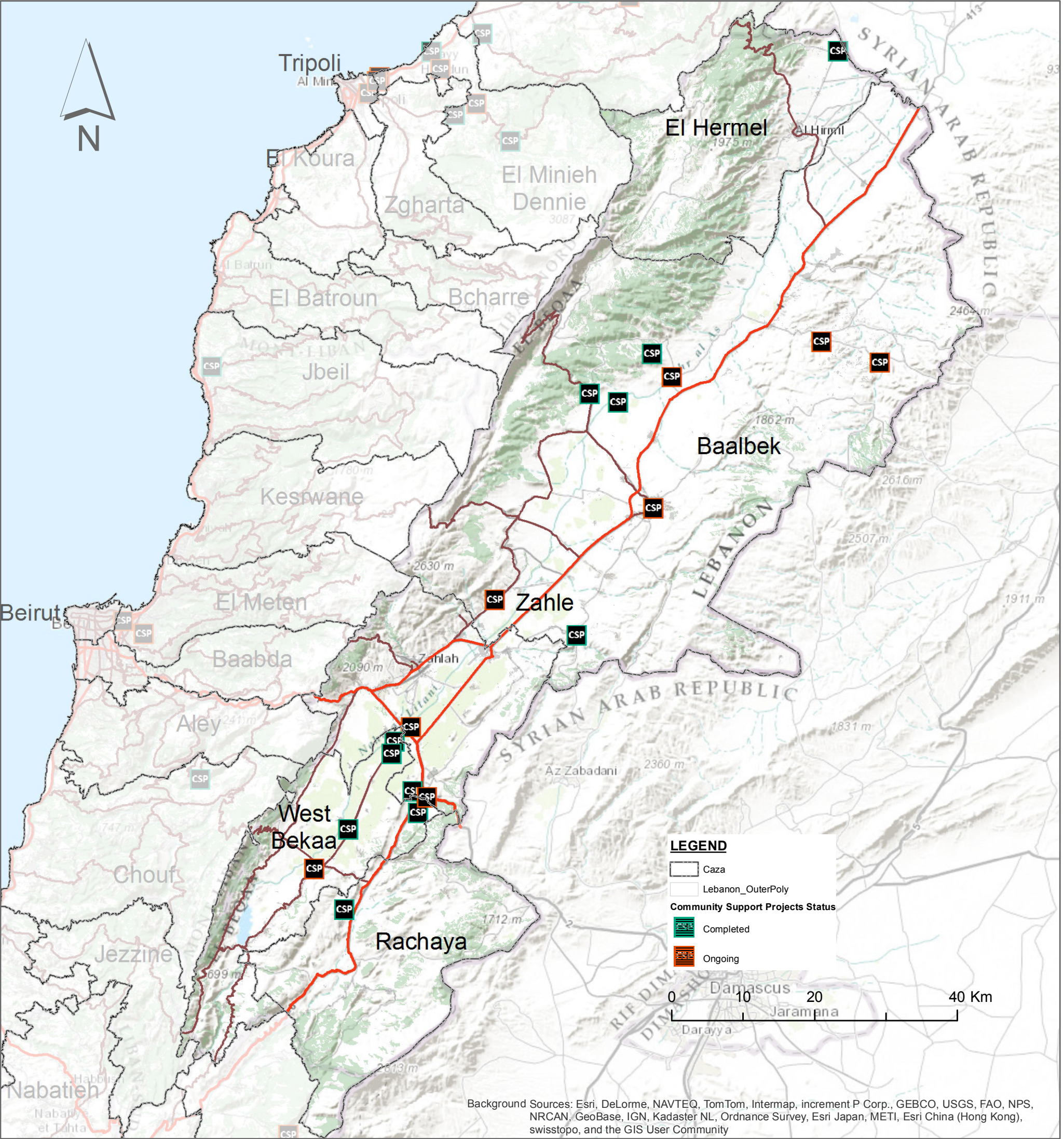


# SYRIA REFUGEE RESPONSE LEBANON.

Bekaa Mohafaza (Governorate).  
Community Support Projects (CSP) in Refugee  
Hosting Communities. July, 2013



This information is based on the updates  
"UNHCR Lebanon Community Support Projects in Refugees  
Hosting Communities" June 2013.  
UNHCR: Degefu Mesfin, [degefum@unhcr.org](mailto:degefum@unhcr.org).

GIS and Mapping by UNHCR. For more information and updates.  
Contact: Rodolphe Ghossoub, [ghossoub@unhcr.org](mailto:ghossoub@unhcr.org).

The boundaries, names, and designations used on this map do not imply  
official endorsement of the United Nations or UNHCR. All data used were  
the best available at the time of map production.

Community Support Projects by UNHCR as of 30th June 2013;  
Caza Boundaries, Roads, Natural/Urban Areas by NPMLT 2005.

CSP: Community Support Projects  
NPMLT: National Physical Master Plan for the Lebanese Territory